



# Store More

The Eppendorf ULT Freezer Racking System



# Burdened by Unsorted Boxes Cluttering Your Freezer?

Make your scientific life easier: store your freezer storage boxes within organized freezer racks. These metal racks optimize your freezer space and make it easy to find the items you desire. Don't waste time sifting through unsorted samples.

## Drawer or side access

There are two rack styles available to make your freezer usage the most efficient. When using racks with drawers, only the relevant drawer with the freezer boxes of interest is pulled-out. All other boxes safely stay in the cold interior of the ULT freezer. Eppendorf drawers are engineered to deliver smooth movement at -80 °C for ergonomic handling.

When using side access racks, accessing samples means removing most of the storage boxes from the cold interior of the ULT freezer. The side access rack must be completely removed for sample access. Racks for chest freezers can be equipped with locking rods to secure freezer boxes when pulling-out the rack tower.

## Stainless steel or aluminum

By standard, there are two types of rack materials available:

Stainless steel (see pages 8 – 13):

- > Stable and robust for longevity and higher capacity
- > For freezer boxes up to 136 mm x 136 mm footprint for high flexibility
- > Optimized cooling conditions by special design for improved sample safety

Aluminum (see page 7):

- > For freezer boxes up to 133 mm x 133 mm footprint
- > Non-corrosive anodized aluminum for long-term use

## Sample storage rack selection

Though you often only hear about the safety of your samples, the method of sample storage and organization can be just as important. To select the right set of racks for optimal usage of your freezer, we advise you to consider a few questions:

1. What type of freezer do you need to equip?
2. Do you prefer stainless steel or aluminum racks?
3. Do you need drawer or side access?
4. What type of tubes do you use?
5. How can I organize my freezer in an easy and logical way?



# In Need of Housekeeping?



The Eppendorf Storage Boxes are a complete system solution for sample storage.

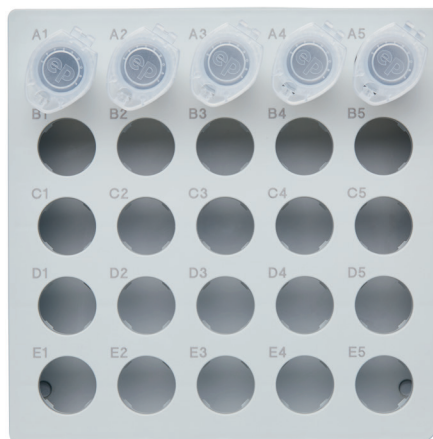
The comprehensive modular concept allows you to select the optimal box combinations for individual storage demands. The outer footprint dimensions (133 mm) are compatible with common freezer rack systems and the different inner grid variants provide for a perfect fit to all typical tube formats: cryogenic tubes, microcentrifuge tubes, conical tubes 15 and 50 mL, and other laboratory vessels. This space-saving approach, together with the application benefits resulting from the listed product features, helps to optimize your storage and archiving of samples.

## Flexible and stable

- > Made of polypropylene (PP) for high stability in freezing applications and a smooth opening and closing
- > Autoclavable (121 °C, 20 min) for sterilization
- > Transparent lid for easy and fast sample inspection
- > Optimal use of freezer space through flexible combination of the different formats

## Reliable

- > Laser-labeled, high-contrast, permanent alphanumeric markings of each location for easy sample reference and minimized risk of sample mix-up
- > 5 additional inscription labels on the lid enable user-specific labeling



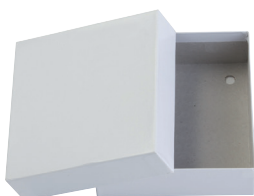
## Innovative and safe

- > 15 mL and 50 mL conical tube boxes with ventilation slots for an evenly distributed freezing process
- > Prevent tube damage or breakage, which is frequently observed when freezing long tube formats in closed boxes

# Eppendorf Storage Boxes

## Ordering information

Description	Order no.
<b>Storage Box 10 × 10</b> , for 100 cryogenic tubes w. int. thread, 3 pcs., height 52.8 mm, 2 inch, polypropylene, for freezing to -86 °C, autoclavable, with lid and alphanumeric code	0030 140.508
<b>Storage Box 9 × 9</b> , for 81 screw cap (cryog.) tubes 1-2 mL, 3 pcs., height 52.8 mm, 2 inch, polypropylene, for freezing to -86 °C, autoclavable, with lid and alphanumeric code	0030 140.516
<b>Storage Box 9 × 9</b> , for 81 screw cap (cryog.) tubes 3 mL, 2 pcs., height 76.2 mm, 3 inch, polypropylene, for freezing to -86 °C, autoclavable, with lid and alphanumeric code	0030 140.540
<b>Storage Box 9 × 9</b> , for 81 screw cap (cryog.) tubes 4-5 mL, 2 pcs., height 101.6 mm, 4 inch, polypropylene, for freezing to -86 °C, autoclavable, with lid and alphanumeric code	0030 140.567
<b>Storage Box 8 × 8</b> , for 64 tubes 1-2 mL, 3 pcs., height 52.8 mm, 2 inch, polypropylene, for freezing to -86 °C, autoclavable, with lid and alphanumeric code	0030 140.524
<b>Storage Box 5 × 5</b> , for 25 tubes 5 mL, 4 pcs., height 63.5 mm, 2.5 inch, polypropylene, for freezing to -86 °C, autoclavable, with lid and alphanumeric code	0030 140.532
<b>Storage Box 5 × 5</b> , for 25 tubes 5 mL screw cap, 2 pcs., height 76.2 mm, 3 inch, polypropylene, for freezing to -86 °C, autoclavable, with lid and alphanumeric code	0030 140.613
<b>Storage Box 5 × 5</b> , for 25 tubes 15 mL, 2 pcs., height 127 mm, 5 inch, polypropylene, for freezing to -86 °C, autoclavable, with lid and alphanumeric code	0030 140.583
<b>Storage Box 3 × 3</b> , for 9 tubes 50 mL and 4 tubes 15 mL, 2 pcs., height 127 mm, 5 inch, polypropylene, for freezing to -86 °C, autoclavable, with lid and alphanumeric code	0030 140.591

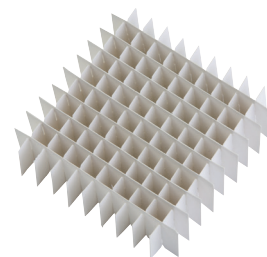


## Freezer Cardboard Storage Boxes

- > White cardboard box with water resistant coating, designed to withstand ultra-low temperatures
- > Available in 51 mm (2 in), 76 mm (3 in), and 102 mm (4 in) tall boxes
- > Compatible with box dividers 7 × 7 to 10 × 10 (dividers sold separately)
- > Box size footprint: 133 mm

## Freezer Boxes Dividers

- > Available in 7 × 7, 8 × 8, 9 × 9 and 10 × 10 configurations
- > Compatible with freezer cardboard storage boxes (boxes sold separately)



## Ordering information

Description	Order no.
<b>Freezer Cardboard Storage Boxes, white</b>	
51 mm, 2 in, tall	B50-SQ
76 mm, 3 in, tall	B75-SQ
102 mm, 4 in, tall	B95-SQ
<b>Freezer Boxes Dividers</b>	
7 × 7, 17.4 mm max. tube diameter, holds 49 tubes	D49
8 × 8, 15 mm max. tube diameter, holds 64 tubes	D64
9 × 9, 13 mm max. tube diameter, holds 81 tubes	D81
10 × 10, 11.8 mm max. tube diameter, holds 100 tubes	D100

# Lost in Samples? Stay Organized!



Over many years, scientists collect hundreds and thousands of samples, samples that are the results of years of hard work: samples of high value.

When storing these, it is vital to keep them safe and accessible. Accurate sample labeling and proper storage in freezer boxes is only the beginning, you still need to maintain accurate records of the treasures in the freezer.

Many scientists still use spreadsheets or even paper-based lists to keep track of their storage. While these solutions may work most of the time, they are susceptible to human error, damage, and misplacement.

## Make science easier, make your life easier

Following the PhysioCare Concept®, we recommend to use an intuitive, reliable sample management tool. Take advantage of modern solutions to make the lab experience more comfortable and more efficient.

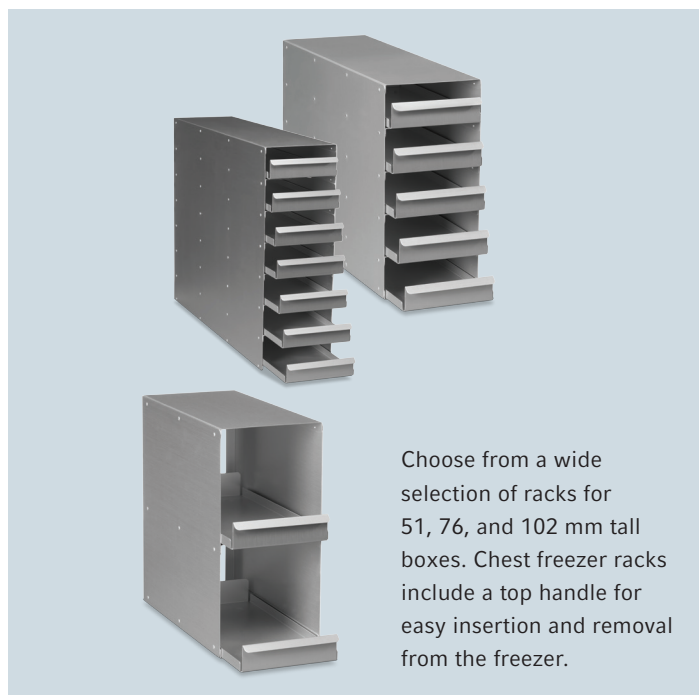
## Keep track of your samples with eLabInventory

eLabInventory is a sample management software provided by Bio-ITech. The tool organizes any item in the laboratory inventory, including specimens, materials, samples, and chemicals. Store samples in self-configured storage units such as freezers or refrigerators. eLabInventory is flexible and fully configurable to work in your laboratory.

- > Centralized system for single or multiple labs
- > Fully configurable to fit any type of laboratory
- > Stores any type of samples, specimens, and materials for high flexibility
- > Works on any device, delivered via the cloud or on-premise
- > Intuitive user interface includes visual inventory browsing for easy handling
- > Barcode labeling for high-throughput
- > Import/export to other formats for data flexibility
- > Track and tracing for audit trail
- > GLP compliant (21 CFR part 11) for documentation security

For more information about ordering, visit  
»[www.eLabInventory.com](http://www.eLabInventory.com)«

# Aluminum Racking



The aluminum racks are made of strong, non-corrosive aluminum for long-term use. Standard rackings are offered for 53 mm (2 inch), 76 mm (3 inch), and 102 mm (4 inch) box heights. The racks can be equipped with freezer boxes of up to 133 mm x 133 mm (footprint).

## Ordering information

Description	Order no.
<b>Upright freezer rack, Innova® U101</b>	
53 mm (2 in) tall box, 10 boxes per rack	K0641-3003
76 mm (3 in) tall box, 6 boxes per rack	K0641-3004
102 mm (4 in) tall box, 4 boxes per rack	K0641-3005
<b>Upright freezer rack, Innova® U360, U535, U725, and U725G</b>	
53 mm (2 in) tall box, 28 boxes per rack	K0641-3000
76 mm (3 in) tall box, 20 boxes per rack	K0641-3001
102 mm (4 in) tall box, 12 boxes per rack	K0641-3002
<b>Chest freezer rack, CryoCube® FC660 and FC660h, Innova® C585 and C760, Premium C340 and C660</b>	
53 mm (2 in) tall box, 13 boxes per rack	K0641-1690
76 mm (3 in) tall box, 9 boxes per rack	K0641-1700
102 mm (4 in) tall box, 6 boxes per rack	K0641-1750
<b>Upright freezer rack, CryoCube® F570 and F570h, HEF® U410, and Premium U410</b>	
53 mm (2 in) tall box, 16 boxes per rack	K0641-1900
76 mm (3 in) tall box, 12 boxes per rack	K0641-1890
102 mm (4 in) tall box, 8 boxes per rack	K0641-1880

# Stainless Steel Racking

The stainless steel racks are made of strong, non-corrosive steel for long-term use. Standard rackings are offered for a broad range of box heights and plates. The racks can be equipped with freezer boxes of up to 136 mm x 136 mm (footprint).

Freezer model	Box type or plate type class (incl. total height of rack)*						Racks per freezer	Boxes per rack	Total boxes per freezer	
	2 in or 53 mm	2.5 in or 64 mm	3 in or 76 mm	4 in or 102 mm	5 in or 127 mm (15/50 mL conical tube)	Deep well plate				MTP
<b>Innova® U725, U725-G (air &amp; water)</b>										
Drawer, stainless steel (D x W: 580 x 140 mm)	6001012210 (H: 404 mm)							18	28	504
		6001012910 (H: 412 mm)						18	24	432
			6001012310 (H: 414 mm)					18	20	360
				6001012410 (H: 324 mm)				18	12	216
					6001012510 (H: 414 mm)			18	12	216
Side access, stainless steel (D x W: 569 x 139 mm)	6001011210 (H: 389 mm)							18	28	504
		6001011910 (H: 394 mm)						18	24	432
			6001011310 (H: 404 mm)					18	20	360
				6001011410 (H: 318 mm)				18	12	216
					6001011510 (H: 409 mm)			18	12	216
					6001011110 (D x W x H: 549 x 139 x 389 mm)		18	42	756	
<b>CryoCube® F570, F570h, F570hw</b>										
Drawer, stainless steel (D x W: 563 x 140 mm)	6001022210 (H: 231 mm)							25	16	400
		6001022910 (H: 204 mm)						25	12	300
			6001022310 (H: 166 mm)					25	8	200
				6001022410 (H: 216 mm)				25	8	200
Side access, stainless steel (D x W: 569 x 139 mm)	6001021210 (H: 230 mm)							25	16	400
		6001021910 (H: 205 mm)						25	12	300
			6001021310 (H: 167 mm)					25	8	200
				6001021410 (H: 230 mm)				25	8	200
						6001021110 (D x W x H: 549 x 139 x 224 mm)		25	24	600
<b>Innova® U535</b>										
Drawer, stainless steel (D x W: 580 x 140 mm)	6001012210 (H: 404 mm)							12	28	336
		6001012910 (H: 412 mm)						12	24	288
			6001012310 (H: 414 mm)					12	20	240
				6001012410 (H: 324 mm)				12	12	144
					6001012510 (H: 414 mm)			12	12	144
Side access, stainless steel (D x W: 569 x 139 mm)	6001011210 (H: 389 mm)							12	28	336
		6001011910 (H: 394 mm)						12	24	288
			6001011310 (H: 404 mm)					12	20	240
				6001011410 (H: 318 mm)				12	12	144
					6001011510 (H: 409 mm)			12	12	144
						6001011110 (D x W x H: 549 x 139 x 389 mm)		12	42	504

D: Depth  
W: Width  
H: Height

\*Specifications are subject to change.



	Box type or plate type class (incl. total height of rack)*							Racks per freezer	Boxes per rack	Total boxes per freezer
	2 in or 53 mm	2.5 in or 64 mm	3 in or 76 mm	4 in or 102 mm	5 in or 127 mm (15/50 mL conical tube)	Deep well plate	MTP			
<b>Premium U410, HEF® U410</b>										
Drawer, stainless steel (D x W: 563 x 140 mm)	6001022210 (H: 231 mm)							15	16	240
		6001022910 (H: 204 mm)						15	12	180
			6001022310 (H: 166 mm)					15	8	120
				6001022410 (H: 216 mm)				15	8	120
Side access, stainless steel (D x W: 569 x 139 mm)	6001021210 (H: 230 mm)							15	16	240
		6001021910 (H: 205 mm)						15	12	180
			6001021310 (H: 167 mm)					15	8	120
				6001021410 (H: 230 mm)				15	8	120
						6001021110 (D x W x H: 549 x 139 x 224 mm)		15	24	360
<b>Innova® U360</b>										
Drawer, stainless steel (D x W: 580 x 140 mm)	6001012210 (H: 404 mm)							9	28	252
		6001012910 (H: 412 mm)						9	24	216
			6001012310 (H: 414 mm)					9	20	180
				6001012410 (H: 324 mm)				9	12	108
Side access, stainless steel (D x W: 569 x 139 mm)					6001012510 (H: 414 mm)			9	12	108
	6001011210 (H: 389 mm)							9	28	252
		6001011910 (H: 394 mm)						9	24	216
			6001011310 (H: 404 mm)					9	20	180
				6001011410 (H: 318 mm)				9	12	108
						6001011510 (H: 409 mm)		9	12	108
						6001011110 (D x W x H: 549 x 139 x 389 mm)	9	42	378	
<b>Innova® U101</b>										
Drawer, stainless steel (D x W: 308 x 145 mm)	6001062210 (H: 290 mm)							6	10	60
		6001062910 (H: 271 mm)						6	8	48
			6001062310 (H: 244 mm)					6	6	36
				6001062410 (H: 216 mm)				6	4	24
Side access, stainless steel (D x W: 290 x 142 mm)					6001062510 (H: 276 mm)			6	4	24
	6001061210 (H: 279 mm)							6	10	60
		6001061910 (H: 264 mm)						6	8	48
			6001061310 (H: 244 mm)					6	6	36
				6001061410 (H: 214 mm)				6	4	24
					6001061510 (H: 274 mm)		6	4	24	

D: Depth  
W: Width  
H: Height

\*Specifications are subject to change.

	Box type or plate type class (incl. total height of rack)*							Racks per freezer	Boxes per rack	Total boxes per freezer
	2 in or 53 mm	2.5 in or 64 mm	3 in or 76 mm	4 in or 102 mm	5 in or 127 mm (15/50 mL conical tube)	Deep well plate	MTP			
<b>Innova® C760</b>										
Side access, stainless steel, no locking rod (D x W: 141 x 141 mm)	6001040210 (H: 776 mm)							40	14	560
		6001000910 (H: 721 mm)						40	11	440
			6001000310 (H: 726 mm)					40	9	360
				6001000410 (H: 741 mm)				40	7	280
					6001000510 (H: 681 mm)			40	5	200
						6001040110 (D x W x H: 133 x 91 x 776 mm)		66	14	924
						6001040010 (D x W x H: 133 x 91 x 766 mm)	66	38	2508	
Side access, stainless steel, locking rod (D x W: 148 x 141 mm)	6001040211 (H: 776 mm)							40	14	560
		6001000911 (H: 721 mm)						40	11	440
			6001000311 (H: 726 mm)					40	9	360
				6001000411 (H: 741 mm)				40	7	280
						6001040111 (D x W x H: 140 x 91 x 776 mm)		66	14	924
							6001040011 (D x W x H: 140 x 91 x 766 mm)	66	38	2508
<b>CryoCube® FC660, FC660h</b>										
Side access, stainless steel, no locking rod (D x W: 141 x 141 mm)	6001050210 (H: 721 mm)							40	13	520
		6001000910 (H: 721 mm)						40	11	440
			6001000310 (H: 726 mm)					40	9	360
				6001000410 (H: 741 mm)				40	7	280
					6001000510 (H: 681 mm)			60	5	200
						6001050110 (D x W x H: 133 x 91 x 721 mm)		60	13	780
						6001050010 (D x W x H: 133 x 91 x 746 mm)	60	37	2220	
Side access, stainless steel, locking rod (D x W: 148 x 141 mm)	6001050211 (H: 721 mm)							36	13	468
		6001000911 (H: 721 mm)						36	11	396
			6001000311 (H: 726 mm)					36	9	324
				6001000411 (H: 741 mm)				36	7	252
						6001050111 (D x W x H: 140 x 91 x 721 mm)		60	13	780
							6001050011 (D x W x H: 140 x 91 x 746 mm)	60	37	2220
<b>Innova® C585</b>										
Side access, stainless steel, no locking rod (D x W: 141 x 141 mm)	6001040210 (H: 776 mm)							32	14	448
		6001000910 (H: 721 mm)						32	11	352
			6001000310 (H: 726 mm)					32	9	288
				6001000410 (H: 741 mm)				32	7	224
					6001000510 (H: 681 mm)			32	5	160
						6001040110 (D x W x H: 133 x 91 x 776 mm)		52	14	728
						6001040010 (D x W x H: 133 x 91 x 766 mm)	52	38	1976	
Side access, stainless steel, locking rod (D x W: 148 x 141 mm)	6001040211 (H: 776 mm)							32	14	448
		6001000911 (H: 721 mm)						32	11	352
			6001000311 (H: 726 mm)					32	9	288
				6001000411 (H: 741 mm)				32	7	224
						6001040111 (D x W x H: 140 x 91 x 776 mm)		52	14	728
							6001040011 (D x W x H: 140 x 91 x 766 mm)	52	38	1976

D: Depth  
W: Width  
H: Height  
\*Specifications are subject to change.

# How to Recognize Good ULT Freezers

## Volume

Check for volumes in liter scale or box number scale

## Insulation

Polyurethane foam is standard, Vacuum Insulated Panels are recommended for safe sample storage

## Racks

Freedom to operate with freezer boxes with up to 136 mm diameter

## Gaskets

Flat and flexible for optimal closing and lowest icing

## Door handle

Ergonomically designed door handle for easy access to samples

## Energy savings

Check the consumption of the freezer per day in kWh at -80 °C

## Compressor systems

Proved two-stage compressor systems for long-term working conditions

## Interface

Display to be located at eye-level for easy reading

## Vent port

Manual or even automated vent port for quick re-access to samples

## Door recovery time

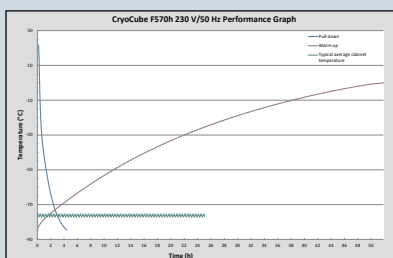
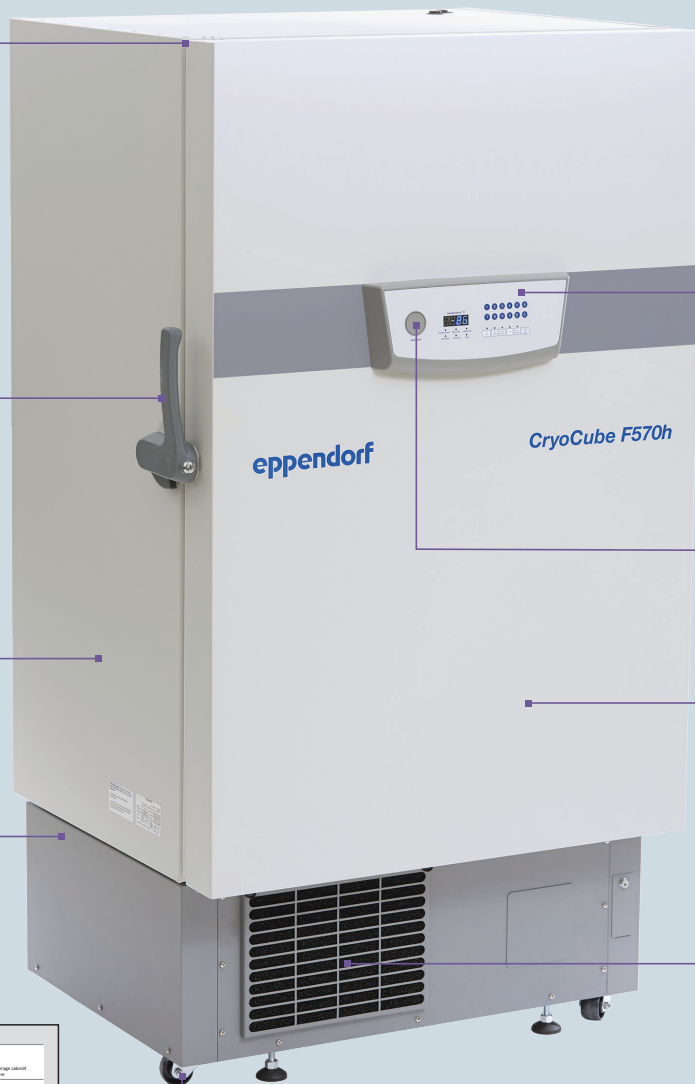
Time to reach standard temperature of -80 °C after opening the freezer door; the shorter the time, the safer your samples

## Filter access

Easy access to filter enables regular cleaning, resulting in better performance

## Heavy duty castors

If needed, the freezer has to easily be moved to a new position



## Warm up times

After a power failure, the freezer needs to keep the samples cold as long as possible



# Eppendorf Handling Solutions

Liquid Handling  
Cell Handling  
Sample Handling

We have been developing and producing well sophisticated, groundbreaking products and solutions in the areas of Liquid Handling, Cell Handling, and Sample Handling for more than 70 years. We always had one goal in mind: to make your job in the lab easier and more efficient.

To find out more about the Eppendorf product world, visit [www.eppendorf.com](http://www.eppendorf.com)

## Sample Handling



Eppendorf products set standards in a wide variety of laboratory areas at an early stage – standards that still serve as yardsticks for others today. Sample Handling encompasses many different work processes and steps: centrifugation, heating, freezing, mixing, amplification, and analysis of samples. Eppendorf offers the devices and consumables needed for each of these steps and allows users to feel assured that the work they perform is of the highest quality.



### ■ Eppendorf Tubes® 5.0 mL

Eppendorf Tubes 5.0 mL fill the gap between existing tube formats and enable the simple and safe processing of volumes up to 5.0 mL.

- > Ergonomic operation with snap cap or screw cap
- > Exceptionally high-quality, transparent polypropylene



### ■ Eppendorf Conical Tubes

The Eppendorf Conical Tubes 15 mL and 50 mL extend the volume range of Eppendorf's microcentrifuge tubes.

- > Convenient and safe cell culture applications
- > Sample preparation in microbiology and molecular biology labs



### ■ Eppendorf Microplates

The Eppendorf Microplates make it easier than ever to pipette, control, and recover samples with a polypropylene microplate.

- > Unmatched, transparent polypropylene (PP) for improved sample visibility
- > OptiTrack® Matrix: up to 30 % faster sample identification



### ■ Eppendorf BioSpectrometer® basic

The Eppendorf BioSpectrometer basic is a compact spectrophotometer that combines easy handling with highly reproducible analysis.

- > Absorbance measurement for one or more wavelengths; scans from 200 nm to 830 nm
- > Spectral graph to display sample purity with automatic ratio calculation



»Eppendorf ULT Freezers:  
Your samples are safe with us.«

**Your local distributor: [www.eppendorf.com/contact](http://www.eppendorf.com/contact)**  
Eppendorf AG · 22331 Hamburg · Germany  
[eppendorf@eppendorf.com](mailto:eppendorf@eppendorf.com) • [www.eppendorf.com](http://www.eppendorf.com)

[www.eppendorf.com/freezer](http://www.eppendorf.com/freezer)

The eLabiInventory® logo is a registered trademark of Bio-ITech BV, Netherlands. Eppendorf®, the Eppendorf logo, PhysioCare Concept®, Eppendorf BioSpectrometer®, and CryoCube® are registered trademarks of Eppendorf AG, Germany. Innova® and HEF® are registered trademarks of Eppendorf, Inc., USA.  
All rights reserved, including graphics and photos. Copyright © 2016 by Eppendorf AG. Order no AN.01811.020/GB0/10T/2017/EAG/STEFF