

Amersham ECL DualVue Western blotting markers

WESTERN BLOTTING

Visible on the blot and on film

Amersham™ ECL DualVue™ Western blotting markers contain both colored proteins and tagged proteins that introduce convenience and reliability, and facilitate accurate size determination of proteins on Western blots.

Three prestained indicator proteins can be visualized on the blot following transfer. This allows the efficiency of the transfer process to be monitored. The colored indicator bands also assist with the orientation of the gel and blot prior to chemiluminescent detection.

Seven recombinant proteins of known molecular weight, each containing a tagged region, can be detected on the same blot as the target protein of interest in an Amersham ECL™, ECL Plus™, or ECL Advance™ chemiluminescent reaction. The tagged region binds S-protein-HRP, which is simply added during either the primary or secondary antibody incubation steps. The tagged recombinant proteins are therefore detected at the same time as the protein of interest in a chemiluminescent reaction. Amersham ECL DualVue markers are compatible with both Hyperfilm™ and CCD imaging systems.

Accurate

- Three prestained colored indicator proteins, which can clearly be seen on the blot following transfer, ensure that transfer has been successful and facilitate correct blot orientation
- Seven tagged recombinant protein markers of known mass are detected on the film (or CCD image) in parallel with the target protein. This allows easy and accurate determination of the molecular weight of the target protein.

Convenient

- Easy to use formulation — one simple loading on the gel followed by addition of S-protein-HRP to the primary or secondary antibody incubation
- Each pack contains Amersham ECL DualVue markers and S-protein-HRP sufficient for 25 gel loadings

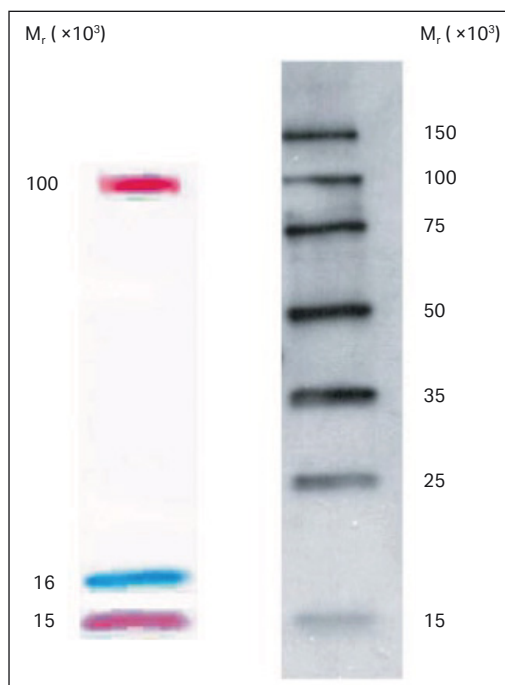


Fig 1. Amersham ECL DualVue Western blotting markers after electrophoresis on a 4–20% SDS-PAGE slab gel and transferred onto Hybond ECL nitrocellulose membrane showing: A, prestained indicator proteins; B, tagged proteins after detection with Amersham ECL Western blotting detection reagents. Electrophoresis performed for 45 min at 200 V with 1 min film exposure.

Compatible

Can be used with:

- All Amersham ECL reagents and other HRP substrates
- Hybond™ ECL nitrocellulose and Hybond-P PVDF membranes
- Hyperfilm detection or CCD imaging

Technical specifications

Protein	Mol. wt. (kDa)	Source	Amount (µg)
Prestained indicator proteins			
Phosphorylase b	100 000	Rabbit muscle	50
Myoglobin	16 000	Horse muscle	50
Lysozyme	15 000	Chicken egg white	50
Recombinant tagged proteins			
Recombinant protein	150 000		1
Recombinant protein	100 000		1
Recombinant protein	75 000		1
Recombinant protein	50 000		1
Recombinant protein	35 000		1
Recombinant protein	25 000		1
Recombinant protein	15 000		1

Ordering information

Amersham ECL DualVue Western blotting markers, 25 gel loadings (contains ECL DualVue markers, 125 µL; S-protein-HRP, 50 µL; optimized protocol)	RPN810
Related products	
Amersham ECL Advance Western blotting detection kit	RPN2135
Amersham ECL Western blotting detection reagents for 1000 cm ² membrane	RPN2109
Amersham ECL Western blotting detection reagents for 2000 cm ² membrane	RPN2209
Amersham ECL Western blotting detection reagents for 4000 cm ² membrane	RPN2106
Low-Range Rainbow™ molecular weight markers	RPN755
High-Range Rainbow molecular weight markers	RPN756
Full-Range Rainbow molecular weight markers	RPN800
ECL Western Blotting molecular weight markers, biotinylated	RPN2107
Hybond ECL membrane (nitrocellulose, pore size 0.45 µm)	RPN2020D
Hybond ECL membrane (nitrocellulose, pore size 0.2 µm)	RPN3032D
Hybond-P membrane (PVDF, pore size 0.45 µm)	RPN2020F
Hybond Blotting Paper, 20 × 20 cm, 100 sheets	RPN6101M
Hyperfilm ECL, 18 × 24 cm, pack of 25	RPN2103K
Hyperfilm ECL, 30 × 40 cm, pack of 25	RPN2104K
Hyperfilm ECL, 10 × 12 in, pack of 25	RPN1681K
Hyperfilm ECL, 5 × 7 in, pack of 25	RPN1674K
Mouse IgG, horseradish peroxidase linked whole antibody (from sheep)	NA931
Rabbit IgG, horseradish peroxidase linked whole antibody (from donkey)	NA934
Rat IgG, horseradish peroxidase linked whole antibody (from goat)	NA935I

cytiva.com/ecl

Cytiva and the Drop logo are trademarks of Global Life Sciences IP Holdco LLC or an affiliate. Amersham, ECL, ECL Advance, ECL DualVue, ECL Plus, Hybond, Hyperfilm and Rainbow are trademarks of Global Life Sciences Solutions USA LLC or an affiliate doing business as Cytiva.

© 2021 Cytiva

All goods and services are sold subject to the terms and conditions of sale of the supplying company operating within the Cytiva business. A copy of those terms and conditions is available on request. Contact your local Cytiva representative for the most current information.

For local office contact information, visit cytiva.com/contact

CY17823-18Jan21-DF

