

Amersham ECL DualVue Western Blotting Markers

Visible on the blot and on film

Amersham ECL DualVue™ Western Blotting Markers contain both colored proteins and tagged proteins that introduce convenience and reliability, and facilitate accurate size determination of proteins on Western blots.

Three prestained indicator proteins can be visualized on the blot following transfer. This allows the efficiency of the transfer process to be monitored. The colored indicator bands also assist with the orientation of the gel and blot prior to chemiluminescent detection.

Seven recombinant proteins of known molecular weight, each containing a tagged region, can be detected on the same blot as the target protein of interest in an Amersham ECL, ECL Plus™, or ECL Advance™ chemiluminescent reaction. The tagged region binds S-protein-HRP, which is simply added during either the primary or secondary antibody incubation steps. The tagged recombinant proteins are therefore detected at the same time as the protein of interest in a chemiluminescent reaction. Amersham ECL DualVue markers are compatible with both Hyperfilm™ and CCD imaging systems.

Accurate

- Three prestained colored indicator proteins, which can clearly be seen on the blot following transfer, ensure that transfer has been successful and facilitate correct blot orientation.
- Seven tagged recombinant protein markers of known mass are detected on the film (or CCD image) in parallel with the target protein. This allows easy and accurate determination of the molecular weight of the target protein.

Convenient

- Easy to use formulation—one simple loading on the gel followed by addition of S-protein-HRP to the primary or secondary antibody incubation.
- Each pack contains Amersham ECL DualVue markers and S-protein-HRP sufficient for 25 gel loadings.

Compatible

Can be used with:

- All Amersham ECL reagents and other HRP substrates.
- Hybond™ ECL nitrocellulose and Hybond-P PVDF membranes.
- Hyperfilm detection or CCD imaging.

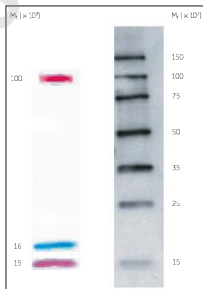


Fig 1. Amersham ECL DualVue Western Blotting Markers after electrophoresis on a 4–20% SDS-PAGE slab gel and transfer onto Hybond ECL nitrocellulose membrane showing: A, prestained indicator proteins; B, tagged proteins after detection with Amersham ECL Western Blotting Detection Reagents. Electrophoresis performed for 45 min at 200 V with 1-m film exposure.



Technical specifications

Protein	Mol. wt. (kDa)	Source	Amount (µg)
Prestained indicator proteins			
Phosphorylase b	100 000	Rabbit muscle	50
Myoglobin	16 000	Horse muscle	50
Lyszyme	15 000	Chicken egg white	50
Recombinant tagged proteins			
Recombinant protein	150 000		1
Recombinant protein	100 000		1
Recombinant protein	75 000		1
Recombinant protein	50 000		1
Recombinant protein	35 000		1
Recombinant protein	25 000		1
Recombinant protein	15 000		1

Ordering information

Amersham ECL DualVue Western Blotting Markers, 25 gel loadings (contains ECL DualVue markers, 125 µl; S-protein-HRP, 50 µl; optimized protocol) **RPN810**

Related products

Amersham ECL Advance Western Blotting Detection Kit **RPN2135**

Amersham ECL Western Blotting Detection Reagents for 1000 cm² membrane **RPN2109**

Amersham ECL Western Blotting Detection Reagents for 2000 cm² membrane **RPN2209**

Amersham ECL Western Blotting Detection Reagents for 4000 cm² membrane **RPN2106**

Low-Range Rainbow™ Molecular Weight Markers **RPN755**

High-Range Rainbow Molecular Weight Markers **RPN756**

Full-Range Rainbow Molecular Weight Markers **RPN800**

ECL Western Blotting Molecular Weight Markers, biotinylated **RPN2107**

Hybond ECL membrane (nitrocellulose, pore size 0.45 µm) **RPN2020D**

Hybond ECL membrane (nitrocellulose, pore size 0.2 µm) **RPN3032D**

Hybond-P membrane (PVDF, pore size 0.45 µm) **RPN2020F**

Hybond Blotting Paper, 20 x 20 cm, 100 sheets **RPN6101M**

Hyperfilm ECL, 18 x 24 cm, pack of 25 **RPN2103K**

Hyperfilm ECL, 30 x 40 cm, pack of 25 **RPN2104K**

Hyperfilm ECL, 10 x 12 in, pack of 25 **RPN1681K**

Hyperfilm ECL, 5 x 7 in, pack of 25 **RPN1674K**

Mouse IgG, horseradish peroxidase linked whole antibody (from sheep) **NA931**

Rabbit IgG, horseradish peroxidase linked whole antibody (from donkey) **NA934**

Rat IgG, horseradish peroxidase linked whole antibody (from goat) **NA935I**

Asia Pacific Tel: +65 6733 1830 Fax: +65 6733 1834 • Australia Tel: +61 7 5511 9989 Fax: +61 7 5599 1511 • Austria Tel: 01 673326-111 Fax: 01 673326-1679 • Belgium Tel: 0800 73 889 Fax: 02 616 87 85 • Canada Tel: 1 800 663 7730 Fax: 1 800 667 3308 • Central, South & South America Tel: +52 5 8719700 Fax: +52 5 8719700 • Denmark Tel: 66 15 2889 Fax: 66 16 1620 • New Zealand Tel: 0800 544800 Fax: 0800 30951110 • Finland & Baltic Tel: +358 09 632 38 00 Fax: +358 09 632 29 639 • France Tel: 02 4925 4700 Fax: 01 6941 3671 • Germany Tel: 089 36381 480 Fax: 089 36381 429 • Greece Centre Tel: +352 2109 4300 Fax: +352 2109 4330 • Hong Kong Tel: 02 27322 21 Fax: 02 27322 212 • Japan Tel: +81 3 5331 1211 Fax: +81 3 5331 5016 • Latin America Tel: +52 51 3533 7300 Fax: +52 51 3533 7304 • Middle East & Africa Tel: +971 4 211 5669 087 Fax: +971 4 211 5669 085 • Netherlands Tel: 0800 80 81 81 Fax: 0800 80 81 81 • Norway Tel: +47 22 55 55 55 Fax: +47 22 55 55 55 • Philippines Tel: +63 2 437 5306 • Poland & Czech C.R. Tel: +48 22 629 858 11 Fax: +48 22 629 858 1176 • Spain Tel: 91 594 68 50 Fax: 91 594 68 50 • Sweden Tel: 020 632 1900 Fax: 020 632 1212 • Switzerland Tel: 0848 6112 12 Fax: 0848 6128 13 • UK Tel: 0800 414608 Fax: 0800 616422 • USA Tel: +1 201 517 3693 Fax: +1 201 517 3722

www.gehealthcare.com/ecl

GE Healthcare Limited

Amersham Place

Little Chalfont

Buckinghamshire

HP7 9NA

UK

General Electric Company reserves the right, subject to any regulatory approval if required, to make changes in specifications and features shown herein, or discontinue the product described at any time without notice or obligation. Contact your GE representative for the most current information. © 2006 General Electric Company. All rights reserved. GE and GE Healthcare are trademarks of General Electric Company. Amersham, ECL, Advance, ECL DualVue, ECL Plus, Hybond™, Hyperfilm and Rainbow are trademarks of GE Healthcare Ltd.



imagination at work