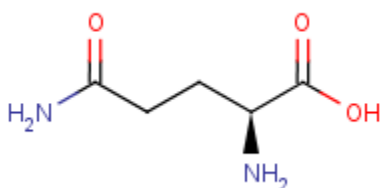


L-Glutamine

CAT N° : P1012

L-Glutamine is a non-essential amino acid

Molecular weight : 146,15 g/mol**CAS N°** : 56-85-9**Chemical formula** : C₅H₁₀N₂O₃

Physical Property	Value	Units	Temp (°C)
Melting Point	185.5	° C	
pKa Dissociation Constant	2.17	(none)	
Water Solubility	4.13E+04	mg/L	25

Storage conditions : Room temperature**Shelf life** : 24 months

Tests	General specifications
Description	white crystalline powder
Assay	≥ 99.0%
α _{20°C/D} ; 10 %, 7 % HCl	+31.5° - +33.0°
Arsenic	≤ 0.0001 %
Chloride	≤ 0.02%
Sulfate	≤ 0.02%
Pb	≤ 0.001 %
Iron	≤ 0.001 %

Recommended use :

- Respect storage conditions of the product
- Do not use the product after its expiry date
- Store the product in a dry area
- Wear clothes adapted to the manipulation of the product to avoid contamination (e.g. : gloves, mask, hygiene cap, overall...)
- Protect the product from any form of humidity
- Use, in one time, after opening, the entire quantity of product of the container. If it is not possible, close the container immediately after sampling the quantity of powder required.

The product is intended to be used in vitro, in laboratory only. Do not use it in therapy, human or veterinary applications.