

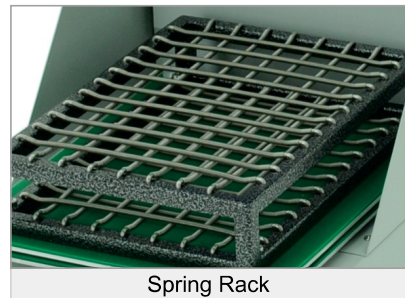
SHAKING INCUBATORS

MINI SHAKING INCUBATOR (NB-205)

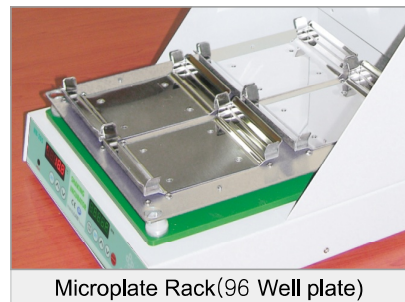
This is compact size shaking incubator while it has powerful shaking and large work space for various vessel platforms. With benefit of small foot print, it allows stable shaking and precise temperature control.



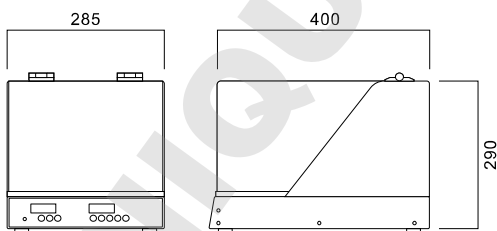
Flask Holder Rack



Spring Rack



Microplate Rack(96 Well plate)

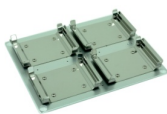


Accessories

Detail about accessories are written at the end of the section.



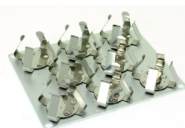
Spring Rack



Microplate Rack



100ml x 12ea



250ml x 8ea



500ml x 5ea



Holder

SHAKING INCUBATORS



Features

Compact but, Powerful

- **Microprocessor PID control**
Intelligence PID controls temperature and timer, built-in shaker.
- **Excellent Temperature Uniformity**
Due to small chamber and efficient air flow system, temperature uniformity is ideal.
- **Small Foot Print & Light Weight**
Compact & Light make it used widely at various space.
- **Easy-Placing of vessel rack or platform**
Without any bolts fastening on accessory platform, the platform is placed easily on shakers as well as works even in high RPM.
- **Automatic Stop when opening door**
The shaker automatically stops if the door is opened.
- **BLDC motor system**
Brushless DC motor installed in shaker of NB-205 allows no vibration, no particle occurrence, no noise which enhance stable running of shaker. Its flat construction minimizes vibration.



Specification

Items	Unit	NB-205
Temperature		
range	°C	Ambient +5°C to 60°C
accuracy	°C	±0.25°C at 37°C
increment	°C	±0.1°C
control		Microprocessor digital PID
Speed		
range	rpm	30 to 300rpm
accuracy	rpm	±1rpm
increment	rpm	±1rpm
Time		
range		Continuous or up to 47h 59min
accuracy		±1min
Motor		Plate Type Brushless DC Motor
Temp. Controller		Microprocessor Digital PID
Drive system		Beltless Direct Drive
Orbit Diameter	mm	22mm
Operating panel		Touch Button
Platform size	mm	250(W)x310(D)mm
Dimensions	mm	285(W)x400(D)x290(H)mm
Power	V/Hz	110/220V, 50/60Hz, 250W
Weight	kg	13kg