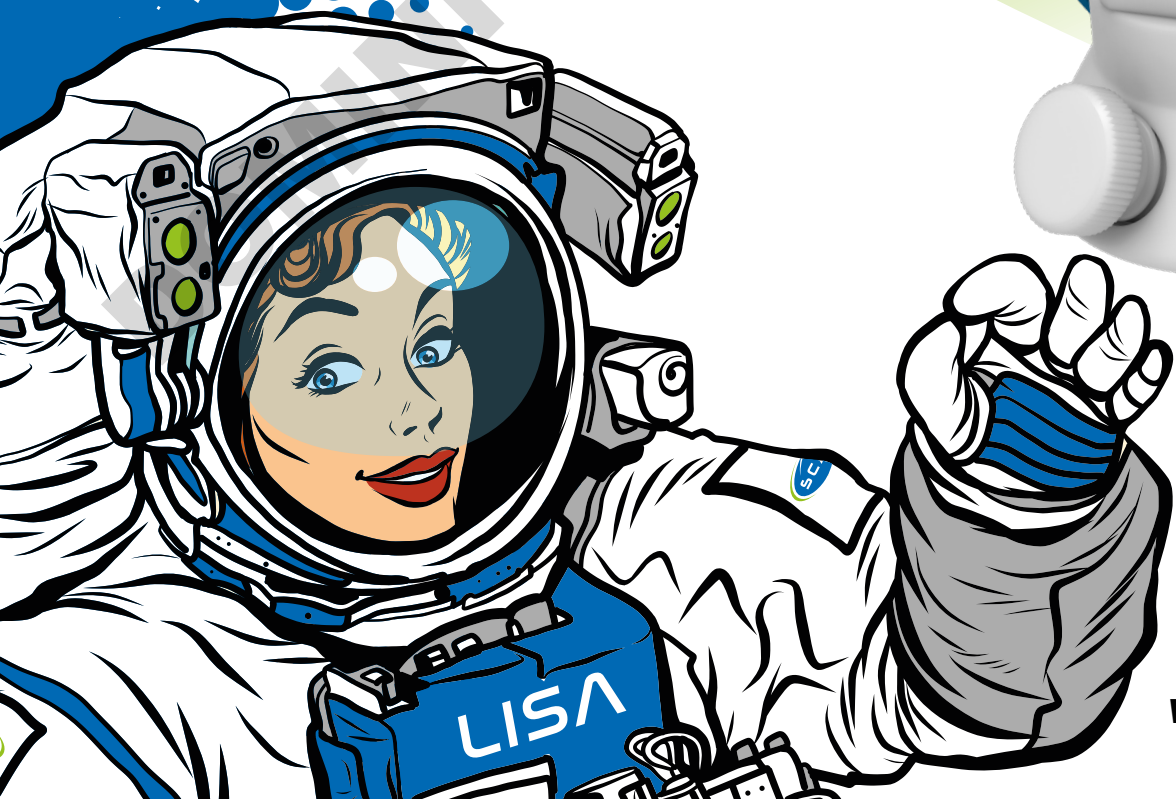




**THE No. 1 System  
for Solvent Safety**

# **NEW: "Lisa"** **Safety Waste Cap V3.0**

Collect HPLC / UHPLC Waste safely



**Protection No.  
20 2022 100 117**  
at the German Patent  
and Trade Mark Office

[www.scatt-europe.com](http://www.scatt-europe.com)

# Lisa The Systematic Docking Station

## ✓ Blind Plugs

In addition to blind plugs, various different components from our product range can be connected to the M 30 x 35 thread.

## ✓ PP Tube Connectors

Connections for larger tubing, having an inner diameter of 5.0 - 11.5 mm. Within the scope of supply of the "Lisa" are included **3 tube connectors**, with an NPT 1/8" thread.



## ✓ Satellite made of PTFE

Our satellite is made of (pure) PTFE, for optimal chemical resistance. The cap can be rotated through 360°, in order to allow for simple exchange of the container, without any resultant twisting of tubing.

## ✓ PFA Fittings

Improved design, for even easier connection of capillaries. Excellent chemical resistance. Flammability Classification V-0, as per UL-94.

Has standard connections for HPLC capillaries of outer diameter 1.6mm, 2.3mm or 3.2mm. The scope of supply of the "Lisa" includes **12 fittings** with a UNF 1/4" thread.

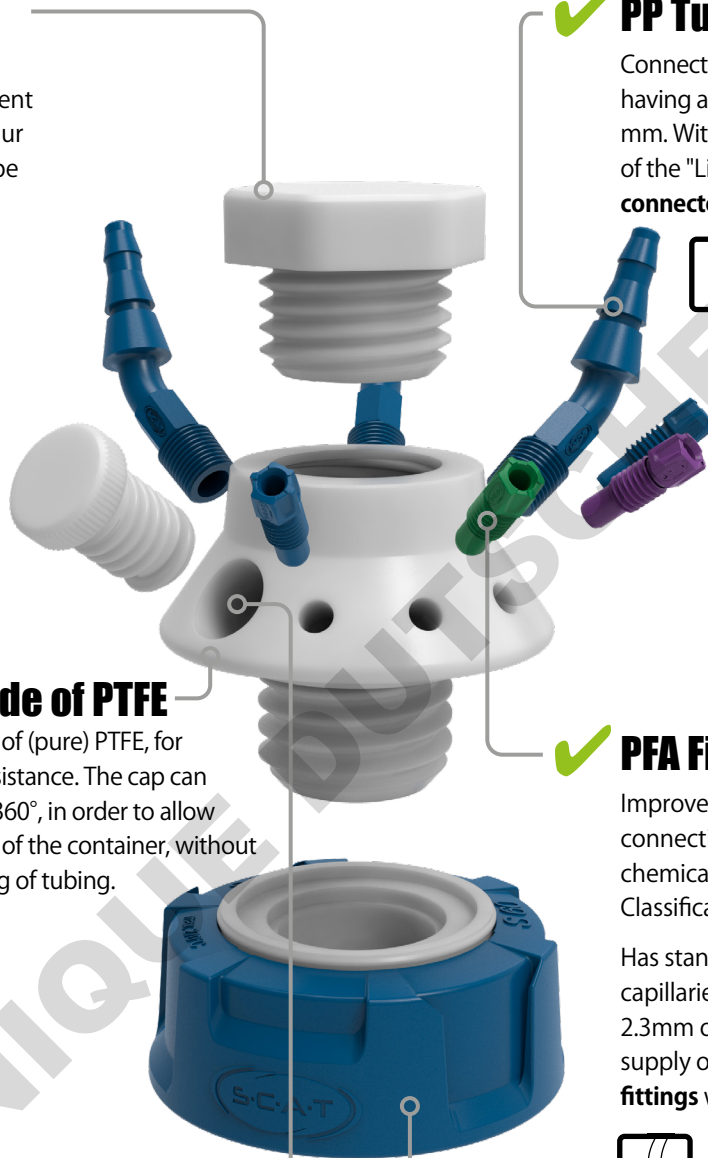
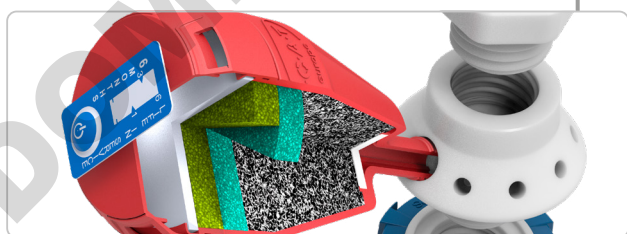


## ✓ GL 14 Connection for Exhaust Filters

The Safety Waste Cap V3.0 "Lisa" has a connection for all exhaust filters from our product range. With the aid of optimized active carbon, SCAT exhaust filters block harmful vapours, thereby ensuring for safe pressure equalization in the waste containers of your HPLC systems.

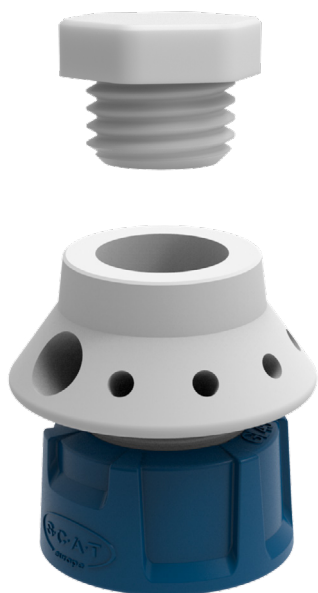
## ✓ Screw Cap made of PPS

Suitable for various collecting containers. Simple installation and easy exchange. Autoclavable / sterilizable, up to 200°C. Flammability Classification V-0, as per UL-94. Stable Construction. Improved handling.



# Lisa Comprehensive Basis Module

The basis module comprises a Safety Waste Cap V3.0 "Lisa" that includes your chosen thread size. A further **23 ancillary parts** are contained within the scope of supply.

**A**

## Safety Waste Cap V3.0 "Lisa"

- With blind plug M 30 x 35
- GL 45 thread of cap
- 3 tube connections (NPT 1/8")
- 4 HPLC connections (UNF 1/4" 28 G)
- 1 exhaust filter connection (GL 14)

**B**

## Safety Waste Cap V3.0 "Lisa"

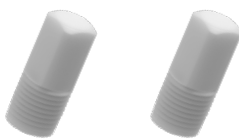
- Made of PTFE-EL
- With blind plugs M 30 x 35
- S 60/61 thread of cap
- 3 tube connectors (NPT 1/8")
- 4 HPLC connections (UNF 1/4" 28 G)
- 1 exhaust filter connection (GL 14)

Ancillaries incl. = as per Fig. **A**



### 3 Tube Connectors

- Ø 5.0 - 11.5 mm OD
- Thread NPT 1/8"
- For tube connections
- Generation 2.0
- PP, blue



### 3 Blind Plugs

- Thread NPT 1/8"
- For tube connections
- PTFE, white



### 4 Fittings

- Ø 3.2 mm ID
- Thread UNF 1/4"
- For HPLC connections
- PFA, blue



### 4 Fittings

- Ø 2.3 mm ID
- Thread UNF 1/4"
- For HPLC connections
- PFA, violet



### 4 Fittings

- Ø 1.6 mm ID
- Thread UNF 1/4"
- For HPLC connections
- PFA, green



### 4 Blind Plugs

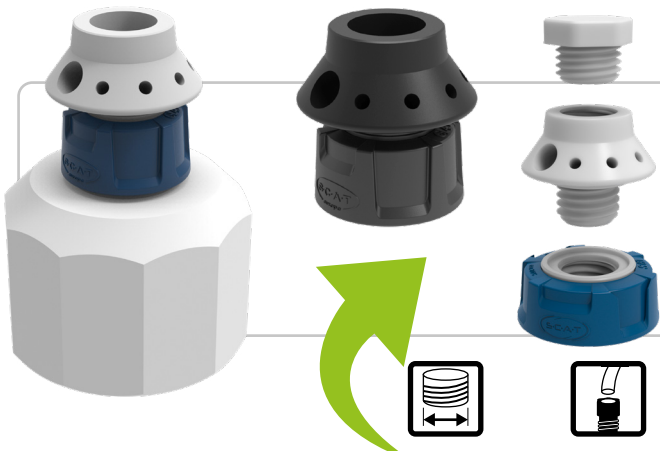
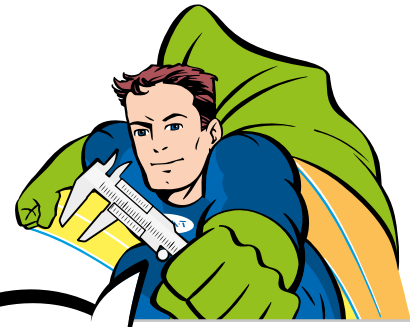
- Thread UNF 1/4"
- For HPLC connections
- PFA, colourless



### 1 Blind Plug

- Thread GL 14
- For exchange filter connection
- With FKM sealing ring
- PTFE, white

# Lisa with Varying Thread Sizes



**DETERMINE YOUR THREAD!**

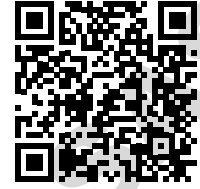


Fig.	Part No.	Description	Thread Size	Connections for Ø 1.6 / 2.3 / 3.2 mm OD capillaries	Connections for Ø 5.0-11.5 mm ID tubes	Blind Plugs	Connection for Exhaust Filter	Electrically Conductive	PU
<b>A</b>	<b>350045</b>	Safety Waste Cap "LISA" V3.0 GL 45	<b>GL 45</b>	<b>4 x</b>	3 x	9 x	●	-	1
	<b>450045</b>	Safety Waste Cap "LISA" V3.0 GL 45	<b>GL 45</b>	<b>4 x</b>	3 x	9 x	●	●	1
	<b>350050</b>	Safety Waste Cap "LISA" V3.0 S 50	<b>S 50</b>	<b>4 x</b>	3 x	9 x	●	-	1
	<b>350051</b>	Safety Waste Cap "LISA" V3.0 S 51	<b>S 51</b>	<b>4 x</b>	3 x	9 x	●	-	1
	<b>350053</b>	Safety Waste Cap "LISA" V3.0 B 53	<b>B 53</b>	<b>4 x</b>	3 x	9 x	●	-	1
	<b>350055</b>	Safety Waste Cap "LISA" V3.0 S 55	<b>S 55</b>	<b>4 x</b>	3 x	9 x	●	-	1
	<b>350060</b>	Safety Waste Cap "LISA" V3.0 S 60/61	<b>S 60/61</b>	<b>4 x</b>	3 x	9 x	●	-	1
<b>B</b>	<b>450060</b>	Safety Waste Cap "LISA" V3.0 S 60/61	<b>S 60/61</b>	<b>4 x</b>	3 x	9 x	●	●	1
	<b>350063</b>	Safety Waste Cap "LISA" V3.0 B 63	<b>B 63</b>	<b>4 x</b>	3 x	9 x	●	-	1
	<b>350065</b>	Safety Waste Cap "LISA" V3.0 S 65	<b>S 65</b>	<b>4 x</b>	3 x	9 x	●	-	1
	<b>350070</b>	Safety Waste Cap "LISA" V3.0 S 70/71	<b>S 70/71</b>	<b>4 x</b>	3 x	9 x	●	-	1
	<b>350083</b>	Safety Waste Cap "LISA" V3.0 B 83	<b>B 83</b>	<b>4 x</b>	3 x	9 x	●	-	1
	<b>350090</b>	Safety Waste Cap "LISA" V3.0 S 90	<b>S 90</b>	<b>4 x</b>	3 x	9 x	●	-	1
	<b>350095</b>	Safety Waste Cap "LISA" V3.0 S 95	<b>S 95</b>	<b>4 x</b>	3 x	9 x	●	-	1
<b>C</b>	<b>350100</b>	Extension Safety Waste Cap "LISA" V3.0	<b>M 30 x 35</b>	<b>4 x</b>	3 x	9 x	●	-	1
<b>D</b>	<b>450100</b>	Extension Safety Waste Cap "LISA" V3.0	<b>M 30 x 35</b>	<b>4 x</b>	3 x	9 x	●	●	1

# Lisa Extensions & Ancillaries

**C** 350 100



**Lisa**  
V3.0, M 30 x 35,  
Extension, PTFE

**D** 450 100



**Lisa**  
V3.0, M 30 x 35,  
Extension, PTFE-EL

**E** 350 110



**Blind Plug**  
Satellite "LISA",  
M 30 x 35, PTFE

**F** 450 110



**Blind Plug**  
Satellite "LISA",  
M 30 x 35, PTFE-EL

**G** 350 120



**Deckeltrichter**  
"Marco"  
M 30 x 35, 2.3 mm AD

**H** 450 120




**Deckeltrichter**  
"Marco"  
M 30 x 35, 2.3 mm AD

**I** 117 808




**Tube Connector**  
curved  
5.0 - 11.5 mm OD

**J** 160 506



PTFE

**K** 160 523



PTFE-EL

**Blind Plug**  
for tube connections  
NPT 1/8"

**L** 410 534



**Exhaust Filter S**  
V3.0, with indicator

**M** 410 535




**Exhaust Filter M**  
V3.0, with indicator

**N** 407 986



**Exhaust Filter L**  
V3.0, with indicator

**O** 107 620



PTFE

**P** 107 680



PTFE-EL

**Blind Plug**  
for exhaust filter  
connection, GL 14

# Lisa Extensions & Ancillaries

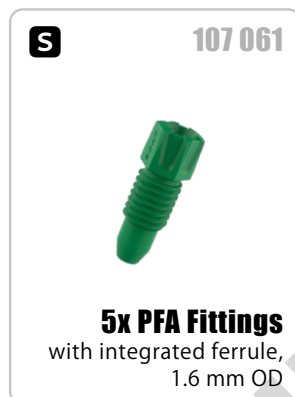
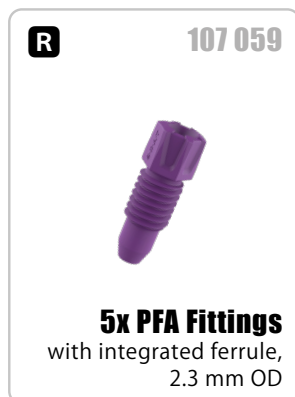
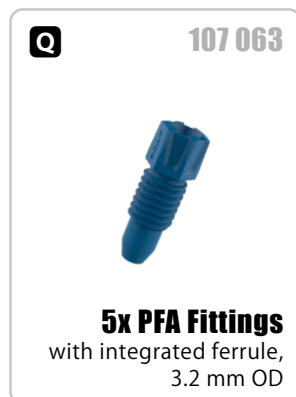
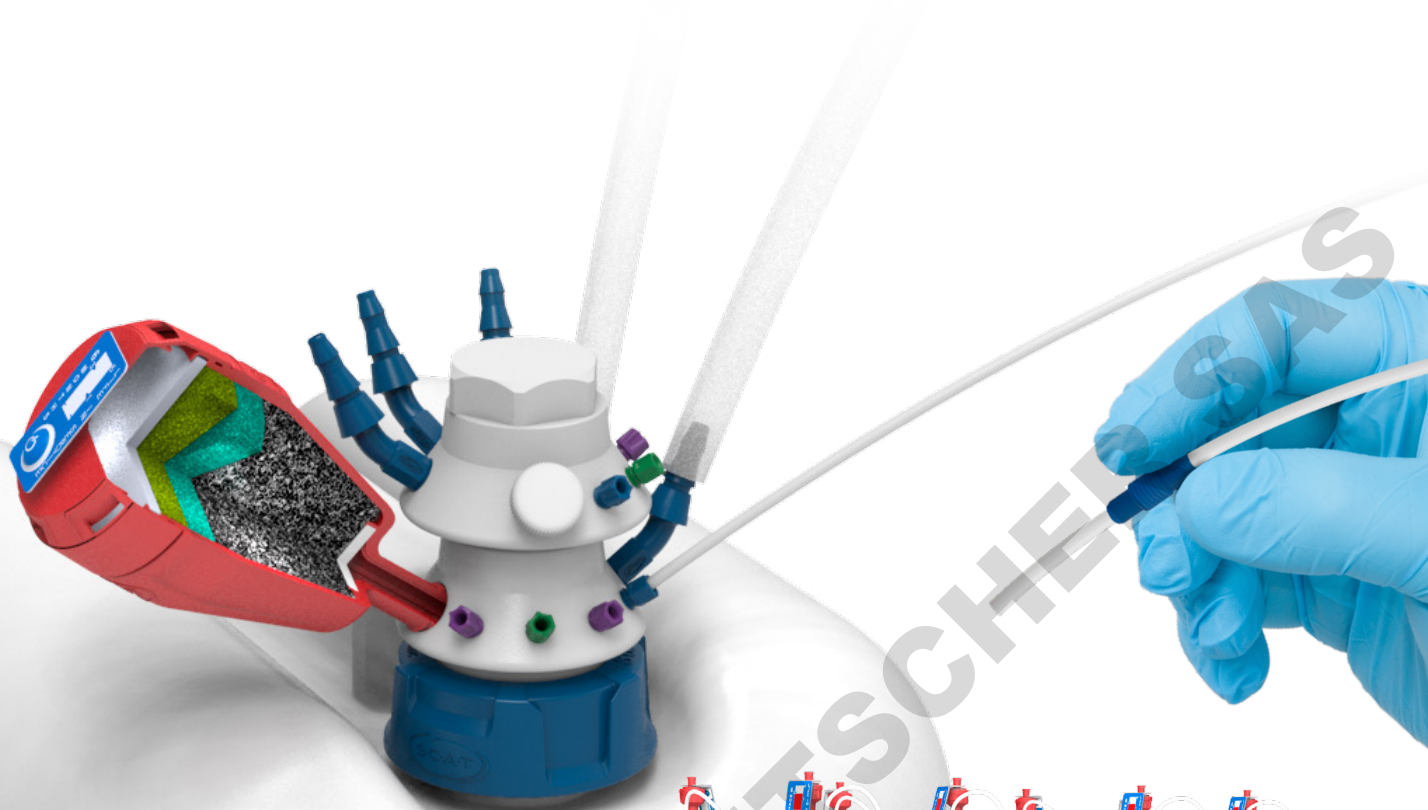


Fig.	Part No.	Description	Thread Size	Electrically Conductive	PU
<b>E</b>	<b>350110</b>	Blind Plug Satellite "LISA", M 30 x 35, PTFE	<b>M 30 x 35</b>	-	1
<b>F</b>	<b>450110</b>	Blind Plug Satellite "LISA", M 30 x 35, PTFE-EL electrically conductive	<b>M 30 x 35</b>	●	1
<b>G</b>	<b>350120</b>	Funnel with lid, "MARCO", PE-HD, removable sieve	<b>M 30 x 35</b>	-	1
<b>H</b>	<b>450120</b>	Funnel with lid, "MARCO", PE-HD electrically conductive, removable sieve	<b>M 30 x 35</b>	●	1
<b>I</b>	<b>117808</b>	Tube Connector, curved, 5.0 - 11.5 mm OD	<b>NPT 1/8"</b>	-	1
<b>J</b>	<b>160506</b>	Blind Plug, PTFE, NPT 1/8"	<b>NPT 1/8"</b>	-	1
<b>K</b>	<b>160523</b>	Blind Plug, PTFE-EL electrically conductive, NPT 1/8"	<b>NPT 1/8"</b>	●	1
<b>L</b>	<b>410534</b>	Exhaust Filter S, V3.0, with time indicator	<b>GL 14</b>	-	1
	<b>490335</b>	4x Exhaust Filter S, V3.0, with time indicator	<b>GL 14</b>	-	4
<b>M</b>	<b>410535</b>	Exhaust Filter M, V3.0, with time indicator	<b>GL 14</b>	-	1
	<b>490336</b>	2x Exhaust Filter M, V3.0, with time indicator	<b>GL 14</b>	-	2
<b>N</b>	<b>407986</b>	Exhaust Filter L, V3.0, with time indicator	<b>GL 14</b>	-	1
	<b>490986</b>	2x Exhaust Filter L, V3.0, with time indicator	<b>GL 14</b>	-	2
<b>O</b>	<b>107620</b>	Blind Plug, PTFE, for exhaust filter connection, GL14	<b>GL14</b>	-	1
<b>P</b>	<b>107680</b>	Blind Plug, PTFE-EL electrically conductive, for exhaust filter connection, GL14	<b>GL14</b>	●	1
<b>Q</b>	<b>107063</b>	5x PFA Fitting with integrated ferrule, 3.2 mm OD, blue	<b>UNF 1/4"</b>	-	5
<b>R</b>	<b>107059</b>	5x PFA Fitting with integrated ferrule, 2.3 mm OD, violet	<b>UNF 1/4"</b>	-	5
<b>S</b>	<b>107061</b>	5x PFA Fitting with integrated ferrule, 1.6 mm OD, green	<b>UNF 1/4"</b>	-	5
<b>T</b>	<b>160502</b>	5x Blind Plug for capillary connection UNF 1/4" 28G, PFA, colourless	<b>UNF 1/4"</b>	-	5
	<b>160501</b>	10x Blind Plug for capillary connection UNF 1/4" 28G, PFA, colourless	<b>UNF 1/4"</b>	-	10

# Lisa Application Example



Safety Waste Cap V3.0  
"Lisa" with funnel  
extension, used together  
with an HPLC system of  
our own brand, "SymLine".





## SCAT Europe GmbH

Waldecker Straße 7  
64546 Mörfelden-Walldorf  
Germany

 **+49 (0) 61 05 / 30 55 86 - 0**

 **+49 (0) 61 05 / 30 55 86 - 99**

 **info@scat-europe.com**

 **www.scat-europe.com**



## SCAT Americas, Inc.

1704 East Blvd., Suite 101  
Charlotte, NC 28203  
USA

 **+1.704.438.9477**

 **+1.704.373.2603**

 **info@scat-americas.com**

 **www.scat-americas.com**

