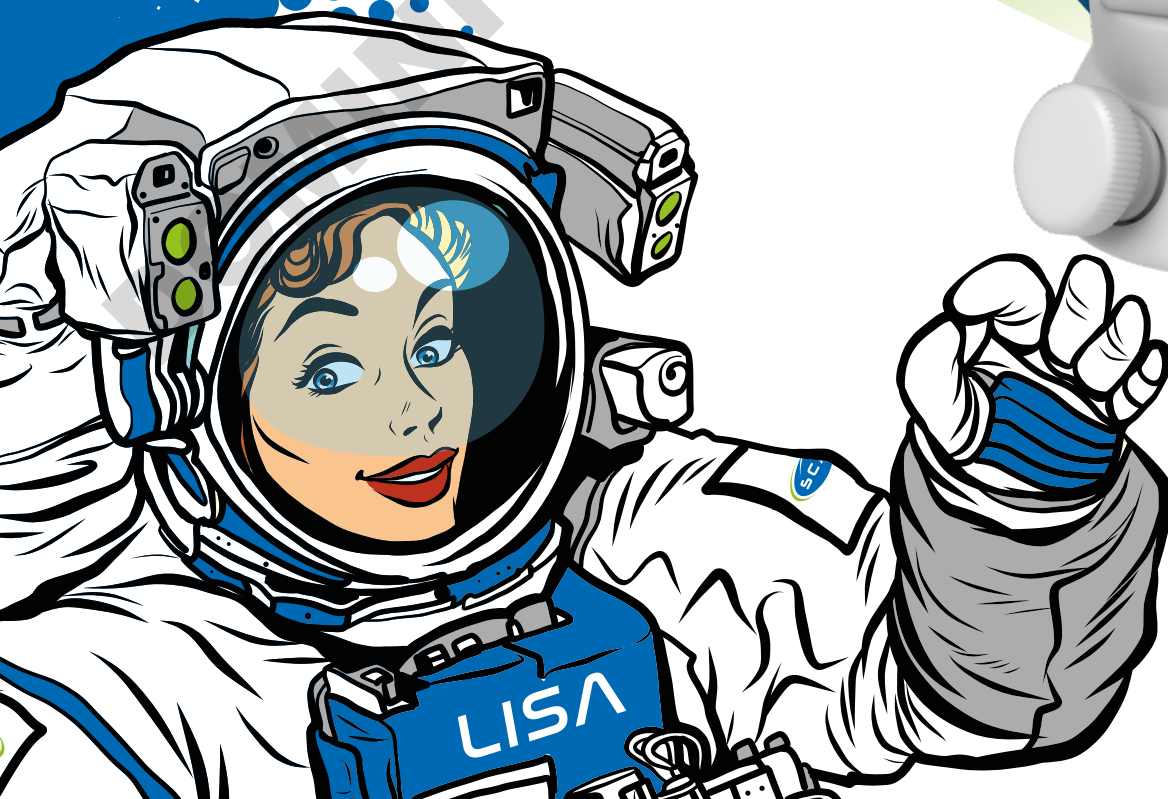




THE No. 1 System
for Solvent Safety

NEW: "Lisa" Safety Waste Cap V3.0

Collect HPLC / UHPLC Waste safely



Protection No.
20 2022 100 117
at the German Patent
and Trade Mark Office

www.scatt-europe.com

Lisa The Systematic Docking Station

✓ Blind Plugs

In addition to blind plugs, various different components from our product range can be connected to the M 30 x 35 thread.

✓ PP Tube Connectors

Connections for larger tubing, having an inner diameter of 5.0 - 11.5 mm. Within the scope of supply of the "Lisa" are included **3 tube connectors**, with an NPT 1/8" thread.



✓ Satellite made of PTFE

Our satellite is made of (pure) PTFE, for optimal chemical resistance. The cap can be rotated through 360°, in order to allow for simple exchange of the container, without any resultant twisting of tubing.

✓ PFA Fittings

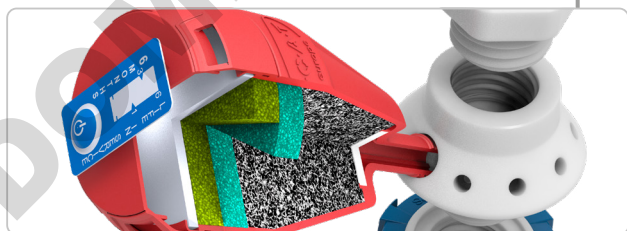
Improved design, for even easier connection of capillaries. Excellent chemical resistance. Flammability Classification V-0, as per UL-94.

Has standard connections for HPLC capillaries of outer diameter 1.6mm, 2.3mm or 3.2mm. The scope of supply of the "Lisa" includes **12 fittings** with a UNF 1/4" thread.



✓ GL 14 Connection for Exhaust Filters

The Safety Waste Cap V3.0 "Lisa" has a connection for all exhaust filters from our product range. With the aid of optimized active carbon, SCAT exhaust filters block harmful vapours, thereby ensuring for safe pressure equalization in the waste containers of your HPLC systems.



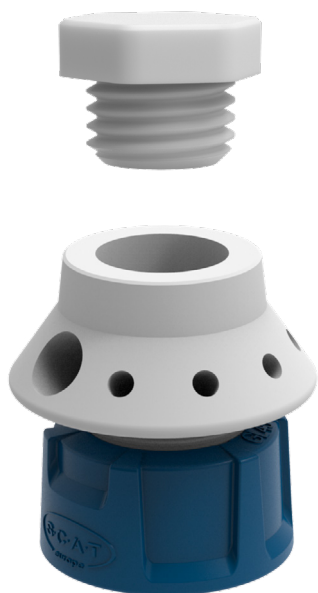
✓ Screw Cap made of PPS

Suitable for various collecting containers. Simple installation and easy exchange. Autoclavable / sterilizable, up to 200°C. Flammability Classification V-0, as per UL-94. Stable Construction. Improved handling.



Lisa Comprehensive Basis Module

The basis module comprises a Safety Waste Cap V3.0 "Lisa" that includes your chosen thread size. A further **23 ancillary parts** are contained within the scope of supply.

A

Safety Waste Cap V3.0 "Lisa"

- With blind plug M 30 x 35
- GL 45 thread of cap
- 3 tube connections (NPT 1/8")
- 4 HPLC connections (UNF 1/4" 28 G)
- 1 exhaust filter connection (GL 14)

B

Safety Waste Cap V3.0 "Lisa"

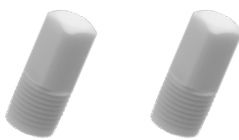
- Made of PTFE-EL
- With blind plugs M 30 x 35
- S 60/61 thread of cap
- 3 tube connectors (NPT 1/8")
- 4 HPLC connections (UNF 1/4" 28 G)
- 1 exhaust filter connection (GL 14)

Ancillaries incl. = as per Fig. **A**



3 Tube Connectors

- Ø 5.0 - 11.5 mm OD
- Thread NPT 1/8"
- For tube connections
- Generation 2.0
- PP, blue



3 Blind Plugs

- Thread NPT 1/8"
- For tube connections
- PTFE, white



4 Fittings

- Ø 3.2 mm ID
- Thread UNF 1/4"
- For HPLC connections
- PFA, blue



4 Fittings

- Ø 2.3 mm ID
- Thread UNF 1/4"
- For HPLC connections
- PFA, violet



4 Fittings

- Ø 1.6 mm ID
- Thread UNF 1/4"
- For HPLC connections
- PFA, green



4 Blind Plugs

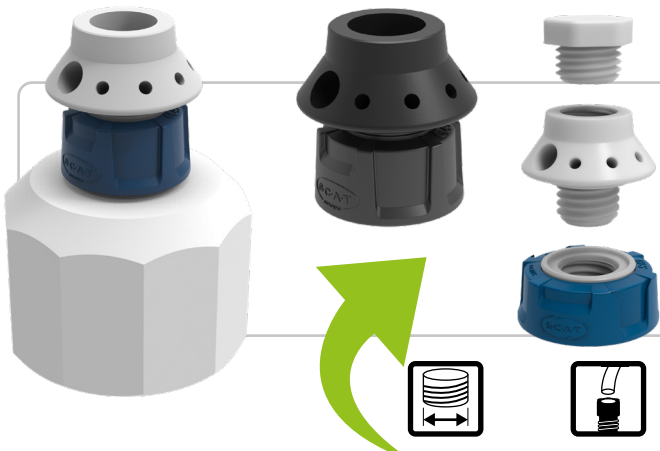
- Thread UNF 1/4"
- For HPLC connections
- PFA, colourless



1 Blind Plug

- Thread GL 14
- For exchange filter connection
- With FKM sealing ring
- PTFE, white

Lisa with Varying Thread Sizes



DETERMINE YOUR THREAD!

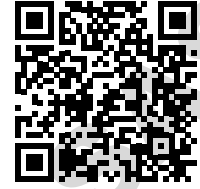
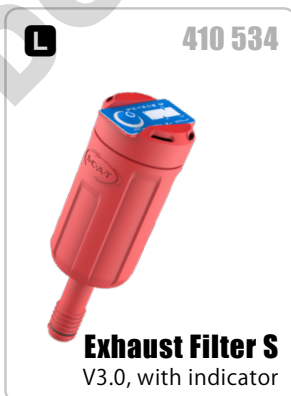
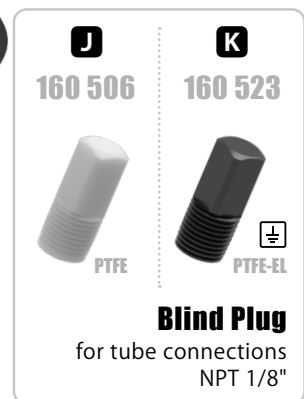


Fig.	Part No.	Description	Thread Size	Connections for Ø 1.6 / 2.3 / 3.2 mm OD capillaries	Connections for Ø 5.0-11.5 mm ID tubes	Blind Plugs	Connection for Exhaust Filter	Electrically Conductive	PU
A	350045	Safety Waste Cap "LISA" V3.0 GL 45	GL 45	4 x	3 x	9 x	●	-	1
	450045	Safety Waste Cap "LISA" V3.0 GL 45	GL 45	4 x	3 x	9 x	●	●	1
	350050	Safety Waste Cap "LISA" V3.0 S 50	S 50	4 x	3 x	9 x	●	-	1
	350051	Safety Waste Cap "LISA" V3.0 S 51	S 51	4 x	3 x	9 x	●	-	1
	350053	Safety Waste Cap "LISA" V3.0 B 53	B 53	4 x	3 x	9 x	●	-	1
	350055	Safety Waste Cap "LISA" V3.0 S 55	S 55	4 x	3 x	9 x	●	-	1
	350060	Safety Waste Cap "LISA" V3.0 S 60/61	S 60/61	4 x	3 x	9 x	●	-	1
B	450060	Safety Waste Cap "LISA" V3.0 S 60/61	S 60/61	4 x	3 x	9 x	●	●	1
	350063	Safety Waste Cap "LISA" V3.0 B 63	B 63	4 x	3 x	9 x	●	-	1
	350065	Safety Waste Cap "LISA" V3.0 S 65	S 65	4 x	3 x	9 x	●	-	1
	350070	Safety Waste Cap "LISA" V3.0 S 70/71	S 70/71	4 x	3 x	9 x	●	-	1
	350083	Safety Waste Cap "LISA" V3.0 B 83	B 83	4 x	3 x	9 x	●	-	1
	350090	Safety Waste Cap "LISA" V3.0 S 90	S 90	4 x	3 x	9 x	●	-	1
	350095	Safety Waste Cap "LISA" V3.0 S 95	S 95	4 x	3 x	9 x	●	-	1
C	350100	Extension Safety Waste Cap "LISA" V3.0	M 30 x 35	4 x	3 x	9 x	●	-	1
D	450100	Extension Safety Waste Cap "LISA" V3.0	M 30 x 35	4 x	3 x	9 x	●	●	1

Lisa Extensions & Ancillaries



Lisa Extensions & Ancillaries

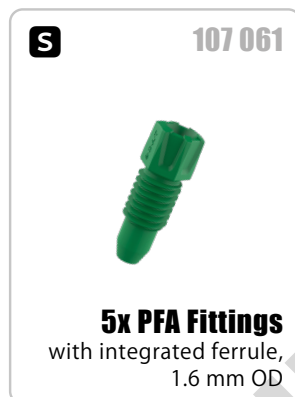
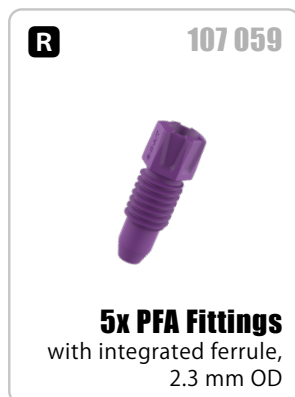
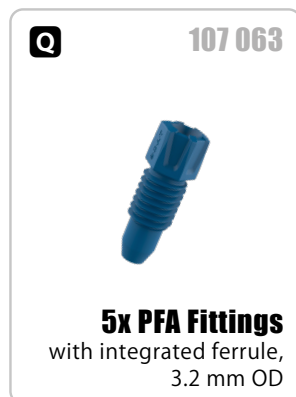
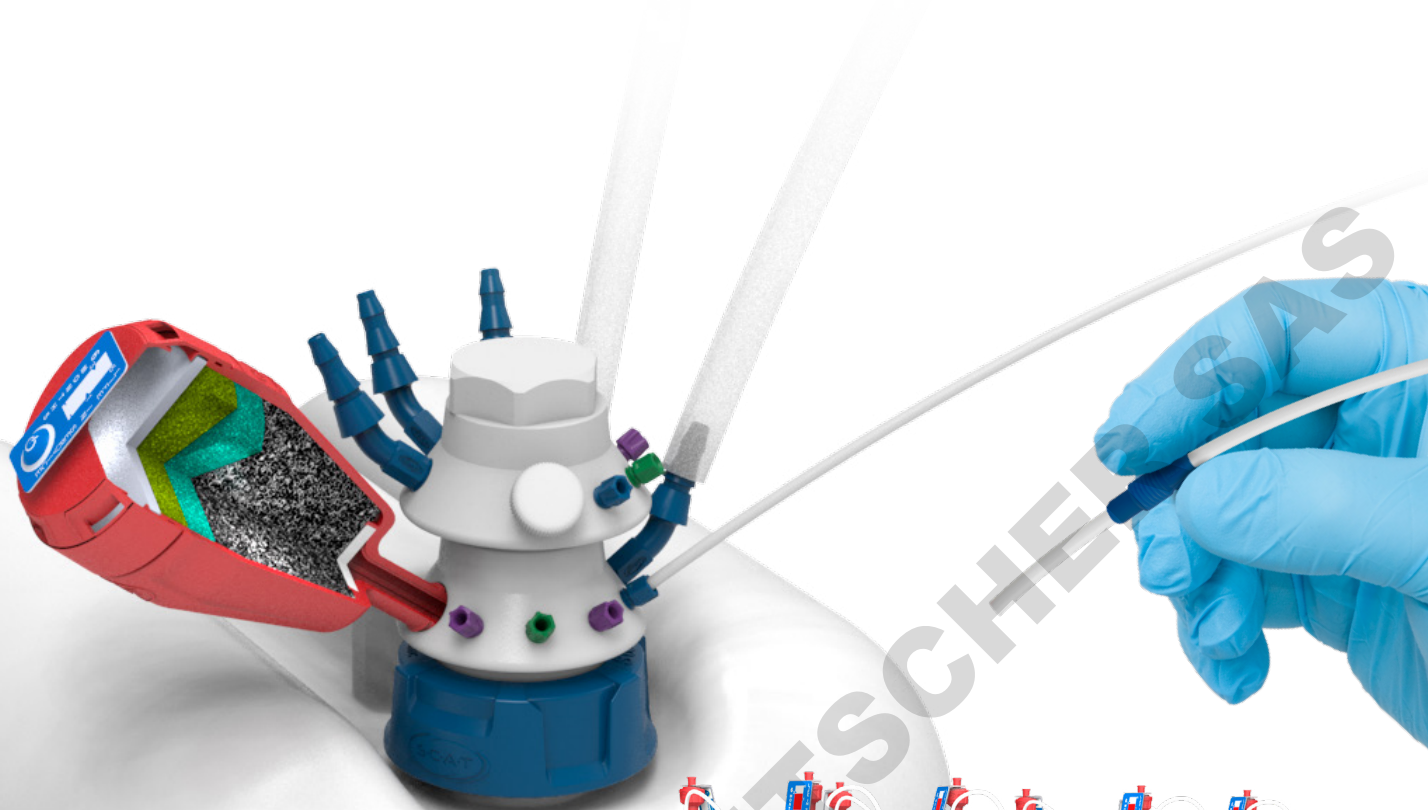


Fig.	Part No.	Description	Thread Size	Electrically Conductive	PU
E	350110	Blind Plug Satellite "LISA", M 30 x 35, PTFE	M 30 x 35	-	1
F	450110	Blind Plug Satellite "LISA", M 30 x 35, PTFE-EL electrically conductive	M 30 x 35	●	1
G	350120	Funnel with lid, "MARCO", PE-HD, removable sieve	M 30 x 35	-	1
H	450120	Funnel with lid, "MARCO", PE-HD electrically conductive, removable sieve	M 30 x 35	●	1
I	117808	Tube Connector, curved, 5.0 - 11.5 mm OD	NPT 1/8"	-	1
J	160506	Blind Plug, PTFE, NPT 1/8"	NPT 1/8"	-	1
K	160523	Blind Plug, PTFE-EL electrically conductive, NPT 1/8"	NPT 1/8"	●	1
L	410534	Exhaust Filter S, V3.0, with time indicator	GL 14	-	1
	490335	4x Exhaust Filter S, V3.0, with time indicator	GL 14	-	4
M	410535	Exhaust Filter M, V3.0, with time indicator	GL 14	-	1
	490336	2x Exhaust Filter M, V3.0, with time indicator	GL 14	-	2
N	407986	Exhaust Filter L, V3.0, with time indicator	GL 14	-	1
	490986	2x Exhaust Filter L, V3.0, with time indicator	GL 14	-	2
O	107620	Blind Plug, PTFE, for exhaust filter connection, GL14	GL14	-	1
P	107680	Blind Plug, PTFE-EL electrically conductive, for exhaust filter connection, GL14	GL14	●	1
Q	107063	5x PFA Fitting with integrated ferrule, 3.2 mm OD, blue	UNF 1/4"	-	5
R	107059	5x PFA Fitting with integrated ferrule, 2.3 mm OD, violet	UNF 1/4"	-	5
S	107061	5x PFA Fitting with integrated ferrule, 1.6 mm OD, green	UNF 1/4"	-	5
T	160502	5x Blind Plug for capillary connection UNF 1/4" 28G, PFA, colourless	UNF 1/4"	-	5
	160501	10x Blind Plug for capillary connection UNF 1/4" 28G, PFA, colourless	UNF 1/4"	-	10

Lisa Application Example



Safety Waste Cap V3.0
"Lisa" with funnel
extension, used together
with an HPLC system of
our own brand, "SymLine".





SCAT Europe GmbH

Waldecker Straße 7
64546 Mörfelden-Walldorf
Germany

 **+49 (0) 61 05 / 30 55 86 - 0**

 **+49 (0) 61 05 / 30 55 86 - 99**

 **info@scat-europe.com**

 **www.scat-europe.com**



SCAT Americas, Inc.

1704 East Blvd., Suite 101
Charlotte, NC 28203
USA

 **+1.704.438.9477**

 **+1.704.373.2603**

 **info@scat-americas.com**

 **www.scat-americas.com**

