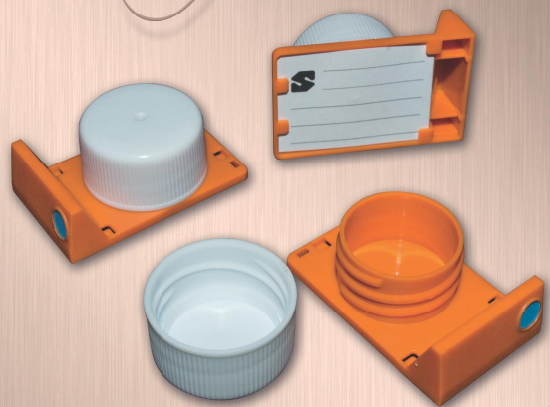


*Simport*



*CryoSette™*  
*Frozen Tissue Storage Containers*



2588 Bernard-Pilon  
Beloeil, Quebec  
J3G 4S5  
Canada

T - 450 464-1723  
F - 450 464-3394  
info@simport.com  
www.simport.com

Distributed by:

MKT-M956LL1P4 — 06/07/2018 Printed in Canada



*Simport*

# The CryoSette™

Frozen Tissue Storage Containers



[www.simport.com](http://www.simport.com)

# M956 CryoSette™

## Frozen Tissue Storage Containers

### M956O

Base made of acetal  
Screw closure made of high-density polyethylene

- Offers sample specimen storage in upright chest freezers and vapor-phase Dewar flasks at -196 °C\*
- 2D Barcoding available for efficient sample tracking
- Maintains the integrity of tissue samples
- Choice of two storage boxes
- 95 kPa tested

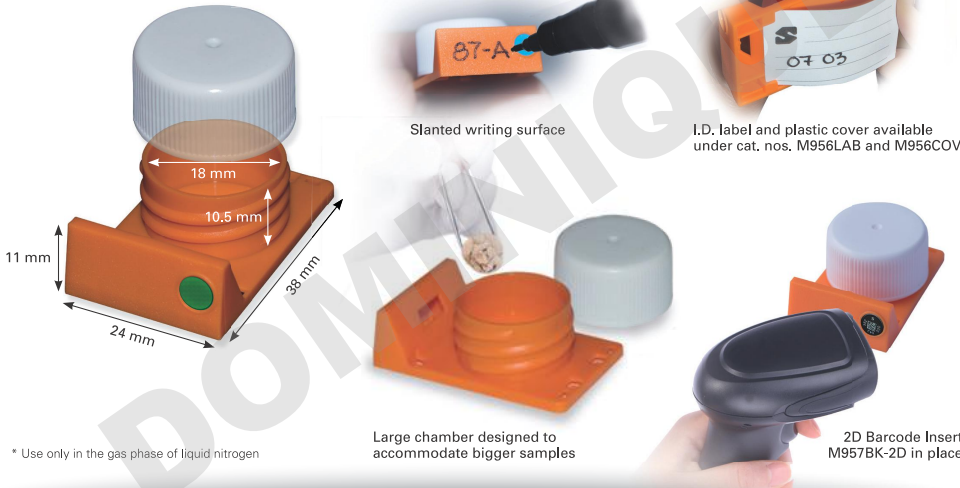
The Simport CryoSette™ is designed for frozen tissue collection, transport and storage. It can also be used for storing a multitude of other specimens in all laboratories. The robust design of the cryosette ensures that tissue morphology will be well preserved.

This 2.5 ml container features a wide-mouth opening and a high integrity screw closure. It is designed with a flat bottom and straight sides for easy tissue removal. The specific shape of the Cryosette allows its manipulation to be optimized, whether you are using gloves or not. The CryoSette™ efficiently stores tissue samples in -86 °C ULT freezers or in the gas phase of liquid nitrogen in Dewar flasks at -196 °C but not in LN<sub>2</sub> liquid phase.

The CryoSette™ screw closure and base are designed so they will not seize at low temperatures. Rapid visual 1 1/4 turn, even during repeated freeze / thaw cycles. Color-coded inserts are available in 5 colors.

The CryoSette™ offers two surfaces for handwriting or applying barcode labels: an anterior surface and a larger space underneath the base. A thin cardboard I.D. label and a plastic transparent cover are available for the latter. A 2D barcode insert can also be placed on the anterior writing surface for rapid visual sample identification. The CryoSette™ is compatible with common tracking methods. The anterior writing surface is improved for ink adherence.

The large size of the CryoSette™ chamber is suitable for most storage applications.  
Chamber dimensions: 21 mm O.D x 18 mm I.D. x 10.5 mm H.  
Total CryoSette™ dimensions : 24 mm x 38 mm x 11 mm H.



\* Use only in the gas phase of liquid nitrogen

Large chamber designed to accommodate bigger samples

2D Barcode Insert M957BK-2D in place

# M956-21 and M956-40

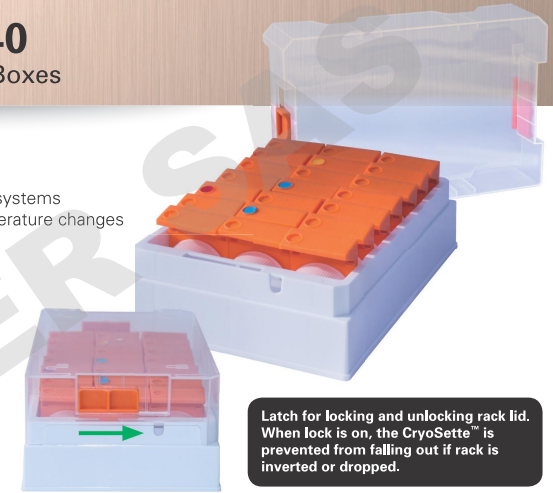
## CryoSette™ Frozen Tissue Storage Boxes

### M956-21 made of polypropylene

- Compatible with leading frozen sample storage systems
- Thick walls minimizing deformation due to temperature changes
- Can be handled by robotic equipment
- Rack orientation marks on sides
- Latches for locking and unlocking rack lid
- Autoclavable

The M956-21 storage rack is designed to contain 21 frozen tissue CryoSette™ containers. The box is compact and has an SBS standard footprint to make suitable to several robotic storage systems. These innovative boxes can be stored in low-temperature freezers.

Temperature range -196 °C to 121 °C. Suitable for cryogenic storage, but only in gas phase of liquid nitrogen.  
Dimensions : 127,76 mm x 85,48 mm x 41,6 mm H.



Latch for locking and unlocking rack lid. When lock is on, the CryoSette™ is prevented from falling out if rack is inverted or dropped.

### M956-40 made of polycarbonate

The M956-40 CryoSette™ storage box can accommodate up to 40 Tissue Storage Containers in a space as small as 133 x 133 x 52 mm H. Made of extra strong polycarbonate, this durable cryogenic storage box is designed to be used at temperatures between -196 °C and +121 °C and are autoclavable at 120 °C, 15 psig (1 bar) for 20 minutes. Only in gas phase of LN<sub>2</sub>.

The frosted cover allows the user to write directly on top of the box, and is keyed to the base to prevent misalignment.



### M957BK-2D

2D Bar Code Insert allows for immediate coding of your samples.

The 2D Insert is manually pushed in and locks into place on top of the slanted front marking surface.

Inserts are generated by a permanent laser etching system which provides sharper detail and are tested to ensure readability and uniqueness.

Cat. #	Description	Qty/Pk	Qty/Cs
M956O	CryoSette™ Tissue Storage Container	50	250
M956-21W	CryoSette™ 21 Place Storage Box	–	10
M956-40B	CryoSette™ 40 Place Storage Box (Separator included)	5	10
M956SEP	Cardboard Separator kit for M956-40B	–	6
M956LAB	Cardboard I.D. Label for M956	100	–
M956COV	Transparent Plastic I.D. Label Cover for M956	100	–
M957BK-2D	CryoSette™ 2D Barcode Insert	100	500
M957B	CryoSette™ Color Insert – Blue	100	500
M957G	CryoSette™ Color Insert – Green	100	500
M957L	CryoSette™ Color Insert – Lilac	100	500
M957R	CryoSette™ Color Insert – Red	100	500
M957Y	CryoSette™ Color Insert – Yellow	100	500

Available options: Sterile, pre-capped with screw caps