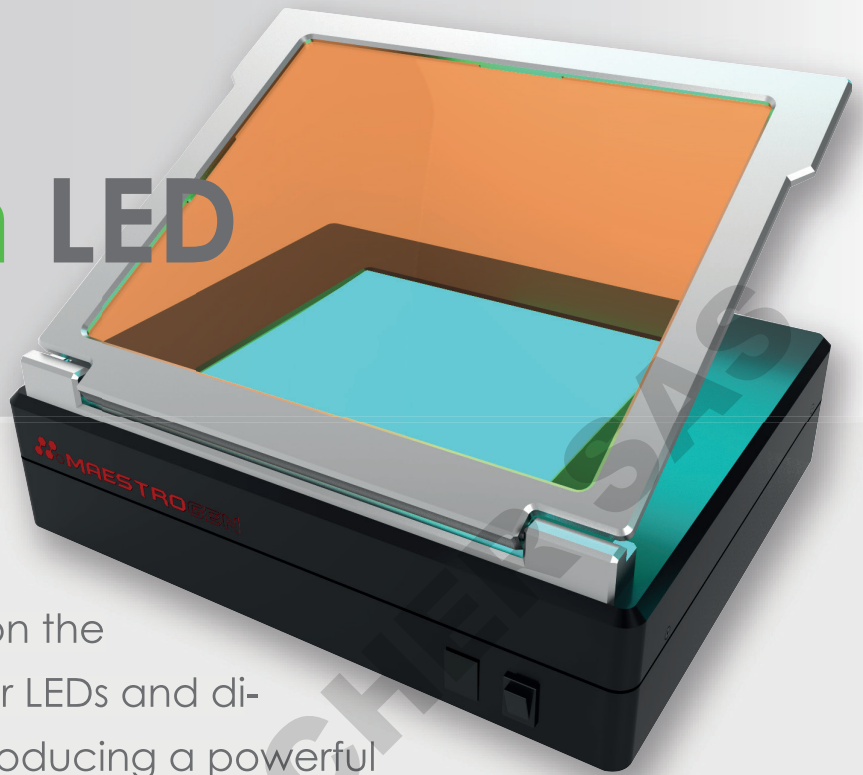


UltraBright[®] Blue/Green LED

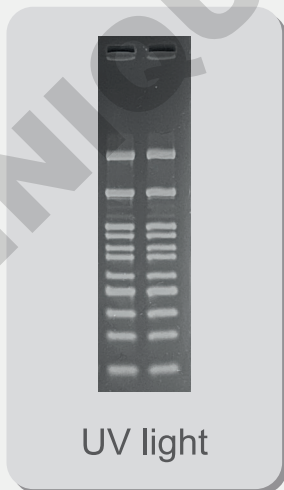
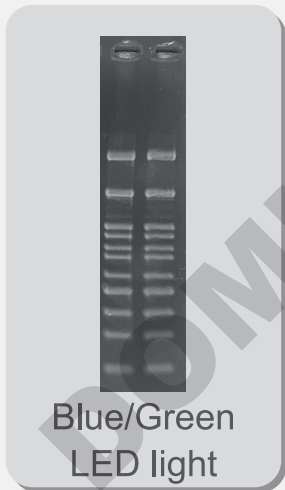
TRANSILLUMINATOR



MaestroGen UltraBright Blue/Green LED Transilluminator is designed for viewing stained gels on the laboratory bench. With high power LEDs and dichroic filter inside the instrument producing a powerful emission light and remove background completely, effective for the excitation stains such as EtBr, SYBR Green, GelGreen, GelRED, GFP, EGF-Pand. In addition, the light source won't be caused DNA degradation.

Specification

Cat. NO.:	LB-18
Wavelength:	505nm
Light Source:	Nichia LED
Viewing Size:	160(D)*200(W)mm
Blocking Cover:	Aluminum alloy metal frame
Consumption:	24 Watt
Filter:	Amber color
Power:	AC100-240V~50/60 Hz
Weight:	3.8 Kg
Dimensions:	280(D)* 340(W)* 80(H)mm



Comparison the Ethidium Bromide gel results with Blue/Green LED light and UV light