

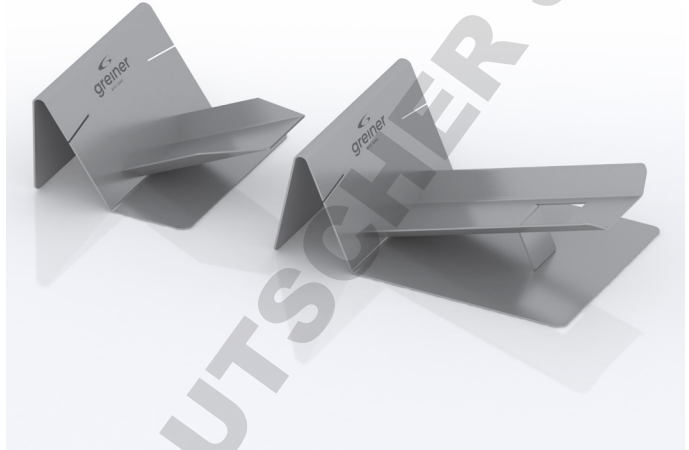
Instructions for Use

CELLstage - Filling Accessory for CELLdisc™



Product Details

CELLstage is an accessory for the optimum positioning of CELLdisc™ during the filling process (30° and 20° to the horizontal plane for CD4-CD24 and CD40, respectively). Furthermore, the ideal location of the filling channel in the 105° position for right-handed users and the 255° position for left-handed individuals is indicated by a slit on the respective side of the device (see also figure 3 in chapter “CELLdisc™ filling procedure using CELLstage” of this document). CELLstage can be sterilized by common sterilization methods like UV radiation, wiping with 70% of ethanol or autoclave sterilization. It may remain under the laminar airflow cabinet as long as required. If specific sterilization procedures other than mentioned are required, their applicability has to be assessed based on the material resistance of stainless steel – the material CELLstage is made from.



CELLdisc™ filling procedure using CELLstage on the reverse side →

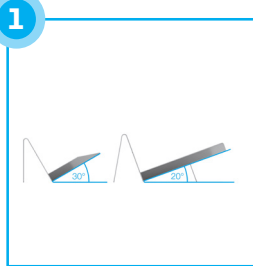
Item No.	Material	Measure [mm]	Weight [kg]
878072 (for CELLdisc™ 4-24 layers)	stainless steel	219 x 211 x 126	1.53
878073 (for CELLdisc™ 40 layers)	stainless steel	311 x 211 x 141	2.29

For further information please visit our website www.gbo.com or contact us.

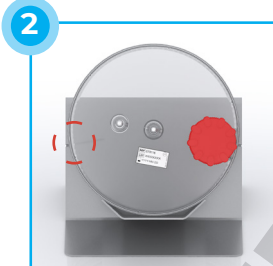
Greiner Bio-One:

Austria office@at.gbo.com	Belgium info@be.gbo.com	Brazil office@br.gbo.com	China office@cn.gbo.com	France accueil@gbo.com	Germany info@de.gbo.com	Hungary office@hu.gbo.com
Italy office@it.gbo.com	Japan info@jp.gbo.com	Netherlands info@nl.gbo.com	Portugal info@vacuette.pt	Spain info@es.gbo.com	UK info@uk.gbo.com	USA office@us.gbo.com

CELLdisc™ filling procedure using CELLstage



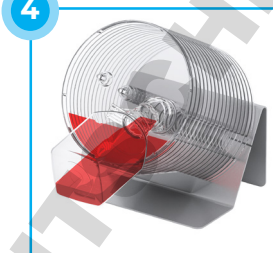
1 CELLstage guarantees an exact filling angle of 30° for CD4-CD24 (878072) and 20° for CD40 (878073).



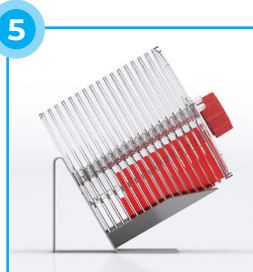
2 Position CELLdisc™ on the filling accessory with the screw cap either at 105° for right-handed users or 255° for left-handed users (indicated by ()).



3 A slit on either side marks the exact position. The slit should be in the middle of the filling channel.



4 Fill in the required amount of medium. The medium will fill the topmost layer first and then move slowly to each layer underneath.



5 Wait until the liquid is distributed into the individual layers before firmly tightening the screw cap to close it.



6 For liquid equilibration, take CELLdisc™ out of the CELLstage, lay it down horizontally and turn it to assure that the medium and all layers are in contact through the central filling channel.



7 Turn CELLdisc™ as indicated to disconnect mediumflow from the filling channel. Do not rotate CELLdisc™ any further as this could lead to wetting of the filter.



8 Put CELLdisc™ in an upright position and place it on a horizontal surface inside the incubator. Proceed with the cultivation based on the appropriate protocol.



For further information about the complete filling procedure and use of CELLdisc™ please visit our website www.gbo.com and download the CELLdisc™ Instruction for Use F000360 or see the animation of CELLdisc™ handling.