

THE WORLD'S FASTEST AUTOMATED CELL COUNTER

**LESS THAN 1 SEC!**

**EVE™ PLUS**



NanoEntek

**EVE™ PLUS**, Automated cell counter, with states-of-the-art optics provides image analysis for cell counting. The EVE™ PLUS is a benchtop size counter, designed to measure live, dead, and total counting, which gives us capability for viability with accuracy.

## Key features and benefits

### **FAST**

- Count less than 1 second

### **EASY**

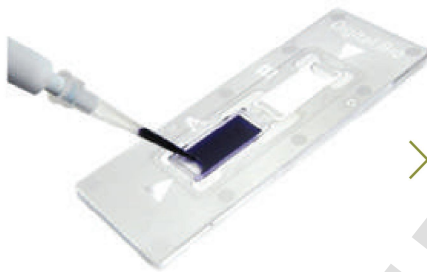
- Trypan blue staining method
- Auto focus, Manual focus
- Monitor to view the cell images
- Not required maintenance
- Small and compact (benchtop size)

### **ACCURATE**

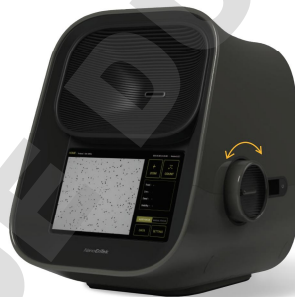
- Automated image analysis
- Count aggregated cell
- Cell size gating function (select range of cell size)
- Applicable for broad range of cell sizes and types

## Convenient for use

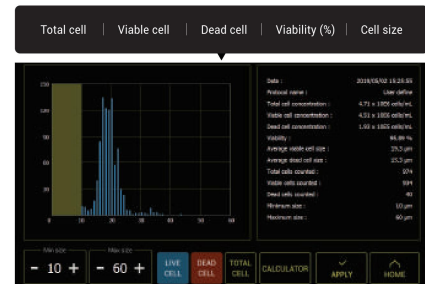
STEP 01. Load the sample



STEP 02. Adjust the focus

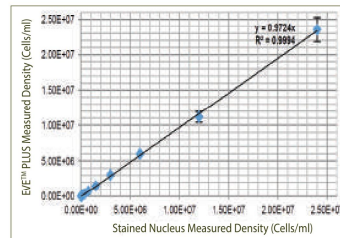
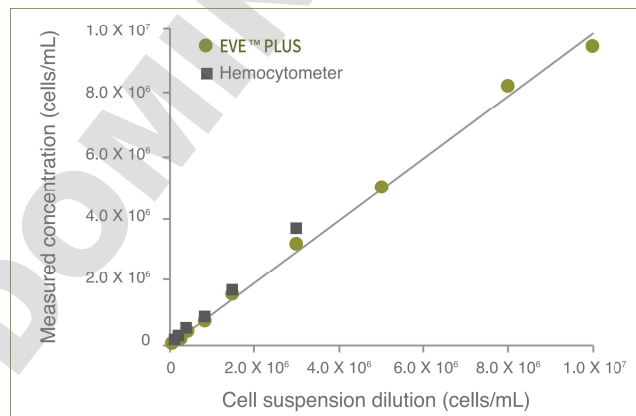


STEP 03. Get the results



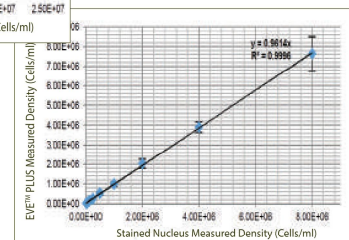
## Results of Accuracy test

Measuring from the EVE™ PLUS extends further the high concentration range than hemocytometer readings



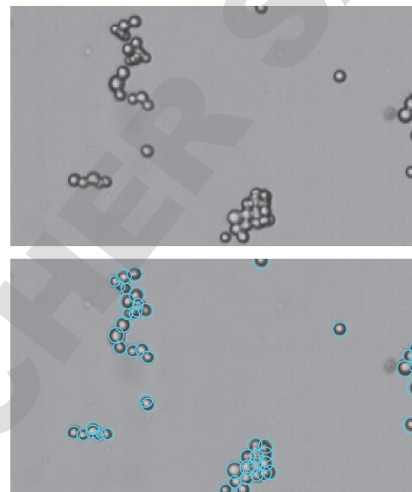
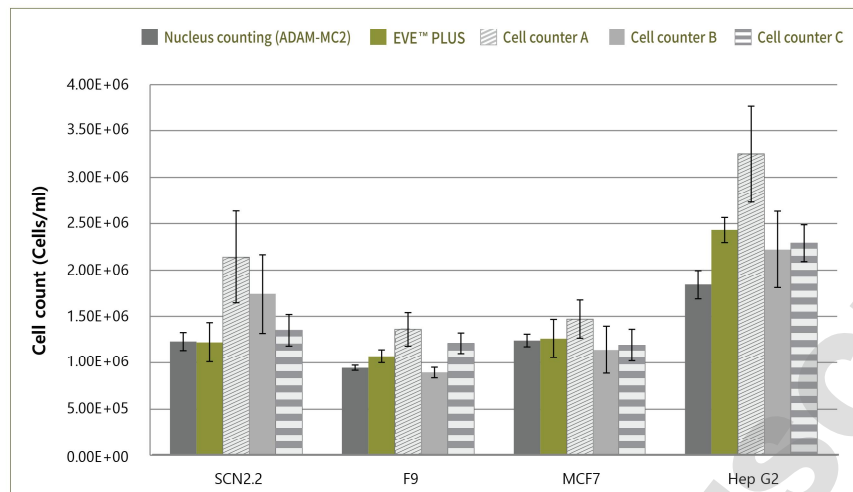
◀ Single cell

Clumped cell ▶



# The World's Fastest Automated Cell Counter

## Results of Correlation test (Clumped cell)



Clumped cells were counted with EVE™ PLUS, nucleus counting, and the automated cell counters A, B, C. NanoEnTek's ADAM-MC2 device was used for nucleus counting. It is accurate in clumped cells by counting the stained nuclei through the PI staining method. EVE™ PLUS is comparable to the nucleus counting for all cell lines with accuracy and precision. The other automated cell counters A, B, and C were shown inaccurate numbers in the clumped cell. EVE™ PLUS identifies and counts the individual cells within the clumpy cells for accurate analysis.

## Cell lines validated on EVE™ PLUS

| Cell Type | Animal | Organ           | Growth Properties |
|-----------|--------|-----------------|-------------------|
| HeLa      | Human  | Skin            | Adherent          |
| NIH-3T3   | Mouse  | Embryo          | Adherent          |
| U-2 OS    | Human  | Bone            | Adherent          |
| Jurkat    | Human  | Blood           | Suspension        |
| KG-1      | Human  | Blood           | Suspension        |
| HepG2     | Human  | Liver           | Adherent          |
| Hep3B     | Human  | Liver           | Adherent          |
| LNCaP     | Human  | Prostate        | Adherent          |
| SH-SY5Y   | Human  | Brain           | Adherent          |
| SCN2.2    | Rat    | Brain           | Adherent          |
| F9        | Mouse  | Embryo          | Adherent          |
| MCF7      | Human  | Breast          | Adherent          |
| A549      | Human  | Lung            | Adherent          |
| GH3       | Rat    | Pituitary gland | Adherent          |

## Specifications

| Item                              | Description                                   |
|-----------------------------------|---|
| Counting time                     | <1 sec (Manual focus)<br><10 sec (Auto focus) |
| Cell measurement range( cells/mL) | 1 x 10 <sup>4</sup> - 2x10 <sup>7</sup>       |
| Cell size range                   | 5 - 60 um                                     |
| Sample volume                     | 10uL  |
| Staining Method                   | Trypan blue stain                             |
| Display                           | Tablet PC                                     |
| Exporter formats                  | JPEG(Image), CSV(raw data), PDF               |
| Data export                       | USB drive, Wifi                               |
| Dimensions                        | 27.4(w) x 23.3(d) x 27.4(h) cm                |
| Weight                            | 4 kg  |
| Technical support                 | provide remote assistance                     |

## Ordering information

| Cat. No. | Description   | Contents   |
|----------|---|--|
| EVE-MC2  | EVE™ PLUS, Automated cell counter                     | Main device, Power supply, USB Wifi dongle, EVE™ Cell counting slide (50 slides) |
| EVS-050  | EVE™ Cell counting slide                              | 50 slides (100 counts)   |
| EVS-1000 | EVE™ Cell counting slide                              | 1,000 slides (2,000 counts)  |
| EVS-5000 | EVE™ Cell counting slide                              | 5,000 slides (10,000 counts)   |
| EBB-001  | Test beads Concentration (avg.) 1.0 x 10 <sup>6</sup> | 1 mL   |

# EVE™ PLUS

DOMINIQUE DUTSCHER SAS

NanoEnTek

---

1 - . 1 - ) A .  
. + K K9 H RK 6P MK MF5R K FBK 3 6# KB F H 82 + 2 P @F PPP K GAK  
. + 7K HD . , - / 4 0 . , - / / HD - . - ++. 4 0 - . - / + , / # MHM K GAK