

# WATSON®

For Research  
Made in JAPAN

# 4-Grid Cell Counter



Economical and Disposable counting chambers

|||| 4 grids

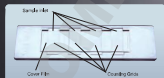
→ The plate has 4 counting cells

→ The same high resolution as glass without the high price

→ Easy to use - resin cover film

→ All Plastic design for easy and convenient disposal

→ There are 4 grid types



[www.watson.co.jp](http://www.watson.co.jp)



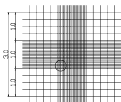
# Cell Counter Plate

## 4 grids

### Grids Pattern

#### Neubauer Improved

177-112C

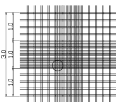


1/10mm deep, 1/400mm<sup>2</sup>/1/6sqmm



#### Buerker-turk

177-113C

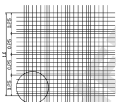


1/10mm deep, 1/400mm<sup>2</sup>/25sqmm



#### Thoma

177-112C

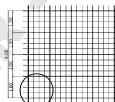


1/10mm deep, 1/400sqmm



#### Fuchs Rosenthal

177-113C



1/20mm deep, 1/400sqmm



Similar to glass microplates, the grid pattern on Watson's all plastic microplates are lined sulciform without any catches providing improved visualization.

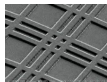
[SEM picture]



Watson (plastic grid line)



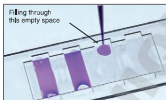
Glass (plastic grid line)



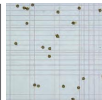
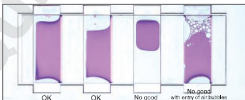
Other Watson Plastic (plastic grid line)

### Easy to operate with setting resin cover film

Easy to use with setting resin cover film and reduces declination by the operator. Made from 100% plastic for single use, and convenient disposal. Avoid unnecessary clean up. Accuracy of the grid as examined by Electron Microscope.



1. Inject sample through the sample inlet using a pipetter
2. Set in the microscope and allow to stand for a few minutes
3. Count cells
4. Calculate in accordance with counting process



Code	Type	Packaging
177-112C	4-grids Cell Counter, Improved Neubauer	10plates / box, 300x5x1, 5units/case
177-113C	4-grids Cell Counter, Buerker-Turk	10plates / box, 300x5x1, 5units/case
177-112C	4-grids Cell Counter, Thoma	10plates / box, 300x5x1, 5units/case
177-113C	4-grids Cell Counter, Fuchs Rosenthal	10plates / box, 300x5x1, 5units/case

**WATSON**  
BY KASEI KASEI CO., LTD.

Sales agency:  
**WATSON CO., LTD.**

Export Division:  
2-2-7, Minamini Nish-Ku, Kobe, 651-2241 JAPAN  
TEL 81-78-991-4489 FAX 81-78-991-4491  
Head office:  
3-37-22, Kanda-Sakumacho Chiyoda-Ku Tokyo,  
101-8355 JAPAN  
TEL 81-3-5823-8608 FAX 81-3-5823-8609  
E-mail:tr@watson.co.jp

Manufacturer:  
**FUKAE KASEI CO., LTD.**  
<http://www.watson.co.jp>

\*The specification and the price etc. of the product might change without a previous notice.