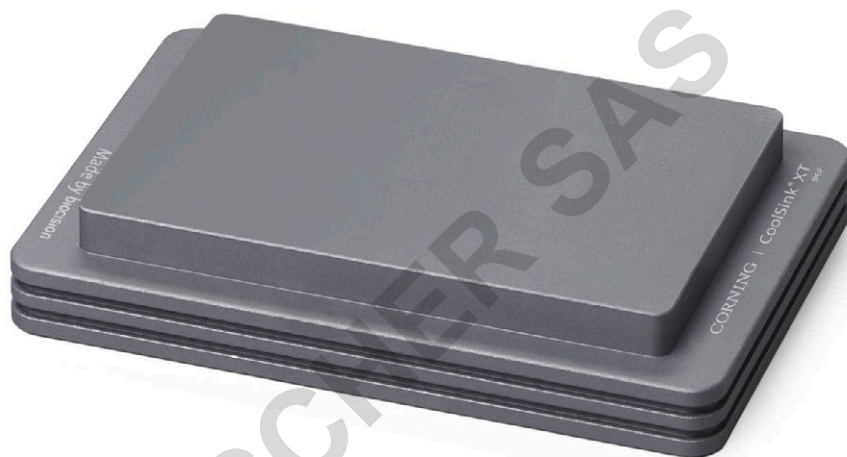


Corning® CoolSink® Modules and Accessories

CORNING

Corning CoolSink thermo-conductive plate and reservoir modules provide uniform temperature to all wells, regardless of position. When placed into a temperature source such as ice, dry ice, alcohol baths, water baths, or liquid nitrogen, the CoolSink module will rapidly adapt to that temperature (from -196°C to $>100^{\circ}\text{C}$). CoolSink modules ensure temperature uniformity when cooling, snap freezing, heating, or thawing samples.



Increased Temperature Consistency

Non-uniform Plate Cooling with Crushed Ice

Final equilibrium well temperature for a 96-well flat bottom plate in direct contact with crushed ice. Colors represent 0.5°C temperature intervals of the corresponding plate wells from 4.5°C to 7.4°C .

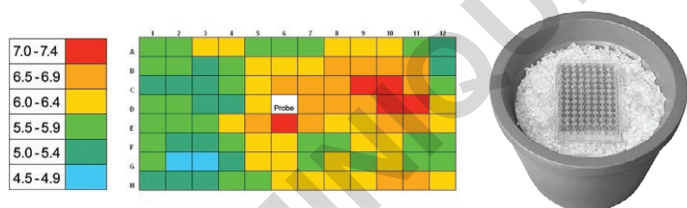


Plate directly on crushed ice, the plate does not reach 4°C in any of the wells and well-to-well temperature is uneven.

Uniform Plate Cooling with Corning CoolSink XT 96F Module

Corning CoolSink XT 96F on ice. Colors represent 0.5°C temperature intervals of the corresponding plate wells ranging from 2.5°C to 4.4°C . The white cell represents the well that was fitted with the thermocouple probe.

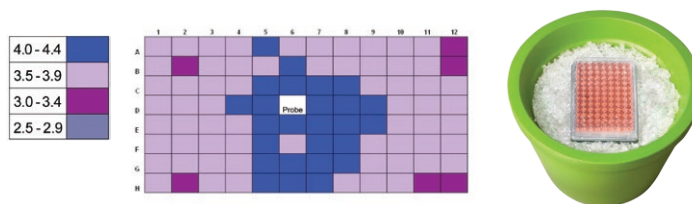





Plate placed on Corning CoolSink module and then placed on ice shows more uniform well-to-well temperature and all wells at or below 4°C . (Blue center plate wells are slightly warmer due to curvature of the underside of the plate).

Published in Biotechniques, November 2010.

Ordering Information

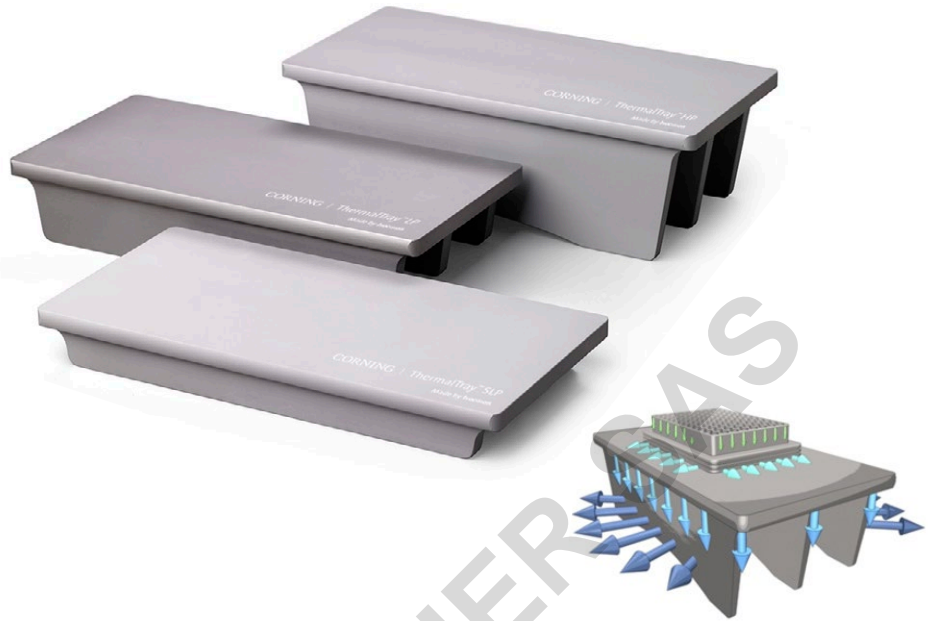
Corning CoolSink Plate and Reservoir Modules

	Cat. No.	Description	Dimensions (cm)	Qty/Cs
	432070	CoolSink XT 96F	12.8 x 8.5 x 1.7	1
	432071	CoolSink XT 96U	12.8 x 8.5 x 1.7	1
	432072	CoolSink LX55	14.6 x 6.4 x 3.5	1

Corning® ThermalTray™ Platform

Corning ThermalTray thermo-conductive platforms support Corning CoolRack® and Corning CoolSink® sample modules in liquid temperature sources such as melting ice, water baths, and liquid nitrogen. Made of the same highly conductive alloy as CoolRack and CoolSink modules, ThermalTray platforms conduct the source temperature to the CoolRack or CoolSink and, ultimately, to your samples.

The stable, sturdy design makes them ideal for processing temperature-sensitive samples in melted ice baths or liquid nitrogen. All modules may be autoclaved, high heat sterilized, or decontaminated with bleach, alcohol, or other disinfectants or lab detergents.

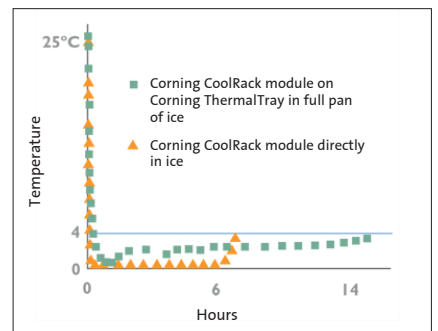


Thermo-conductive Modules Versatility and Performance



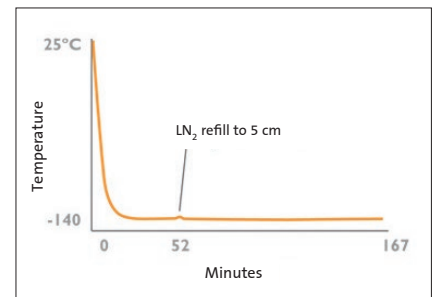
On Ice

- ▶ Adapts from ambient (25°C) to <4°C in 60 to 90 seconds*
- ▶ Samples and labels stay dry, organized
- ▶ Hours of ice cooling without direct ice contact
- ▶ Reproducible method






In Liquid Nitrogen (LN₂)

- ▶ Adapts from ambient (25°C) to approximately -150°C in approximately 12 to 14 minutes*
- ▶ Vapor barrier protects from ambient air
- ▶ Samples are upright and organized as they freeze
- ▶ No direct contact between samples and LN₂
- ▶ Reproducible method



Ordering Information

Corning ThermalTray Thermo-conductive Platforms

	Cat. No.	Dimensions (cm)	Recommended Application	Qty/Cs
	432073	28.0 x 14.0 x 3.2	Slim low profile platform recommended for liquid nitrogen	1
	432074	28.0 x 14.0 x 5.1	Low profile platform recommended for use in ice pan	1
	432075	35.0 x 22.5 x 11.4	High profile platform recommended for water baths	1








Corning® Ice Pans and Buckets

Ideal for use with ice, dry ice (-78°C), liquid nitrogen (-196°C), alcohol or saline solutions, or warm solutions (+93°C). Non-toxic, multi-purpose, recyclable ethyl-vinyl acetate (EVA) foam containers. Will not sweat, leak, or skid on bench. Available in five sizes and seven vibrant colors.



Ordering Information

Corning Ice Pans and Buckets

	Size	Dimensions (L x W x H) (cm)	Color/Cat. No.						
			Purple	Lime Green	Orange	Pink	Blue	Green	Red
	Ice pan, mini, 1L	15.9 x 15.9 x 9.5	432121	432119	432118	432120	432116	432115	432117
	Ice pan, midi, 4L	31.1 x 22.2 x 11.4	432109	432107	432106	432108	432104	432103	432105
	Ice pan with lid, midi, 4L	35.0 x 22.5 x 11.4	432114	432112	432111	432113	432110	–	–
	Ice pan, maxi, 9L	40.6 x 31.8 x 11.4	432099	432097	432096	432098	432094	432093	432095
	Ice pan with lid, maxi, 9L	44.5 x 32.5 x 11.4	432102	432101	–	–	432100	–	–
	Ice bucket with lid, round, 2.5L	Top Diameter: 24.1 Height: 12.1	432135	432133	432132	432134	432129	432130	432131
	Ice bucket with lid, round, 4L	Top Diameter: 26.0 Height: 18.4	432128	432126	432125	432127	432123	432122	432124

Corning Cryogenic Vial Grippers

Cryogenic vial grippers feature a unique design to grasp internal or external-thread cryogenic vials. Grippers enable easy sorting and moving of vials while maintaining sterility and protecting fingers from frozen vials, dry ice, and liquid nitrogen.



Cat. No.	Description
432136	Cryogenic vial grippers, multi-color (5/cs)

For more specific information on claims, visit the Certificates page at www.corning.com/lifesciences.

Warranty/Disclaimer: Unless otherwise specified, all products are for research use only. Not intended for use in diagnostic or therapeutic procedures. Corning Life Sciences makes no claims regarding the performance of these products for clinical or diagnostic applications.

For additional product or technical information, visit www.corning.com/lifesciences or call 800.492.1110. Outside the United States, call +1.978.442.2200 or contact your local Corning sales office.

CORNING

Corning Incorporated Life Sciences

836 North St.
Building 300, Suite 3401
Tewksbury, MA 01876
t 800.492.1110
t 978.442.2200
f 978.442.2476

www.corning.com/lifesciences

ASIA/PACIFIC

Australia/New Zealand
t 61 427286832

China
t 86 21 3338 4338
f 86 21 3338 4300

India
t 91 124 4604000
f 91 124 4604099

Japan
t 81 3-3586 1996
f 81 3-3586 1291

Korea
t 82 2-796-9500
f 82 2-796-9300

Singapore
t 65 6572-9740
f 65 6735-2913

Taiwan
t 886 2-2716-0338
f 886 2-2516-7500

EUROPE
CEurope@corning.com

France
t 0800 916 882
f 0800 918 636

Germany
t 0800 101 1153
f 0800 101 2427

The Netherlands
t 020 655 79 28
f 020 659 76 73

United Kingdom
t 0800 376 8660
f 0800 279 1117

All Other European Countries
t +31 (0) 206 59 60 51
f +31 (0) 206 59 76 73

LATIN AMERICA
grupoLA@corning.com

Brasil
t 55 (11) 3089-7400

Mexico
t (52-81) 8158-8400