

MS-4

A molecular screening agarose for improved resolution of DNA fragments with 500 bp or less, especially sized-primer fragments. MS-4 is a type of agarose unique to CONDA. At 3 % concentration, MS-4 Agarose gives a resolution of DNA fragments similar to gels made with polyacrylamide at concentrations of 8 %. While MS-4 may be dissolved carefully by microwaving, gels are best prepared by autoclaving.

Features

- Excellent resolution of DNA fragments lower than 500 bp, specially smaller sized-primer fragments.
- Forms a very clear, transparent gel, even at concentrations of 5% or higher.
- Efficient mechanical handling at all concentrations. The chances of gel breaking or cracking when handled are greatly minimized.

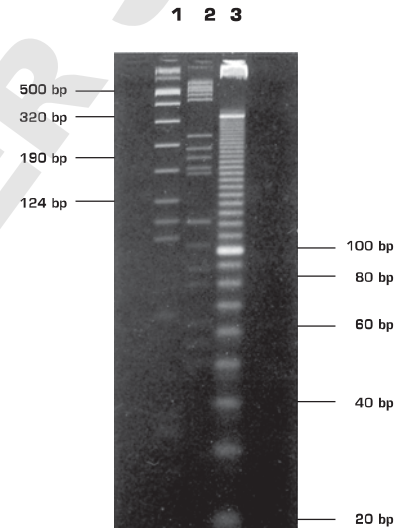
Functional Tests

- DNA resolution: bands appear sharp and finely resolved.
- DNase/RNase activity: none detected.
- Gel background: very low after Et.Br. staining.
- DNA binding: very low.

Specifications

| | MS-4 | 3 % | 5 % |
|-----------------------------------|---------|-------|--------|
| Moisture | ≤ 7% | | |
| Ash | ≤ 0.3% | | |
| EEO* | ≤ 0.12 | | |
| Sulfate | ≤ 0.11% | | |
| Clarity (NTU) | | ≤ 6 | |
| Gel Strength (g/cm ²) | | ≥ 500 | ≥ 1000 |
| Gelling Temperature (°C) | | ≤ 31 | |
| Melting Temperature (°C) | | ≤ 76 | |

*EEO (electroendosmosis)



MS-4 Agarose gel, 4% in 0.5XTBE buffer. Markers: lane 1- Molecular weight marker VIII (Roche) lane 2- Molecular weight marker V (Roche) lane 3- 10 bp ladder. Electrophoresis conditions: submarine gel, 2 hours 30 min., 4.5 V/cm in 0.5XTBE buffer.

MS-6 METAGEL

MS-6 Agarose is a high quality agarose specially formulated for molecular screening. With MS-6 Agarose CONDA brings you an agarose with an improved efficiency resolution of small DNA fragments and PCR products.

Features

- High resolution capacity close to the resolution of polyacrylamide gels.
- Improved clarity of the gel, enhancing visualization, even at high concentrations.
- High gel strength which enables an easy handling even when used at lower concentrations.

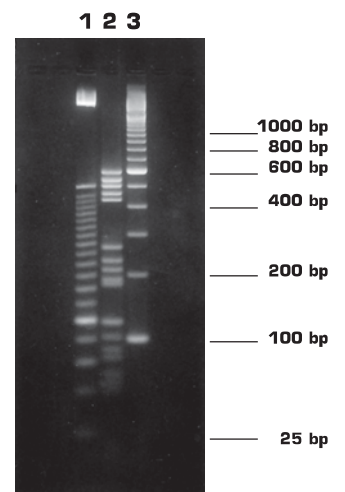
Functional Tests

- DNA resolution: bands appear sharp and finely resolved.
- DNase/RNase activity: none detected.
- Gel background: very low after Et.Br. staining.
- DNA binding: very low.

Specifications

| | MS-6 |
|--|---------|
| Moisture | ≤ 7 % |
| Ash | ≤ 0,3 % |
| EEO* | ≤ 0.12 |
| Sulfate | ≤ 0,1 % |
| Clarity (3%) (NTU) | ≤ 4 |
| Gel strength (3%) (g/cm ²) | ≥ 800 |
| Gelling Temperature (3%) (°C) | ≤ 35 |
| Melting Temperature (3%) (°C) | ≤ 75 |

*EEO (electroendosmosis)



MS-6 3% Agarose gel in 1XTAE buffer. Markers: lane 1 - 25 bp ladder lane 2 - Molecular weight marker V. lane 3 - 100 bp ladder. Electrophoresis conditions: submarine gel, 2h 30 min, 4.5 V/cm in 1XTAE buffer.