

● CHROMagar™ B.cereus



For detection and enumeration
of *Bacillus cereus* group

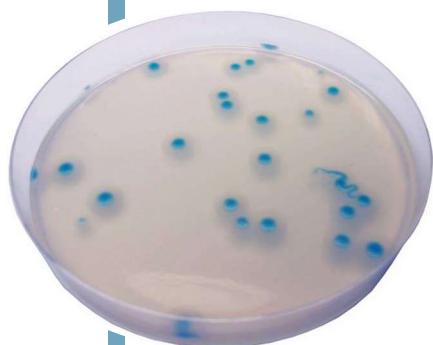


Plate Reading

- *Bacillus cereus* group
→ blue with white halo
- Other *Bacillus*
→ blue, colourless or inhibited
- Gram (-) bacteria
→ inhibited
- Yeast and moulds
→ inhibited

For detection and enumeration of *Bacillus cereus* group

Background

Bacillus cereus is a spore-forming bacterium that can be frequently isolated from soil and some food and which produces toxins. These toxins can cause two types of illness: one type characterized by diarrhea (long incubation, 8-16 hours) and the other by nausea and vomiting (short incubation, 1-6 hours).

The short-incubation form is most often associated with rice dishes that have been cooked and then held at warm temperatures for several hours.

Long-incubation *B. cereus* food poisoning is frequently associated with meat or vegetable-containing foods, after cooking. The bacterium has been isolated from dried beans and cereals, and from dried foods such as spices, seasoning mixes and potatoes.

The short-incubation or emetic form of the disease is diagnosed by the isolation of *B. cereus* from the incriminated food. The long-incubation or diarrheal form is diagnosed by isolation of the organism from stool and food.

Medium Performance

1 EASY READING AFTER ONLY 24 H

24 h Incubation at 30 °C.

The intense blue colored colonies on a translucent agar facilitates the reading compared to Mannitol based agar which displays red colonies on pink agar.

2 SIMPLICITY

Contrary to MYP or Mossel agar, there is no need to add the Egg yolk emulsion.

3 HIGHLY SENSITIVE & SPECIFIC FOR CEREUS GROUP

compared to MYP or Mossel agar.

The classical MYP or Mossel agar rely on the inability of *B. cereus* to use the mannitol, which renders the plate reading difficult in the presence of abundant flora. CHROMagar™ B.cereus, due to the chromogenic technology, overcomes this difficulty.

100 % Sensitivity / 100 % Specificity *

*Specificity and sensitivity from scientific study: Adria Normandie Study, 2012

4 BETTER SELECTIVITY & RECOVERY COMPARED TO CLASSICAL MEDIA

compared to classical medium agar.

5 LONGER PREPARED PLATE SHELF LIFE

compared to MYP and Mossel agar which only have a 5 days shelf life.

Medium Description

Powder Base CHROMagar™ B.cereus base	Total	33.3 g/L
	Agar	15.0
	Peptone and yeast extract	8.0
	NaCl	10.0
	Chromogenic mix	0.3
	Storage at 15/30 °C - pH: 6.8 +/-0.2	
CHROMagar™ B.cereus Supplement (included in the pack)	Shelf Life	> 12 months
	Specific Powder supplement	3.0 g/L
	Storage at 2/8 °C	
	Aspect: Powder Form	
	Shelf Life	> 18 months

Usual Samples	Food and environmental samples
Procedure	Direct Streaking or spreading technique. Incubation 18-24 h at 30 °C Aerobic conditions.

Scientific Publications on this product: available on www.CHROMagar.com
Please read carefully the instructions for use (IFU document) available on www.CHROMagar.com

Order References

Please use these product references when contacting your local distributor:

5000 mL pack BC732

(included in this reference: powder base BC732(B) + supplement BC732(S))

Manufacturer: CHROMagar, 29 avenue George Sand,

93210 La Plaine Saint-Denis - France

Email: CHROMagar@CHROMagar.com

Website: www.CHROMagar.com

Find your nearest distributor on

www.CHROMagar.com/contact