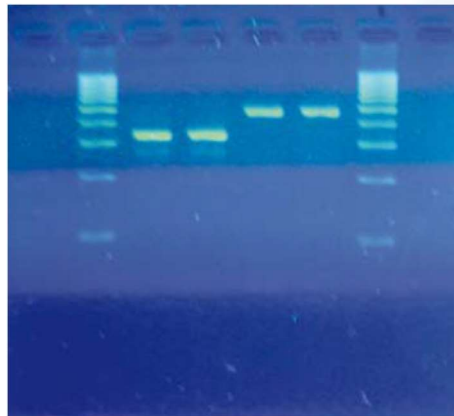


Clearline Emeraldye DNA Stain

- Dye for the detection of nucleic acids in gels agarose
- Alternative dye with ethidium bromide (BET)
- Excitation wavelengths: 490 nm (main), 270 and 290 nm (secondary)
- Emission wavelength: 530 nm (Green Fluorescence)
- The Emeraldye Clearline can be used with a UV table standard or other LED instrument
- No mutagenic effect (according to Ames test)
- No toxicity (LD50 = 10,000 mg/kg)
- Volume : 1ml
- Storage condition : Room temperature or +4°C at the darkness

**Units :**

1 ml