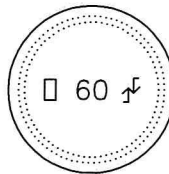
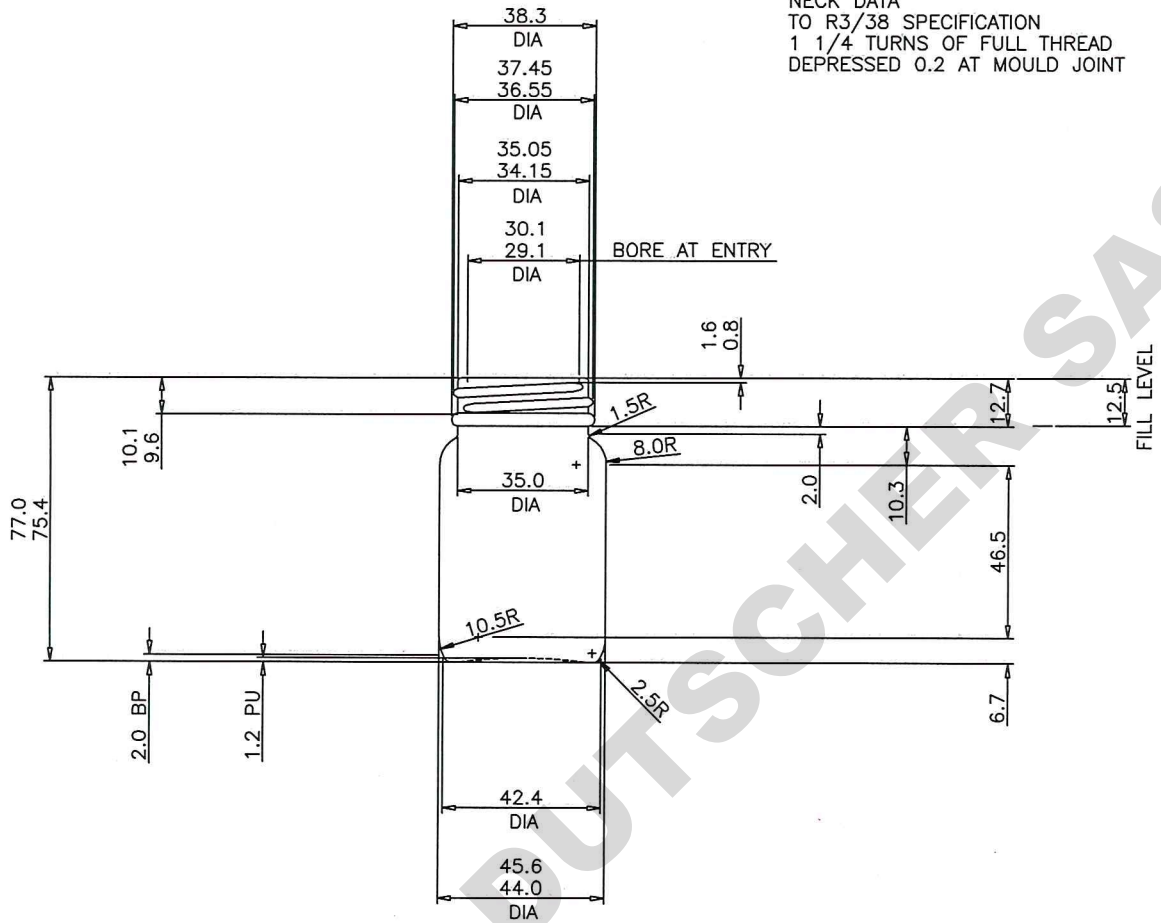


NECK DATA
TO R3/38 SPECIFICATION
1 1/4 TURNS OF FULL THREAD
DEPRESSED 0.2 AT MOULD JOINT



VIEW ON BASE
SHOWING EMBOSSED MARKING
STANDING AREA EMBOSSED
WITH KNURLING

SCALE	1:1 (A2)	DESIGNER	DA	60ml Powder – R3/38	
DATE	14/12/00	CHECKED	AH		
NECK FINISH	R3/38	REV.N A) NECK SPECIFICATION MODIFIED TO SUIT B.S. 1918		DA	14/08/89
APPROX. WEIGHT	78	g	NECK REF. No. 2A8/A1 JOB No. 2986 DRAWING No. B3140A		
FILL POINT	12.5	down			
CAPACITY TO FILL POINT	68.0	ml			
CAPACITY TOLERANCE (BULK) ±	2.0	ml			
CAPACITY BRIMFULL	75.5	ml	DIMENSIONS IN MILLIMETRES		
Note: Filling point measured from top centrally inside neck unless otherwise specified.		Untoleranced dimensions are for mould making guidance only and should be regarded as approximate.			