



MAUSER Holding GmbH
Schildgesstraße 71-163
50321 Brühl, Germany
Phone: + 49 (0) 2232 78-1000
Fax: + 49 (0) 2232-1202

info@mausergroup.com
www.mausergroup.com

MAUSER Benelux B.V.
Souvereinstraat 1
P.O. Box 235
4900 AE Oosterhout, The Netherlands
Phone: + 31 (0)162 483 700
Fax: +31 (0)162 246 746

sales.nl@mausergroep.com

REGIONAL HEADQUARTERS

SBU Asia
MAUSER Singapore Pte Ltd
51 Benoi Road Blk 1
Liang Huat Industrial Complex
629908 Singapore
Phone +65 (0) 68969321
Fax: +65 (0) 68969327

SBU Europe
MAUSER-Werke GmbH
Schildgesstraße 71-163
50321 Brühl Germany
Phone: + 49 (0) 2232 78-1000
Fax: + 49 (0) 2232-1202

SBU North America
MAUSER USA, LLC
35-C Cotters Lane
East Brunswick, NJ 08816, USA
Phone: +1 (0) 732 353-7100
Fax: +1 (0) 732 651-9777

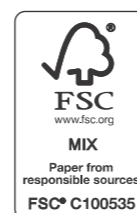
SBU South America
MAUSER do Brasil Embalagens Industriais S.A
Rua Doutor Albuquerque Lins, nº 503
Cjs 11 e 13 - Santa Cecília
CEP 01230-001 São Paulo / SP

NCG
National Container Group LCC
West 38th Street 3620
60632 Chicago, USA
Phone: +1 (0) 773 847-7575
Fax: +1 (0) 773 847-7557

pickup@nationalcontainer.com
www.nationalcontainer.com

NCG Europe GmbH
Schildgesstraße 71-163
50321 Brühl, Germany
Phone: + 49 (0) 2232 78-1880
Fax: + 49 (0) 2232-1888

pickup@ncg-europe.com
www.ncg-europe.com



MAUSER® WIVA
Container System
New Medical Waste
Container Generation

Especially designed for healthcare risk waste – for a new level of safety and efficiency!



A superior solution for institutions in the healthcare sector

MAUSER's range of WIVA medical waste containers is providing the preferred option for safe storage and transport of healthcare risk waste to many hospitals, laboratories and health centers throughout Europe.

With its unique design, it has been setting the standard for many years and we value the input from both customers and end-users.

This input has led to the development of a new range of WIVA medical waste containers - the WIVA Container system. MAUSER has combined within the new design its unique, simple and robust closing systems with further innovations improving user friendliness and comfort.



30L

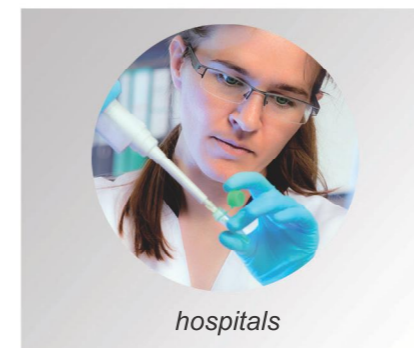


50L



60L

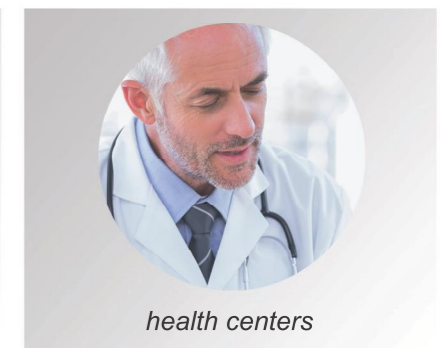
The new medical waste container generation



hospitals



laboratories



health centers



WIVA Container System, a success story rewritten

This new design has found the optimum balance between Product Safety, Easy Handling and Sustainability.

This balance leads to:

- ▶ Better handling
- ▶ Easier closing
- ▶ Improved space utilisation
- ▶ Failure-proof locking system
- ▶ Increased transport efficiency
- ▶ Improved safety in both storage and transportation



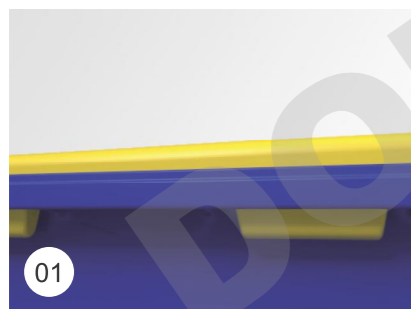
product safety



easy handling



sustainability



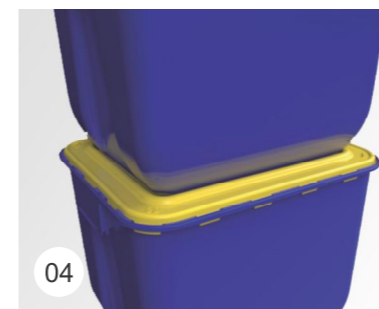
01 Proven closure system



02 New rim and hook design



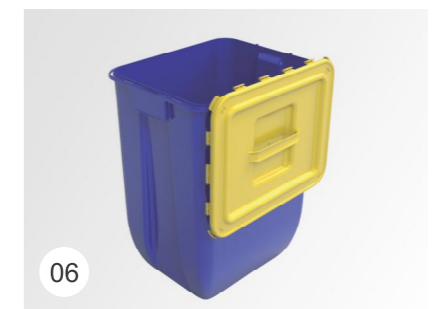
03 Additional hooks on corners



04 Stable stacking



05 Optimised wall thickness



06 Possibility to attach lid to container



One System, endless opportunities

The majority of medical waste (99%) is classified as UN3291. For this waste stream, the WIVA medical waste containers are the perfect solution. To make life easier for staff dealing with medical waste, the WIVA medical waste container system also provides other solutions.

One of these is the pedal bin frame, made from stainless steel - a successful accessory, used in many hospitals, helping staff to dispose their medical waste in an even more hygienic and efficient way.

The WIVA medical waste containers are available in three sizes, 30, 50 and 60 liter. Two lids are available, a grip lid and a click (porthole) lid. The containers and lids are available in different colors and with different types of labels, either standard or custom-made.

MAUSER also provides solutions for Category A waste – the WIVA Sterilid. This is used for infectious material, hazardous for either humans (UN2814) or animals (UN2900) – and helps users autoclave their waste in an efficient and user friendly way.



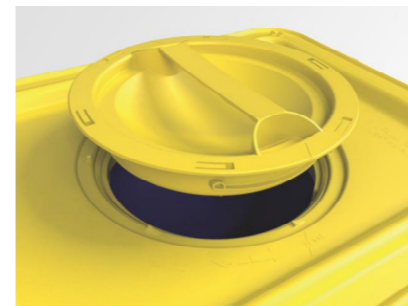
Standard colors
(other colors available)



Pedal bin frame



Grip lid



Click lid



Visible locking



Sterilid