

# BIORCELL 3D

Ethical, Reliable, Reproducible and Universal biotechnologies for Health

# OptiPASS

**OPTIPASS®**

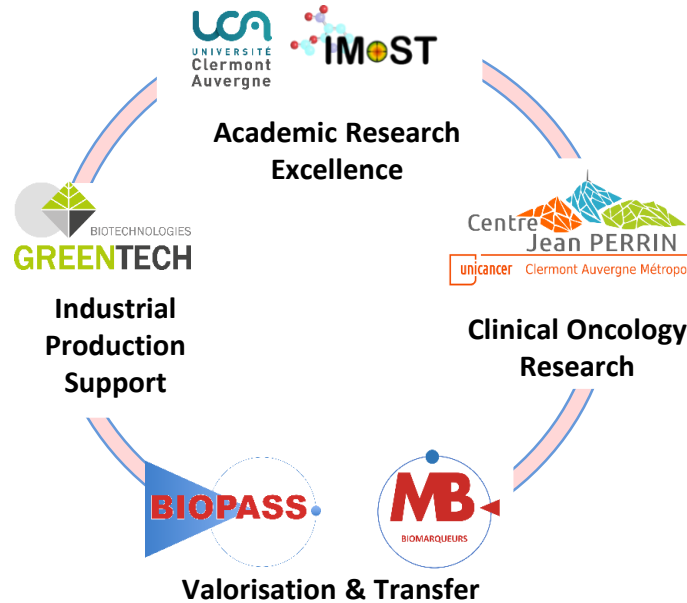
*Synthetic and chemically defined culture media*



## ABOUT US

BIORCELL 3D is a spin-off of Clermont Auvergne University, regrouping 5 partners with complementary skills

## BIORCELL 3D



## OUR EXPERTISE

The development of **Ethical, Reliable, Reproducible and Universal Biotechnologies for Health**



**Serum-complemented media : Variability, infectious risk & ethical considerations**

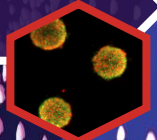
**OUR SOLUTION OF CULTURE MEDIA:** animal-free formulation, chemically defined, complete and ready-to-use for a large panel of cell types.

**100% CONTROLLED AND REPRODUCIBLE**

**2D culture of a large panel of tumor cells (OPTI-04)**



**3D culture of a large panel of artificial tumors® (OPTI-03)**



**Short-term preservation without freezing (OPTI-05)**

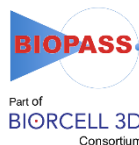


*The OptiPASS® media are distributed by*

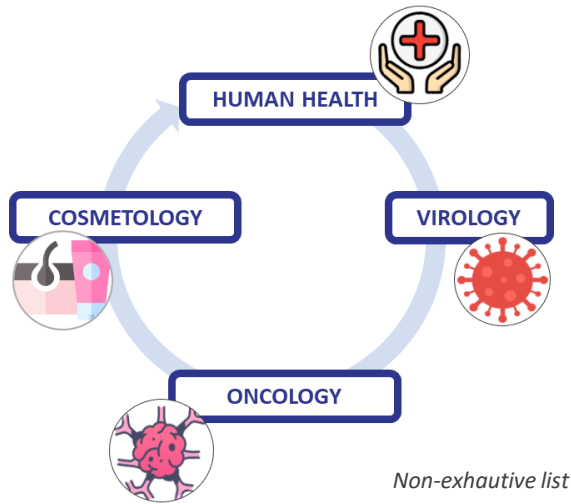
**Dutscher**  
CONSOMMABLES ET MATÉRIELS DE LABORATOIRE



Applicable version : May 2022



# Ready to use culture media for Biology Applications :



**Applicable for cell culture, drug screening, sample preservation, bioproduction ...**



Production exclusively with raw material of pharmacopeia grade



The serum is replaced by other synthetic compounds (**without animal origin**)



**Regulated Qualification Methods:** use of a reference cell line, morphological analysis, proliferation and metabolic activity

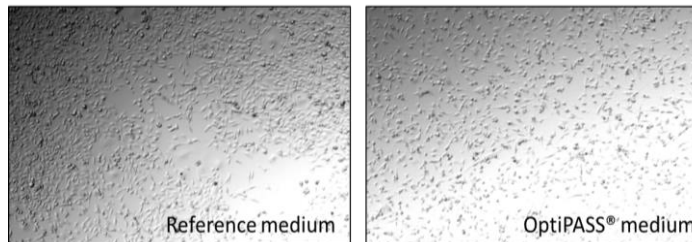
*“Ethical, Reliable, Reproducible and **Universal** biotechnologies for Health”*

| Cell Lines | OptiPASS®   |             |                         |
|------------|-------------|-------------|-------------------------|
|            | 2D          | 3D          |                         |
| MDA MB 231 | ✓           | ✓           | Breast                  |
| SUM 1315   | ✓           | ✓           |                         |
| MCF 7      | ✓           | ✓           |                         |
| HCC 1937   | In progress | ✓           | Healthy monkey (kidney) |
| CAL 51     | ✓           | In progress |                         |
| BT 474     | In progress | ✓           | Prostate                |
| VERO 76    | ✓           | ✓           |                         |
| PC3        | ✓           | ✓           | Lung                    |
| NCI H1975  | ✓           | ✓           |                         |
| SKOV3      | In progress | ✓           | Ovary                   |
| OVCAR 3    | In progress | ✓           |                         |
| A 375      | ✓           | ✓           | Melanoma                |
| TOTAL      | 8           | 11          |                         |

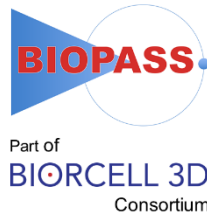
**Our biobank is always in progression. Do not hesitate to contact us for more details on other lines not mentioned**

## 2D CULTURE :

No significant difference in morphology and cellular growth (example with MDA-MB-231 cell line)



Find all the details of our cell lines in our website: <https://biorcell-3d.com/>



## CONTACT US

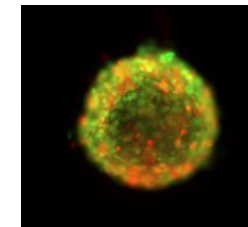
BIORCELL 3D  
IUT Clermont Auvergne  
5 avenue Blaise Pascal  
63170 Aubière - FRANCE

✉ contact@biorcell-3d.com

☎ +33 4 73 17 70 77

🌐 [biorcell-3d.com](http://biorcell-3d.com)

## OTHER BIORCELL3D PRODUCTS



**Reproducible 3D cell culture models**



**Fluorescent probes for the detection, localisation and quantification of the P-gp**