

# BIORCELL 3D

Ethical, Reliable, Reproducible and Universal biotechnologies for Health

# OptiPASS

**OPTIPASS®**

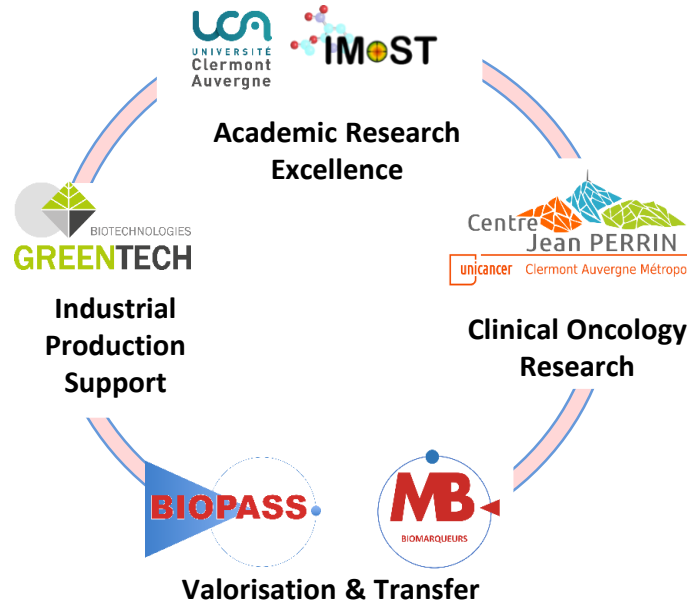
*Synthetic and chemically defined culture media*



## ABOUT US

BIORCELL 3D is a spin-off of Clermont Auvergne University, regrouping 5 partners with complementary skills

## BIORCELL 3D



## OUR EXPERTISE

The development of **Ethical, Reliable, Reproducible and Universal Biotechnologies for Health**



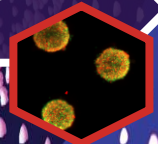
**Serum-complemented media : Variability, infectious risk & ethical considerations**

**OUR SOLUTION OF CULTURE MEDIA:** animal-free formulation, chemically defined, complete and ready-to-use for a large panel of cell types.  
**100% CONTROLLED AND REPRODUCIBLE**

**2D culture of a large panel of tumor cells (OPTI-04)**



**3D culture of a large panel of artificial tumors® (OPTI-03)**

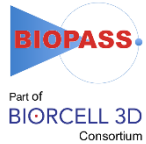


**Short-term preservation without freezing (OPTI-05)**



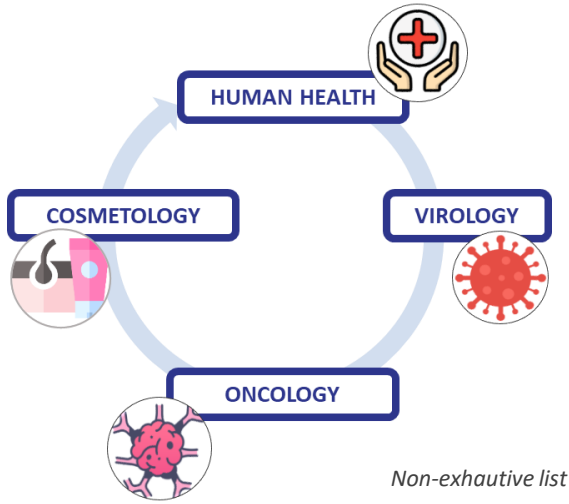
*The OptiPASS® media are distributed by*

**Dutscher**  
CONSOMMABLES ET MATÉRIELS DE LABORATOIRE



Applicable version : May 2022

# Ready to use culture media for Biology Applications :



**Applicable for cell culture, drug screening, sample preservation, bioproduction ...**



Production exclusively with raw material of pharmacopeia grade



The serum is replaced by other synthetic compounds (**without animal origin**)



**Regulated Qualification Methods:** use of a reference cell line, morphological analysis, proliferation and metabolic activity

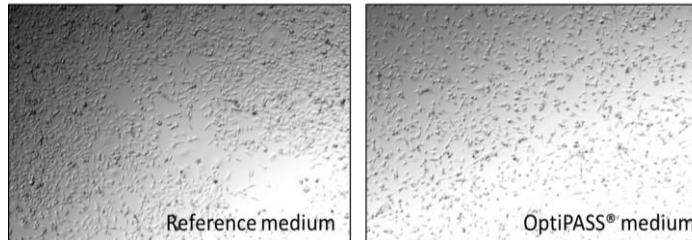
*“Ethical, Reliable, Reproducible and **Universal** biotechnologies for Health”*

Cell Lines	OptiPASS®		
	2D	3D	
MDA MB 231	✓	✓	Breast
SUM 1315	✓	✓	
MCF 7	✓	✓	
HCC 1937	In progress	✓	Healthy monkey (kidney)
CAL 51	✓	In progress	
BT 474	In progress	✓	Prostate
VERO 76	✓	✓	
PC3	✓	✓	Lung
NCI H1975	✓	✓	
SKOV3	In progress	✓	Ovary
OVCAR 3	In progress	✓	
A 375	✓	✓	Melanoma
TOTAL	8	11	

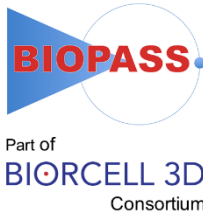
**Our biobank is always in progression. Do not hesitate to contact us for more details on other lines not mentioned**

## 2D CULTURE :

No significant difference in morphology and cellular growth (example with MDA-MB-231 cell line)



Find all the details of our cell lines in our website: <https://biorcell-3d.com/>



## CONTACT US

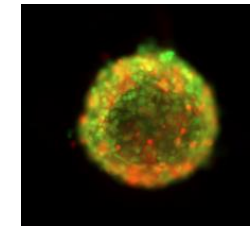
BIORCELL 3D  
IUT Clermont Auvergne  
5 avenue Blaise Pascal  
63170 Aubière - FRANCE

✉ contact@biorcell-3d.com

☎ +33 4 73 17 70 77

🌐 [www.biorcell-3d.com](http://www.biorcell-3d.com)

## OTHER BIORCELL3D PRODUCTS



**Reproducible 3D cell culture models**



**Fluorescent probes for the detection, localisation and quantification of the P-gp**