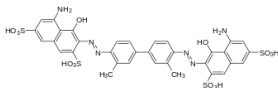


## Trypan Blue Stain, 0.4%

T13001



## Storage

Room temperature

## Product Description

|                   |   |
|-------------------|---|
| Molecular formula | C <sub>34</sub> H <sub>28</sub> N <sub>6</sub> O <sub>14</sub> S <sub>4</sub> |
| Molecular weight  | 872.88 g/mol  |
| Appearance        | Dark blue liquid  |
| Cell permeability | Membrane impermeant   |

Trypan Blue Stain is a vital dye used to assess cell viability. Viable cells have intact cell membranes and are not stained, remaining colorless. Nonviable cells are stained blue. Trypan Blue Stain is used with the LUNA™ family of cell counters for brightfield cell counting.

## Directions for Use

1. Mix:
  - 10 µL Trypan Blue Stain, 0.4%
  - 10 µL cell sample
2. Count the sample with a compatible LUNA™.

## Disclaimer

This product is for research use only. Please consult the material safety data sheet for information regarding hazards and safe handling practices.

Additional information is available on our website at [www.logosbio.com](http://www.logosbio.com). © Logos Biosystems 2018. All rights reserved.



## HEADQUARTERS

FL 3  
28 Simindaero 327beon-gil, Dongan-gu  
Anyang-si, Gyeonggi-do 14055  
South Korea

Tel: +82 (31) 478-4185

## USA

7700 Little River Turnpike STE 207  
Annandale, VA 22003  
USA

Tel: +1 (703) 622-4660, +1 (703) 942-8867

## EUROPE

1 allée Lavoisier 59650 Villeneuve d'Ascq  
France

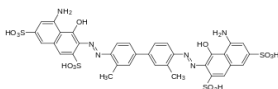
Tel: +33 (0)3 74 09 44 35

[www.logosbio.com](http://www.logosbio.com)

LBSM-RD-PI-TB-001 Rev.2

## Trypan Blue Stain, 0.4%

T13001



## Storage

Room temperature

## Product Description

|                   |   |
|-------------------|---|
| Molecular formula | C <sub>34</sub> H <sub>28</sub> N <sub>6</sub> O <sub>14</sub> S <sub>4</sub> |
| Molecular weight  | 872.88 g/mol  |
| Appearance        | Dark blue liquid  |
| Cell permeability | Membrane impermeant   |

Trypan Blue Stain is a vital dye used to assess cell viability. Viable cells have intact cell membranes and are not stained, remaining colorless. Nonviable cells are stained blue. Trypan Blue Stain is used with the LUNA™ family of cell counters for brightfield cell counting.

## Directions for Use

1. Mix:
  - 10 µL Trypan Blue Stain, 0.4%
  - 10 µL cell sample
2. Count the sample with a compatible LUNA™.

## Disclaimer

This product is for research use only. Please consult the material safety data sheet for information regarding hazards and safe handling practices.

Additional information is available on our website at [www.logosbio.com](http://www.logosbio.com). © Logos Biosystems 2018. All rights reserved.



## HEADQUARTERS

FL 3  
28 Simindaero 327beon-gil, Dongan-gu  
Anyang-si, Gyeonggi-do 14055  
South Korea

Tel: +82 (31) 478-4185

## USA

7700 Little River Turnpike STE 207  
Annandale, VA 22003  
USA

Tel: +1 (703) 622-4660, +1 (703) 942-8867

## EUROPE

1 allée Lavoisier 59650 Villeneuve d'Ascq  
France

Tel: +33 (0)3 74 09 44 35

[www.logosbio.com](http://www.logosbio.com)

LBSM-RD-PI-TB-001 Rev.2