

### Order Number

75400-714

Capacity

0.52 cu.ft. (14.8 liters)

Interior Dimensions (W x D x H)

12.5" x 6.1" x 6.0"  
318 x 154 x 152 mm

Exterior Dimensions (W x D x H)

30.4" x 24.2" x 12.2"  
772 x 615 x 310 mm

Dry Weight\*

80.8 lb (36.7 kg)

Net Weight\*\*

125.6 lb (57.0 kg)

Shipping Weight

167.0 lb (76.0 kg)

Interior Construction

Aluminum

Exterior Construction

300 Stainless Steel/CR

Wall Clearance, Each Side

4" (102 mm)

Wall Clearance, Rear

4" (102 mm)

Tank Size

14 liters

Tank Fill Capacity

10 liters

### Electrical

Electrical Supply /Hz, AC, 1Ø

50/60 Hz,  
100-240 AC,  
550 Watts

Plug Supplied

NEMA5-15P, EU1-16P

### Temperature Specifications

Temperature Range

2°C to 70°C

Temperature Uniformity

±0.5°C at 4°C  
±0.5°C at 37°C  
±1.3°C at 70°C

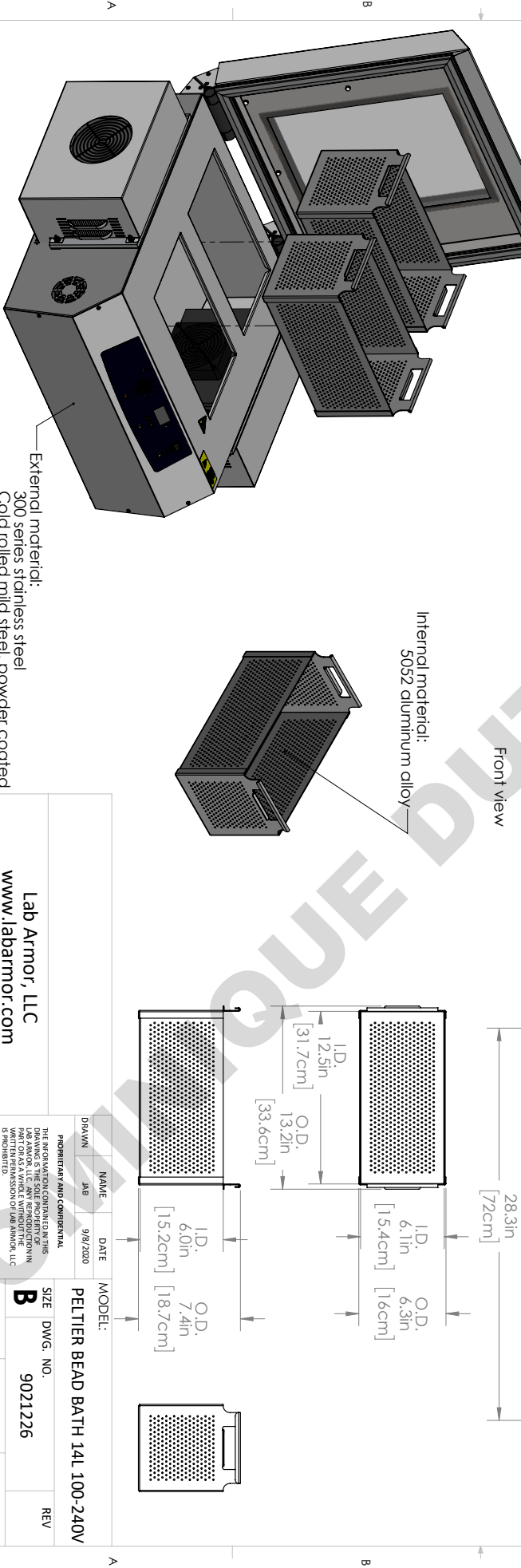
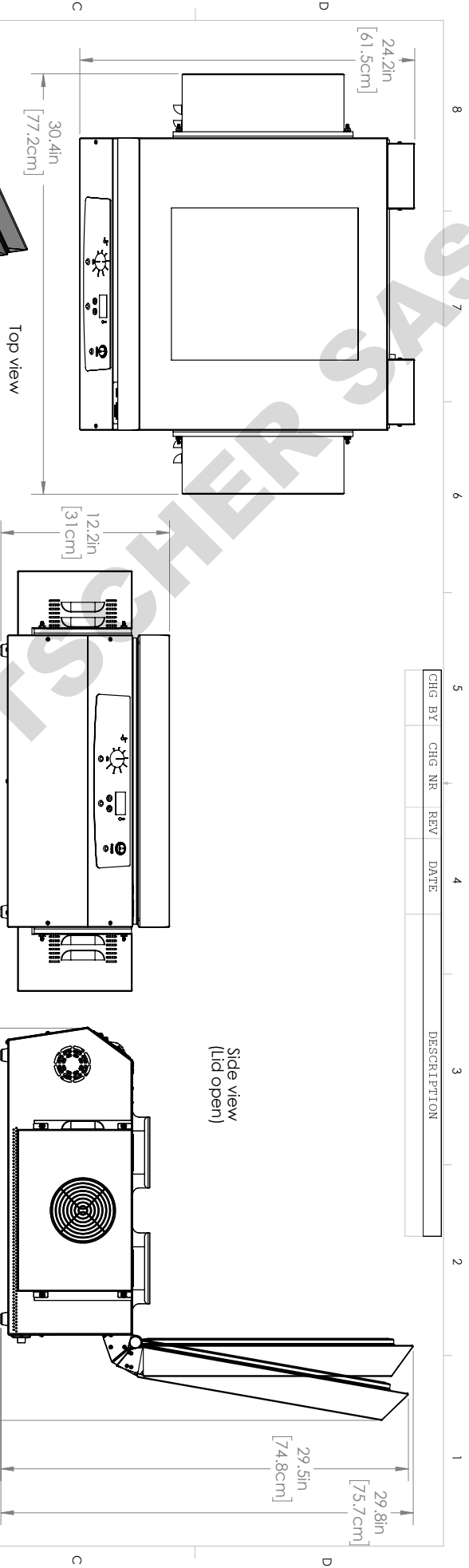
Temperature Stability - At 37°C

0.1

\*Bath empty with no beads loaded.  
\*\*Bath filled with beads.

*We reserve the right to alter specifications at any time*

CHG BY	CHG NR	REV	DATE	DESCRIPTION



Lab Armor, LLC <a href="http://www.labarmor.com">www.labarmor.com</a>		MODEL: <b>PELTIER BEAD BATH 14L 100-240V</b>	
DRAWN JAB	NAME JAB	DATE 9/8/200	REV 9021226
PROPRIETARY AND CONFIDENTIAL THIS DRAWING IS THE SOLE PROPERTY OF LAB ARMOR, LLC. IT IS TO BE USED ONLY AS A PART OF THE PRODUCT FOR WHICH IT WAS DESIGNED. WRITTEN PERMISSION OF LAB ARMOR, LLC IS REQUIRED.		SCALE: 1:7	SHEET 1 OF 1