

Order Number

75400-707

Capacity

0.26 cu.ft. (7.4 liters)

Interior Dimensions (W x D x H)

12.5" x 6.1" x 6.0"
318 x 154 x 152 mm

Exterior Dimensions (W x D x H)

16.1" x 22.1" x 12.1"
408 x 562 x 308 mm

Dry Weight*

46.6 lb (21.2 kg)

Net Weight**

69.0 lb (31.3 kg)

Shipping Weight

96.0 lb (44.0 kg)

Interior Construction

Aluminum

Exterior Construction

300 Stainless Steel/CR

Wall Clearance, Each Side

4" (102 mm)

Wall Clearance, Rear

4" (102 mm)

Tank Size

7 liters

Tank Fill Capacity

5 liters

Electrical

Electrical Supply /Hz, AC, 1Ø

50/60 Hz,
100-240 AC,
275 Watts

Plug Supplied

NEMA 5-15P, EU1-16P

Temperature Specifications

Temperature Range

2°C to 70°C

Temperature Uniformity

±0.4°C at 4°C
±0.5°C at 37°C
±1.5°C at 70°C

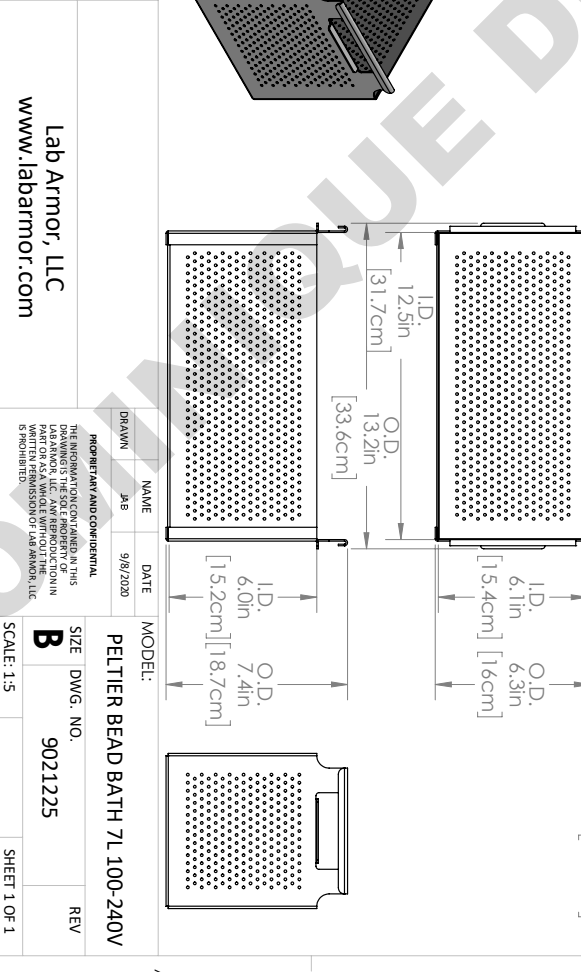
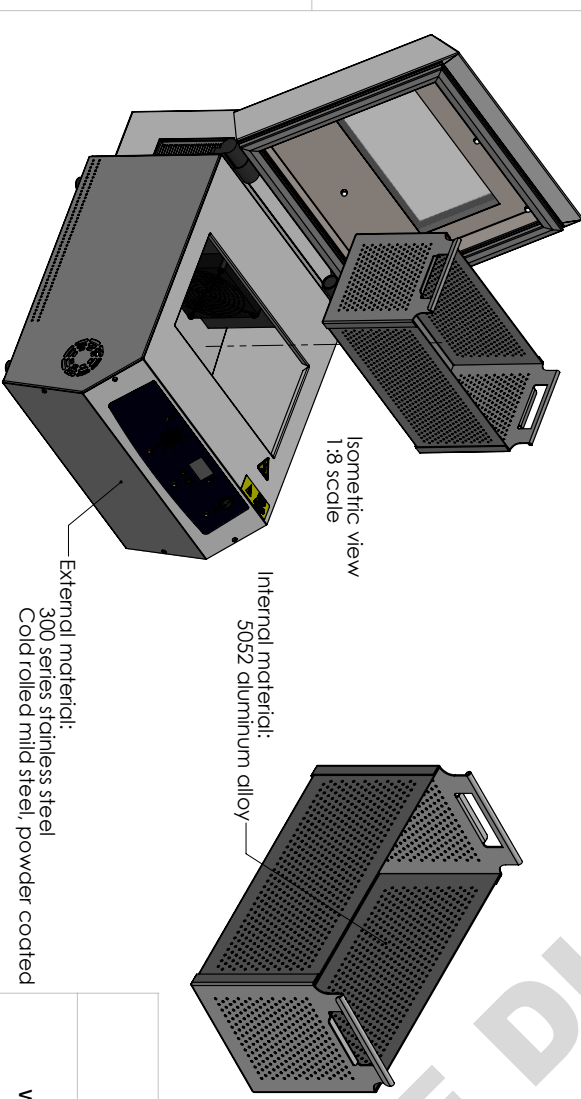
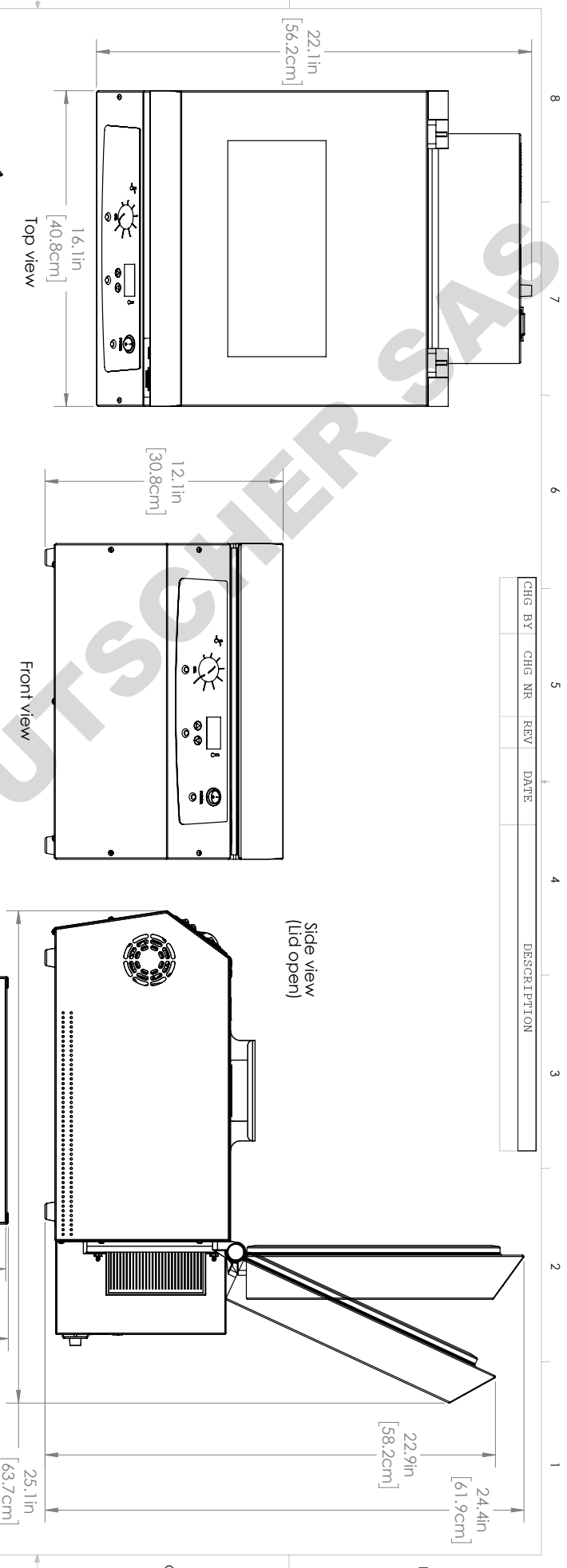
Temperature Stability - At 37°C

0.1

*Bath empty with no beads loaded.
**Bath filled with beads.

We reserve the right to alter specifications at any time

CHG. BY	CHG. NR.	REV.	DATE	DESCRIPTION



Lab Armor, LLC www.labarmor.com		MODEL: PELTIER BEAD BATH 7L 100-240V	
PROPRIETARY AND CONFIDENTIAL <small>THE INFORMATION CONTAINED IN THIS DRAWING IS THE SOLE PROPERTY OF LAB ARMOR, LLC. IT IS TO BE USED FOR THE PART OR PARTS IDENTIFIED HEREIN. PERMISSION OF LAB ARMOR, LLC IS REQUIRED FOR REPRODUCTION OR TRANSMISSION.</small>	DATE: 9/8/2020	SIZE: B	DWG. NO.: 9021225
DRAWN: JAB	NAME: JAB	SCALE: 1:5	REV: