



NIPPON Genetics EUROPE
INNOVATION FOR YOU



Real-Time PCR System

FastGene® qFYR Real-Time PCR System

User Manual

Version 1.0

Copyright & Disclaimer, NIPPON Genetics EUROPE GmbH

The copyright of this manual is owned by NIPPON Genetics EUROPE GmbH. No individual or organization shall, in any form, copy, edit, publish, or translate the contents of this manual (including but not limited to words, trademarks, logos, keystroke icons, lists, images, data, etc.) into other languages without the authorization or written permission of the company. In violation of the above statement, the Company will investigate its relevant legal liability.

NIPPON Genetics EUROPE GmbH strives to ensure that the contents of this manual are correct when printed, but the company still has the right to modify the contents of this manual at any time without prior notice. The contents of the manual shall be subject to the changed contents.

User manual version number:	V1.0
User manual revision time:	September 2022
Type of instrument applicable:	FastGene® qFYZ Real-Time PCR System
Software Release Number:	V 1.0
Instrument production date:	See production label

Introduction

Welcome to the FastGene® qFYR Real-Time PCR System. Please read this instruction carefully so that you can use this instrument correctly. After careful reading, please keep it for future inquiry when necessary.

Product information

Description:	Real-Time PCR System
Product model:	FastGene® qFYR Realtime PCR System
Software Name:	FastGene®qFYR Analysis Studio
Software Release Number:	V1
Product Size:	350 x 520 x 370 mm (length x wide x height)
Net Weight:	25 Kg

Enterprise information

Statement of intended use:

This product is used to run real-time fluorescence PCR experiments (Real-time PCR) and to analyze the experimental data. The instrument is operated in a laboratory with the corresponding reagents, to carry out rapid and accurate quantitative and qualitative detection of target nucleic acids sequences from human and animal samples (such as blood, oral swabs, nasopharyngeal swabs, body fluids, etc.) or other analytes, or to conduct melting curves, genotype analysis, etc.

Special statement:

Before installing and using this instrument for the first time, please read the instructions in this manual carefully. Please take into consideration the possible scope of maloperation or non-recommended usage and pay special attention to the possible consequences.

Intended Usage:

This product is for **Research-Use-Only** (RUO).

User requirements:

This product must be operated by trained professionals, who have studied this user manual.

DOMINIQUE DUTSCHER SAS

Table of Contents











Table of Contents	6
Chapter 1 Security and considerations	10
1.1 Security Symbols and Markings	10
1.2 General Instrument Safety and Precautions	10
1.3 Personal Safety and Precautions	11
1.4 Electrical Safety and Precautions	11
1.5 Environmental Safety and Precautions	12
1.6 Biosafety and Precautions	13
1.7 Electromagnetic Compatibility (EMC) Standards	13
Chapter 2 Product Overview	15
2.1 Scope of application	15
2.1.1 Intended Use	15
2.1.2 Product Intended Use Environment	15
2.2 Application Areas	15
2.3 Basic Principles	16
2.4 Main Functions	16
2.5 Product Composition	16
2.6 Product Structure	17
2.7 Instrument Parameters and Characteristics	19
2.7.1 Physical Specifications	19
2.7.2 Instrument Technical Parameters	20
2.7.3 Software Features	21
2.7.4 Chemistry Reagent Features	21
2.7.5 Consumables Specifications	21
Chapter 3 Installation and Transportation of Instruments	22
3.1 Transport and Storage	22
3.2 Unboxing	22
3.3 Packing List	23
3.4 Installation Requirements	23

3.4.1	Instrument Working Environment Requirements	23
3.4.2	Computer Configuration Requirements	24
3.5	Equipment Installation	25
3.5.1	Equipment Appearance	25
3.5.2	Release Instrument Transport Lock	27
3.5.3	First Installation and Run Protocol	28
3.6	Instrument Software Installation	29
3.6.1	FastGene® qFYR Analysis Studio Software Installation	29
3.7	Pre-preparation for boot	32
3.7.1	Instrument Self-inspection	32
3.7.2	System Start-up	32
3.7.3	Experimental Preparation	33
Chapter 4 Operation to Run the Experiment		34
4.1	Software Start	34
4.2	Create New Experiment	36
4.2.1	New Experiment or Loading existing files	36
4.3	Experiment Properties	37
4.3.1	Name	37
4.3.2	Plastic Type	37
4.3.3	Experiment type	38
4.3.4	Chemistry	39
4.4	Experiment Method	40
4.4.1	Reaction volume	40
4.4.2	Thermal lid temperature	40
4.4.3	Basic setting	40
4.5	Plate Setup	42
4.5.1	Setup	42
4.5.2	Quick Setup	44
4.5.3	Remove Wells from the Reaction	44
4.6	Run an Experiment	45
4.6.1	Insert a Plate or Reaction tubes	45
4.6.2	Run the Experimental Program	45
4.7	Save Experiment	47

Chapter 5 Operation of Different Experiment Types	48
5.1 Absolute Quantification (Standard Curve) Experiment	48
5.1.1 Setup of a Standard curve	49
5.2 Experiment of Melting Curve	52
5.2.1 Setup of Melt Curve Analysis	52
5.3 Relative Quantification Experiment (Cq)	53
5.3.1 Setup of comparative Cq (Cq) Analysis	53
5.4 Genotyping Experiments	54
5.4.1 Set Up of a Genotyping analysis	54
5.4.2 Set Up of a High-Resolution Melt Analysis (HRM)	55
5.5 Presence / Absence Experiments	56
5.5.1 Set Up of a Presence / Absence analysis	56
Chapter 6 Result Analysis and Data Export	57
6.1 Result Tab	57
6.1.1 Buttons in Toolbar	57
6.1.2 Other Toolbars	58
6.2 Result Overview	59
6.2.1 Amplification plot	59
6.3.1 Plot Properties	59
6.2.2 Plot Settings	60
6.2.3 Threshold Settings	60
6.2.4 Baseline Settings	61
6.2.5 Target Settings	61
6.2.6 Results as Reaction Board	62
6.2.7 Results as List	63
6.2.8 Raw Amplification Plot and Raw Melt Peak Plot	64
6.2.9 Standard Curve	65
6.2.10 Melt Curve	66
6.2.11 Gene Expression Map	67
6.2.12 Analysis Settings	68

6.2.13	Genotyping Maps	69
6.2.14	Raw Melt Curves of the High-Resolution Melt analysis	70
6.2.15	Aligned Melt Curves of the High-Resolution Melt analysis	71
6.2.16	Difference plot of the High-Resolution Melt analysis	72
6.2.17	Presence/Absence Plot	74
6.2.18	QC Summary	75
6.3	Data Export	77
6.3.1	Toolbars in Export Tab	77
6.3.2	Data Export	77
6.3.3	Printed report	79
Chapter 7 Instruments Maintenance		81
7.1	Instrument Cleaning	81
7.1.1	Cleaning the Instrument	82
7.1.2	Clean Sample-tray and Reaction-holes	82
7.2	Instrument maintenance	83
7.2.1	Keep Air-Circulation	83
7.2.2	Keep Stable Electricity Supply	83
7.2.3	Keep Clean	83
7.2.4	Waste Disposal	83
7.2.5	Fuse Replacement	84
7.2.6	Overheating Protection	84
Chapter 8 Troubleshooting		85

Safety markings used on instruments

Symbol	Heading	Description
	Caution	This symbol is used to indicate that non-compliance with instructions or procedures may lead to physical injury or even death or could cause damage to the instrument. Consult the Operator's Manual.
	Biohazard	This symbol is used to indicate that certain precautions must be taken when working with potentially infectious material.
	Hot surface	Indicates the presence of a hot surface or other high-temperature hazard and to proceed with appropriate caution.
	Electricity hazard	Indicates the presence of high voltage at the instrument.
	Appliance class 1	Indicates that insulation of voltage-carrying parts (= basic insulation) and connection of touchable metal parts to the protective conductor (= grounding) protects against excessive touch voltages
	CE symbol	This symbol indicates European conformity.
	Serial number	Identification of the serial number of the instrument.
	Date of Manufacturing	The date of manufacturing will appear next to this symbol.
	Manufacturer	The name and the address of the manufacturer will appear next to this symbol.
	Disposal	Do not dispose of this product as unsorted municipal waste. Follow local municipal waste ordinances for proper disposal provisions to reduce the environmental impact of waste electrical and electronic equipment (WEEE).

1.2 General Instrument Safety and Precautions

The operator shall not disassemble the instrument, replace components or debug the instrument without the authorization of our company. If one of the above is needed, it must previously be approved by our company, and completed by trained professionals, otherwise unexpected consequences will occur.

Please avoid collision, damage the instrument and store carefully.

The user should immediately unplug the instrument from the power outlet and contact the supplier or ask our professional maintenance staff if one of the following is to happen:

- The instrument is subjected to rain or flooding.
- Abnormal sound or smell in the instrument.
- Collision or damage to the enclosure.
- The function of the instrument changed.

It is forbidden to carry or move the instrument during the operation of the instrument.

The openings on this instrument are ventilated. In order to avoid excessive temperature, **do not block or cover these vents during the operation of the instrument**, or use dust shields and any other substances to cover the surface of the instrument.

If you need to install or transport this instrument, please contact our company to request professional personnel or professional guidance. Otherwise, we will not bear any responsibility for the damage caused by the instrument.

After the installation of the instrument, the transport lock should be properly retained in accordance with the requirements of the technical personnel.

During the operation of the instrument, do not forcibly open the sample draw, otherwise it will destroy the biological safety of the instrument, its electromagnetic radiation, and other protective measures.

Do not force consumables (8 tubes / test tubes /96 well plates, etc.) not matched with this instrument into the sample draw.

Failure to use this instrument in accordance with the manufacturer's prescribed method may damage the protection provided by the instrument.

1.3 Personal Safety and Precautions

The weight of the instrument is heavy. Moving or lifting the instrument requires appropriate tools, methods, or cooperation with others to complete. Please avoid moving the instrument alone without the cooperation of others. Improper lifting of this instrument may cause physical injury, pain and/or instrument damage.

Do not touch the power plug, power cord or switch with wet hands.

High surface temperature:

During the operation of the instrument, the heating module of the sample draw may become very hot! During the experiment and after the experiment, do not touch the heating block directly with your hand or any part of the body to avoid scalding. Please open the sample draw after the heating block temperature drops to standby temperature and take out the sample.

1.4 Electrical Safety and Precautions

Prohibition

This instrument has a voltage harmful to the human body! At any time, before disassembling the instrument shell, please cut off the instrument power supply. It is forbidden to replace components when power lines are connected.

The shell of this instrument should be properly grounded through the power ground wire. Any damage to the internal or external grounding path of the instrument may be dangerous.

Note: If leakage is found, please cut off the power immediately and stop using the instrument.

Note: Please cut off the power supply before moving the instrument.

Use the power cord provided with this instrument. If the original power cord is broken, worn, or disconnected, the same power cord should be replaced as soon as possible.

In order to avoid the danger of electric shock, the power cord of this instrument must be reliably grounded. The power cord of this instrument is a standard plug power cord. Please insert the power plug into the appropriate three-wire grounding socket (the external network power supply connected by the socket must be reliably grounded) to ensure the safe use of the instrument.

The electrical supply in which the instrument is located must be connected with ground wire. Please carefully check whether the power connection is firm. Do not hard pull the power cord. When the plug is plugged into the power supply, make sure the plug is fully plugged into the socket.

Please keep the power plug and the power cable away from high temperature objects such as heater. When using this instrument, please do not place any items on the power cord, do not put the power cord in the place where people often walk.

The fuse type of this instrument is T10AH250VP, placed in the backup box at the power outlet at the back of the instrument. The use of improper fuses may damage the instrument's line system and cause fire. Before turning on the instrument power switch, check and make sure the fuse is properly installed.

In order to prevent fire hazards, use this instrument only with the indicated fuse. When replacing the fuse, please cut off the power supply, pull out the power cord, pry open the fuse box with a word screwdriver, and replace the old fuse with the same new fuse.

1.5 Environmental Safety and Precautions

This instrument is only suitable for indoor use, indoor ventilation should be good, and free of corrosive gas.

EDM may cause explosion hazard and is prohibiting the use of this instrument in the presence or possible presence of flammable and explosive gases.

The working environment temperature of this instrument should be between 10°C~30°C and the relative humidity should ≤85%.

The working environment pressure of this instrument should be normal atmospheric pressure (altitude less than 2000 meters).

1.6 Biosafety and Precautions

Biological hazard

The sample object of this instrument is nucleic acid. In practice, please regard it as a biological sample with potential biological hazard. When handling and operating samples, generally applicable safety precautions shall be taken and appropriate protective goggles, clothing and gloves shall be worn.

Users are requested to comply with all applicable local or national regulations to complete the disposal of waste samples and contaminated materials.

This instrument shall be treated as waste with biological pollution hazard. Before reuse, recycling, or disposal, the instrument needs to be purified (including cleaning, disinfection and/or sterilization). This instrument shall be handled in accordance with relevant local or local regulations.

During any operation, if liquid samples overflow, appropriate disinfectants should be quickly used for disinfection, to avoid the spread of pollutants to laboratory personnel or contaminated instruments.

1.7 Electromagnetic Compatibility (EMC) Standards

This instrument should be installed and used according to the electromagnetic compatibility information in this chapter.

The electromagnetic compatibility of this instrument is classified into categories A and groups I.

1. This instrument meets the emission and immunity requirements specified in the EN 61326-1:2013 and EN 61326-2-6:2013
2. This instrument is designed and tested according to A kinds of instruments in the CISPR 11:2016
3. Portable and mobile RF communication instruments may affect the use of this instrument. It is recommended to stay away from or close the portable and mobile RF communication instruments when using this instrument normally.
4. This instrument must be used with the power cord provided by our company, the length of the power cord is not more than 1.5 m

Except the accessories provided by our company, the use of other manufacturer accessories may lead to an increase in the emission of this instrument or a decrease in immunity.

1. Please evaluate the electromagnetic environment before this instrument is used.
2. Do not use this instrument next to strong radiation sources (such as unshielded RF sources), otherwise it may interfere with the normal operation of the instrument.

Note: It is the responsibility of the user to ensure the EMC environment of the instrument so that the instrument can work properly.

DOMINIQUE DUTSCHER SAS

Chapter 2 Product Overview

2.1 Scope of application

2.1.1 Intended Use

FastGene® qFYT Real-Time PCR Systems are used to run real-time fluorescence PCR experiments (Real-time PCR) and to analyze the experimental data. The instruments are operated in a laboratory, in conjunction with the corresponding reagents, for rapid and accurate quantitative and qualitative detection of target nucleic acids from human samples (e.g., blood, oral swabs, nasopharyngeal swabs, body fluids, etc.) or other analytes in the patient's body, or for melting curves, genotype analysis.

2.1.2 Product Intended Use Environment

Institutions such as medical institutions, laboratories, and companies that meet the requirements of the product operating environment.

1. diagnostic laboratory use
2. General laboratory research use. Its users are professional and technical personnel of the hospital laboratory or general laboratory and need specialized training for PCR laboratory technology and instrument, software operation, and have skilled relevant operation skills.

2.2 Application Areas

- Basic scientific research
- Clinical detection of pathogens
- Genetic screening
- Cancer diagnosis
- Diagnosis and treatment of cardiovascular diseases
- The drug genome
- Public Health and Safety Surveillance
- Food Hygiene and Quarantine
- Customs Import and Export Quarantine
- Transgenic and Pathogen Detection in Animals and Plants
- and others

2.3 Basic Principles

PCR principle is similar to the natural replication process of DNA. Its specificity depends on oligonucleotide primers complementary to both ends of the target sequence. PCR consists of three basic reaction steps: denaturation-annealing-extension. Repeated cyclic denaturation-annealing-extending processes can amplify the target gene by millions of times in 1-2 hours, for a high detection sensitivity.

The principle of real-time fluorescence PCR is to add a fluorescent reporter (probe or dye) to the PCR reaction system. The target nucleic acid derived from DNA samples is qualitatively or quantitatively detected by fluorescence detection system and real-time monitoring of the fluorescence value. Real-time fluorescence PCR detection has higher specificity and sensitivity than end-point PCR detection.

2.4 Main Functions

FastGene® qFYR Real-Time PCR Systems are special instruments for real-time fluorescence detection. It integrates PCR amplification, fluorescence detection and data analysis. It can monitor the increase of fluorescence in each test tube in real time as the amplification increases. After the amplification, the software automatically processes the experimental data, carries on the quantitative / qualitative, melting curve or genotyping analysis to the sample, displays and prints the experimental results.

2.5 Product Composition

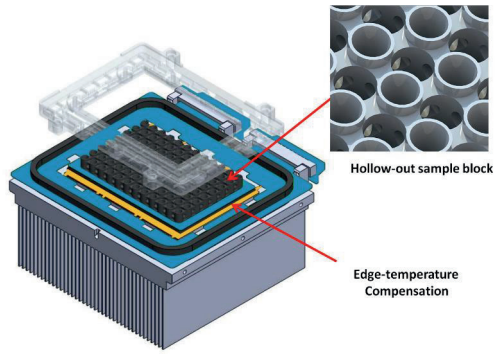
This product mainly consists of electronic control system, power module, temperature control system, detection system, shell components and software(V1).

2.6 Product Structure

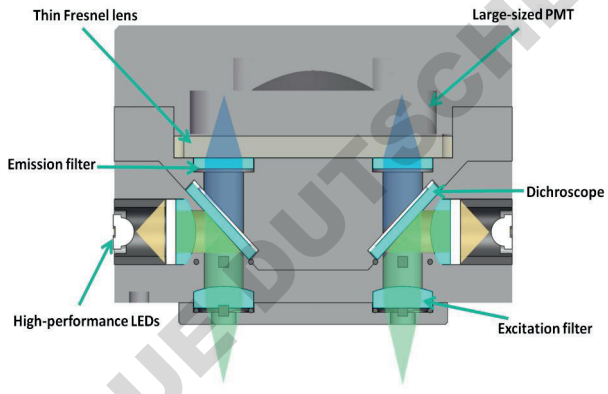


Diagram of the Structure of the Machine

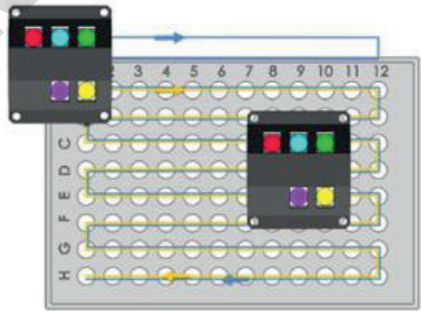
- | | | | |
|--------------------|-----------------------|-------------------|-------------------|
| 1. Sample module | 2. Sample draw | 3. Inlet | 4. Transport lock |
| 5. Power indicator | 6. Status indicator | 7. In/Out button | 8. Vent |
| 9. Power switch | 10. power cord socket | 11. USB interface | 12. Fuse |



Schematic diagram of temperature control module



Schematic diagram of optical path module



Schematic illustration of optical scanning patterns

2.7 Instrument Parameters and Characteristics

2.7.1 Physical Specifications

Instrument specifications	Size: 350 mm(L) × 520 mm (W) × 370 mm (H). Weight : 25 kg
Packing specifications	Size: 710 mm(L) × 540 mm (W) × 580 mm (H). Weight : 36 kg
Power supply specification	power supply voltage : AC 110-230 V Frequency : 50 Hz. Power : 750 w
Communication specifications	USB ports
Environmental conditions	Temperature : 10°C ~ 30°C. Humidity : ≤85% RH no condensation. Atmospheric pressure : 85.0 kPa ~ 106.0 kPa. Altitude : < 2000m
Storage and transportation environment	Temperature : -20°C ~ 55°C, in the transport box. Humidity : ≤85% RH
Running noise	Maximum noise when running instrument does not exceed 60dB (A)

2.7.2 Instrument Technical Parameters

Thermal parameters

Heat cycle	Peltier semiconductor
Temperature control mode	Temperature control module
Maximum ramp rate	3.6 °C/s
Temperature accuracy	± 0.2 °C
Temperature uniformity	± 0.2 °C

Optical parameters

Excitation source	Single color LED	
Detection device	High sensitivity MPPC (silicon photomultiplier tube)	
Fluorescent channel number	4 channels (2x FAM)	
Applicable to fluorescent	Channel 1	FAM/SYBR Green etc.
	Channel 2	VIC/JOE/HEX/TET etc.
	Channel 3	ROX/Texas Red etc.
	Channel 4	Empty
	Channel 5	Cy5 etc.
	Channel 6	FAM/SYBR Green etc.

Detection parameters

Sample size	1-96 wells
Sample volume	10-50 µl
Repeatability of fluorescence intensity detection	CV ≤3%
Detection of fluorescence intensity	CV ≤5%
Sample repeatability	CV ≤ 3%
Linear fluorescence intensity detection	A linear regression coefficient $ r \geq 0.990$ in 5 concentration gradients
Sample linear correlation	A linear regression coefficient $ r \geq 0.980$ in 5 concentration gradients

2.7.3 Software Features

Software interface: Wizard interface, intuitive sample plate layout and program settings, easy to use operation editing.

Software functions: absolute quantitation, relative quantitation, genotyping, HRM-analysis, and other analytical functions to meet the requirements of a variety of experiments.

Language Support: English.

Data transmission: The instrument can transmit the experimental data to the connected computer in real time during the experiment.

Overlong program settings: Each stage may include up to 100 steps and up to 10 cycles.

2.7.4 Chemistry Reagent Features

PCR reagent: Open reagent platform, all quantitative, qualitative PCR reagents are applicable.

Fluorescent dyes: Suitable for fluorescent dyes such as

FAM/SYBR Green/ FastGene® IC Green

VIC/HEX/TET/JOE

ROX/Texas Red

Cy5

2.7.5 Consumables Specifications

0.1 ml clear/white PCR thin-walled single tube, flat-topped transparent optical tube cover.

0.1 ml clear/white PCR thin-walled 8-well tubes, flat-top transparent optical tube cover.

0.1 ml clear/white PCR thin-walled 96-well plate with no hemline or hemline.

Note: FastGene® qFYT Realtime PCR System is compatible with low 0.1 mL PCR flat top transparent tube cover reaction tube /8-well joint tube, no skirt or half skirt edge 96-well PCR reaction plate.

Do not use 0.2 mL PCR reaction tube and convex cover.

If the sample tubes are just a few, please use 8-well tubes for support on both sides, or use empty single tubes in the four corners to prevent uneven force on the plate slot.

Chapter 3 Installation and Transportation of Instruments

3.1 Transport and Storage

Product transportation is carried out in accordance with the requirements of the product. Original packaging must be used in transportation to avoid damage to the instrument.

The instrument in the packaging and transport state, should be stored in the ambient temperature of -20°C~55°C, relative humidity less than 85%, and the air cannot contain corrosive agents.

The outer packaging of the product specifies the transport instructions allowed for this product, which are:

Packaged products are only allowed to be placed in the direction indicated by the arrow.

Please hold the handling process lightly.

Maximum stack number is limited to four layers, do not exceed four layers stack.

Do not transport or store this product in rain or wet environment.



3.2 Unboxing

The outer packing of the product is cardboard box, filled with shock absorber foam. Please do not rush to open the equipment packaging after receiving the equipment. Carefully check the packaging's appearance for damage. Please check the content you received if parts are missing and damaged after unpacking. If the product is damaged during transportation, please do not use it, and contact NIPPON Genetics EUROPE or the distributor!

3.3 Packing List

	NAME	Unit
1	Real-Time PCR System FastGene® qFYR	1
2	Instrument power cable	1
3	Instrument data cable	1
4	Fuse	2
5	hexagon spanner	1
6	Packing List	1
7	USB Stick (including software and electronic user manual)	1

3.4 Installation Requirements

3.4.1 Instrument Working Environment Requirements

Location: The main unit must be placed on a stable, horizontal working table, avoiding direct sunlight, not near heating equipment. The instrument's environment must be at ambient temperature of 10~30°C, with a relative humidity less than 85%. For indoor use only.

Surrounding environment: Do not install the main unit next to instruments with strong electromagnetic interference or high induction factors, such as refrigerators, high-speed centrifuges, oscillators, etc.

The mainframe must be placed **at least 15 cm from the surrounding object or wall** for heat dissipation and ventilation of the instrument, and for the convenience of users to turn on and off the instrument power supply.

Do not place the mainframe in a narrow space where it is difficult to operate and disconnect the power supply!

Power requirements: 110-220 VAC, 50/60Hz, voltage fluctuations <10 V.

Power outlet: To prevent electrical shock, the instrument mainframe must be connected to a three-core grounding socket that meets the safety standards. The voltage is ~110-220 V (50-60 Hz) and the zero-ground voltage ≤5 V. If conditions permit, connect the instrument to a dedicated power outlet.

Warning: Incorrect grounding may cause electrical shock or instrument damage. Confirm that the input voltage meets the requirements of the instrument and that the fuse has been installed in accordance with the specifications.

3.4.2 Computer Configuration Requirements

The computer installed with the FastGene® qFYR Analysis Studio must have the following configuration:

Processor:	Intel or AMD dual-core CPU,2.8GHz
Memory:	4 GB
Hard disk:	500 GB
Network card:	10 M/100M adaptive network card (optional)
Display resolution:	1440×900 or higher
Operating system:	Windows 10 or above & Office Word/Excel 2007 or above.

Note: The control computer of this instrument is not designed for online use. Connecting it to the network will have the risk of acquiring viruses and becoming the target of hacker attacks. NIPPON Genetics EUROPE is not responsible for any damage caused by an internet connection. It is not recommended to install other software in the control computer. There will be a potential risk of conflict with the instrument software module and may affect the reliability of the results. NIPPON Genetics EUROPE does not provide antivirus software. Therefore, if necessary, take preventive measures to ensure that there is no virus on the computer of this instrument.

3.5 Equipment Installation

The following contents are convenient for users to quickly complete the installation of the FastGene® qFYR Real-Time PCR System. Please be sure to operate according to the following contents. If you have any questions during the installation operation, please contact our support.

3.5.1 Equipment Appearance



Status Lamp

There are power status light “POW” and system status light “STU” on the equipment’s top part. The meaning of status lights is shown in the following:

Name	Status	Means
POW	Blue light	Ready
	Green light slowly flashing	Self-checking
	Green light quickly flashing	Working
STU	Green light on	In idle condition
	Yellow	Caution, able to continue working
	Red	Malfunction, stop working

Equipment switch

The device has a power switch in the back. Turn on the instrument by turning the switch to the "I" position and switch off at the "O" position.

Accessing the Plate

The draw of the FastGene® qFYR Real-Time PCR System is controlled by the top button ▲. The plate holder draw will open as soon as you press the top button. The in-and-out operation needs to be carried out in the idle state. It will not work during a PCR and during the self-inspection. The system does not respond to the in-and-out request.



Data communication

The interface of the device's back panel is the USB, which is used for communication between the computer and the device.

Air inlet

The lower gap of the front panel of the equipment is a set of air intakes. Blocking must be prevented when running. Pay special attention to this gap for air inlet, **it is strictly prohibited to access this area with your hands, as severe injuries can happen!**

3.5.2 Release Instrument Transport Lock

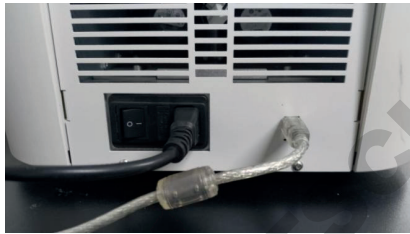
In order to avoid the damage of important parts of the instrument during transportation, a transport lock is added. While the instrument is switched off, find the locking hole at the top of the instrument and remove the soft rubber cap. Use the M4 hexagonal wrench to the inner bolt, press down slightly to the bottom and rotate 90 degrees counterclockwise. This will loosen the wrench, and the transport lock will pop up due to the of an internal spring mechanism of the instrument (as shown below).



STU light status will change from slow flicker to green light on, unlocked successfully.

3.5.3 First Installation and Run Protocol

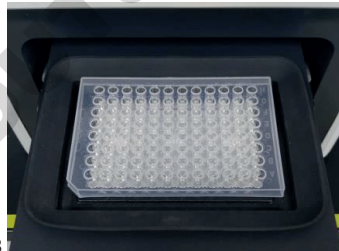
Insert the USB data cable and the power cable (as shown in figure A below) and connect data cable to the computer. After turning on the power supply, press the power switch at the back end of the instrument to turn on the instrument, and wait until the power indicator light (POW) is constantly on, and the system begins self-checking process. When the system self-test is completed, the instrument's normal state lamp (STU) is green (as shown in figure B). Press the plate remove button and remove the support plate in the sample platform (as shown in figure C). The installation steps are completed.



A



B



C

3.6 Instrument Software Installation

3.6.1 FastGene® qFYR Analysis Studio Software Installation

You need to install the FastGene® qFYR Analysis Studio software in your computer before using the FastGene® qFYR Real-Time PCR System. You can find the installation software in the provided USB-drive.

Please refer to the following steps to complete the installation process:

1. Double-click the Setup icon

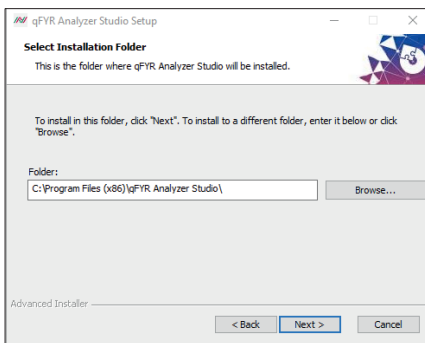


qFYRAnalyzerSt
udiolInstall-V1.0

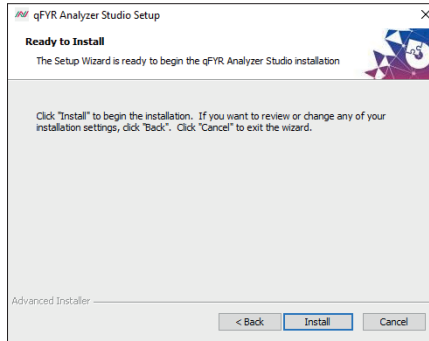
2. Unzip file interface by clicking on "Extract" extract file
3. At the pop-up installation interface, click on next to continue



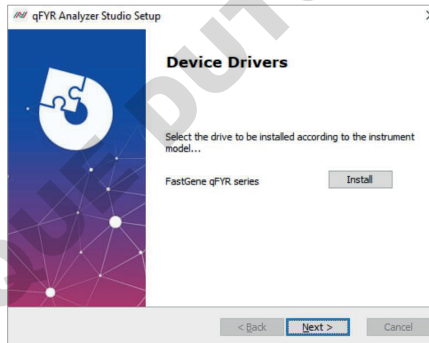
4. Select the destination folder of the installation



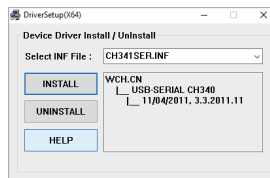
5. Click install to complete the program installation



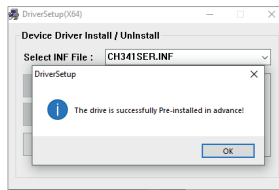
6. You need to pre-install drivers in the system before using FastGene® qFYR Real-Time PCR System and the FastGene® qFYR Analysis Studio software. After installation of the FastGene® qFYR Analysis Studio software, please click on the install button in the window below:



7. Please click on install:



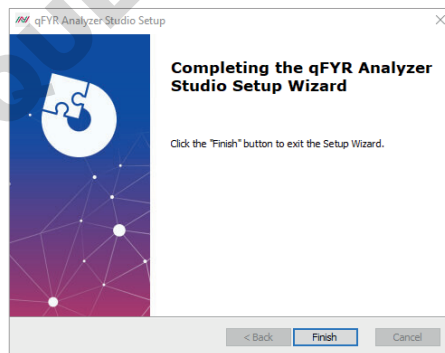
8. The installation will be confirmed:



9. Please close the window of the driver installer and press Next on the window below:



10. The installation is complete by clicking Finish



3.7 Pre-preparation for boot

3.7.1 Instrument Self-inspection

This instrument has the function of self-inspection. Before use, the user should run the instrument's self-inspection to ensure that the instrument can work normally during the experiment.

1. Turn the power switch on at the back of the instrument and turn on the instrument.
2. The instrument automatically enters the self-inspection mode: The automatic inspection includes the instrument version, whether the electricity is in normal working condition, whether the power supply is normal or not, and the position of the initializing motor, etc.
3. After the self-inspection, the top light will constantly show a green color. The instrument will be on standby until used.

Note: Make sure that instrument transport lock has been removed, the control computer and other external instruments have been correctly connected and that instrument's power supply has been connected correctly.

Note: In case of not passing the self-inspection, please turn the machine off and again on for self-inspection. If the instrument still cannot pass self-inspection, please contact the support.

Do not shake the instrument.

3.7.2 System Start-up

- a) Start the computer
- b) Turn on the power switch of the backboard of the instrument, and wait until the power status light POW is blue and always on



- c) Wait for the system to self-check. During the self-check, the status light STU is green flashing state. After the successful self-check, green light will shine constantly.

3.7.3 Experimental Preparation

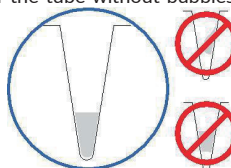
Good laboratory practice for PCR and RT-PCR

When preparing PCR or RT-PCR amplification samples:

- ☑ Use only clean personal protection equipment and lab coat
- ☑ Whenever you suspect that the gloves are contaminated, it is recommended to change them
- ☑ Set up separate areas and special equipment and supplies for the following purposes:
 - Sample preparation and reaction settings
 - Product amplification and analysis
 - To avoid contamination, do not bring amplified products into the reaction setting area
- ☑ Carefully open and cap all sample tubes to avoid splashing or spraying samples
- ☑ Regularly clean the experimental table with proper disinfectants
- ☑ Use calibrated pipettes and anti-aerosol tips
- ☑ Prepare the reaction mixture according to the manufacturer's recommendations for the main mixture and the mixture to be tested
- ☑ Include excess volume in the calculation to provide excess volume of master mixes for losses during reagent transfer
- ☑ Dilute the sample and any standards with TE buffer or water
- ☑ Be careful when diluting samples and standards, errors or inaccuracies in the dilution process directly affect the accuracy of the data
- ☑ Place the diluent and assay mixture in the refrigerator away from light until they are ready for use. Overexposure may affect fluorescent probes or dyes
- ☑ Before use:
 - Thoroughly mix the master mix by rotating the bottle
 - Resuspend the assay mixture by vortexing and then centrifuge briefly.
 - Thaw any frozen samples on ice. After thawing, resuspend the sample by vortexing, and then centrifuge the tube briefly.

Guide to set reaction in plate or tube

- ☑ Make sure that the liquid in each tube is at the bottom of the tube without bubbles. Otherwise centrifuge the well plate again
- ☑ Ensure that the plate or tube is properly sealed
- ☑ Keep the reaction plate or reaction tube in a dark environment at 4° C until it is ready to be loaded into the instrument
- ☑ Keep the bottom of the plate clean. Liquid and other contaminants on the bottom of the plate will contaminate the sample and cause abnormally high background signals
- ☑ If necessary, use permanent markers or pens to mark on the side of the test tube and plate, do not use highlighters



Chapter 4 Operation to Run the Experiment

This section will describe in detail how to set up and run experiments using FastGene® qFYR Analysis Studio software.

4.1 Software Start

1. Double-click the desktop software icon to launch the software

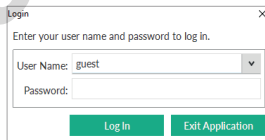


2. Interface of the software startup



3. User login

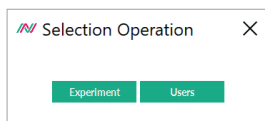
After the software starts, the system Login dialog box will automatically pop up (see below). Select the user by changing the "User Name". If no user has been defined, you can proceed with "guest". Click on the "Log In" button to start the software.



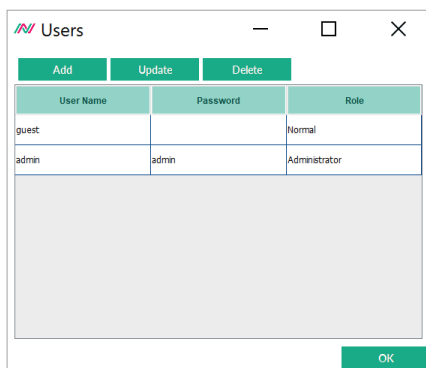
4. Adding a user

Log in as Administrator. Select "admin" in the User Name and enter the Administrator password. The default password is **admin** (Please let the administrator of the instrument change the password as soon as possible).

Select "Users" in the pop-up window.



The next window will let you add, edit ("Update"), or delete users.



5. Startup interface will be shown:

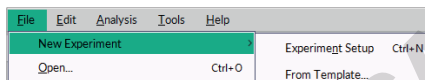


4.2 Create New Experiment

The Startup interface is used to create a new experiment, run, or open previously saved templates to create a new experiment.

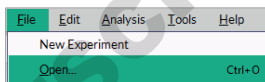
4.2.1 New Experiment or Loading existing files

Experiment Setup



1. Click the "Experiment Setup" button at the bottom right of the startup interface or select "New Experiment" from the menu bar to start a new experiment setup.
2. Click "From template" in the menu bar to create a new experiment by loading a previously saved experiment template.
3. Click the "Open" button at the bottom right of the startup interface or select "Open" from the menu bar to open previously saved experiment or template files.

Open...

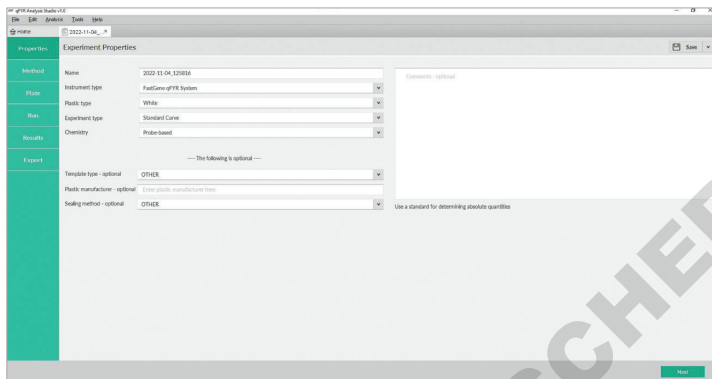


The file types are as follows:

- a) "*.qpt" file is a template file for experiment operation and contains information about operating conditions and reaction plate settings.
- b) "*.qps" file is a complete raw data file, including operating conditions, reaction plate settings and experimental results (see Chapter 5).

4.3 Experiment Properties

The "Experiment Properties" interface is used to define the relevant properties of the experiment according to the actual experiment. This includes the name and type of the experiment, as well as the selection of the reaction tube and PCR reagent.

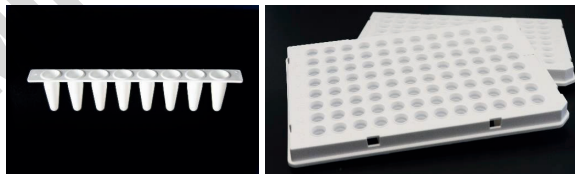


4.3.1 Name

The default setting for the experiment name is the current time and date, which can be changed as needed. Special characters are not supported.

4.3.2 Plastic Type

The instrument is compatible with the common fluorescent quantitative reaction tube types, including 0.1 mL PCR single tube, 8-well strip, and 96-well plates. White tube or transparent tube (including frosted tubes) can be selected according to the reaction tube material. Reading of the wells will be adjusted according to the selected reaction tube type. Compared with transparent tubes, white tubes can reduce the loss of optical signal and crosstalk. Therefore, we recommend to use white opaque reaction tubes and plates to obtain better experimental data.



4.3.3 Experiment type

Select the experiment type according to the actual purpose of the experiment. The software will associate the subsequent experiment settings according to the selected experiment type. For the experiment type, please refer to the following table:

Type of experiment	Explanation
Standard Curve (Absolute quantification)	Absolute quantification based on a standard curve is a real-time quantitative PCR analysis method suitable for researchers who need to determine the actual concentration or copy number of target genes. For absolute quantification, a template solution with a known concentration needs to be serially diluted several times. The obtained data is used to generate a standard curve. The standard curve is plotted with each concentration and corresponding Cq value. The Cq value of the unknown sample is then compared with this standard curve to determine its quantity.
Relative Standard Curve or Comparative Cq ($\Delta\Delta Cq$) (Relative quantification)	Relative quantification is suitable for most gene expression studies. It can analyze the up-regulation or down-regulation of target gene expression levels in control samples and one or more experimental samples. With this technique, there is no need to accurately determine the copy number, but to focus on the fold change compared to the control. The $\Delta\Delta Cq$ method is a very common method of relative quantitative analysis. It compares the results of experimental samples including controls (such as untreated or wild-type samples) and normalization targets (such as housekeeping gene expression). Using this method, the Cq of the target gene in the same two samples can be compared based on the Cq of the normalization gene in the test sample and the control sample. The resulting $\Delta\Delta Cq$ value can be used to determine the fold difference in expression.
Melt curve or High Resolution Melt	The melt curve experiment is used to determine the melting temperature (T_m) of the PCR product detected by an intercalating dye, such as SYBR™ Green dye. Gene sequences with different base compositions or lengths have different T_m , so different reaction products can be determined according to the T_m value, including non-specific product. During a high-resolution melt analysis, the change in fluorescence is detected at very small temperature increase steps, allowing the identification of SNPs and mutations. For the detection of unknown or new mutations, saturated DNA combined with dyes is usually used to genotyping by high resolution melting curve.
Genotyping	Real-time fluorescence quantitative PCR can provide different methods for genotyping analysis. For the detection of known mutations, the most commonly used basic method is the end point genotyping using enzyme cleavage hydrolysis probe, and the more advanced method is the fusion curve genotyping using hybrid probe. The method can be easily improved and applied to the detection of various other SNP.
Presence or Absence	Protocol using a probe-based assay to control the presence or the absence of a target.

4.3.4 Chemistry

The instrument is compatible with most of the fluorescent quantitative PCR reagent consumables in the market. You can choose the probe method (TaqMan™ reagent) or the dye method (SYBR™ Green reagent) to carry out subsequent experiments according to the specific experimental design. For the comparison of the probe method and the dye method, please refer to the following table:

Methods	Advantages	Disadvantage	Scope of application
Dye-based Method	Widely used Sensitive Convenience Cheap	Difficult-to-design primers Non-specific binding	Suitable for quantitative analysis of various target genes in scientific research, research of gene expression, research of transgenic animals
Probe-based Method	High specificity Good repeatability	Expensive Only suitable for specific targets	Pathogen detection, disease resistance gene research, Drug efficacy assessment, diagnosis of genetic diseases

4.4 Experiment Method

The "Method" interface is used to set the specific parameters of a quantitative PCR, including reaction volume, stage, step, temperature, time, and cycle number, etc. The above parameters can be carried out according to specific experimental needs and corresponding reaction reagent requirements.



4.4.1 Reaction volume

The default volume is 20 μL . Volumes starting from 1, up to 50 μL are supported.

Volume: μL

4.4.2 Thermal lid temperature

Thermal lid temperature is fixed to 100°C and cannot be changed.


Cover:100.0 °C

4.4.3 Basic setting

1. The values of time, temperature, heating rate (melting curve mode) can be set by entering a value in the value area or clicking the arrows . Temperature can additionally be changed by clicking and dragging in the temperature curve.

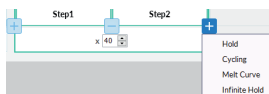
Note: The minimum value of the time setting is 00:01 minutes.

The temperature is selected

- Light up the camera icon  to select the data collection point
- The camera is turned on by default to collect data after the extension is completed
- If you need to add a reaction step in a certain stage of PCR, hover the mouse to the bottom left or right step area and click "+" to add a step before or after the current step. The "-" button removes the selected step.



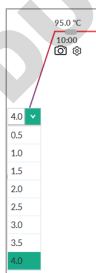
- If you need to add a reaction stage of the PCR, hover the mouse to the bottom left or right stage area and click "+" to add a stage before or after the current stage and select the type of stage (Hold, Cycling, Melt Curve, Infinite Hold) that should be added. The "-" button removes the selected stage.



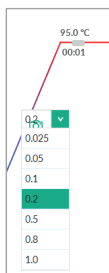
- The number of cycles can be changed by entering a value in the value field or clicking the arrows. The standard number of cycles is 40.



- The ramp rate can be set in the drop-down list at the beginning of each step. Ramp rate is given at temperature change within the sample volume and can be set between 0.5 and 4 C/s.

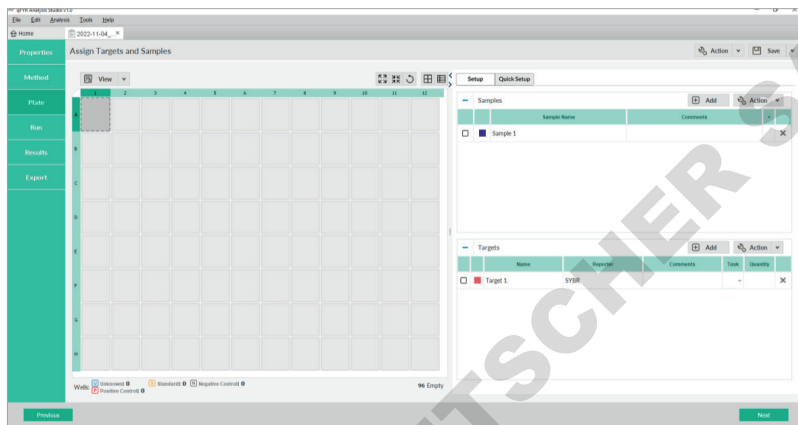


- The temperature interval can be set in the drop-down list on the camera icon during a melt curve analysis in which the fluorescence signal is measured. The smaller the value, the more data points are collected. Standard value is 0.2 °C/detection step.



4.5 Plate Setup

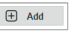
The “Plate Setup” interface is used to set the properties of the reaction wells, including assigning samples, test targets, reaction well tasks and other properties to each reaction well. This will make the identification of the sample and the subsequent analysis possible.

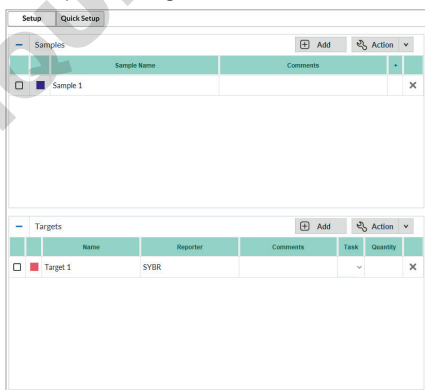




Note: The plate setup can be performed before, during and after the experiment.

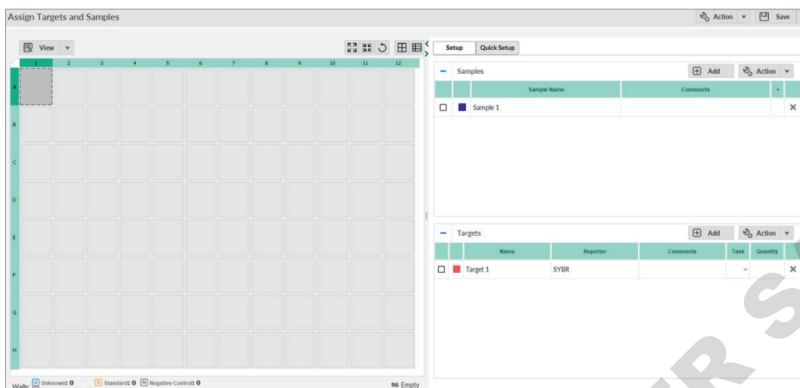
4.5.1 Setup

Define and assign well properties in the “Setup” window of the plate setup:

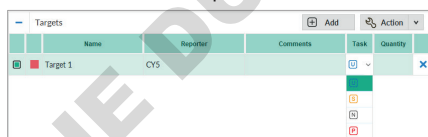
1. Click , to add samples and target items



2. Click on the right  to remove samples and targets items
3. In  (well plate view), select the reaction well according to the corresponding well position of the actual reaction tube



4. Assign the sample (nucleic acid source) and the target item (gene of interest) to the selected well position and click the text box of each field to name the sample and target gene for actual test.
5. When you enter a new sample or target item in the “Setup” window, the software will automatically fill the Reporter with default values (FAM/SYBR) and quenching groups (NFQ-MGB) and assign tasks (unknown). Change the dye or probe used accordingly. After the setting is completed, check the corresponding samples and target to assign the set attributes to the corresponding well positions selected previously.
6. Assign tasks in the window of the “Plate Setup” tab:



7. Select the reaction well in (well plate view).
8. In the inspection item, select the check box of the inspection item, and then select the task from the drop-down list.

Reaction type	Duty
Unknown (sample to be tested)	
Negative control	
Positive control	
Standard	
Homozygous alleles 1/1	
Homozygous alleles 2/2	
Heterozygous alleles 1/2	
Positive Control - IPC	
Blocked IPC control	

After the above settings are completed, assign the corresponding samples and targets items to the corresponding selected wells.

4.5.2 Quick Setup

"Quick Setup" is a function module for quick and easy setup of samples and targets. After selecting the well position to be set, you can click the sample text box and target text box to manually enter the name. If settings have been made in the "Setup", you can select the options defined in the "Setup" through the drop-down menu to assign attributes to the corresponding well positions.

4.5.3 Remove Wells from the Reaction

Select the wells to be removed, click the right mouse button, and select "Clear". For multiple wells, drag select these wells, then click the right mouse button to select "Clear".

4.6 Run an Experiment

4.6.1 Insert a Plate or Reaction tubes

1. Press the access button on the top of the instrument.
2. The instrument's heating block will be ejected.
3. Load the reaction tube or plate onto the 96-well block.

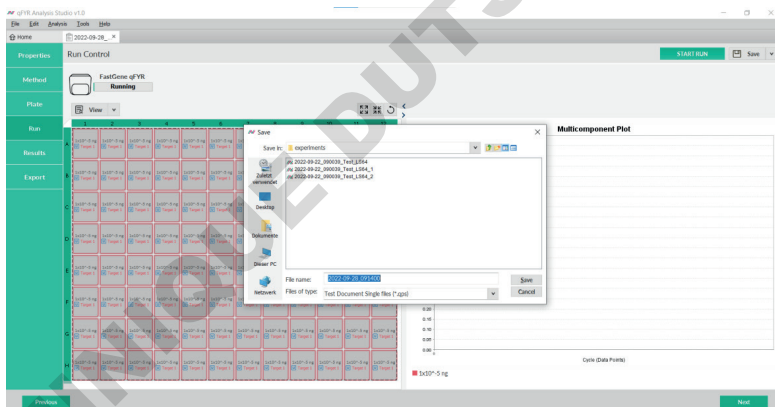
Note: When the drawer is closed, the heating lid will apply the appropriate pressure to securely place the tube band in the module.

4. Press the access button again to close the heating block.
5. After the operation is completed, press the access button to eject the heating block, remove the reaction tube or plate from the heating block, and then close the door by pressing the access button.

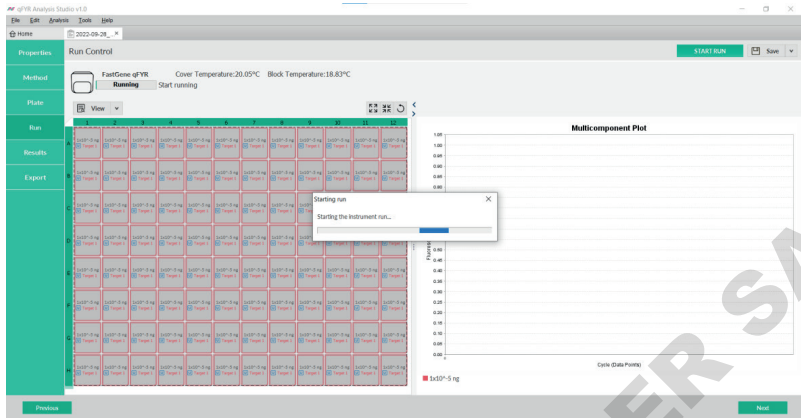
Watch out! Risk of personal injury. During the operation of the instrument, the heating block can reach a temperature of 100 °C. Allow it to cool down to room temperature before processing.

4.6.2 Run the Experimental Program

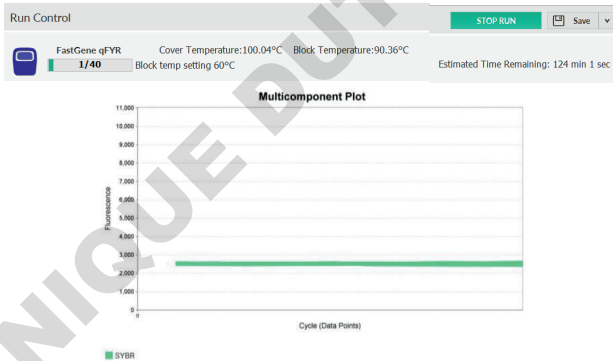
1. In the "Run" tab of the desktop software, click "Start Run". After clicking "Start Run", a save dialog box appears, select the data file storage location and name.



2. After saving, the instrument starts to run the program, and the real-time heating lid temperature and reaction plate temperature will be displayed in the upper left corner of the running interface.



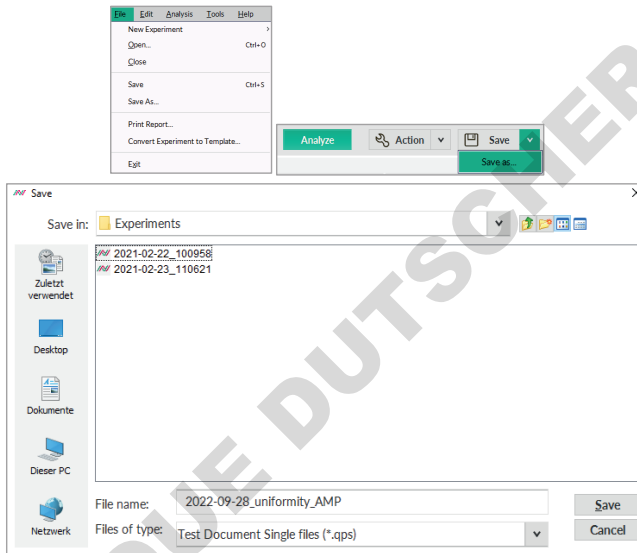
- When the temperature of the heating lid reaches 100 °C, the real-time heating lid's and reaction plate's temperature, and the cycle number of the reaction will be displayed in the upper left corner of the running interface.



Note: In the initial reaction cycles, the original data map is most of the background or baseline. When the amplification reaction enters the exponential growth phase, the curve will rise.

4.7 Save Experiment

Click the "File" option in the menu bar, choose "Save" or "Save as" to save the original experimental data. At each step of the experiment process, you can choose to save the experiment in the upper right corner of the interface. The extension of the experiment file saved before running is .qpt (experiment running template). The extension of the experiment file saved after the operation is completed, is .qps (original data file), which contains all the original operation data and analysis results.



Chapter 5 Operation of Different Experiment Types

FastGene® qFYR Real-Time PCR System experiments are divided into seven steps:

1. Create an experiment
2. Set Experimental Properties
3. Set the operating conditions
4. Set the samples and targets
5. Start the experiment
6. View and analyze the results
7. Export the experimental results

Please see Chapter 4 for how to create, run, analyze, and review an experiment. The next chapter explains how to operate the different types of experiments within the software.

5.1 Absolute Quantification (Standard Curve) Experiment

Absolute quantification is a real-time fluorescence quantitative PCR analysis method suitable for researchers who need to determine the actual copy number of targets. To carry out absolute quantification, the target template solution with known concentration should be diluted several times continuously, amplified by real-time fluorescence quantitative PCR, and a standard curve is generated by using the obtained data. A standard curve is drawn with the concentration of each target and the corresponding C_q value. C_q values of unknown samples are then compared with this standard curve to determine their concentration or copy number.

The standard curve method is used for absolute quantification, and the template standard with known concentration or quantity is required, which means that the template should be accurately quantified before the curve is generated. Quantitative accuracy is directly related to the quality of the standard curve. The template used to generate the standard curve and the method used to quantify the template are the basis of the experiment. The accuracy of continuous dilution is very important, and the RT and PCR efficiency of target template and continuous dilution of actual samples are very important.

Although you may need uniform pure templates for initial copy number determination and standard curve generation, it is best to use target templates as similar as possible to experimental samples. Since steps such as nucleic acid extraction and reverse transcription can affect the dynamic range of the reaction, the same processing steps as the experimental samples should be adopted.

In the standard curve experiment:

- Software generates standard curves using data from standard dilution series.
- Software uses standard curves to calculate the number of unknown samples.

Type of response:

- Many samples can be analyzed in standard curve experiments, but each sample needs its own standard curve.
- The following table lists the types of sample settings involved in the standard curve experiment:

Type Setting	Example Description
Standard	contains a known number of target samples
Unknown	sample to be tested
No template control (NTC)	water or buffer replacement template, no target amplification should occur in NTC hole

The accuracy of quantitative experiments increases with the increase of repeated reactions (usually containing at least three repeats). For accurate detection, at least five dilution points in a wide range of standard quantities should be prepared. The range of the standard quantity can be adjusted according to the expected level of presence of the gene.

---- The following is optional ----

Template type - optional	OTHER
Plastic manufacturer - optional	Enter plastic manufacturer here
Sealing method - optional	OTHER

5.1.1 Setup of a Standard curve

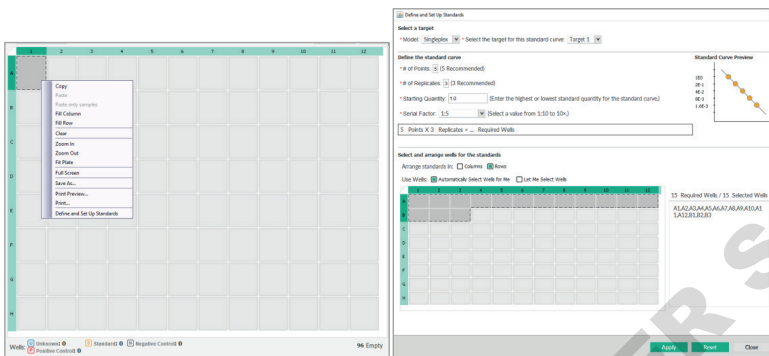
1. Select experiment type "Standard Curve".

Experiment type	Standard Curve
Chemistry	Standard Curve
	Relative Standard Curve
	Comparative Cq (ΔΔCq)
	Melt Curve
Template type - optional	High Resolution Melt
Plastic manufacturer - optional	Genotyping
Sealing method - optional	Presence/Absence

2. Choose the used Plastic type and Chemistry.
3. Add name and optional information.
4. After the Method setting is completed, enter the Plate section, or click **Next** in the lower right corner of the page to enter the well plate setting interface.

Note: The plate setup can be set before, during, or after the reaction operation.

- Right-click in any area of the plate view and select "Define and Set Up standards".

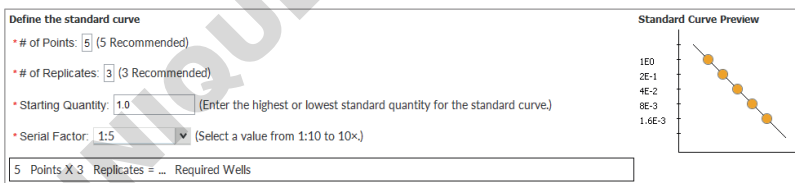


- Select the target, which should be used for generation of the standard curve.



Note: Singleplex means that there is only one gene to be tested in each reaction well, and Multiplex means that there are two or more genes to be tested in each well.

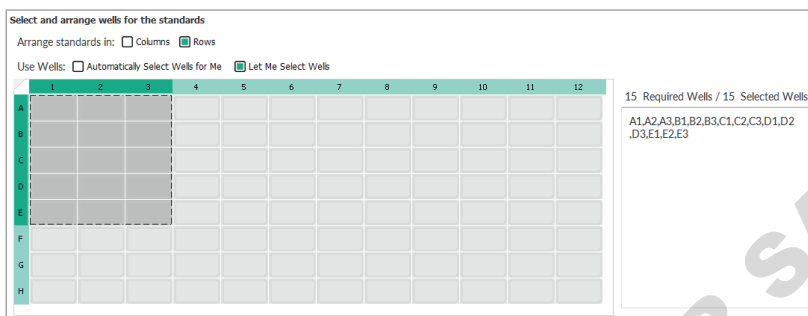
- Set the number of points and replicates, dilution factor and starting quantity according to your experiment.



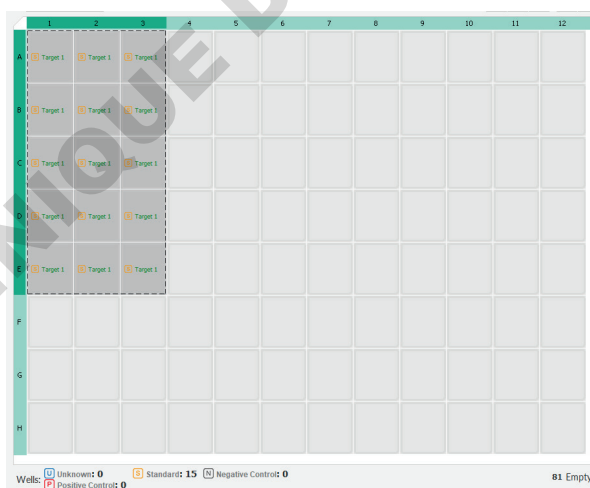
The parameters of the standard curve can be set according to the specific experimental requirements and conditions:

- Standard concentration dilution gradient: recommended at least five different dilutions.
- Three replicates per dilution are recommended.
- Starting Quantity: Enter the maximum or minimum quantity value of the standard, excluding units (units containing copies, copies/ μ L or ng/ μ L) and the dilution factor.

8. Select and arrange standard wells.



- The software can automatically select the reaction well by columns or rows or the operator can select their own reaction well according to the need and arrange the well position of the standard product.
 - After the standard well position distribution is set, the software will arrange the standard well position according to the above setting, and display the corresponding well position arrangement and the number of wells.
9. The software will automatically apply the above settings to the plate setup, and automatically define the above well position as the standard property (as shown below), so that the plate setup of the standard is completed.



5.2 Experiment of Melting Curve

5.2.1 Setup of Melt Curve Analysis

1. Select experiment type "Melt Curve".

Experiment type	Standard Curve
Chemistry	Standard Curve
	Relative Standard Curve
	Comparative Cq (ΔΔCq)
	Melt Curve
Template type - optional	High Resolution Melt
Plastic manufacturer - optional	Genotyping
	Presence/Absence

2. Choose the used Plastic type and Chemistry.
3. Add name and optional information.
4. After the Method setting is completed, enter the Plate section, or click **Next** in the lower right corner of the page to enter the well plate setting interface.
Note: The plate setup can be set before, during, or after the reaction operation.

5. Melting Mode:

- a. For analysis of nucleic acids, select "Nucleic Acid" here
- b. For analysis of protein thermostability, select "Thermal stability assay" here

Melt mode	Nucleic Acid
Chemistry	Nucleic Acid
	Thermal stability assay

5.3 Relative Quantification Experiment ($\Delta\Delta Cq$)

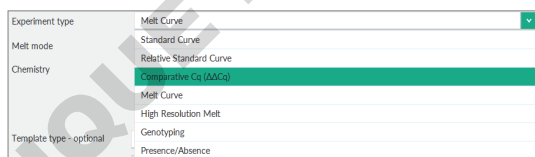
Relative quantification is suitable for most gene expression studies and can analyze the up- or down-regulation of target gene expression levels in calibrated (normal) samples and one or more experimental samples. Using this technology does not require accurate determination of copy number but focuses on multiple changes compared with calibration samples. $\Delta\Delta Cq$ method is a very common method of relative quantitative analysis, which can be used to compare the results of experimental samples, including calibrators (such as untreated or wild-type samples) and standard products (such as housekeeping gene expression), which can be used. Using this method, the target gene in the same two samples can be compared according to the Cq of the standard (normal) gene in the test sample and the calibration sample Cq , and the $\Delta\Delta Cq$ value obtained can be used to determine the multiple difference of expression.

Relative quantitative experiments are often used to:

- *Compare gene expression levels in different tissues.
- *Compare the expression level samples of genes in treated and untreated samples.
- *Compare the expression levels of genes of interest in different genetic backgrounds.
- *Analysis of the conditions of gene expression over time under specific treatment.

5.3.1 Setup of comparative Cq ($\Delta\Delta Cq$) Analysis

1. Select experiment type “Comparative Cq ($\Delta\Delta Cq$)”.



Experiment type	Melt Curve
Melt mode	Standard Curve
Chemistry	Relative Standard Curve
	Comparative Cq ($\Delta\Delta Cq$)
	Melt Curve
	High Resolution Melt
Template type - optional	Genotyping
	Presence/Absence

2. Choose the used Plastic type and Chemistry.
3. Add name and optional information.
4. After the Method setting is completed, enter the Plate section, or click **Next** in the lower right corner of the page to enter the well plate setting interface.

Note: The plate setup can be set before, during, or after the reaction operation.

5.4 Genotyping Experiments

In the study of gene variation, in order to obtain a large number of characteristic markers, a large number of individuals must be genotyped. The reasons for the differences in individual genomes at different levels include single nucleotide polymorphisms (SNP) and DNA covalent modification. more than 90% of the gene sequence variants that cause individual differences belong to single nucleotide polymorphisms (SNP). SNPs mainly refer to DNA sequence polymorphisms caused by mutations at the nucleotide level of the genome frequency of at least one allele in the population is not less than 1%, including conversion of single base, transversion and insertion and deletion of single base: in addition, changes in DNA covalent bond modifications, such as DNA methylation. Real-time fluorescence quantitative PCR can provide different methods for genotyping analysis. For the detection of known mutations, the most commonly used basic method is the end point genotyping using enzyme cleavage hydrolysis probe, and the more advanced method is the fusion curve genotyping using hybrid probe. For the detection of unknown or new mutations, saturated DNA combined with dyes is usually used to genotyping by high resolution melting curve. In this chapter we will introduce the method of allele analysis of known mutation sites using the TaqMan™ probe endpoint method. The method can be easily improved and applied to the detection of various other SNP.

Common genotyping applications:

- *Genetic identification of genetic diseases.
- * Identification of tumor susceptibility genes and hotspot mutations.
- *Identification of pathogen gene mutations and drug resistance.
- *Animal and plant forensics, breeding research.

5.4.1 Set Up of a Genotyping analysis

1. Select experiment type “Genotyping”.

Experiment type	Genotyping
Chemistry	Standard Curve
	Relative Standard Curve
	Comparative Cq ($\Delta\Delta Cq$)
	Melt Curve
	High Resolution Melt
Template type - optional	Genotyping
Plastic manufacturer - optional	Presence/Absence

2. Choose the used Plastic type and Chemistry.

Note: Genotyping experiments can only be performed using probe-based chemistry.

3. Add name and optional information.

4. After the Method setting is completed, enter the Plate section, or click **Next** in the lower right corner of the page to enter the well plate setting interface.

Note: The plate setup can be set before, during, or after the reaction operation.

5.4.2 Set Up of a High-Resolution Melt Analysis (HRM)

1. Select experiment type “High-Resolution Melt”.

Experiment type	Genotyping
Chemistry	Standard Curve
	Relative Standard Curve
	Comparative C _q ($\Delta\Delta C_q$)
	Melt Curve
	High Resolution Melt
Template type - optional	Genotyping
Plastic manufacturer - optional	Presence/Absence

2. Choose the used Plastic type and Chemistry.

Note: Genotyping experiments can only be performed using dye-based chemistry. Please use an HRM-specific saturating dye.

3. Add name and optional information.

4. After the Method setting is completed, enter the Plate section, or click **Next** in the lower right corner of the page to enter the well plate setting interface.

Note: The plate setup can be set before, during, or after the reaction operation.

5. For HRM experiments controls can be defined during the plate setup (optional).

Click **+ Add** to add controls and select wells to assign controls similar to assigning samples and targets

Controls		+ Add	Action
	Control Name		
<input type="checkbox"/>	Control 1		X

5.5 Presence / Absence Experiments

Presence / Absence experiments are endpoint experiments that can be performed to determine whether a target is present or absent in a sample. This type of experiment can be used for the detection of pathogens.

Presence / Absence experiments can only be performed using a probe-based assay and data is collected at the end. The amount of accumulated target is quantified for each sample. For quantification, the normalized intensity of the reporter dye (Rn) is used and displayed.

5.5.1 Set Up of a Presence / Absence analysis

1. Select experiment type "Presence/Absence".

Experiment type	Genotyping
Chemistry	Standard Curve
	Relative Standard Curve
	Comparative Cq ($\Delta\Delta Cq$)
	Melt Curve
Template type - optional	High Resolution Melt
Plastic manufacturer - optional	Genotyping
	Presence/Absence

2. Choose the used Plastic type and Chemistry.

Note: Presence/Absence experiments can only be performed using probe-based chemistry.

3. Add name and optional information.

4. After the Method setting is completed, enter the Plate section, or click **Next** in the lower right corner of the page to enter the well plate setting interface.

Note: The plate setup can be set before, during, or after the reaction operation.

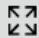







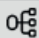



5. For Presence / Absence experiments four types of tasks can be applied to the plate setup: **U** Unknown-IPC (well contains unknown sample and IPC (internal positive control)), **P** positive control (well contains a positive control and IPC), **N** NC (negative control)-IPC (well contains no-template control and IPC) and **B** NC-blocked IPC (well contains no-template control and IPC blocking agent).

Chapter 6 Result Analysis and Data Export

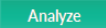
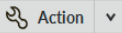

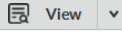
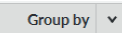

This chapter explains the data overview, analysis, and export.

6.1 Result Tab

6.1.1 Buttons in Toolbar

Button	Name	Function
	zoom in	Zoom in for plate overview and curves
	zoom out	Zoom out for plate overview and curves
	Return	return to last step
	Plate view	Plate overview for results
	List	Experiment results by list
	Send to printer	Print current window image file
	Copy	Copy current window as image file
	Save as file	Save current window as file (.jpg, .svg, .png, .emf, .pdf)
	Plot Properties	Plot properties set up
	Hide plot result	Hide plot result
	Display plot result	Display plot result
	Show plot settings	Show plot settings

6.1.2 Other Toolbars

Toolbar	Name	Function
	Analyze	Click to analysis result after changing plate or plot settings
	Action	Click to select sample or target
	Save	Save current results as .qps file
	View	View current results by plate or list format
	Group by	Click to show results by different groups
	Expand/Shrink	Expand/Shrink plate or image view

DOMINIQUE DUTSCHER SAS

6.2 Result Overview

FastGene® qFYR Analysis Studio will analyze experiment results by default settings after an experiment is finished, and show amplification plot in the Result tab.

Attention: After omitting wells or changing any settings, please click **Analyze** to obtain new results.

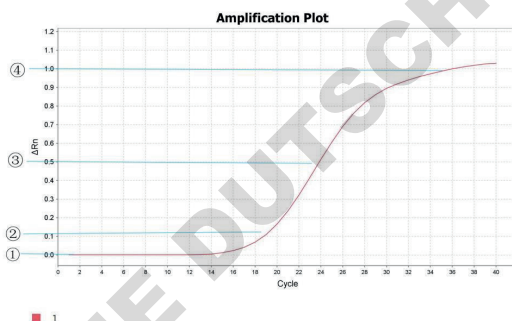
6.2.1 Amplification plot

1. Enter the Amplification plot tab to view the amplification curve.



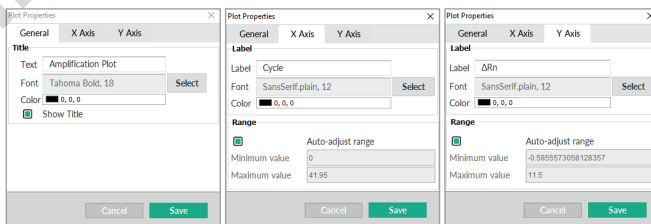
2. Overview amplification curve and evaluate curve shape. A typical amplification curve includes four different parts:

① Baseline stage ② Exponential stage ③ Linear stage ④ Plateau stage




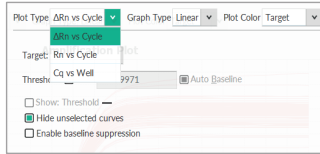
6.3.1 Plot Properties

Select **Plot**, open the Plot Properties settings. In the “General,” “X Axis,” “Y Axis” tab, you can adjust the title, name, font, color, range and much more, as shown below. Select “Save” if any adjustment is made. The adjusted curve will be shown after saving.



6.2.2 Plot Settings

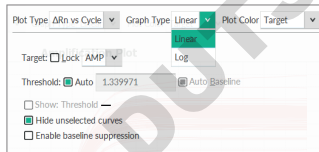
1. Select  to enter the Plotting Settings and to adjust plot type, graph type, threshold etc.



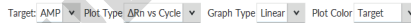
2. Use the drop-down menu to choose the Plot Type. The default setting is “Rn vs cycle”, but “ Δ Rn vs cycle”, “Cq vs well” are available as well.

Plot Type	Description	Purpose
Rn vs cycle	Rn value is the normalized fluorescence value.	Recognize and checking unnormal amplification well.
Cq vs well	Cq value is the cycle number which fluorescence signal achieved threshold.	Recognize the unnormal amplification well.

3. Graph Type can be changed from “Linear” to “Log” by using the drop-down list. The default setting is “Linear” graph.

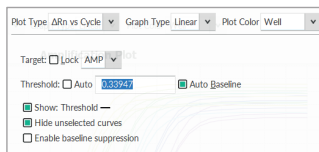


Note: Plot settings can also be adjusted using the tool bar above the graph.



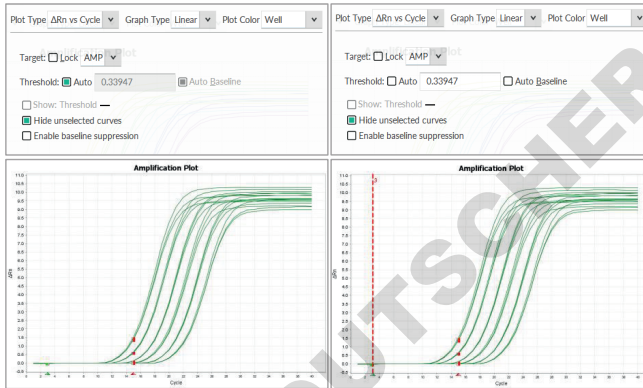
6.2.3 Threshold Settings

The software will calculate the threshold value by an automatic model. However, it can still be adjusted by unchecking “Auto” and changing the value. Additionally, the threshold line in the graph can be dragged. The new Cq value will be automatically calculated and displayed after the threshold line is adjusted. The threshold line will not be displayed if “Show Threshold” is not selected.



6.2.4 Baseline Settings

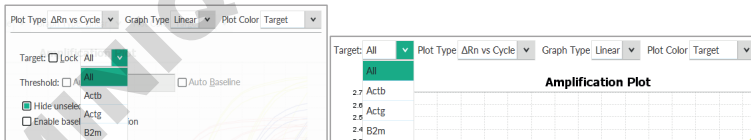
The software automatically sets the baseline in the first few cycles of the reaction, usually within 3 to 15 cycles. If you need to set the baseline manually, remove the automatic threshold check, you can drag and drop the baseline (green triangle) directly on the curve and change it within the 1st to 15th cycle. In case of an early C_q value, it is suggested that the baseline should be set in the straight area of the curve, and when the baseline setting range is too wide, fluorescence can be detected in the 10th cycle, which may cause a curve drop and C_q delay.




Note: Please do not forget to click **Analyze** after a baseline setting is changed.

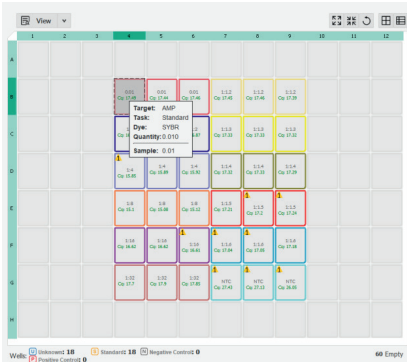
6.2.5 Target Settings

You can select different targets, or all targets to be shown:

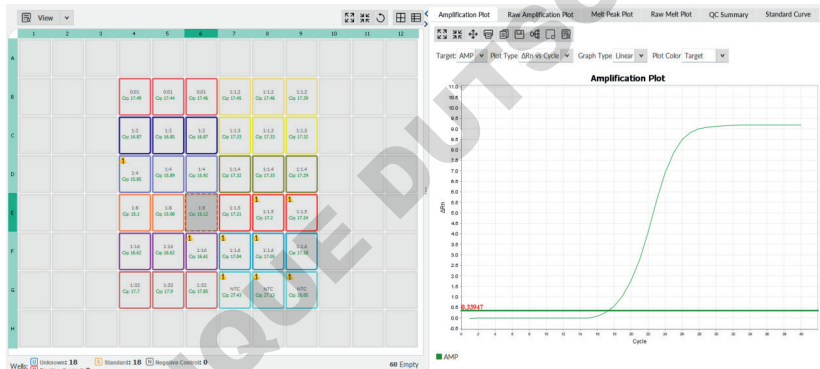


6.2.6 Results as Reaction Board




To view the results in plate format, click .



In the plate view, the information of each well (incl. target, task, dye, sample) will be showed while the mouse is moved to and paused on each well. E.g., information of well B4 as in figure above.



If a different well is selected, the amplification plot will be shown accordingly. E.g., the amplification curve of well E6 is shown after selecting well E6 in the plate format, as in the figure above.

Click buttons of Zoom in , Zoom out , Return to original size , to change the plate layout.

6.2.7 Results as List

To display the results as list, click .

All the experiment information is listed, including well, sample, target, task, Cq, Cq mean, Cq SD etc.

#	Well	Omit	Flag	Sample Na...	Target Na...	Task	Dyes	Cq	Cq Mean	Cq SD	Quantity	Qua
18	B6	<input type="checkbox"/>	✔	0.01	AMP	STAND...	SYBR	17.457	17.462	0.023	0.010	
19	B7	<input type="checkbox"/>	✔	1:1.2	AMP	UNKNO...	SYBR	17.449	17.433	0.041	0.000	
20	B8	<input type="checkbox"/>	✔	1:1.2	AMP	UNKNO...	SYBR	17.463	17.433	0.041	0.000	
21	B9	<input type="checkbox"/>	✔	1:1.2	AMP	UNKNO...	SYBR	17.385	17.433	0.041	0.000	
28	C4	<input type="checkbox"/>	✔	1:2	AMP	STAND...	SYBR	16.865	16.861	0.013	0.005	
29	C5	<input type="checkbox"/>	✔	1:2	AMP	STAND...	SYBR	16.846	16.861	0.013	0.005	
30	C6	<input type="checkbox"/>	✔	1:2	AMP	STAND...	SYBR	16.870	16.861	0.013	0.005	
31	C7	<input type="checkbox"/>	✔	1:1.3	AMP	UNKNO...	SYBR	17.326	17.327	0.004	0.000	
32	C8	<input type="checkbox"/>	✔	1:1.3	AMP	UNKNO...	SYBR	17.332	17.327	0.004	0.000	
33	C9	<input type="checkbox"/>	✔	1:1.3	AMP	UNKNO...	SYBR	17.323	17.327	0.004	0.000	
40	D4	<input type="checkbox"/>	⚠	1:4	AMP	STAND...	SYBR	15.847	15.887	0.037	0.002	
41	D5	<input type="checkbox"/>	✔	1:4	AMP	STAND...	SYBR	15.892	15.887	0.037	0.002	
42	D6	<input type="checkbox"/>	✔	1:4	AMP	STAND...	SYBR	15.921	15.887	0.037	0.002	
43	D7	<input type="checkbox"/>	✔	1:1.4	AMP	UNKNO...	SYBR	17.318	17.312	0.017	0.000	
44	D8	<input type="checkbox"/>	✔	1:1.4	AMP	UNKNO...	SYBR	17.325	17.312	0.017	0.000	
45	D9	<input type="checkbox"/>	✔	1:1.4	AMP	UNKNO...	SYBR	17.294	17.312	0.017	0.000	
52	E4	<input type="checkbox"/>	✔	1:8	AMP	STAND...	SYBR	15.100	15.102	0.019	0.001	

The list can be grouped by the following:

Group by ▼

- Target Name
- Sample Name
- Task
- Replicate
- Dye
- Flag
- Cq
- Tm1
- Well Position (Row)
- Well Position (Column)
- ✓ None

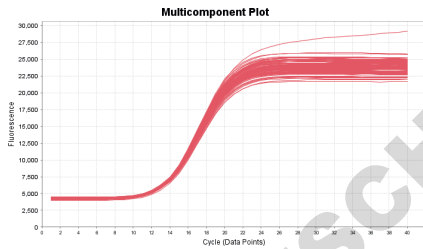
Please note that sections 6.3.1 to 6.2.7 can be applied to all subsequent plot types.

6.2.8 Raw Amplification Plot and Raw Melt Peak Plot

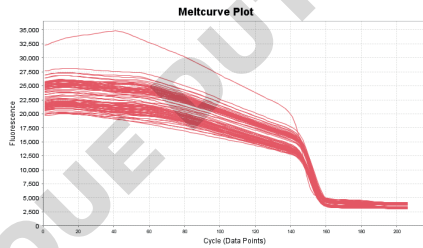
Raw plots present the real time fluorescence signal change. The cycle number is shown on the X-Axis while the fluorescence signal value is plotted on the Y-Axis.

Raw Melt Plot	Melt Peak Plot	QC Summary	Gene Expression
Amplification Plot		Raw Amplification Plot	
Amplification Plot		Raw Amplification Plot	
Raw Melt Plot	Melt Peak Plot	QC Summary	Gene Expression

By entering the corresponding tabs multicomponent plots for the amplification stage or for the melt curve step will be shown.



■ SYBR



■ SYBR

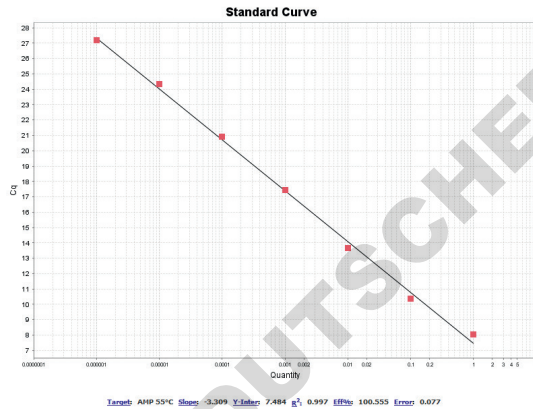
6.2.9 Standard Curve

Standard curves can be used to verify the amplification efficiency of comparative Cq experiments or to perform an absolute quantitative PCR experiment.

1. Click Standard Curve

Amplification Plot		Raw Amplification Plot	
Melt Peak Plot	Raw Melt Plot	QC Summary	Standard Curve

2. View standard



Note: The amplification efficiency (Eff%), slope, Y-Intercept, R² and Error will be shown below the graph. A slope of -3.2~-3.5, a R²>0.99 and an Efficiency of 90 to 110% are indicators of a reliable experiment.

3. The default mode shows red dots as standard samples, while blue and green are unknown samples.

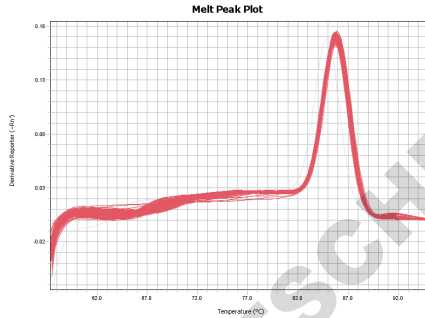
6.2.10 Melt Curve

The melt curve shows the reduction in fluorescence caused by the denaturation of the DNA double helix during the final slow heating step (melt curve analysis).

1. Enter Melt curve plot in the menu.



2. View derivative of the melt curve fluorescence plot

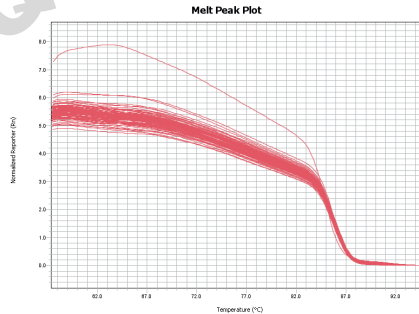


Note: Melt curve plot is applied to check the specificity of PCR reaction and products: Two or more peaks are indicators of an unspecific amplification or of multiple amplicons.

3. Change the plot configurations



Note: The "Derivative reporter" plot displays the first derivative of fluorescence signal change according to the temperature. The T_m (Temperature of melt, the temperature of 50% of dsDNA unwinding to ssDNA) could be used to detect unspecific amplification and primer dimer.



The "Normalized reporter plot" displays the fluorescence signal value decreasing as temperature rises.

6.2.11 Gene Expression Map

Gene expression maps can be used to view the results of relative quantitation calculations and the gene expression profile.

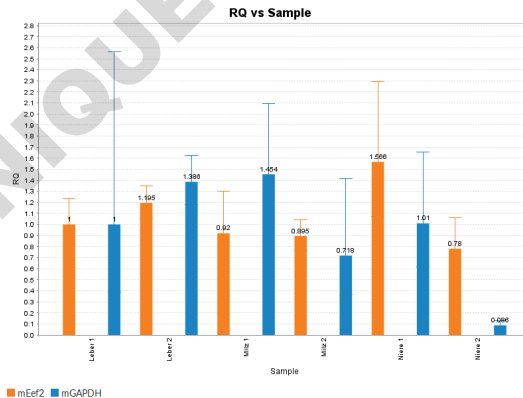
1. Click Gene Expression

Amplification Plot		Raw Amplification Plot	
Raw Melt Plot	Melt Peak Plot	QC Summary	Gene Expression

2. All sample information is shown in the selected table

#	Omit	Sample	Target ¹	Cq Mean	Δ Cq Mean	Δ Cq SE	$\Delta\Delta$ Cq	RQ	RQ Min	RQ Max
1	<input type="checkbox"/>	Leber 1	mACTB	20.207						
2	<input type="checkbox"/>	Leber 2	mACTB	20.08						
3	<input type="checkbox"/>	Mlz 1	mACTB	18.899						
4	<input type="checkbox"/>	Mlz 2	mACTB	19.233						
5	<input type="checkbox"/>	Niere 1	mACTB	19.644						
6	<input type="checkbox"/>	Niere 2	mACTB	21.688						
7	<input type="checkbox"/>	Leber 1	mEef2	20.032	-0.175	0.111	0	1	0.808	1.237
8	<input type="checkbox"/>	Leber 2	mEef2	19.648	-0.432	0.064	-0.257	1.195	1.058	1.351
9	<input type="checkbox"/>	Mlz 1	mEef2	18.845	-0.055	0.18	0.12	0.92	0.65	1.301
10	<input type="checkbox"/>	Mlz 2	mEef2	19.218	-0.016	0.08	0.159	0.895	0.767	1.045
11	<input type="checkbox"/>	Niere 1	mEef2	18.822	-0.822	0.198	-0.647	1.566	1.07	2.291
12	<input type="checkbox"/>	Niere 2	mEef2	21.872	0.184	0.159	0.359	0.78	0.574	1.059
13	<input type="checkbox"/>	Leber 1	mGAPDH	26.103	5.896	0.489	0	1	0.39	2.564
14	<input type="checkbox"/>	Leber 2	mGAPDH	25.506	5.425	0.002	-0.47	1.386	1.183	1.623
15	<input type="checkbox"/>	Mlz 1	mGAPDH	24.255	5.355	0.19	-0.54	1.454	1.008	2.098
16	<input type="checkbox"/>	Mlz 2	mGAPDH	25.606	6.373	0.353	0.477	0.718	0.364	1.416
17	<input type="checkbox"/>	Niere 1	mGAPDH	25.525	5.981	0.257	-0.014	1.01	0.616	1.657
18	<input type="checkbox"/>	Niere 2	mGAPDH	31.116	9.428	0.208	3.533	0.086	0.058	0.129

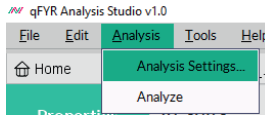
3. Check the gene expression map:



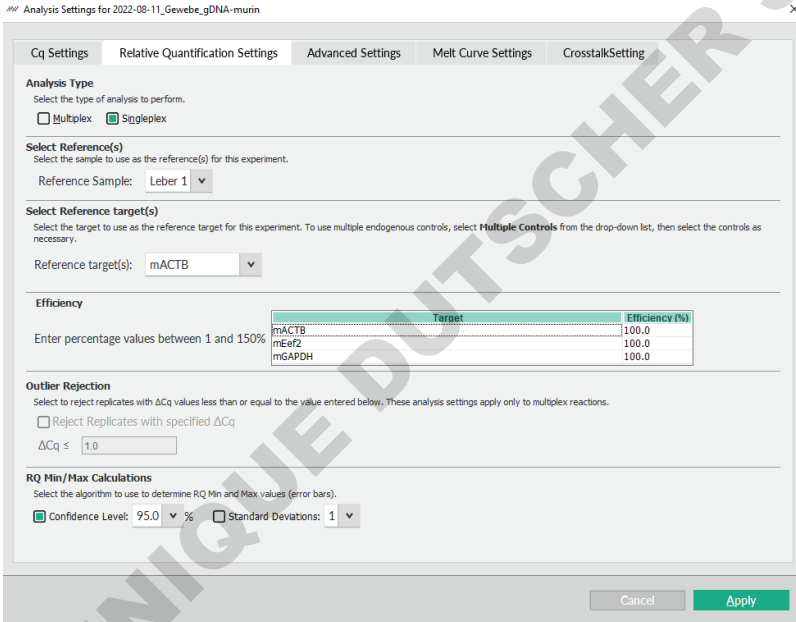
Note: There are two plot types available: RQ vs Target (relative quantitation (RQ) values are grouped by target), and RQ vs Sample (relative quantitation (RQ) values are grouped by sample).

6.2.12 Analysis Settings

General Analysis settings can be changed by entering the Analysis settings in the menu toolbar:



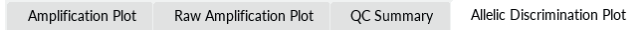
Enter the tab Relative Quantification Settings to edit settings used for relative quantification of data, such as References, Efficiency of used primers, Outlier Rejection and RQ Min/Max calculations.



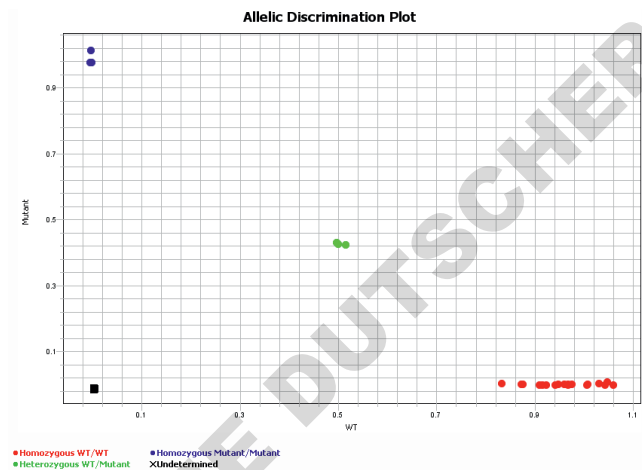
6.2.13 Genotyping Maps

The allelic discrimination plot clusters the normalized reporter fluorescence (Rn) of the allele-specific probes used in the SNP assay for the three possible genotypes (Allele 1 homozygous, Allele 2 homozygous, and Allele 1/2 heterozygous) as well as for negative controls (undetermined)

1. Click the allele identification map.



2. Check the allele identification map.

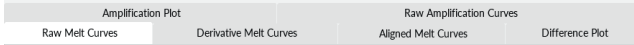


3. The allele identification map, the colors of different samples and the allele types represented by each color will be displayed.

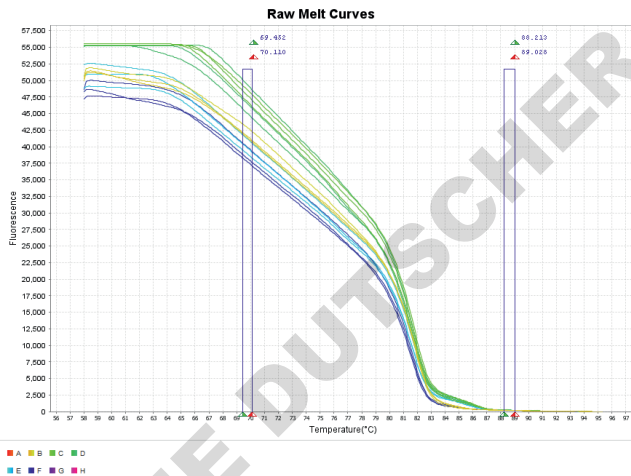
6.2.14 Raw Melt Curves of the High-Resolution Melt analysis

The melt profile of a high-Resolution Melt analysis (HRM) reflects the mix of amplicons present in the sample. Variations in sample characteristics like GC content, length, sequence, and heterozygosity are defining the melt curve characteristics of each amplicon.

1. Click the Raw Melt curves tab.



2. Check the raw melt curves.



3. The software automatically defines the pre- and post-melt regions by pairs of vertical bars before and after the active melt region. If you need to set the regions manually, you can drag and drop the vertical bars of each region directly on the curve. The area between the pair of bars to the left of the active melt region is used to designate 100% fluorescence, where all amplicons are double-stranded. Respectively, the area between the bars to the right of the active melt region is used to determine 0% fluorescence, where all amplicons are single-stranded.

Note: Please do not forget to click **Analyze** after melt-region setting is changed.

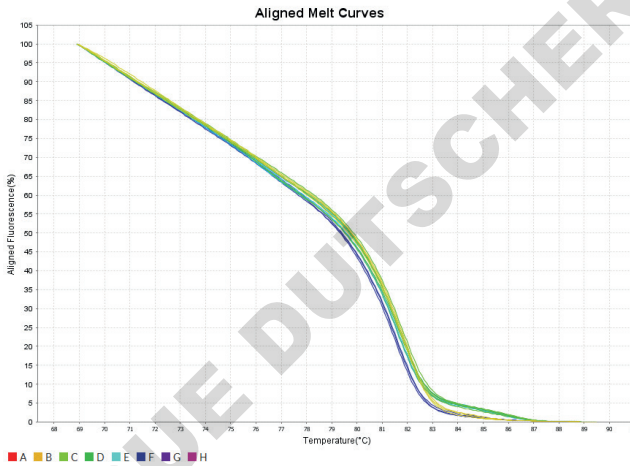
6.2.15 Aligned Melt Curves of the High-Resolution Melt analysis

During HRM two types of melt curves can be observed. On the one hand, melt curves that differ from each other in melting temperature (T_m) of the amplicon, but are similar in curve shape. Usually, this kind of curve is generated by homozygous variant samples. On the other hand, melt curves that differ in shape from homozygote melt curves usually indicate heterozygous samples due to the presence of base-pairing mismatches (heteroduplexes) present in the PCR product mix.

1. Click the Aligned Melt curves tab



2. Check the raw melt curves



Note: A scaled view of the data is displayed in the aligned plot. Sequence variants with differences in their melt curve (e.g., homozygous vs. heterozygous variants) can be easily discriminated.

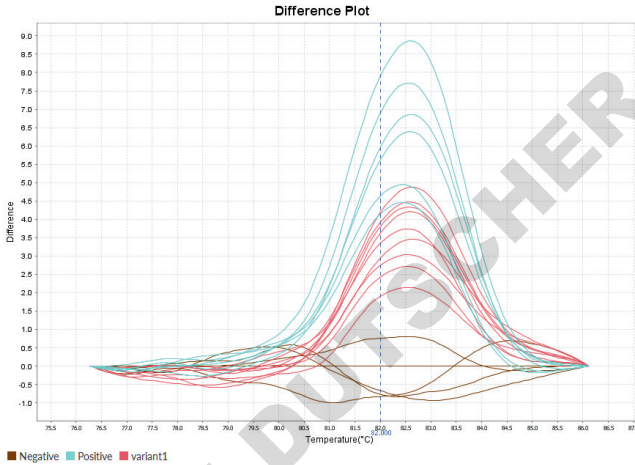
6.2.16 Difference plot of the High-Resolution Melt analysis

The difference plot is a tool to easily visualize small differences in melt curves of HRM analysis. Curves displayed here are generated by the differences between samples and a single reference.

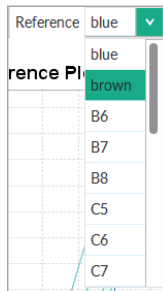
1. Click the Difference Plot tab.



2. Check the difference plot.

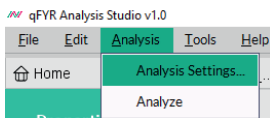


3. References can be changed by using the drop-down menu and can be either pre-defined controls or single wells.

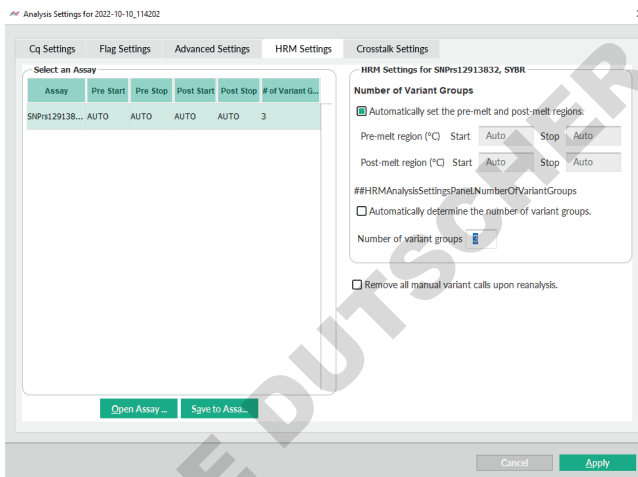


4. The default number of variants in the software pre-set is three. If the actual number of variants is less, any slight difference among the replicates may lead the replicates of one

sample to be divided into different variation groups, even if they have similar curve characteristics. Default settings can be changed by opening the analysis settings in the menu toolbar.



In the tab “HRM Settings” uncheck “Automatically determine the number of variant groups” and enter the desired number. Confirm by clicking **Apply**.



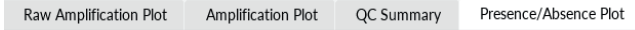
Settings can be saved as default for future experiments using this SNP assay by clicking **Save to Assa...** or opened from previous experiments by clicking **Open Assay ...**.

Note: Please do not forget to click **Analyze** after HRM setting is changed.

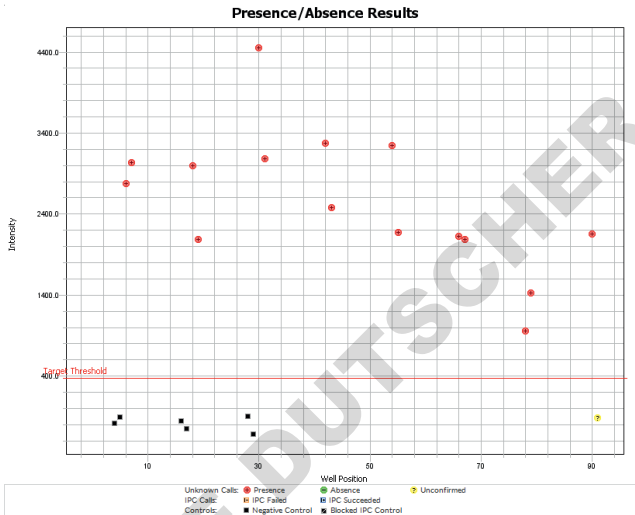
6.2.17 Presence/Absence Plot

The Presence/Absence plot display the fluorescence intensity measured in each well.

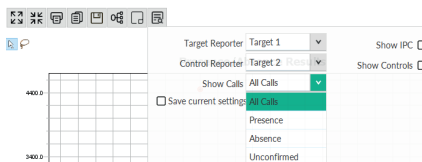
1. Enter the Presence/Absence plot tab.



2. Check the Presence/Absence results.



3. There are 4 types of plot views that can be chosen in the Plot settings: “All calls” – all calls are displayed, “Presence” – only samples where the target is present are displayed, “Absence” – only samples where the target is absent are displayed, and “Unconfirmed”, only unconfirmed samples are displayed. Additionally, you can choose to display fluorescence intensity of the IPC target (“Show IPC”) as well as fluorescence intensity of the IPC target in Negative Control-IPC wells and Negative Control-Blocked IPC wells (“Show Controls”).



4. The software is calculating two types of thresholds for the Presence/Absence plot that are used for the call:
 - The “IPC Threshold” is calculated from Negative Control- Blocked IPC reactions.
 - The “Target Threshold” is calculated from Negative Control- IPC reactions.

- Targets are called regarding their fluorescence intensity:
 - Call is present if fluorescence intensity is higher than the target threshold,
 - Call is absent if fluorescence intensity is lower than the target threshold, and fluorescence intensity of the IPC is higher than the IPC threshold,
 - Call is unconfirmed if fluorescence intensity is lower than the target threshold, and fluorescence intensity of the IPC is lower than the IPC threshold.

6.2.18 QC Summary

The QC Summary screen displays a list of defined experiment flags, including the flag frequency and location of flagged wells for the experiment.

1. Enter the QC Summary tab.

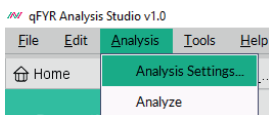


2. Check the quality of results.

Flag:	Description	Frequency	Wells
AMPNC	Amplification in negative control	0	
DRNMBN	Define acceptable delta Rn based on Cq range	0	
OFFSCALE	Fluorescence is offscale	0	
HIGHSD	High standard deviation in replicate group	0	
CQCONF	Low Cq confidence	0	
NOAMP	No amplification	0	
NOISE	Noise higher than others in plate	0	
SPIKE	Noise spikes	0	
NOSIGNAL	No signal in well	0	
OUTLIERRG	Outlier in replicate group	0	
EXPFAIL	Exponential algorithm failed	0	
BLFAIL	Baseline algorithm failed	0	
THOLDFAIL	Thresholding algorithm failed	0	
CQFAIL	Cq algorithm failed	0	
MTP	Multiple Tm peaks	10	C1, C3, D2, E2, E9, F2, F10, G1,...

Total Wells:	96	Processed Wells:	96	Manually Omitted Wells:	0	Targets Used:	1
Wells Set Up:	96	Flagged Wells:	10	Analysis Omitted Wells:	0	Samples Used:	1

Note: For some experiment types QC settings can be changed by entering the analysis settings in the menu toolbar:



Analysis Settings for 2022-11-07_103951

Call Settings Cq Settings **Flag Settings** Advanced Settings

Flag	Description	Use	Attribute	Condition	Value	Reject Well
OFFSCALE	Fluorescence is offscale	<input checked="" type="checkbox"/>				<input type="checkbox"/>
NOSIGNAL	No signal in well	<input type="checkbox"/>	Threshold	=	▼ 100000.0	<input type="checkbox"/>
PCFAIL	Positive control failed	<input checked="" type="checkbox"/>				<input type="checkbox"/>
SMCLUSTER	Small number of samples in cluster	<input checked="" type="checkbox"/>	Number of data points in the cluster	≤	▼ 2.0	<input type="checkbox"/>
AMPNC	Amplification in negative control	<input checked="" type="checkbox"/>	Cq	<	▼ 35.0	<input type="checkbox"/>
DRNMIN	Define acceptable delta Rn based on Cq range	<input checked="" type="checkbox"/>	Cq	=	▼ 35.0	<input type="checkbox"/>
DRNMIN	Define acceptable delta Rn based on Cq range	<input checked="" type="checkbox"/>	ΔRn	=	▼ 0.2	<input type="checkbox"/>
CQCONF	Low Cq confidence	<input checked="" type="checkbox"/>	Cq Confidence	<	▼ 0.8	<input type="checkbox"/>
NOAMP	No amplification	<input checked="" type="checkbox"/>	Amplification algorithm result	<	▼ 0.1	<input type="checkbox"/>
NOISE	Noise higher than others in plate	<input checked="" type="checkbox"/>	Relative noise	>	▼ 4.0	<input type="checkbox"/>
SPIKE	Noise spikes	<input checked="" type="checkbox"/>	Spike algorithm result	>	▼ 1.0	<input type="checkbox"/>
EXPFAIL	Exponential algorithm failed	<input checked="" type="checkbox"/>				<input type="checkbox"/>
BLFAIL	Baseline algorithm failed	<input checked="" type="checkbox"/>				<input type="checkbox"/>
THOLDFAIL	Thresholding algorithm failed	<input checked="" type="checkbox"/>				<input type="checkbox"/>
CQFAIL	Cq algorithm failed	<input checked="" type="checkbox"/>				<input type="checkbox"/>

Cancel Apply

Confirm by clicking **Apply** and click **Analyze** after Flag setting is changed.

6.3 Data Export

6.3.1 Toolbars in Export Tab

Toolbars	Name	Function
	Export	Export data
	Save	Save as .qps file

6.3.2 Data Export

1. File name: The default file name is the name defined in “Plot properties” or could be changed to customized name. English characters are supported, but not special characters.

File Name

2. Export content: Include sample setup, Amplification data, Multicomponent data, Results, Melt Curve Result. The contents can be selected by box checking.

Content

Sample Setup Amplification Data
 Multicomponent Data Results
 Melt Curve Result
Melt Curve Stage: Stage 3

3. The default option is “Unify above content into one file”, which will be included as different sheets in one excel file. To export single files, choose “Split above content items into individual files”.
4. File type: Select QPCR and .xls, .txt or .csv.

File Type

Location

(*.xls)
 (*.txt)
 (*.csv)

5. File Location: The default file location is desktop, which can be changed to other file location by click
6. File Export: The experiment result will be saved and opened in Excel automatically after clicking

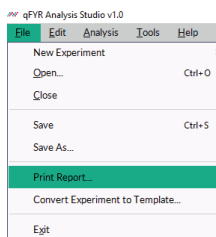
7. The export is shown in Excel as below.

AI	Qtelemetry																															
A	B	C	D	E	F	G	H	I	J	K	L	M	N	O	P	Q	R	S	T	U	V	W	X	Y	Z	AA	AB	AC				
1	Comment																															
2	Unit Content	Date Recv																														
3	Experiment Comment	2023-08-14 10:37:23 AM CET																														
4	Experiment Name	L:W&E:Epigenetic Kinase Receptor Hood and Tissue:gtRNA NC0202:08-11 Test 31:qtPCR0202:08-16_Test RNA hu_mrn_1_1.qpt																														
5	Experiment Date	2023-08-14 10:40:18 AM CET																														
6	Experiment Run End Time	2023-08-16 16:21:43 PM CET																														
7	Experiment Run Start Time	2023-08-14 11:30:58 PM CET																														
8	Experiment Type	Standard Curve																														
9	Instrument Serial Number	AG642420068																														
10	Instrument Type	FastGene qPCR-36																														
11	Lab Temperature	19.5																														
12	Plate manufacturer	P019260																														
13	Plate read temperature																															
14	Plate read target plate																															
15	Quantification Cycle Method	Cq																														
16	Sample Volume	100																														
17	Sealing method	Adhesive																														
18	Signal Amplification On	Yes																														
19	Software version	1.0																														
20	Stage when Multi-Analysis is performed	Stage3																														
21	Stage Cycle when Cq Analysis is performed	Stage2																														
22	Sample type	gtRNA																														
23	Unit Name																															
24	Unit	Well	Flood	Out	Sample Name	Target	Task	Source	Cq	Cq Mean	Cq SD	Quantity	Quantity	Quantity	S ²	Intercept	Fluorescence	Slope	Efficiency	Automatic	Cq Threshold	Automatic	BleedIn	E Baseline	E Amp	Rate	Comment	Cq Conf	Results	ABRPC	DOBHH	Test
25	1 A1	FALSC	empty	NTC	SV18	Undetermined	10.786													FALSC	1.012	WARN	3	10	Incomplete				N	N		
26	1 A2	FALSC	empty	NTC	SV18	Undetermined	10.786													FALSC	1.012	WARN	3	10	Incomplete				N	N		
27	1 A3	FALSC	empty	NTC	SV18	Undetermined	10.786													FALSC	1.012	WARN	3	10	Incomplete				N	N		
28	1 A4	FALSC	empty	NTC	SV18	Undetermined	10.786													FALSC	1.012	WARN	3	10	Incomplete				N	N		
29	1 A5	FALSC	empty	NTC	SV18	Undetermined	10.786													FALSC	1.012	WARN	3	10	Incomplete				N	N		
30	1 A6	FALSC	empty	NTC	SV18	Undetermined	10.786													FALSC	1.012	WARN	3	10	Incomplete				N	N		
31	1 A7	FALSC	empty	NTC	SV18	Undetermined	10.786													FALSC	1.012	WARN	3	10	Incomplete				N	N		
32	1 A8	FALSC	empty	NTC	SV18	Undetermined	10.786													FALSC	1.012	WARN	3	10	Incomplete				N	N		
33	1 A9	FALSC	empty	NTC	SV18	Undetermined	10.786													FALSC	1.012	WARN	3	10	Incomplete				N	N		
34	1 A10	FALSC	empty	NTC	SV18	Undetermined	10.786													FALSC	1.012	WARN	3	10	Incomplete				N	N		
35	1 A11	FALSC	empty	NTC	SV18	Undetermined	10.786													FALSC	1.012	WARN	3	10	Incomplete				N	N		
36	1 A12	FALSC	empty	NTC	SV18	Undetermined	10.786													FALSC	1.012	WARN	3	10	Incomplete				N	N		
37	1 B1	FALSC	120ng	ACTB	STANDARD SV18	Undetermined	10.786													FALSC	1.012	WARN	3	10	Incomplete				N	N		
38	1 B2	FALSC	120ng	ACTB	STANDARD SV18	14.622	14.951	0.230	120.000	120.000		19.895	0.960	-2.750	131.048	FALSC	1.081	WARN	3	10	Complete	Y	0.0	0.0	0.0				N	N	87.348	
39	1 B3	FALSC	120ng	ACTB	STANDARD SV18	14.528	14.951	0.230	120.000	120.000		19.895	0.960	-2.750	131.048	FALSC	1.081	WARN	3	10	Complete	Y	0.0	0.0	0.0				N	N	87.150	
40	1 B4	FALSC	120ng	ACTB	STANDARD SV18	14.636	14.951	0.231	120.000	120.000		19.895	0.960	-2.750	131.048	FALSC	1.081	WARN	3	10	Complete	Y	0.0	0.0	0.0				N	N	87.188	
41	1 B5	FALSC	120ng	ACTB	STANDARD SV18	14.395	14.951	0.230	120.000	120.000		19.895	0.960	-2.750	131.048	FALSC	1.081	WARN	3	10	Complete	Y	0.0	0.0	0.0				N	N	87.135	
42	1 B6	FALSC	120ng	ACTB	STANDARD SV18	14.667	14.951	0.230	120.000	120.000		19.895	0.960	-2.750	131.048	FALSC	1.081	WARN	3	10	Complete	Y	0.0	0.0	0.0				N	N	87.564	
43	1 B7	FALSC	120ng	ACTB	STANDARD SV18	14.620	14.951	0.230	120.000	120.000		19.895	0.960	-2.750	131.048	FALSC	1.081	WARN	3	10	Complete	Y	0.0	0.0	0.0				N	N	87.151	
44	1 B8	FALSC	120ng	ACTB	STANDARD SV18	14.536	14.951	0.230	120.000	120.000		19.895	0.960	-2.750	131.048	FALSC	1.081	WARN	3	10	Complete	Y	0.0	0.0	0.0				N	N	87.474	

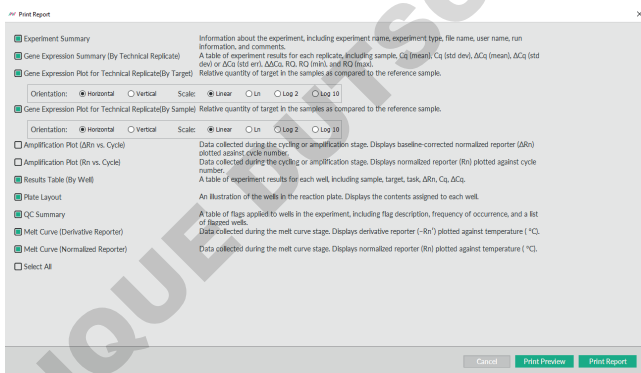
6.3.3 Printed report

Next to data export, a report of the complete data for an experiment, including graphs, can be saved, and printed.

1. In the result section, select the wells that should be reported
2. Access the main menu toolbar, enter the "File" drop down and click "Print Report"



3. A pop-up menu will open to select the data and graphs to be reported



4. Report can either be directly send to a connected printer by clicking **Print Report** or previewed and saved by clicking **Print Preview**.
5. "Print Preview" will open a new pop up and document can be reviewed and saved or printed. File format for saving is *.pdf and file can be password-secured.



qPCR Analysis Sub01110

Experiment Results Report

2022-09-28_uniformity_AMP

Experiment Summary

File Name: 2022-09-28_uniformity_AMP.qpr
Experiment Type: Comparative Cq (AA/Cq)
Run Started: 09-28-2022 09:11:08 CEST
Run Finished: 09-28-2022 11:34:33 CEST
Number of Wells Used: 96
Number of Wells with Results: 96
Instrument Type: FastGene qYR-X8
Instrument Serial Number: AX9EA21A20006
Stage/Step for analysis: Stage2_Step2
Comments:
Quantification Cycle Setting: Cq

User:1 / 12File Path: \\146-2022\13\0555\GET

DOMINIQUE DUTSCHER SAS

Chapter 7 Instruments Maintenance

This instrument does not need a lot of maintenance in case of routine use. If this instrument is used for a long time, it is necessary to clean and maintain the instrument regularly to ensure normal instrument operation. Before cleaning the instrument, please read this chapter carefully. A correct maintenance and cleaning help to prolong the instrument's service life.

If you need to replace any instrument parts during the maintenance, please contact us for professional technical confirmation, and only replace the parts provided by our original factory or our official license agency.

7.1 Instrument Cleaning

Do not clean or maintain the instrument during electrification or operation.

Do not pour water or other solutions into the sample bin, sample module or any instrument component. When the instrument is electrified, the flow of liquid may lead to electric shock!

70% medical disinfectant alcohol is recommended for instrument cleaning and disinfectant. However, ethanol is a volatile liquid. Exposure can irritate the eyes, skin, and respiratory tract, and can lead to central nervous system dysfunction and liver damage. When cleaning with ethanol, please wear suitable protective goggles, clothing, and gloves.

Note: If the instrument user has any questions about the compatibility of disinfectants or cleaning solution with the materials contained in the equipment parts, please consult the manufacturer or official license agency.

During operation, the sample module may have high temperature. Before cleaning or maintaining, wait for the temperature to drop to room temperature to avoid scalding.

Biological Hazards

Please treat and operate all samples as potential biological hazards. If liquid samples overflow or splatter, please immediately take appropriate disinfectants for disinfection, to avoid contamination or damage to laboratory personnel.

Do not deal with and operate any potential biological hazards without any safety precautions.

7.1.1 Cleaning the Instrument

Turn off the instrument and unplug the power cord.

Use a damp soft cloth to clean the instrument shell, use a mild cleaner to clean if necessary.

Note: Do not spray the cleaner directly on the instrument, which may cause the failure of the electronic instrument.

Please avoid using strong acid and alkali, more than 75% concentrated alcohol, organic solvents or strong detergent and other cleaning disinfectants to clean the instrument without our company's permission, it will destroy the surface coating.

7.1.2 Clean Sample-tray and Reaction-holes

Please close the instrument and open the sample bin.

Use damp soft cloth to clean the sample tray, use mild detergent to clean it if necessary.

Please clean the reaction hole regularly, to ensure that the consumable test tube is in full contact with the reaction hole and the heat conduction is perfect.

Use cotton swabs dipped in mild detergent to clean the reaction hole.

Please close the heat cover after sample tray and reaction hole are completely dry. The reaction module with detergent on the heating surface may damage the instrument.

Do not spray the cleaner directly on the instrument, which may cause the failure of the electronic instrument.

7.2 Instrument maintenance

7.2.1 Keep Air-Circulation

The instrument must be positioned with a possibility of free air circulation to ensure accuracy of the target temperature. Please check the placement area regularly to ensure a free air circulation, and no items that can affect the air flow.

7.2.2 Keep Stable Electricity Supply

A stable power supply is required for the normal operation, please check it regularly to ensure that the supply voltage is consistent with the voltage requirement ($\pm 10\%$ deviation is allowed). Ensure that the power outlet rated load is not less than the instrument requirement.

7.2.3 Keep Clean

Sample tray, reaction modules and optical components contaminations may interfere with thermal cycling and data collection. Please refer to the following instructions to avoid contamination of this instrument:

Make sure the outside of the plates or tubes is clean before adding them to the instrument.

Please clean the reaction module and inner cover regularly, to prevent accumulation of dirt, biological hazards, or fluorescent solvents.

Please confirm the seal of the tubes or plates before running the reaction.

Do not put open reaction consumables or damaged lids into the sample tray. The reagent may leak out and cover the hot-lid surface, sample tray and reaction hole.

Do not run PCR reactions containing volatile reagents, which may lead to contamination in the hot-lid, sample tray and reaction hole.

When this instrument is not used for a long time, please unplug and cover with soft cloth or dustproof bag to prevent dust from entering.

7.2.4 Waste Disposal

After each experiment, there is a large number of amplified products in the test tube, which should be treated as soon as possible according to relevant regulations, to avoid contamination of laboratories and instruments.

Do not open the test tube cap after removing from the reaction module! The high concentration of nucleic acid might pollute the laboratory.

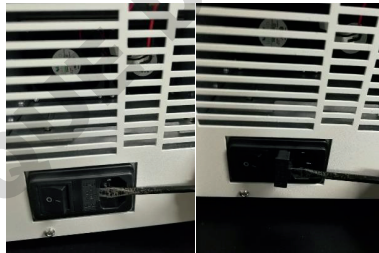
7.2.5 Fuse Replacement

When the circuit fails or is abnormal, current increase or rising of the current may damage important components. If the fuse is installed correctly, the fuse will break when the current rises to a certain height and heat, to protect the instrument or the user.



FastGene® qFYR Real-Time PCR System are equipped with two 10 A. When the fuse is damaged, the user can replace the fuse as follows:

- Cut off the mainframe power supply and unplug the power cord
- Open the fuse box lid with a screwdriver
- Check the inner fuse tube. If the middle is disconnected (two or one of them), it means that the fuse is broken
- Replace the new fuse tube (fuse type $\Phi 5 \times 20$ mm -T10AH250VP)
- Install the replaced fuse seat under the socket.
- **Note:** Power must be turned off and removed before replacing fuse.



7.2.6 Overheating Protection

The instrument heating system is equipped with overheating protection. When the heating system fails and the temperature value exceeds the upper limit of the allowable range, the protection will automatically disconnect, and cannot be restored. At this time, the heating system cannot continue to rise and cool normally. After the heating system broke down, user should stop using the instrument, contact the manufacturer for maintenance in time.

Chapter 8 Troubleshooting

- a) **Observation:** Switch on the instrument, but no reaction, and power light off.

Possible cause: Inconsistent connection with power cable

Recommended action: Switch off the power on the rear of instrument, re-plug power cable.



Inconsistent plug

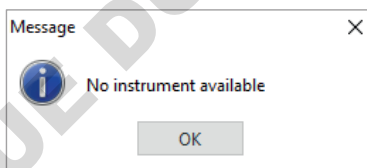


correct plug

- b) **Observation:** Shows "No Available Instrument" after click "Start Run".

Possible cause: Inconsistent connection between instrument and computer.

Recommended action: Unplug and plug the USB data cable again, re-start qFYR Analyzer Studio.



Inconsistent data cable



correct connection

- c) **Observation:** There is no fluorescence signal appearing on "Multicomponent plot", while the sound of scanning can be heard.

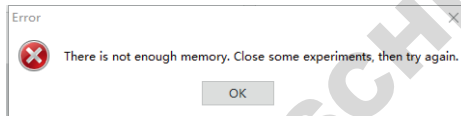
Possible cause: The "sample" and "target item" columns on the "well-plate setup" interface are not filled in. The fluorescence signal is displayed before filled in both. If the user does not fill in "sample" or "target item", the instrument will collect and store the fluorescence signal of all channels in 96 wells in the experimental file, but not display them on the experimental interface. It can be displayed after the user completes the "well plate setting" information.

Recommended action: Return to Plate Tab, complete the "Sample" and "Target" information.

- d) **Observation:** Error notice of "Not enough memory, please close some experiment".

Possible cause: Too many experiment files are opened.

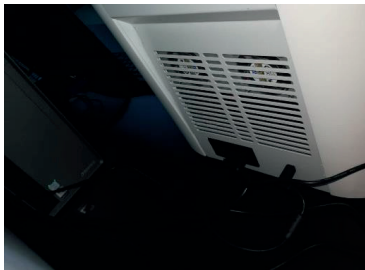
Recommended action: Closed some inactive experiments, the error notice will be closed. It is recommended No more than six experiment files are opened simultaneously.



- e) **Observation:** The ramp rate slowed down obviously.

Possible cause: The outlet of airflow was blocked.

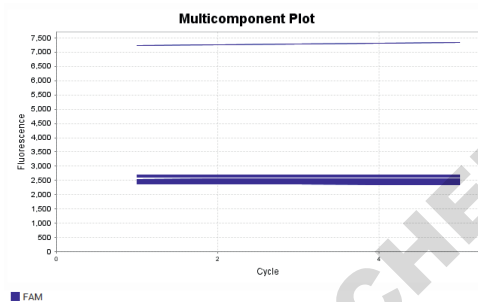
Recommended action: Clean the tamper on inlet and/or outlet of airflow.



f) **Observation:** While scanning empty block, background signal of some wells is much higher than average.

Possible cause: There are contamination in these wells.

Recommended action: Clean the contamination, please refer to Section 5.3 Monthly maintenance.



g) **Observation:** Reaction reagent been evaporated

Possible cause: The tubes or seal on plate are not closed correctly.

Recommended action: Select better air-tight consumables and restart experiment.

Note: If the user cannot judge and troubleshoot the above, contact our company directly.

If the following circumstances occur, the power supply should be cut off immediately, contact the supplier or our company, we will assign qualified maintenance personnel to handle:

- Liquid flows inside the instrument.
- Instruments be rained or watered.
- The instrument has any abnormal sound or smell.
- Damage to the shell caused by instrument drop down.
- Instrument function changes obviously.

DOMINIQUE DUTSCHER SAS

DOMINIQUE DUTSCHER SAS

NIPPON Genetics EUROPE GmbH

Production Permit Number:

Product Registration Certificate No./ Product Technical Requirements No.:

Production Enterprise: NIPPON Genetics EUROPE GmbH

Address: Mariaweilerstraße 28-30 | 52349 | Düren |Germany

Tel: +49 2421 554960

Web: www.nippongenetics.eu

DOMINIQUE DUTSCHER SAS

DOMINIQUE DUTSCHER SAS

DOMINIQUE DUTSCHER SAS

Referenznr.

NIPPON Genetics EUROPE GmbH

✉ +49 2421 554960 📞 info@nippongenetics.de
📠 +49 2421 55496 11 🌐 www.nippongenetics.eu

