

## BlueStar PLUS Prestained Protein Marker (Cat. No. MWP04 Size: 500 µl)

We recommend to use 3 µl or 5 µl per loading for clear visualization during electrophoresis on 15-well or 10-well mini-gels. For Western Blot experiments we recommend to use 1.5~2.5 µl per well.

If you like to use thicker (>1.5 mm) or larger gel, please apply more of the **BlueStar PLUS Prestained Protein Marker**.

### Description

The **BlueStar Plus Prestained Protein Ladder** is a three-color protein standard with 12 pre-stained proteins covering a wide range molecular weights from 10 to 245 kDa. Proteins are covalently coupled with a blue chromophore except for two reference bands (one green and one red band at 25 kDa and 75 kDa respectively) when separated on SDS-PAGE (Tris-glycine buffer). The **BlueStar Plus Prestained Protein Ladder** is designed for monitoring protein separation during SDS-polyacrylamide gel electrophoresis, verification of Western transfer efficiency on membranes (PVDF, nylon, or nitrocellulose) and for approximating the size of proteins. The ladder is supplied in gel loading buffer and is ready to use.

### Contents

Approximately 0.1~0.4 mg/ml of each protein in the buffer (20 mM Tris-phosphate, pH 7.5 at 25°C), 2 % SDS, 1 mM Dithiothreitol, 3.6 M Urea, and 15 % (v/v) Glycerol).

### Quality Control

Under suggested conditions, **BlueStar Plus Prestained Protein Ladder** resolves 12 major bands in 15% SDS-PAGE (Trisglycine buffer) and after Western blotting to nitrocellulose membrane.

### Storage

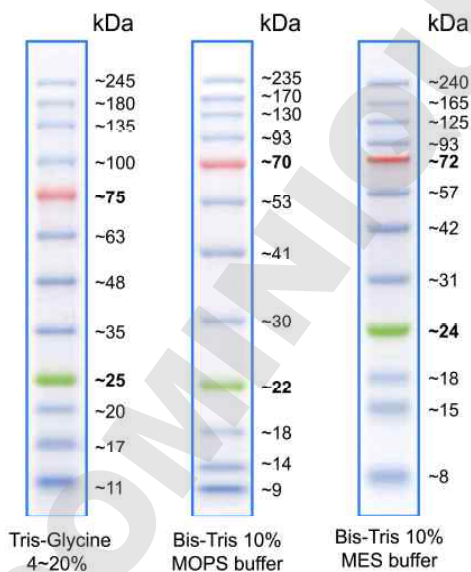
Stable for up to 2 weeks at 25°C. Stable for up to 3 months at 4°C. For long term storage, store at -20°C.

### Guide for Molecular Weight Estimation (kDa)

Migration patterns of **BlueStar Plus Prestained Protein Ladder** in different electrophoresis conditions are listed below.

### Loading

3 µl or 5 µl per loading for clear visualization during electrophoresis on 15-well or 10-well mini-gel, respectively. 1.5~2.5 µl per well for general Western transferring. Apply more for thicker (> 1.5 mm) or larger gel.



Migration patterns of **BlueStar PLUS Prestained Protein Marker** in different electrophoresis buffers.

**Note:** The apparent molecular weight of each protein (kDa) has been determined by calibration against an unstained protein ladder in each electrophoresis condition.

\*supplement data should be considered for more accurate adjustment.

All products are for research use only and not intended for human or animal diagnostic or therapeutic uses.

## BlueStar PLUS Prestained Protein Marker (Cat. No. MWP04 Size: 500 µl)

We recommend to use 3 µl or 5 µl per loading for clear visualization during electrophoresis on 15-well or 10-well mini-gels. For Western Blot experiments we recommend to use 1.5~2.5 µl per well.

If you like to use thicker (>1.5 mm) or larger gel, please apply more of the **BlueStar PLUS Prestained Protein Marker**.

### Description

The **BlueStar Plus Prestained Protein Ladder** is a three-color protein standard with 12 pre-stained proteins covering a wide range molecular weights from 10 to 245 kDa. Proteins are covalently coupled with a blue chromophore except for two reference bands (one green and one red band at 25 kDa and 75 kDa respectively) when separated on SDS-PAGE (Tris-glycine buffer). The **BlueStar Plus Prestained Protein Ladder** is designed for monitoring protein separation during SDS-polyacrylamide gel electrophoresis, verification of Western transfer efficiency on membranes (PVDF, nylon, or nitrocellulose) and for approximating the size of proteins. The ladder is supplied in gel loading buffer and is ready to use.

### Contents

Approximately 0.1~0.4 mg/ml of each protein in the buffer (20 mM Tris-phosphate, pH 7.5 at 25°C), 2 % SDS, 1 mM Dithiothreitol, 3.6 M Urea, and 15 % (v/v) Glycerol).

### Quality Control

Under suggested conditions, **BlueStar Plus Prestained Protein Ladder** resolves 12 major bands in 15% SDS-PAGE (Trisglycine buffer) and after Western blotting to nitrocellulose membrane.

### Storage

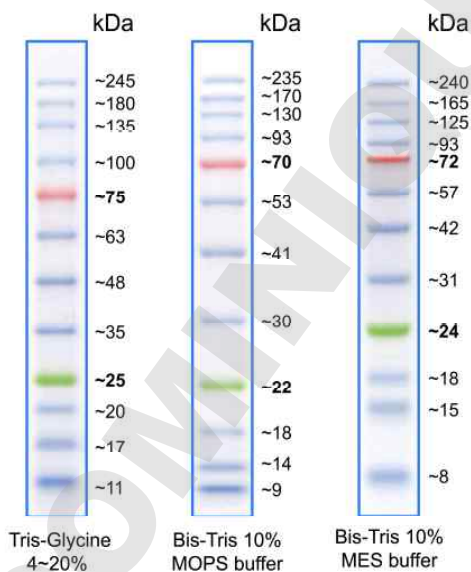
Stable for up to 2 weeks at 25°C. Stable for up to 3 months at 4°C. For long term storage, store at -20°C.

### Guide for Molecular Weight Estimation (kDa)

Migration patterns of **BlueStar Plus Prestained Protein Ladder** in different electrophoresis conditions are listed below.

### Loading

3 µl or 5 µl per loading for clear visualization during electrophoresis on 15-well or 10-well mini-gel, respectively. 1.5~2.5 µl per well for general Western transferring. Apply more for thicker (> 1.5 mm) or larger gel.



Migration patterns of **BlueStar PLUS Prestained Protein Marker** in different electrophoresis buffers.

**Note:** The apparent molecular weight of each protein (kDa) has been determined by calibration against an unstained protein ladder in each electrophoresis condition.

\*supplement data should be considered for more accurate adjustment.

All products are for research use only and not intended for human or animal diagnostic or therapeutic uses.