

Bellco Glass, Inc.
Specification Sheet
For Product #: 1965-30100

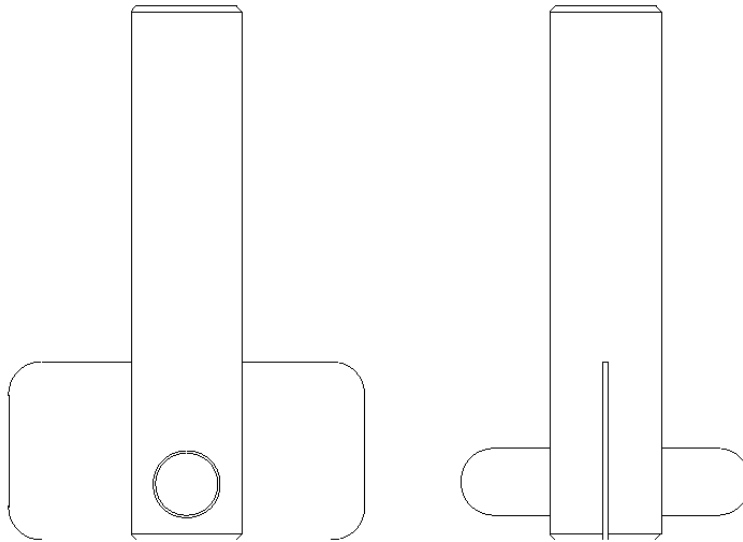
Description: 100-250mL Micro Carrier Impeller Assembly Consists of Paddle, Plug, Magnet Holder, and Magnet

Paddle [A523-198]: PTFE material, 50.8mm wide x 25.4mm tall x .762mm thick

Plug [A523-200]: White Silicone material, 11.1mm OD x 7.9mm long (approx.)

Magnet Holder [A523-201]: White PTFE, 101.6mm long x 15.9mm OD

Magnet [1975-0158A]: PTFE coated magnet, 41.3mm long x 9.5mm OD (approx.)



The information contained in this specification sheet we believe is correct to the best of our knowledge. The recommendations and suggestions herein are made without guarantee or representation as to results. We recommend that adequate tests be made in your laboratory or plant to determine if this product meets all of your requirements.



BELLCO GLASS, INC.



Bellco Glass, Inc. · 340 Edrudo Road · Vineland, NJ · 08360

Ver: 7/05