



# EBI 300/310

## USB TEMPERATURE DATA LOGGER FOR COLD CHAIN MONITORING

- For temperature monitoring related to GMP/HACCP/IFS issues or other perishable goods
- Easy use through automatic PDF report generation, direct USB readout and online configuration

**-ebro-**  
a xylem brand

# Cold Chain Monitoring

With the EBI 300/310 USB Data Logger



Easy temperature monitoring for transport or storage applications

## Start

Program, set optional limits, and press start ... the EBI 300/310 is ready to monitor time and temperature. Once you remove your goods from storage or they reach their destination, you can see immediately if a temperature limit was exceeded with the help of a flashing LED.

## Connect

Connect the logger to any PC after transport or removing the monitored goods from storage. The logger will automatically generate a standard PDF without any additional software.

## Inspect

Inspect time and temperature data for over limit conditions using any PDF reader software. The PDF can be stored, printed or emailed to any place you need. Custom data views can be created and calibration can be done using ebro®'s software Winlog.pro, Winlog.light or Winlog.basic.



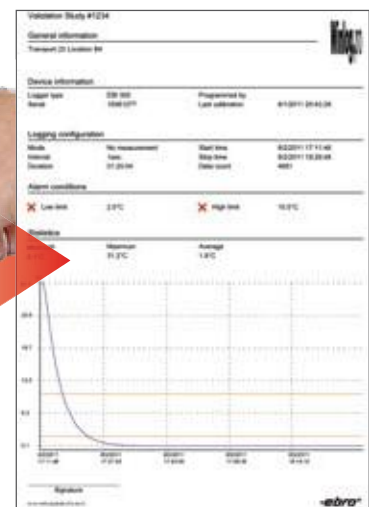
PDF creation



Print directly



Mail to receiver





## Technical Data

Type	EBI 300	EBI 310
Operating temperature	-30 °C ... +60 °C	-30 °C ... +75 °C
Accuracy	±0.5 °C (-20 °C ... +40 °C), ±0.8 °C for the remainder	±0.2 °C (-30 °C ... +30 °C) ±0.5 °C for the remainder
Resolution	0.1 °C	0.1 °C
Sensor	NTC	PT 1000
Memory Capacity	40,000	120,000
Sample Rate	1 min ... 24 h	1 s ... 60 min
Maximum Start Delay	72 h	72 h
Dimensions (L x W x H)	80 x 34 x 14 mm	80 x 34 x 14 mm
Protection class	IP 65	IP 65
Display	value, Min, Max, time till memory full, Alarm on/off	value, Min, Max, time till memory full, Alarm on/off/MKT
Alarm	2 limits	6 ranges/MKT
Material	Polycarbonate	Polycarbonate
PDF creation	PDF	PDF/A 1b
LED	Yes (red)	Yes (Red and yellow)

## How to order:

Type	Description	Part No.
EBI 300	Standard USB Data Logger with Calibration Certificate	1340-6330
EBI 310	High Precision USB Data Logger with Calibration Certificate	1340-6331
TPC 300	External Probe for EBI 300 (-35 °C ... +75 °C)	1341-6331
TPX 220	External Probe for EBI 310 (-200 °C ... +250 °C)	1341-6332
TPX 250	External Probe for EBI 310 (-85 °C ... +50 °C)	1341-6333
EBI 300 WM	Wall Mount for EBI 300 / 310	1340-6340



## Probe specifications

All probes are waterproof, oil resistant and have a food safe cable.

### TPC 300

Works with:	EBI 300
Cable length:	1 m
Needle type probe:	stainless steel, Ø 4 mm, L = 50 mm, pointed
Accuracy:	± 0.5 °C (-20 °C ... +40 °C) ± 0.8 °C for the remaining
Measurement range:	-35 °C ... +75 °C
Sensor type:	NTC

### TPX 220

Works with:	EBI 310
Cable length:	1 m <i>(customized length to 2.5 m possible any time)</i>
Needle type probe:	stainless steel, Ø 5 mm, L = 50 mm, blunt
Accuracy:	± 2.0 °C (-200 °C ... -100 °C) ± 1.0 °C (-100 °C ... -20 °C) ± 0.2 °C (-20 °C ... 60 °C) ± 0.5 °C (-60 °C ... 250 °C)
Measurement range:	-200 °C ... +250 °C
Sensor type:	Pt 1000

### TPX 250 Battery Pack Probe

Works with:	EBI 310
Cable length:	60 cm
Needle type probe:	stainless steel, Ø 5 mm, L = 50 mm, blunt
Accuracy:	± 1.0 °C (-85 °C ... -20 °C) ± 0.2 °C (-20 °C ... 50 °C)
Measurement range:	-85 °C ... +50 °C
Sensor type:	Pt 1000
User replaceable battery.	

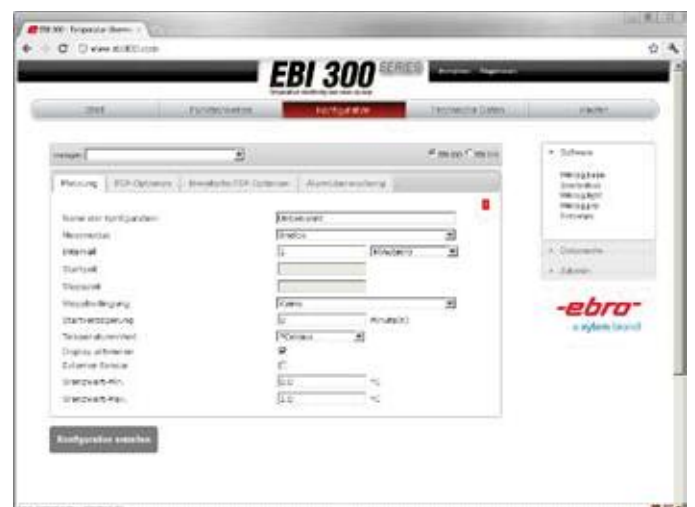
### Wall Mount

Works with EBI 300 and EBI 310  
High strength polycarbonate.  
Mechanical lock for external probe.  
Multiple mounting options.



ebro®'s online configuration tool eliminates the need for additional software.

See [www.ebi300.com](http://www.ebi300.com) for more information.





## Features/Benefits:

- Minimize training costs and user errors through simple, easy to use design
- Eliminate costly and time consuming IQ/OQ procedures through a standard reporting process
- Reduce IT costs with due to the standardized software
- Ensure data integrity since no data manipulation is possible
- GMP, pharmaceutical law compliant; EN 12830, ATP, VO (EG) 37 / 2005 compliant

## Which version is right for you?

### The EBI 300:

Easy to use data logger for food and other standard applications

### The EBI 310:

Flexible data logger for pharma and other high precision applications

	The EBI 300:	The EBI 310:
Temperature monitoring	✓	✓
Direct USB connection	✓	✓
Embedded PDF creation	✓	✓
Programmable via software or online at <a href="http://www.ebi300.com">www.ebi300.com</a>	✓	✓
Calibration certificate included	✓	✓
Monitoring of cryogenic and high temperatures		✓
High precision ( $\pm 0.2$ °C)		✓
High memory capacity (120,000 readings)		✓
Highly flexible alarms (5 limits and MKT)		✓

**-ebro-**  
a xylem brand

ebro® Electronic GmbH  
Peringerstr. 10  
D-85055 Ingolstadt  
Germany  
Tel.+49 (841) 9 54 78-0  
Fax+49 (841) 9 54 78-80  
Internet: [www.ebro.com](http://www.ebro.com)  
E-Mail: [ebro@xylem.com](mailto:ebro@xylem.com)



DOMINIQUE DUTSCHER SAS