

4 THREADS PER INCH, $\frac{3}{4}$ TURN,
DOUBLE START 180° OFFSET.

NOTES: (UNLESS OTHERWISE SPECIFIED)
1. MATERIAL: POLYPROPYLENE.

CORNING INC.
REYNOSA PLANT

TITLE:

TUBE,CENT,50ML,SS,PP

	NAME	DATE
DRAWN	G. MORA	06/30/23

DIMENSIONS ARE IN INCHES
ALTERNATE UNITS ARE IN []

DO NOT SCALE DRAWING

SIZE

A

DWG. NO.

CFD 430897

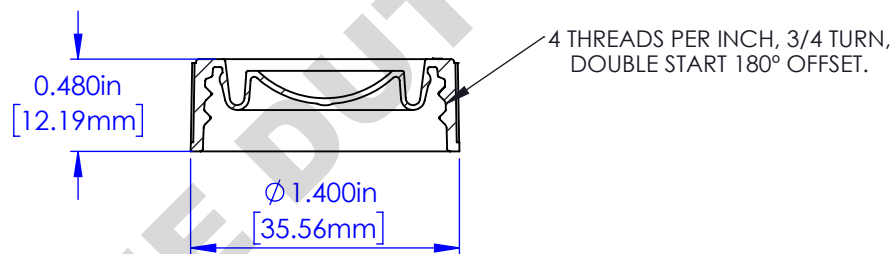
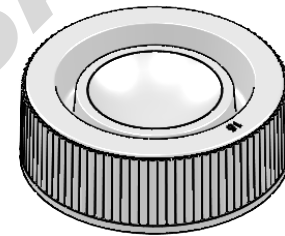
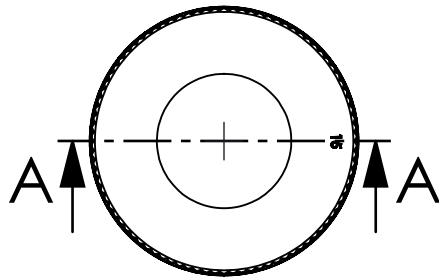
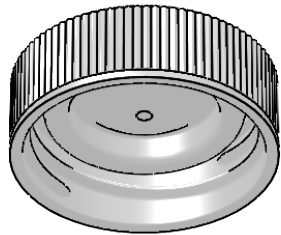
REV

01

SCALE: 1 : 1

WEIGHT:

SHEET 1 OF 2



SECTION A-A

SCALE 1 : 1

NOTES: (UNLESS OTHERWISE SPECIFIED)
1. MATERIAL: POLYPROPYLENE.

CORNING INC.
REYNOSA PLANT

TITLE:

TUBE, CENT, 50ML, SS, PP (CAP)

	NAME	DATE
DRAWN	G. MORA	06/30/23
DIMENSIONS ARE IN INCHES ALTERNATE UNITS ARE IN []		
DO NOT SCALE DRAWING		

SIZE	DWG. NO.	REV
A	CFD 430897	01
SCALE: 1:1	WEIGHT:	SHEET 2 OF 2