



globe[®]
SCIENTIFIC INC.

Toxicology Laboratory

Product Guide

Select products for sample
collection & drug testing
procedures.

www.globescientific.com



Toxicology Laboratory

Product Guide

Select products for sample collection & drug testing procedures.



Table of Contents

- Drug Testing Containers2
- Leak Resistant Containers3
- On-Site Collection and Testing4-5
- Thermometer Strips5
- Patient Identification Labels.....5
- Specimen Transport Bags.....6
- Pipettors7-8
- Pipette Tips.....8, 9
- Serological Pipettes10
- Pipette Controllers11
- Transfer Pipets.....12
- Analyzer Sample Cups13-15
- Test Tubes16-17
- Caps for Test Tubes.....18-19
- Microcentrifuge Tubes20
- Centrifuge Tubes.....20
- Racks20-23
- Weighing Dishes.....23
- Cylinders & Funnel.....24

Drug Testing Containers

90mL Containers with Thermometer Strip

These 90mL urine specimen containers are available in 48mm and 53mm wide mouth configurations. Each comes with attached thermometer strip, tamper evident ID label and white screw cap.

Item #	Description	Unit
6238	90mL (48mm) container, STERILE, 400/case	400
6236	90mL (53mm) wide mouth container, STERILE, 300/case	300



6236 & 6238



Leak Resistant Containers

- Tite-Rite™ containers are the ultimate in leak-tight storage and transport of liquids
- Ideal for hospital pneumatic tube systems
- Tite-Rite caps are produced from polyethylene and contain an inner liner designed to compress against the uppermost walls of the container, providing an air-tight seal
- The containers are produced from polypropylene and have molded graduations

Container: Polypropylene (PP) • Cap: Polyethylene (PE)

For Urine Collection and Transport — STERILE with Sterility Assurance Label

- Unbroken seal guarantees sterility of interior at point of use

Item #	Description	Unit
6220	90mL (48mm) container, with sterility assurance label, STERILE	400
6523	60mL container with label, STERILE	500
6523TP	60mL container with label and thermometer strip, STERILE	500
6526	90mL (53mm) container, with sterility assurance label, STERILE	300
6528	120mL (53mm) container, with sterility assurance label, STERILE	300



Tite-Rite™ leak resistant containers with patient I.D. and sterility assurance labels

For Urine Collection and Transport — Non-Sterile

Item #	Description	Unit
6219	90mL (48mm) container with label, non-sterile	400

On-Site Collection & Testing

4 oz (120mL) Urine Collection Container with Screw Cap

Our popular 4 ounce urine collection container is ideal for use in physician's offices and hospital settings. The containers have molded graduation marks and a frosted writing area.

Sterile Containers:

- Graduated to 100mL
- Individually wrapped
- Trilingual patient ID label (English, Spanish & French)

Non-Sterile Containers:

- Graduated to 100mL
- Frosted writing area

Material: Container = Polypropylene (PP) • Cap = Polyethylene (PE)

Dimensions: Container: 56.8 x 72.5mm • Cap: 61mm O.D.

Item #	Description	Unit
5912	Red screw cap, ID label, individually wrapped, STERILE	100
5914	Red screw cap, non-sterile	100
5915	Red screw cap, non-sterile	500
5916	Red screw cap, affixed thermometer strip, non-sterile	500
5913	Green screw cap, ID label, individually wrapped, STERILE	100

5 oz Wide Mouth Container with Snap Cap

- Extra wide 70mm (2.75") top inner diameter
- Molded graduations in both ounces and milliliters

Material: Container = Polypropylene (PP) • Cap = Polyethylene (PE)

Item #	Description	Unit
5917	With snap cap, 300/case	300

3.5 oz Collection Cup (No Lid)

Polystyrene (PS)

Item #	Description	Unit
6207	Plastic flexible cup, 100/pk, 25 packs/case	2500



5917



6207



5912



5914, 5915

5916



5913

On-Site Collection & Testing

6.5 oz (190mL) Collection Cup

- Graduated
- Pour Spout
- Packaged 25 per sleeve, 20 sleeves per case

Item #	Description	Unit
5920	Polypropylene (PP) collection cup, 25/pk, 20 pks/case	500
5924	Polypropylene (PP) collection cup, with paper lids, 25/pk, 20 pks/case	500
5926	Polypropylene (PP) collection cup, with attached thermometer strip	500
5921	Polystyrene (PS) collection cup, 25/pk, 20 pks/case	500
5925	Polystyrene (PS) collection cup, with paper lids, 25/pk, 20 pks/case	500
5929	Paper lid for 6.5 oz collection cup, 25/pk, 20 pks/case	500



6.5 oz. collection cups

Thermometer Strips & Patient Identification Labels

Thermometer Strips - Liquid Crystal

The self-adhesive liquid crystal thermometer strips are ideal for use with all drug testing collection containers. They are graduated in both Fahrenheit (90° - 100°F) and Celsius (32°-38°C).

Item #	Description	Unit
112215	Liquid crystal thermometer strips, 4000 strips per roll	4000

Patient Identification Labels

Self-adhesive patient identification labels for use on all specimen collection containers. The labels come 25 per sheet, 80 sheets per case.

Item #	Description	Unit
112192	Patient identification label, self-adhesive, 25/sheet	2000



112215



112192

Specimen Transport Bags

Zipper Closure Specimen Transport Bags

Globe Scientific's specimen transport bags are designed for the safe transportation of specimens and documentation. Each bag is printed with the biohazard symbol and offers checkmark boxes to indicate special handling instructions.

- 2 mil gauge polyethylene (PE)
- Attached document compartment
- Zipper closure allows repeated access to specimen
- Imprinted with biohazard symbol and score line
- Complies with OSHA and NCCLS guidelines
- Item #4922 features an absorbent pad that can hold 60mL of urine and 35mL of blood

Item #	Description	Unit
4918	6" x 9" specimen transport bag with score line	1000
4919	6" x 9" specimen transport bag, (no score line)	1000
4922	6" x 9" specimen transport bag with score line and absorbent pad	500



4922 — 6" x 9" specimen bag with absorbent pad

Glue Closure Specimen Transport Bags

The special glue closure of our specimen transport bags offer a liquid-tite tamper evident seal. Simply pull off the liner to expose the glue adhesive and press to close. Item #4923 features a 3" x 5" liquid absorbent pad that quickly absorbs aqueous solutions or bodily fluids providing for safe transportation of specimens.

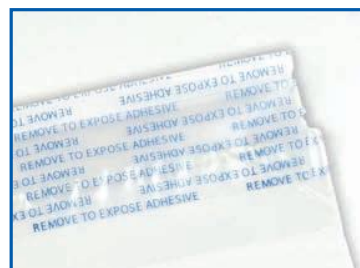
- 2 mil gauge polyethylene (PE)
- Attached document compartment
- Glue closure tamper evident seal
- Imprinted with biohazard symbol
- Perfect for the transport of drug testing products

Item #	Description	Unit
4921	6" x 9" specimen transport bag	1000
4923	6" x 9" specimen transport bag with absorbent pad	500

Additional size and style specimen bags are available. Please contact our Sales Department for details.



4921 & 4923 — 6" x 9" glue closure transport bags



4921 & 4923 — glue closure detail

Pipettors

Diamond Pro™ High-Performance Pipettors

The Diamond PRO™ pipettor is designed with a thermo plastic elastomer grip that minimizes fatigue of hands and fingers. The unique padding not only reduces thumb stress, but also minimizes the transfer of body heat to the pipette, resulting in consistent accuracy.

The pipettors come with a certificate of calibration, a recalibration tool kit and a one year warranty. They are calibrated in an ISO 17025 facility.

- Autoclavable tip cone and lower section assembly
- 1 Year warranty
- Ergonomic, lightweight and soft plunger movement provides added comfort and minimizes fatigue
- Streamlined tip ejector designed for access to narrow-necked tubes and containers
- Two step plunger operation allows you to use both forward and reverse pipetting techniques
- Color coded for easy identification

Adjustable Volume

Item #	Volume (µl)	Color	Tip Group*
3311-50	5-50	Yellow	B
3311-100	10-100	Blue	B
3311-200	20-200	Lavender	B
3311-1000	100-1000	Orange	B

Fixed Volume

Item #	Volume (µl)	Color	Tip Group*
3312-50	50	Blue	B
3312-100	100	Lavender	B
3312-200	200	Lavender	B
3312-250	250	Orange	C
3312-500	500	Orange	C
3312-1000	1000	Green	C

*Refer to Tip Group column in pipet tip ordering information charts on page 9.

Item #3310-6

Pipettor Stand holds up to 6 Diamond Pro pipettors. 4-Place stand also available. Each sold separately.



Diamond Pro™ pipettors are also available in additional volumes. Globe Scientific also offers the Diamond and Diamond Advance™ lines of pipettors to meet various requirements. Contact our Sales Department to see which of our high-performance pipettors best suits your needs and budget.

DiamondPRO™



Pipettors

Diamond RV-Pette PRO™ Repeat Volume Pipettor

Light weight ergonomic design makes the RV-Pette PRO™ Repeat Volume Pipettor the right choice for efficient and comfortable pipetting during repeat dispensing procedures. The pipettor is manufactured to DIN EN ISO 8655 requirements to ensure accuracy and reliability.

Features and Benefits:

- **Simplicity** – One hand adjustment of tip volume and dosing volumes both of which are clearly indicated in a vision pane on the pipettor
- **Flexibility** – Accommodates 12 tip sizes and has 10 adjustments for 120 dispensing volume options
- **Compatibility** – Designed for Diamond RV-Pette PRO™ dispenser tips and also compatible with tips from most manufacturers, including the Eppendorf® Combitips®, Combitips Plus®, and Combitips Advanced®
- **Reliability** – Maintenance free design requires no batteries or charging and top quality materials are resistant to most chemicals

Item #	Description	Unit
3917	RV-Pette PRO™ Repeat Volume Pipettor	Each

Pipette Dispenser Tips

RV-Pette PRO™ Dispenser Tips

Precision manufacturing under strict quality controls ensures that RV-Pette PRO™ Dispenser Tips deliver excellent results when used with Diamond RV-Pette PRO™ Repeat Volume Pipettors and most other brands of repeat volume pipettors. RV-Pette PRO™ tips are available in 12 sizes for dispensing volumes from 1µL to 5500µL and are available non-sterile and sterile.

Features and Benefits:

- **Variety** – Wide range of sizes match all sizes offered by other manufacturers and eliminates the need to change protocols or practice
- **Safety** – Tips use the direct displacement method and are the safe, secure choice for handling a wide range of liquids including those that are viscous, infectious, and volatile
- **Reliability** – Each tip is tested during the automated manufacturing process
- **Confidence** – Sterile tips are individually wrapped and certified to be RNase, DNase, ATP, and pyrogen free for even the most critical applications

Non-Sterile		Sterile	
Item #	Item #	Size	Unit
3920	3920S	0.05mL	100
3921	3921S	0.1mL	100
3922	3922S	0.2mL	100
3923	3923S	0.50mL	100
3924	3924S	1.0mL	100
3925	3925S	1.25mL	100
3926	3926S	2.5mL	100
3927	3927S	5.0mL	100
3928	3928S	10.0mL	100
3929	3929S	12.5mL	100
3930	3930S	25.0mL	25
3931	3931S	50.0mL	25
3930-A		Adapter for 25mL Tip	Each
3931-A		Adapter for 50mL Tip	Each

Diamond RV-Pette PRO™



All instruments and names of manufacturers mentioned herein are the trademarks of their respective companies and are used for reference purposes only. Globe Scientific Inc. expressly disclaims any affiliation to them.

Pipette Tips

General Purpose Graduated Pipette Tips

An economical choice for all routine applications.

- Produced on state-of-the-art, fully automated production equipment
- Certified free from Human DNA, DNase, RNase, Pyrogens and PCR Inhibitors
- USP Class IV and ISO 10993 certified



Tips are offered in color coded racks and economical reloading stacks.

Tips shown actual size

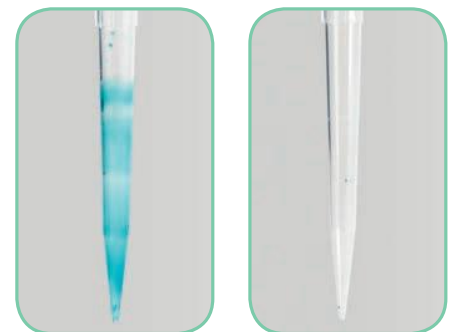


Item #	Volume Range	Tip Length	Tip Color	Sterility	Packaging	Unit	Tip Group
151150R-96	1 - 200µl	54mm	Natural	Non-Sterile	Racked	96 Tips/Rack, 10 Racks/Box	B
151150RF	1 - 200µl	54mm	Natural	Non-Sterile	Reloading Stack	96 Tips/Tray, 10 Trays/Stack	B
151150YR-96	1 - 200µl	54mm	Yellow	Non-Sterile	Racked	96 Tips/Rack, 10 Racks/Box	B
151150YRF	1 - 200µl	54mm	Yellow	Non-Sterile	Reloading Stack	96 Tips/Tray, 10 Trays/Stack	B
151153R-96	100 - 1250µl	84mm	Natural	Non-Sterile	Racked	96 Tips/Rack, 6 Racks/Box	C
151153RF	100 - 1250µl	84mm	Natural	Non-Sterile	Reloading Stack	96 Tips/Tray, 5 Trays/Stack	C
151153BR-96	100 - 1250µl	84mm	Blue	Non-Sterile	Racked	96 Tips/Rack, 6 Racks/Box	C
151153BRF	100 - 1250µl	84mm	Blue	Non-Sterile	Reloading Stack	96 Tips/Tray, 5 Trays/Stack	C

Low Retention Graduated Pipette Tips

- The ideal tip for minimum sample and reagent retention
- Tips feature a super clear and ultra-low binding, hydrophobic surface that is achieved using special resins and state-of-the-art molding equipment
- No silicon additives are used during manufacturing; possibility of sample contamination is eliminated
- Certified free from Human DNA, DNase, RNase, Pyrogens and PCR Inhibitors
- USP Class IV and ISO 10993 certified
- Available sterile in racks and reloading stacks

The super hydrophobic internal surfaces of our low retention tips optimize liquid flow for maximum sample recovery and accuracy.



Standard tip

Low retention tip

Item #	Volume Range	Tip Length	Tip Color	Sterility	Packaging	Unit	Tip Group
150050RS	1 - 200µl	54mm	Natural	Sterile	Racked	96 Tips/Rack, 10 Racks/Box	B
150050RFS	1 - 200µl	54mm	Natural	Sterile	Reloading Stack	96 Tips/Tray, 10 Trays/Stack	B
150053RS	100 - 1250µl	84mm	Natural	Sterile	Racked	96 Tips/Rack, 6 Racks/Box	C
150053RFS	100 - 1250µl	84mm	Natural	Sterile	Reloading Stack	96 Tips/Tray, 5Trays/Stack	C

Additional volumes, styles and packaging configurations are available. Please contact our Sales Department for details.

Serological Pipettes

Globe Scientific's plastic serological pipettes are produced under the strictest protocols and offer the highest degree of accuracy. They are supplied with an aerosol barrier plug that prevents both liquid and aerosols from contaminating the pipettors. The serological pipettes are produced from crystal clear polystyrene (PS) and are color coded for easy volume identification.

Features:

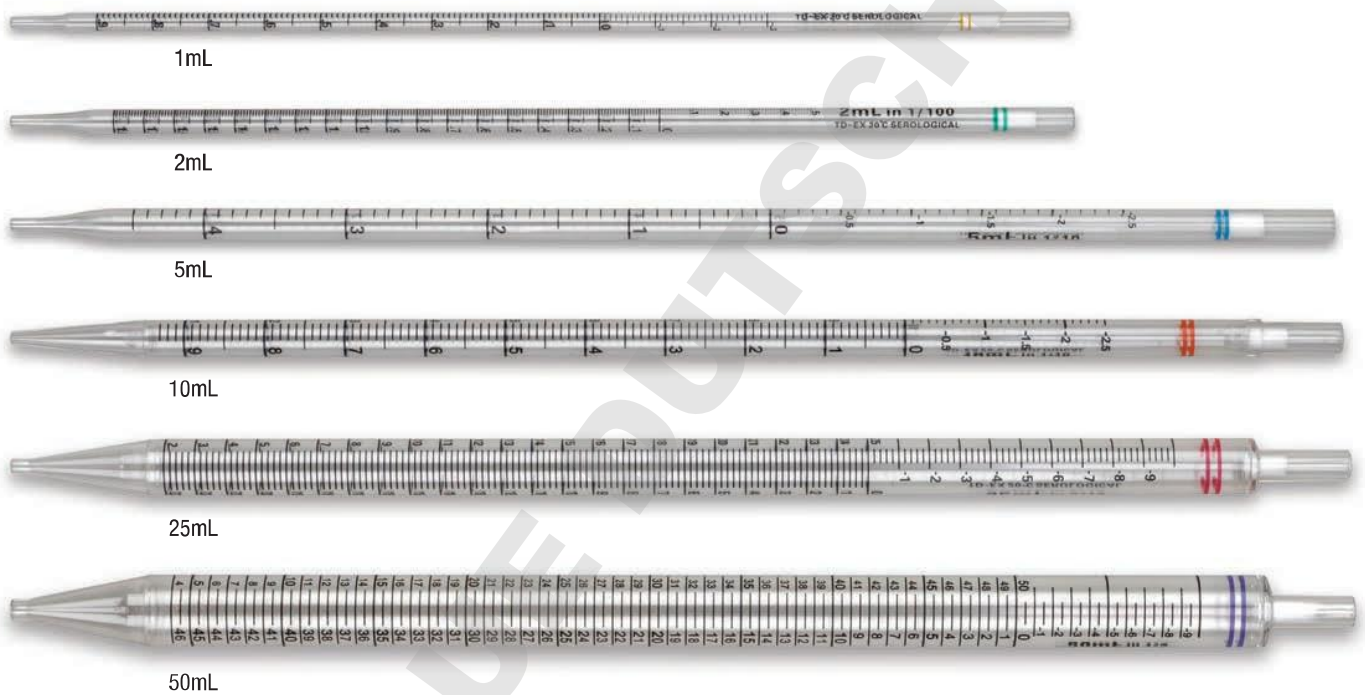
- Calibration is certified for accuracy
- Hydrophilic filter plug
- Reverse graduations on all sizes
- Negative graduations on all sizes
- Fits all major brands of pipettors
- Calibrated to deliver (TD)
- Color coded

Technical Specifications:

- Material: polystyrene (PS) USP Class 6 approved
- Plug: hydrophilic PET
- Accuracy: $\pm 2\%$ at full volume
- Pyrogen-free, non-cytotoxic
- RNase-free and DNase-free
- Sterility: Sterilized by gamma irradiation (SAL 10^{-6})
- Sizes: 1mL, 2mL, 5mL, 10mL, 25mL, 50mL

Manufactured under strict ISO 9001:2008 standards

- Produced in a class 100,000 clean room
- Calibration is certified for accuracy
- All pipettes are non-pyrogenic and non-cytotoxic
- All pipettes are RNase-free and DNase-free
- Sterilized by gamma irradiation (SAL 10^{-6})



- Available in single peel packs or 25-piece bags.
- Peel packs are made from polyethylene and medical paper and are designed to peel apart for easy pipette removal.



Sterile, Individually Wrapped			Sterile, 25 Per Bag			Non-Sterile, 25 Per Bag		
Item#	Size	Unit	Item#	Size	Unit	Item#	Size	Unit
1700	1mL	500	1710	1mL	1000	1715	1mL	1000
1720	2mL	500	1730	2mL	1000	1735	2mL	1000
1740	5mL	250	1750	5mL	375	1755	5mL	375
1760	10mL	200	1770	10mL	250	1775	10mL	250
1780	25mL	100	1782	25mL	100	1784	25mL	100
1820	50mL	100	1822	50mL	100			

Pipette Controllers

Diamond Serologic™ Portable Pipette Controller

The Diamond Serologic™ portable pipette controller is a rechargeable electronic pipetting aid designed for use with glass or plastic serological pipettes in the 0.1 to 100mL volume range. It is lightweight and ergonomically designed for effortless pipetting even during extensive use.

- One year warranty
- Powerful 3-speed engine
- Ergonomic design with soft grip buttons
- Conveniently located speed control switch for one-handed operation
- Safety valve and replaceable membrane filter provide double protection against fluid and aerosol contamination
- Low battery indicator
- Removable nose cone is autoclavable
- Up to eight hours of continuous use on a single charge
- The supplied charger is protected against overcharging, overheating and short circuiting

Diamond Serologic™ (Item #3380) Package Includes:

Diamond Serologic™ portable pipette controller, two 1000mAh NiMH rechargeable batteries, battery charger, three PTFE membrane filters: (1) 0.20 µm, (2) 0.45 µm (one installed), desktop stand and wall mounting bracket.

Item #	Description	Unit
3380	SeroLogic™ portable pipette controller	Each
PH02-10	Silicone adapter with safety valve	Each
SPPH01-16	NiMH replacement batteries	2

Manual Pipette Fillers

Designed for the quick filling and releasing of liquid in aspirating and serological pipettes. Easy to use. Simply rotate the thumb wheel to aspirate or dispense accurate measurements. Press the release lever to quickly dispense all liquid from the pipettes.

- Material: polypropylene (PP)
- Resistant to acids and alkalies
- Easy to clean
- Sizes are color coded

Item #	Description	Unit
1650	Pipette filler, blue, for up to 2mL pipettes	Each
1651	Pipette filler, green, for up to 10mL pipettes	Each
1652	Pipette filler, red, for up to 25mL pipettes	Each

Pipette Filler Bulb

Molded rubber bulb with 3 glass ball valves that are controlled by finger pressure. There are no metal parts to corrode and the filler can be used with most common solutions. Comes complete with adapter for pipettes with capacities greater than 20mL.

Item #	Description	Unit
1670	Pipette filler bulb, with adapter, synthetic rubber	Each

Safety Pipette Filler Bulb

This universal safety filler bulb features a silicone conical adapter that creates a tight seal without twisting. Pipette doesn't come in contact with hard plastic, thus reducing the risk of cracking and chipping. Use the supplied elastic band for hanging on reagent bottles or wrist. This pipette filler fits standard size pipettes.

Item #	Description	Unit
1672	Pipette filler bulb, safety, universal, synthetic rubber	Each



1650, 1651, 1652



1670

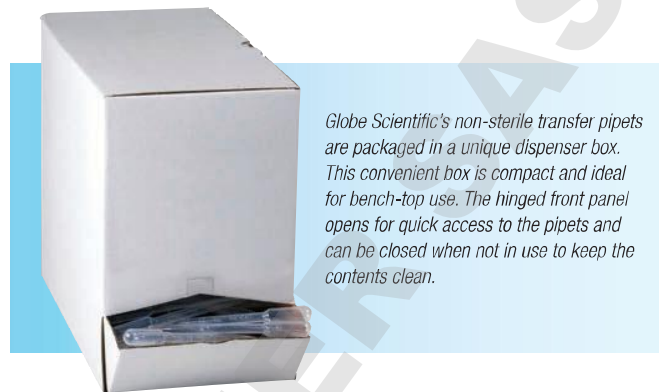


1672

Transfer Pipets

These unbreakable one-piece pipets draw and dispense liquids in controlled, reproducible drop sizes.

- Non-toxic and chemically inert to biological fluids and most acids
- Easy to grip with gloves: These pipets are produced from a custom grade of low-density polyethylene (LDPE) to make them non-slippery
- Temperature range: -50°C to 90°C
- Can be gas (EtO) sterilized



Globe Scientific's non-sterile transfer pipets are packaged in a unique dispenser box. This convenient box is compact and ideal for bench-top use. The hinged front panel opens for quick access to the pipets and can be closed when not in use to keep the contents clean.

3 mL capacity – graduated to 1 mL – small bulb

Pipets shown actual size



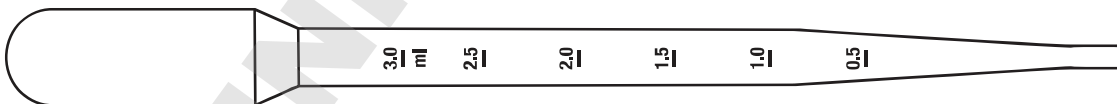
Catalog No.	Sterility	Packaging Information	Unit	Technical Data
137035	Non-sterile	500 pcs/dispenser box, 10 boxes/case	5000	<ul style="list-style-type: none"> • Capacity: 3 mL • Drops/mL: 25 • Bulb draw: 2.2 mL • Total length: 140 mm (5.5") • Stem diameter: 4.4 mm (0.17") • Tip diameter: 2.4 mm (0.09") • Graduated up to: 1 mL • Graduation increments: 0.25 mL
	Non-sterile	500 pcs/dispenser box	500	
137135	Sterile	Individually wrapped, 100/bag, 4 bags/case	400	
	Sterile	Individually wrapped, 100/bag	100	

5 mL capacity – graduated to 1 mL – large bulb



Catalog No.	Sterility	Packaging Information	Unit	Technical Data
137030	Non-sterile	500 pcs/dispenser box, 10 boxes/case	5000	<ul style="list-style-type: none"> • Capacity: 5 mL • Drops/mL: 24 • Bulb draw: 3.4 mL • Total length: 145 mm (5.7") • Stem diameter: 4.8 mm (0.19") • Tip diameter: 2.7 mm (0.11") • Graduated up to: 1 mL • Graduation increments: 0.25 mL
	Non-sterile	500 pcs/dispenser box	500	
137038	Sterile	Individually wrapped, 100/bag, 4 bags/case	400	
	Sterile	Individually wrapped, 100/bag	100	
137138	Sterile	10 pcs/pack, 10 packs/bag, 4 bags/case	400	
	Sterile	10 pcs/pack, 10 packs/bag	100	
137238	Sterile	20 pcs/pack, 20 packs/case	400	

7 mL capacity – graduated to 3 mL – large bulb



Catalog No.	Sterility	Packaging Information	Unit	Technical Data
135030	Non-sterile	500 pcs/dispenser box, 10 boxes/case	5000	<ul style="list-style-type: none"> • Capacity: 7 mL • Drops/mL: 20 • Bulb draw: 3.2 mL • Total length: 160 mm (6.3") • Stem diameter: 7.9 mm (0.31") • Tip diameter: 3 mm (0.12") • Graduated up to: 3 mL • Graduation increments: 0.5 mL
	Non-sterile	500 pcs/dispenser box	500	
135038	Sterile	Individually wrapped, 100/bag, 4 bags/case	400	
	Sterile	Individually wrapped, 100/bag	100	
135138	Sterile	10 pcs/pack, 10 packs/bag, 4 bags/case	400	
	Sterile	10 pcs/pack, 10 packs/bag	100	
135238	Sterile	20 pcs/pack, 20 packs/case	400	

A full range of additional sizes and styles are available. Please contact our Sales Department for information and samples.

Analyzer Sample Cups

Multi-Purpose Sample Cups

Globe Scientific's multi-purpose sample cups are available in a variety of sizes and designed for use on the most popular instruments in the industry. The sample cups are made to exact specifications and provide excellent optical properties.

Item #	Description	Unit
110711	0.25mL multi-purpose sample cup, PS	1000
110021	0.5mL multi-purpose sample cup, PS	1000
110610	1.5mL multi-purpose sample cup, PS	1000
110621	2.0mL multi-purpose sample cup, PS	1000
110911	3.0mL multi-purpose sample cup, PS	1000
110811	4.0mL multi-purpose sample cup, PS	1000
113132	Cap for sample cups: 110711, 110021, 110610 & 110621	1000
113133	Cap with cross cut for sample cups: 110711, 110021, 110610 & 110621	1000



113132



113133

In addition to what is shown on these pages, Globe Scientific offers sample cups, cuvettes and replacement parts for most major laboratory analyzers on the market. Our analyzer consumables are equivalent to the original instrument manufacturer, while providing tremendous savings. Our outstanding quality and low prices have made us the #1 requested brand on the market.



Call today and request free samples for your onsite evaluation!

Analyzer Sample Cups

Nesting Sample Cups

The nesting sample cup is used when smaller sampling is necessary. It is used in conjunction with other test tubes or original blood collection tubes. To use, simply transfer the sample from the original collection tube into the nesting cup. Then, place the nesting cup inside the original collection tube. The nesting cup "rides" along with the originally labeled/barcoded tube in the analyzer. This procedure saves time by eliminating the need to re-label the smaller sample. Ideal for use on direct-tube sampling machines: Dade Dimension®, Hitachi® 747, Kodak Ektachem® 700 Series and more.

Item #	Description	Unit
5504	1 mL sample cup for 12mm & 13mm tubes, PS	1000
5505	2mL sample cup for 16mm tubes, PS	1000



5504



5505

False Bottom Sample Cups

Globe Scientific's false bottom tubes are designed for use as a secondary tube for barcoding on automated analyzers. Popular analyzers include Hitachi®, Olympus®, Corning®, Ortho®, Kodak®, Beckman®, IA®, Tosoh®, Vitros® and more.

Item #	Description	Unit
5527	5ml false bottom tube, polypropylene (PP)	1000
5527B	5ml false bottom tube, polypropylene (PP), bulk	1500
5528	Screw cap for 5mL false bottom tube (#5527 & #5527B)	1000
116152-color	Plug stopper for 5mL false bottom tube (#5527 & #5527B) (Available in blue, clear, green, black, lavender, orange, red, white, yellow)	1000



5528



116152



5527, 5527B & 5528

See an item that you think might work with your analyzer?



Call today and request free samples for your onsite evaluation!

Analyzer Consumables for Popular Instruments

Abbott®

Item #	Model	Product	Unit
5105	Architect®	Reaction vessel, PP	1000
5106		Sample cup, PS	2000
5542		Sample cup, PS	1000
5527	AxSYM®	5mL false bottom tube, PP	1000
5527B		5mL false bottom tube, PP, bulk	1500
5528		Screw cap for false bottom tube, PE	1000
5542		Sample cup, PS	1000
5543		Sample tube, PP, 16 x 75mm	1000



5105



5106

Beckman®

Item #	Model	Product	Unit
5536	Cx® Series	2mL sample cup, PS	1000
5541		0.5mL sample cup, PS	1000
5527	Other	5mL false bottom tube, PP	1000
5527B		5mL false bottom tube, PP, bulk	1500
5528		Screw cap for false bottom tube, PE	1000



5542



5543

Hitachi®

Item #	Model	Product	Unit
5505		2mL nesting sample cup, PS	1000
110911		3mL sample cup, PS	1000
110915		Micro sample cup, PS	1000

Olympus®

Item #	Model	Product	Unit
110621	AU400, AU600, AU640	2mL sample cup, PS	1000
5504	AU2700 & AU5400	1mL nesting sample cup, PS	1000



5536



5541

Ortho®

Item #	Model	Product	Unit
5548	Vitros® 250	Micro sample cup, PS	1000
5505	& Vitros® 750	2mL nesting sample cup, PS	1000
5527		5mL false bottom tube, PP	1000
5527B		5mL false bottom tube, PP, bulk	1500
5528		Screw cap for false bottom tube, PE	1000



5548



110915

Roche®

Item #	Model	Product	Unit
5548	Cobas Integra®	Micro sample cup, PS, 1000/pack	1000
110911		3mL sample cup, PS	1000
110911	Elecsys® 1010	3mL sample cup, PS	1000
110915	& 2010	Micro sample cup, PS	3600
110915	Cobas Core®	Micro sample cup, PS	1000
110811	CEDEX®	4mL multi-purpose sample cup, PS	1000



110621



5504

All instruments and names of manufacturers mentioned herein are the trademarks of their respective companies and are used for reference purposes only. Globe Scientific Inc. expressly disclaims any affiliation to them.

Borosilicate Glass Culture Tubes

Globe Scientific offers a high quality line of borosilicate glass culture tubes. These tubes offer exceptional quality at great prices. They are neatly packaged in heavy duty boxes of 250 and are shrink wrapped to keep them particle free. The boxes are compact and designed to fit into most test tube dispensers.

- Made from superior quality borosilicate glass to reduce pH changes and contaminants that are potentially leached from soda lime glass tubes
- Tubes feature well-rounded bottoms and smooth, fire-polished rims
- Dimensional specifications are rigidly controlled for reliable, uniform results
- Produced in an ISO 9001:2008 certified factory
- Tubes can be used for tissue culture and blood banks

All tubes shown actual size

10 x 75mm
(3mL Capacity)



1503

12 x 75mm
(5mL Capacity)



1505

13 x 100mm
(7mL Capacity)



1510

16 x 100mm
(10mL Capacity)



1512

16 x 125mm
(12mL Capacity)



1515

16 x 150mm
(15mL Capacity)



1517

Packaging: 250 per box, 4 boxes per case (1000 each)

Item #	Size	Volume	Unit
1503	10 x 75mm	3mL	1000
1505	12 x 75mm	5mL	1000
1510	13 x 100mm	7mL	1000
1512	16 x 100mm	10mL	1000
1515	16 x 125mm	12mL	1000
1517	16 x 150mm	15mL	1000



Our heavy duty corrugated boxes prevent breakage during shipping!

Plastic Test Tubes



All tubes shown actual size

Globe Scientific offers an extensive line of plastic multi-use tubes. They are molded from either premium grade polystyrene for clarity, or polypropylene for impact strength and stability to common acids, alkalis and solvents. Polypropylene tubes are autoclavable and freezable. Globe's broad range of sizes are sure to fit most laboratory applications.

Test Tube Spin Rates:

- Polystyrene (PS): 1500 rpm
- Polypropylene (PP): 3000 rpm

12 x 75mm (5mL Capacity)

Item #	Description	Unit
110410	Polystyrene (PS), 1000/bag	1000
110441	Polypropylene (PP), natural, 1000/bag	1000

13 x 75mm (5mL Capacity)

Item #	Description	Unit
110470	Polystyrene (PS), non-graduated	1000
110471	Polypropylene (PP), non-graduated	1000

16 x 75mm (8mL Capacity)

Item #	Description	Unit
119010A	Polystyrene (PS), non-graduated, no rim	1000
119040A	Polypropylene (PP), non-graduated, no rim	1000

16 x 100mm (12mL Capacity)

Item #	Description	Unit
111012	Polystyrene (PS), non-graduated, no rim	2000
111041	Polypropylene (PP), non-graduated, no rim	2000

A full range of additional styles and sizes are available. Please contact our Sales Department for information and samples.

Caps for Test Tubes



Single tab series — single thumb tab allows the tubes to be nested closely in test tube racks and still provides easy removal of the cap.



Double tab series — with two thumb tabs for easy removal of the cap.

Snap Caps

These colorful snap-on closures are an effective way to recap blood drawing tubes, glass test tubes and plastic culture tubes. They are precision molded from low-density polyethylene (LDPE) and maintain a tight seal during centrifugation, agitation and refrigeration procedures. They are available in bright attractive colors for sample identification purposes.

Single Tab Snap Caps, Polyethylene (PE)

Item #	Description	Unit
13mm		
113146A	Gray	1000
113146B	Blue	1000
113146C	Natural	1000
113146G	Green	1000
113146L	Lavender	1000
113146R	Red	1000
113146W	White	1000
113146Y	Yellow	1000
16mm		
113148A	Gray	1000
113148B	Blue	1000
113148C	Natural	1000
113148G	Green	1000
113148L	Lavender	1000
113148R	Red	1000
113148W	White	1000
113148Y	Yellow	1000

Double Tab Snap Caps, Polyethylene (PE)

Item #	Description	Unit
12mm		
113142A	Gray	1000
113142B	Blue	1000
113142C	Natural	1000
113142G	Green	1000
113142L	Lavender	1000
113142R	Red	1000
113142Y	Yellow	1000
13mm		
113140A	Gray	1000
113140B	Blue	1000
113140C	Natural	1000
113140G	Green	1000
113140L	Lavender	1000
113140R	Red	1000
113140Y	Yellow	1000
16mm		
113141A	Gray	1000
113141B	Blue	1000
113141C	Natural	1000
113141G	Green	1000
113141L	Lavender	1000
113141R	Red	1000
113141Y	Yellow	1000



Equivalent to the Fisherbrand®
VersaClosure® tube closures.

Universal Fit Snap Cap, Polyethylene (PE)

Fits most 12mm, 13mm and 16mm plastic test tubes.

Item #	Description	Unit
118115A	Gray	1000
118115B	Blue	1000
118115C	Natural	1000
118115G	Green	1000
118115K	Black	1000
118115L	Lavender	1000
118115R	Red	1000
118115Y	Yellow	1000



Universal Fit Plug Cap, Polyethylene (PE)

Fits most 10mm, 12mm, 13mm & 16mm test tubes.

Item #	Description	Unit
5529	Light blue	1000
5529DB	Dark blue	1000
5529G	Green	1000
5529L	Lavender	1000
5529R	Red	1000
5529W	White	1000
5529Y	Yellow	1000



Flanged Plug Caps

Globe Scientific's polyethylene (PE) flanged plug caps provide exceptional leak-resistance in test tubes, centrifuge tubes and round cuvettes.

Item #	Description	Unit
	12mm	
118127B	Blue	1000
118127C	Natural	1000
118127G	Green	1000
118127K	Black	1000
118127L	Lavender	1000
118127N	Orange	1000
118127R	Red	1000
118127W	White	1000
118127Y	Yellow	1000

	13mm	
118240B	Blue	1000
118240C	Natural	1000
118240G	Green	1000
118240K	Black	1000
118240L	Lavender	1000
118240N	Orange	1000
118240R	Red	1000
118240W	White	1000
118240Y	Yellow	1000

	16mm	
116152B	Blue	1000
116152C	Natural	1000
116152G	Green	1000
116152K	Black	1000
116152L	Lavender	1000
116152N	Orange	1000
116152R	Red	1000
116152W	White	1000
116152Y	Yellow	1000

All instruments and names of manufacturers mentioned herein are the trademarks of their respective companies and are used for reference purposes only. Globe Scientific Inc. expressly disclaims any affiliation to them.

1.5mL & 2mL Microcentrifuge Tubes

Graduated, Attached Cap

These 1.5mL and 2mL polypropylene microcentrifuge tubes have attached snap caps. They are graduated to facilitate accurate sampling. The tubes are resistant to most chemical reagents and can be autoclaved at 130°C.

Item #	Description	Unit
111558	1.5mL, polypropylene, attached snap cap, natural	1000
111558B	1.5mL, polypropylene, attached snap cap, blue	1000
111558P	1.5mL, polypropylene, attached snap cap, pink	1000
111558Y	1.5mL, polypropylene, attached snap cap, yellow	1000
111568	2mL, polypropylene, attached snap cap, natural	1000

Globe Scientific also offers a full line of screw cap microcentrifuge tubes in .5mL, 1.5mL and 2mL volume capacities. Contact our Sales Department for samples or information.

15mL & 50mL Centrifuge Tubes

These high quality centrifuge tubes are molded from polypropylene (PP) and feature flat-top, leak resistant blue caps. The tubes are printed with black graduation marks and have a large white writing area.

- Sterile tubes have attached blue screwcap
- White printed writing space
- Autoclavable (without cap)
- Black printed graduations
- Spin rate: 8500 RCF
- Temperature range: -10°C to +80°C

Tube: Polypropylene (PP)

Cap: High Density Polyethylene (HDPE)

15 mL Polypropylene

- Dimensions: 17mm x 120mm

Item #	Description	Unit
6285	15mL, STERILE, 25/bag, 500/case	500
6286	15mL, STERILE, 50/rack, 500/case	500
6284	15mL, non-sterile, bulk, with separate blue screwcap	500

50 mL Polypropylene

- Dimensions: 30mm x 115mm

Item #	Description	Unit
6288	50mL, STERILE, 25/bag, 500/case	500
6289	50mL, STERILE, 25/rack, 500/case	500
6287	50mL, non-sterile, bulk, with separate blue screwcap	500

Additional 15mL and 50mL centrifuge tubes are available in various substrates and packaging configurations. Contact our Sales Department for samples or information.

Centrifuge Tube Rack

Designed to hold both 15mL and 50mL centrifuge tubes in one rack. The rack ships flat and is simple to assemble. It holds twenty 50mL and thirty 15mL centrifuge tubes.

- ABS plastic

Dimensions (L x W x H): 209 x 171 x 63mm (8.25" x 6.75" x 2.5")

Item #	Description	Unit
456930	For 15mL & 50mL centrifuge tubes, orange	Each



111558 Series



111568



6285, 6286, 6284



6288, 6289, 6287



456930

Snap-N-Racks

This line of plastic test tube racks are shipped flat in order to reduce shelf space and then simply snap together for use. The special design allows all samples to be incubated at the same temperature. These racks can be used in freezers without deforming or going brittle. They will not rot, rust or deform. Alphanumeric markings are molded into the racks to provide easy test tube identification. They are available in four colors for color coding test samples, or simply for aesthetics in the modern laboratory. They are stackable when empty.

- Produced from polypropylene (PP)
- Autoclavable at 121°C for 20 minutes
- Non-floating in a water bath
- All Snap-N-Racks are available in white, blue, yellow and red

For Microcentrifuge Tubes – 100 place

Dimensions (L x W x H): 263 x 109 x 45mm (10.25" x 4.25" x 1.75")

Item #	Description	Unit
456303	Microcentrifuge Tube Rack, 100-place, white	Each
456304	Microcentrifuge Tube Rack, 100-place, blue	Each
456306	Microcentrifuge Tube Rack, 100-place, yellow	Each
456310	Microcentrifuge Tube Rack, 100-place, red	Each

For 12 & 13mm Tubes – 90 place, 6 x 15 format

Dimensions (L x W x H): 246 x 105 x 64mm (9.75" x 4" x 2.5")

Item #	Description	Unit
456403	13mm size, 90-place, white	Each
456404	13mm size, 90-place, blue	Each
456406	13mm size, 90-place, yellow	Each
456410	13mm size, 90-place, red	Each

For 16 & 17mm Tubes – 60 place, 5 x 12 format

Dimensions (L x W x H): 246 x 105 x 72mm (9.75" x 4" x 3")

Item #	Description	Unit
456503	16mm size, 60-place, white	Each
456504	16mm size, 60-place, blue	Each
456506	16mm size, 60-place, yellow	Each
456510	16mm size, 60-place, red	Each

Racks ship flat then fold and snap together at point of use. Instructions included with each rack.

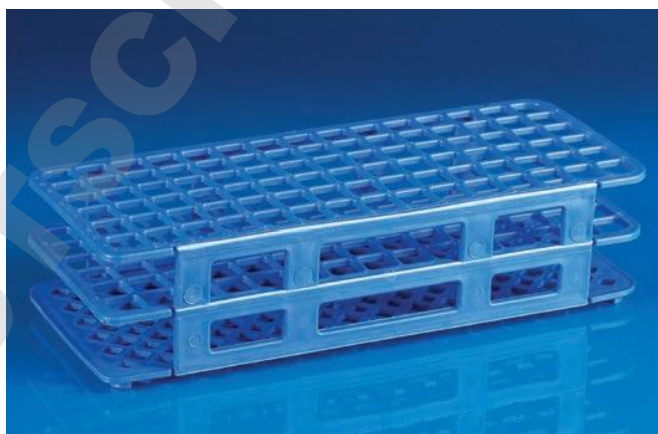


Alphanumeric markings for easy sample identification

Snap-N-Racks are also available for tubes up to 30mm in diameter. Contact our Sales Department with your requirements.



456303



456404



456506

Now use **1** rack for multiple size tubes!

These racks feature flexible rubber grips that firmly hold a variety of tube sizes in a single rack.



Low profile 456920 and 456921 allow for easy viewing of tube labels.

Innovative Grip Racks

These specially designed test tube racks feature rubber grips that hold test tubes in place when decanting liquid (photo A). Item #456925 & #456926 feature a unique tube ejector that allows the user to easily eject all tubes into a waste receptacle (photos B and C).

- Polyoxemethylene (POM)
- Autoclavable
- 50-place (5 x 10 configuration)
- Single racks accommodate a variety of tube sizes
- Hold tubes securely while decanting

Low Profile Grip Rack

Holds various size tubes up to 17mm diameter.

- Dimensions: 254 x 140 x 51mm (10" x 5.5" x 2")
- Low profile rack allows for easy viewing of labels on tubes

Item #	Description	Unit
456920	Autoclavable grip rack, blue	Each
456921	Autoclavable grip rack, orange	Each

Grip Rack with Tube Ejector

Holds various size tubes up to 16mm diameter.

- Dimensions: 260 x 140 x 82mm (10.25" x 5.5" x 3.25")
- Unique tube ejector for simultaneous ejection of all tubes

Item #	Description	Unit
456925	Autoclavable grip rack, blue	Each
456926	Autoclavable grip rack, orange	Each



Both racks feature rubber grips that hold tubes securely in place when decanting liquids.



Items 456925 & 456926 feature a unique tube ejector for easy disposal of tubes.

Heavy-Duty Wall Mount Drying/Draining Rack

This 72 place laboratory drying rack is perfect for draining and drying of all types of labware. The rack comes with a mounting kit to hang on the wall. The back plate of the support is made from a single mold of 4mm rigid high impact polystyrene (HIPS). The peg sockets have closed ends eliminating leakage and consequent biohazards. The seamless drip channel collects waste which drains via the supplied drain tube.

The 72 (push in) pegs can accommodate items with a neck bore in excess of 15mm. They are easily removable for cleaning or to accommodate odd shaped items. Also included are 11 small pegs to accommodate small diameter items, such as test tubes. This durable rack will not rust or stain.

- 72 interchangeable pegs
- Drip channel with draining hose
- Mounting kit and template for hanging
- Hooks for joining together additional racks

Dimensions: 24.75" high x 17.75" wide x 4.5" deep

Item #	Description	Unit
600213	Drying rack, 72-place	Each
601213	Additional small pegs for drying rack, 11/pack	11



600213

Weighing Dishes

These plastic anti-static weighing dishes will resist diluted acids, aqueous solutions, alcohols and bases. They have a smooth surface providing accurate pour-outs with minimal sample loss. Non-reactive with most substances and suitable for weighing static affected materials. Will withstand temperatures up to 80°C.

- Polystyrene (PS)

Hexagonal Plastic Anti-Static Weighing Dishes

Globe Scientific's hexagonal weighing dishes are available in 4 different sizes. They can be easily bent into pouring spouts to provide accurate pour-outs with minimal sample loss. The dishes are stackable for easy storage.

Item #	Size	Volume	Dimensions	Unit
3615	Small	20mL	top = 38mm, bottom = 25mm	500
3616	Medium	50mL	top = 64mm, bottom = 51mm	500
3617	Large	200mL	top = 102mm, bottom = 76mm	500
3618	Extra Large	350mL	top = 127mm, bottom = 89mm	500



Anti-static hexagonal plastic weighing dishes.

Square Plastic Anti-Static Weighing Dishes

Globe Scientific's square weighing dishes are available in 3 sizes. They have sloping sides, rounded corners and flat bottoms to ensure perfect stability on counters.

Item #	Size	Volume	Dimensions	Unit
3620	Small	20mL	41 x 41 x 8mm	500
3621	Medium	100mL	89 x 89 x 25mm	500
3622	Large	330mL	140 x 140 x 25mm	500



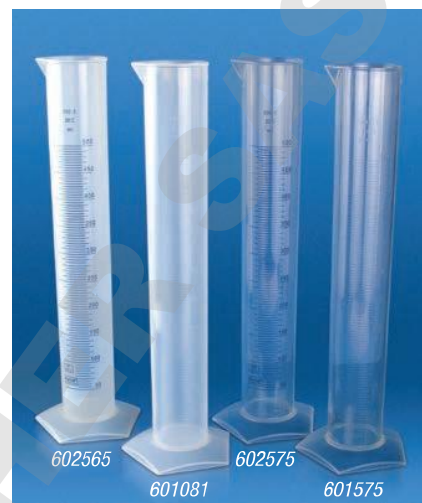
Anti-static square plastic weighing dishes.

Plastic Graduated Cylinders

These superior quality graduated cylinders are ideal for the safe and accurate measurement of all types of liquids. Our cylinders offer a wide rim and a tapered pour spout for easy filling and pouring. The non-wetting interior surface eliminates concave menisci, providing more accurate measurements. The wide pentagonal shaped base provides stability and makes the cylinder roll-resistant. The heavy-duty plastic withstands repeated autoclaving.

- Choose from translucent polypropylene (PP) or crystal clear polymethylpentene (PMP)
- Available with either molded graduations or easy-to-read blue printed graduations
- Wide opening and tapered pour spout
- Graduated in milliliters (mL)
- Chemically resistant to most acids, bases and many common solvents
- All are autoclavable at 121°C for 20 minutes
- Food Grade

Item #	Description	Units
601081	500mL polypropylene (PP), molded graduations	Each & 12
602565	500mL, polypropylene (PP), printed graduations	Each & 12
601575	500mL, polymethylpentene (PMP), molded graduations	Each & 12
602575	500mL, polymethylpentene (PMP), printed graduations	Each & 12



Cylinders are also available in volumes ranging from 10mL to 2000mL. In addition, Globe Scientific offers a full compliment of plastic laboratory beakers, bottles, flasks and carboys. Please inquire.

Analytical Funnels

These heavy-duty polypropylene (PP) analytical funnels are perfect for use in analytical chemistry applications. They feature long, narrow stems, which make them ideal for use with liquids. The analytical funnels have internal and external ribbing which helps to prevent air lock. They are angled at exactly 60° for rapid filtration. Available in 9 different sizes, these analytical funnels accommodate standard filter paper sizes.

- Translucent polypropylene (PP)
- 60° angle for quick filtration
- Excellent chemical resistance
- Can withstand temperatures of up to 121°C
- Autoclavable at 121°C for 20 minutes



Ordering Information

Item #	Funnel Size	Units
600145	27mm	5 & 20
600146	37mm	5 & 20
600147	46mm	5 & 20
600148	66mm	5 & 20
600150	81mm	2 & 20
600152	100mm	2 & 10
600153	120mm	2 & 10
600155	150mm	Each & 5
600156	183mm	Each & 5

Technical Information

Capacity	Top Diameter	Stem Length	Stem Diameter
3.5mL	25mm	37mm	4mm
10mL	35mm	37mm	5mm
20mL	50mm	43mm	5mm
50mL	65mm	62mm	10mm
100mL	80mm	70mm	11mm
200mL	100mm	82mm	11mm
350mL	120mm	86mm	11mm
700mL	150mm	115mm	14mm
1250mL	180mm	140mm	14mm



www.globescientific.com

Customer service, sales and technical support:

Phone 1 (800) 394-4562 • 1 (201) 599-1400
 Fax 1 (201) 599-1406
 E-mail mail@globescientific.com

Globe Scientific Inc.

610 Winters Avenue
 Paramus, New Jersey 07652 • USA