

## Oosafe® PS Centrifuge Tube, 15 ml, Non-Treated Surface

Description (volume) (ml)	Prod. No.	Qty/pc	Qty/cs
15 ml	OOPW-CT05	5	500

### Intended Use

**General Intended Use:** For the examination of specimens, including blood and tissue donations, derived from the human body.

**Specific Intended Use:** Aid in centrifugation of samples and examination after the centrifugation.

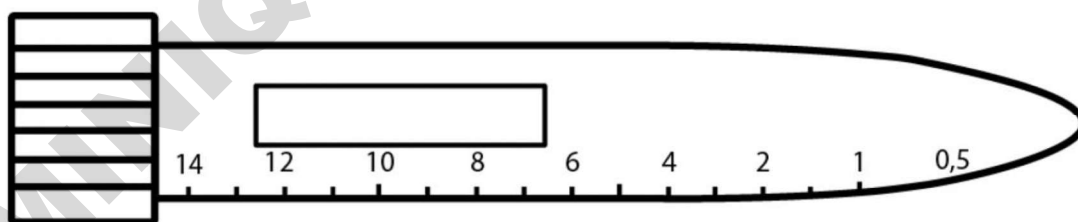
### Safety

Observe the expiry date and the storage condition on the label.  
Do only use optically perfect and undamaged plasticware.

### Handling

The package of Oosafe® PS Centrifuge Tube, 15 ml is breathable material with no VOC release. After opening the sealing, the tube can be directly put into use.

Prepare samples according to the protocol applied. The tube can be filled up to 15 ml of preferred sample. Leak proof design ensures sample stability when used in centrifugation procedures. Close the cap tightly before centrifuge and remember to write detailed information on the designated area of the tube. Do not use any cracked or deformed tubes.



**Discard after use.**

**Storage:** Store at room temperature.