

---

## Oosafe® 100 mm Dish, Non-Treated Surface

---

Description (D, H) (mm)	Prod. No.	Qty/pc	Qty/cs
92.4, 19.9	OOPW-HD10	10	250

### **Intended Use:**

**General Intended Use:** For the examination of specimens, including blood and tissue donations, derived from the human body.

**Specific Intended Use:** Aid in large volume cells culturing and observation of cells growth under microscope.

**Product compartments:** 1

### **Dish Volumes:**

Well compartment 1: 105 ml



### **Safety**

Observe the expiry date and the storage condition on the label.

Do only use optically perfect and undamaged plasticware.

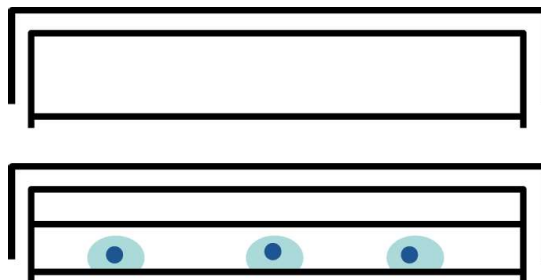
### **Handling**

Prior to use, open the sealing and leave the dishes to off-gas before use.

Oosafe® 100 mm Dish packages may be off-gassed by partially opening the sleeve or taking the dishes entirely out of the packaging. In either case, the opened sleeves or dishes must be kept in a sterile environment at room temperature and humidity. The dishes should remain covered with the lids until they are loaded with the sample and medium.

Place small droplets on the bottom of the dish. The recommended volume per drop is 20-50 µl. Overlay the drop with oil. The recommended volume is 50 ml. It is also possible to use the dish entirely instead of only making drops.

When the dish is covered by the lid, the air can still go in and out of the dish.



**Discard after use.**

**Storage:** Store at room temperature.