



GLASSWARE

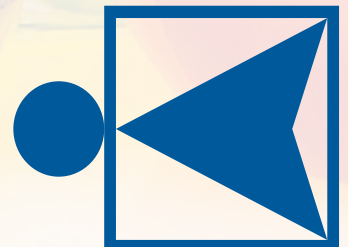
- ▶ Manufacturer of scientific glassware since 1954
- ▶ Exporter to the 5 continents
- ▶ ISO 9001-2008 and ISO 13485 certified
- ▶ Control of a wide variety of technologies for glass tubing and glass sheet processing, as well as glass melting furnace
- ▶ Production expertise: Petri dishes, Pasteur pipettes, desiccators, volumetric ware and glass syringes
- ▶ Complete laboratory glassware production range according to the applicable international standards
- ▶ Calibration laboratory – Normalab – certified according to ISO/IEC 17025
- ▶ Representation and distribution of a wide range of products and brands of plastic ware, porcelain ware, chemicals, sample collection, equipment, surgery, liquid handling...

**With a 60 year path marked by growth and consolidation,
Normax embraces the world and the future!**

Contacts

www.normax.pt
Rua Santa Isabel, 17
2430-475 Marinha Grande - Portugal
P.O. Box 23
2431-955 Marinha Grande - Portugal

tel. +351 244 572 062
fax +351 213 516 246
Dália Silva - dalia@normax.pt
Élia Pereira - elia.mira@normax.pt
Manuela Matzeu - manuela.matzeu@normax.pt
Samuel Rodrigues - samuel@normax.pt



NORMAX

Alphabetical index

A	Pag.	F	Pag.
Alcohol lamp	11	Kitasato flask	10
B	Pag.	L	Pag.
Beaker	6	Laboratory bottle	11
BOD bottle	12	M	Pag.
Burette	4	Measuring cylinder	3
C	Pag.	Microscope cover glass	9
COD set	12	Microscope slide	8
Calibration certificate	2	P	Pag.
Certificate of performance	2	Pasteur pipette	6
Chromatography column	12	Petri dish	5
Cleaning of glassware	2	Q	Pag.
Crystallising dish	7	Quality	2
D	Pag.	S	Pag.
Desiccator	5	Screw neck bottle	10
Digestion tube	12	Separating funnel	6
Dropping bottle	10	Staining jar	9
E	Pag.	T	Pag.
Erlenmeyer flask	6	Test tube	7
F	Pag.	V	Pag.
Filter crucible	11	Volumetric flask	3
Filtration set	10	Volumetric pipette	4
Flask	7	W	Pag.
Funnel	9	Watch glass	5
G	Pag.	Water distiller	8
Graduated pipette	3	Weighing boat	11
		Weighing bottle	11





Ask for our catalogue of Laboratory glass
visit us at www.normax.pt



Cleaning of glassware

All the laboratory glassware manufactured by NORMAX can be cleaned manually or using a laboratory washing machine. NORMAX uses only the best quality glasses and printing enamels.

All the graduation marks are made using amber stains or enamels tested to comply with the requirements of the international standard ISO 4794 – Laboratory glassware – Methods for assessing the chemical resistance of enamels used for colour coding and colour marking.

Nevertheless, to reduce erosion of the glass and graduation marks, we recommend gentle cleaning with detergents of low alkalinity at temperatures below 70°C. Long immersion times are not recommended.

If the glass needs stronger cleaning procedures, we recommend filling the glassware with a mixture of equal parts of a 30 g/l solution of potassium permanganate (KMnO₄) and 1 mol/l solution of sodium hydroxide (NaOH). Two hours of contact with the cleaning mixture should be enough to remove the contamination. Then the residue of MnO₂ can be removed using diluted hydrochloric acid or oxalic acid, followed by distilled water.

All NORMAX glassware undergoes stabilizing thermal treatments at temperatures higher than 500°C. Nevertheless, we do not recommend the users to exceed the temperature of 180°C to dry volumetric instruments. Care should also be taken to avoid thermal shock.

Quality

The product's quality assurance is fundamentally based on the compliance with the applicable European standards (EN) and the international standards (ISO). The production process is controlled in its full extension by sophisticated SPC (statistical process control) system: right since the reception of the raw-materials until the batch release.

Certificate of performance

The Normax volumetric instrument users have at their disposal the most efficient traceability system - the batch number. Each instrument is inefaceably marked with the production batch number. This number will match the one stated on the certificate of performance which is issued based on the inspection results (SPC).

When you receive Normax Glassware you will not need to spend any further time or other resources to mark the instruments, for, thanks to our advanced quality system, we have done it already, specially for you.

Calibration certificate

Issued by Normalab, our independent and accredited laboratory, the measured instrument is individually identified and this number will correspond to the calibration certificate number. In this case, the results stated in the certificate are the values that have been obtained for each item (accreditation certificate at www.normax.pt).

Not finding what you are looking for?

Please contact us at +351 244 572 064

or apoiocliente@normax.pt

Volumetric flask

Ref.	Cap. (ml)	Tol. +/- (ml)	IN	Box
3168607	5	0,025	7/16	1
3168606	5	0,040	10/19	1
3168608	10	0,025	7/16	1
3168609	10	0,040	10/19	1
3168610	15	0,040	10/19	2
3168611	20	0,060	12/21	2
3168612	20	0,040	10/19	2
3168614	25	0,040	10/19	2
3168615	25	0,060	12/21	2
3168617	50	0,060	12/21	2
3168618	50	0,100	14/23	2
3168624	100	0,100	12/21	2
3168626	100	0,100	14/23	2
3168627	150	0,150	14/23	2
3168632	200	0,150	14/23	2
3168636	250	0,150	14/23	2
3168637	300	0,150	14/23	2
3168638	400	0,250	19/26	2
3168644	500	0,250	19/26	2
3168654	1000	0,400	24/29	2
3168663	2000	0,600	29/32	2
3168673	5000	1,200	34/35	1

Class A

Blue printing, available with amber printing

PE-HD stopper, available with glass stopper

Borosilicate 3.3 glass, ISO 1042

Graduated to contain (In)

With certificate of performance

Available: with screw cap; amber glass with white printing; ID stripe available in 7 colours

Available: calibration certificate by NormaLab ISO 17025 accredited laboratory



Measuring cylinder

Ref.	Cap. (ml)	Divis. (ml)	Tol. +/- (ml)	Box
5149607	5	0,1	0,05	2
5149608	10	0,2	0,1	2
5149614	25	0,5	0,25	2
5149617	50	1	0,5	2
5149624	100	1	0,5	2
5149636	250	2	1	2
5149644	500	5	2,5	1
5149654	1000	10	5	1
5149663	2000	20	10	1

Class A

Blue printing, available with amber or white printing

With spout, glass hexagonal base

Borosilicate 3.3 glass, ISO 4788

Graduated to contain (In)

With certificate of performance

Available: with PE-HD stopper

Available: calibration certificate by NormaLab ISO 17025 accredited laboratory



Graduated pipette

Ref.	Cap. (ml)	Divis. (ml)	Tol. +/- (ml)	Delivery time
5434301**	0,1	0,01	0,006	1 - 3
5434303**	0,2	0,01	0,006	1 - 4
5434305*	0,5	0,01	0,006	-
5434311	1	0,01	0,007	5 - 7
5434311F	1	0,10	0,007	5 - 7
5434316*	2	0,01	0,010	-
5434317	2	0,02	0,010	6 - 9
5434316F	2	0,10	0,010	6 - 9
5434324	5	0,05	0,030	8 - 11
5434324F	5	0,10	0,030	8 - 11
5434329	10	0,1	0,05	10 - 13
5434332*	20	0,1	0,1	-
5434334	25	0,1	0,1	11 - 16
5434336	25	0,2	0,1	11 - 16
5434338*	50	0,1	0,25	-
5434339*	50	0,2	0,25	-

* in addition to ISO

** in addition to ISO and graduated to contain

Class A

available in class AS

Type 3, amber printing, available with blue or white printing

Zero at the top, complete delivery

Colour code identification bands according to ISO 1769

Soda-lime glass, ISO 835

Available with Schellbach stripe for best reading accuracy and with safety bulb

With certificate of performance

Available: calibration certificate by NormaLab ISO 17025 accredited laboratory



Volumetric pipette



- || **Class A**
- || Blue printing
- || **Soda-lime glass**
- || Graduated to delivery (Ex)
- || **Each and every volumetric pipette has a colour-code identification border according to ISO 1769**
- || Available with: safety bulb, class AS and class B
- || **With certificate of performance**
- || Available: calibration certificate by NormaLab ISO 17025 accredited laboratory

One mark	Two marks	Cap. (ml)	Tol. +/- (ml)	Colour code	Box
3433719	3433819	0,5	0,005	2 black	5
3433701	3433801	1	0,008	1 blue	5
3433702	3433802	2	0,010	1 orange	5
3433704*	3433804*	2,5	0,012	-	5
3433703*	3433803*	3	0,015	1 black	5
3433705*	3433805*	4	0,015	2 red	5
3433707	3433807	5	0,015	1 white	5
3433706*	3433806*	6	0,015	2 orange	5
3433713*	3433813*	7	0,02	2 green	5
3433711*	3433811*	8	0,02	1 blue	5
3433718*	3433818*	9	0,02	1 black	5
3433708	3433808	10	0,02	1 red	5
3433710*	3433810*	11	0,02	-	5
3433709*	3433809*	15	0,03	1 green	5
3433712	3433812	20	0,03	1 yellow	5
3433714	3433814	25	0,03	1 blue	5
3433715*	3433815*	30	0,03	1 black	4
3433716*	3433816*	40	0,05	1 white	2
3433717	3433817	50	0,05	1 red	2
3433724	3433824	100	0,08	1 yellow	2
3433726*	3433826*	150	0,1	2 black	2
3433736*	3433836*	200	0,15	1 blue	2

* in addition to ISO

Burette



- || **Class AS**
- || Blue printing
- || **Borosilicate 3.3 glass**
- || Waiting time 30s
- || Graduated to delivery (Ex)
- || **With certificate of performance**
- || Available: calibration certificate by NormaLab ISO 17025 accredited laboratory

With flared top	Without flared top	Cap. (ml)	Divis. (ml)
5472816	5432816	2	0,01
5472822	5432822	5	0,02
5472827	5432827	10	0,02
5472834	5432834	25	0,05
5472833	5432833	25	0,10
5472836	5432836	50	0,10
5472839	5432839	100	0,20

- || Available: class B burettes without waiting time; with Schellbach stripe for best reading accuracy
- || We sell rubber pipette fillers and special lubricant for the stopcocks



- || **Class AS**
- || Dr. Schilling type
- || **ISO 385**
- || Graduated tube high resistance borosilicate glass

Ref.	Cap. (ml)	Divis. (ml)	Tol. +/- (ml)	Flask capacity (ml)	Box
3086922	5	0,02	0,01	500	1
3086927	10	0,05	0,03	500	1
3086933	25	0,10	0,05	1000	1
3086936	50	0,10	0,05	1000	1

|| Contact us for other sizes and specifications

Desiccator

Without plate	With porcelain plate	With metal plate	Size (mm)	Box
4906019	49060191	49060192	150	1
4906024	49060241	49060242	200	1
4906031	49060311	49060312	250	1
4906034	49060341	49060342	300	1

Soda-lime glass

With stopcock

Available:
without stopcock,
with rotating sleeve valve.
Separate pieces:
lid, jar, plate
and stopcock



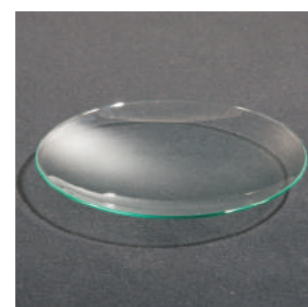
Watch glass

Ref.	Outside diam. (mm)	Box	Ref.	Outside diam. (mm)	Box
4132124	40	10	4132146	100	10
4132132	50	10	4132150	120	10
4132134	60	10	4132152	125	10
4132136	70	10	4132157	150	10
4132141	80	10	4132161	200	10
4132144	90	10	4132166	250	10

DIN 12341

Soda-lime glass

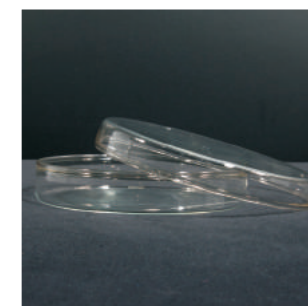
Glazed rims



Petri dish

Soda-lime glass	Box	Borosilicate 3.3 glass	Box	Height x outside diameter (mm)
5058501	40	-	-	12 x 40
5058541	30	-	-	15 x 60
5058543	24	5058643	22	15 x 80
5058546	32	5058646	30	15 x 90
5058544	36	-	-	10 x 100
5058545	36	5058645	36	15 x 100
5058548	36	5058648	34	20 x 100
5058550	72	5058650	68	20 x 120
5058558	36	5058658	34	25 x 150
5058559	6	5058659	5	30 x 180
5058560	6	5058660	5	30 x 200
5058561	6	5058661	5	50 x 200

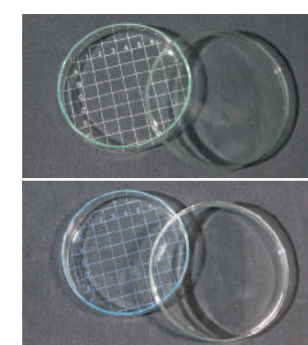
Available with colour code



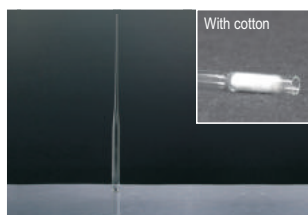
White grid	Blue grid	Height x diam. (mm)	Box
50585011	50585012	12 x 40	40
50585411	50585412	15 x 60	30
50585431	50585432	15 x 80	24
50585461	50585462	15 x 90	32
50585441	50585442	10 x 100	36
50585451	50585452	15 x 100	36
50585481	50585482	20 x 100	36
50585501	50585502	20 x 120	72
50585581	50585582	25 x 150	36
50585591	50585592	30 x 180	6
50585601	50585602	30 x 200	6
50585611	50585612	50 x 200	6

With colour counting grid

Available in other colours



Pasteur pipette



- ||| **Open tip**
- ||| **Soda-lime glass**
- ||| Available neutral glass or cerium soda-lime glass
- customised packing - OEM
- closed tip unplugged and plugged

Unplugged	Plugged	Diam. (mm)	Length (± 10 mm)	Box
5426015	5426015C	6,5 - 8	145 - 150	250
5426023	5426023C	6,5 - 8	225 - 230	250
5426027	5426027C	6,5 - 8	270	250

Separating funnel



- ||| **Conical shape**
- ||| PE-HD stopper
- ||| **Borosilicate 3.3 glass**
- ||| Available spherical, pear and cylindrical shape

Glass key	PTFE key	Needle-valve	Cap. (ml)	IN	Bore	Box
44107	44807	45107	25	14/23	2,5	1
44114	44814	45114	25	19/26	2,5	1
44101	44801	45101	50	14/23	2,5	1
44108	44808	45108	50	19/26	2,5	1
44102	44802	45102	100	14/23	2,5	1
44103	44803	45103	100	19/26	2,5	1
44110	44810	45110	250	19/26	4	1
44104	44804	45104	250	29/32	4	1
44111	44811	45111	500	19/26	4	1
44105	44805	45105	500	29/32	4	1
44112	44812	45112	1000	24/29	6	1
44106	44806	45106	1000	29/32	6	1
44113	44813	45113	2000	29/32	6	1

Beaker



- ||| **With spout, graduated**
- ||| **Borosilicate 3.3 glass**
- ||| ISO 3819
- ||| Available: double scale, soda-lime glass, bell or conical shape

Low form	Tall form	Cap. (ml)	Box
2110107N	-	5	10
2110108N	-	10	10
2110614N	2111614N	25	10
2110617N	2111617N	50	10
2110624N	2111624N	100	10
2110629N	2111629N	150	10
2110636N	2111636N	250	10
2110641N	2111641N	400	10
2110648N	2111648N	600	10
2110653N	2111653N	800	10
2110654N	2111654N	1000	10
2110663N	2111663N	2000	10
2110668N	2111668N	3000	1
2110673N	-	5000	1
2110686N	-	10000	1

Erlenmeyer flask



- ||| **Graduated**
- ||| **Borosilicate 3.3 glass**
- ||| ISO 1773
- ||| Available: standard ground joint with or without plastic stopper, screw-cap and with glass stopper for iodine determination

Wide neck	Narrow neck	Cap. (ml)	Box
2122614N	2121614N	25	10
2122617N	2121617N	50	10
2122624N	2121624N	100	10
2122632N	2121632N	200	10
2122636N	2121636N	250	10
2122639N	2121639N	300	10
2122644N	2121644N	500	10
2122654N	2121654N	1000	10
2122663N	2121663N	2000	10
2122668N	2121668N	3000	1
2122673N	2121673N	5000	1

Flask

Wide neck	Narrow neck	Cap. (ml)	Box
2173117N	2171117N	50	10
2173124N	2171124N	100	10
2173136N	2171136N	250	10
2173144N	2171144N	500	10
2173154N	2171154N	1000	10
2173163N	2171163N	2000	10
2173168N	2171168N	3000	1
2173171N	2171171N	4000	1
2173173N	2171173N	5000	1
-	2171176N	6000	1
-	2171186N	10000	1

|| Flat bottom

|| Borosilicate 3.3 glass

|| ISO 1773, DIN 12380

|| Available with round bottom and with standard ground joint



Crystallising dish

Borosilicate glass	Soda-lime glass	Cap. (ml)	Diam. x height (mm)	Box
2131124	4470524	20	40 x 25	10
2131132	4470532	40	50 x 30	10
2131134	4470534	60	60 x 35	10
2131138	4470538	100	70 x 40	10
2131141	4470541	150	80 x 45	10
2131144	4470544	300	95 x 55	10
2131149	4470549	500	115 x 65	10
2131154	4470554	900	140 x 75	10
2131159	4470559	2000	190 x 90	10
2131163	4470563	3500	230 x 100	10
-	4470572	5000	250 x 120	10

|| With spout

|| Available:
- without spout
- with cover
- pressed
- soda-lime glass



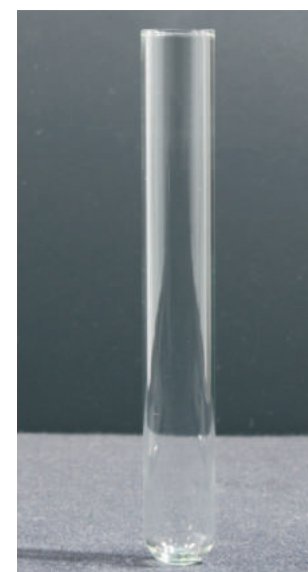
Test tube

0,60 mm	0,80 mm	1,00 mm	Outside diam. x height (mm)	Box
3160201	3160301	-	8 x 70	100
-	3160311	-	9 x 65	100
3160202	3160302	-	10 x 75	100
3160203	3160303	-	10 x 100	100
3160204	3160304	-	12 x 75	100
3160205	3160305	-	12 x 100	100
3160213	3160313	-	12 x 120	100
-	3160315	-	15 x 100	100
-	3160316	-	15 X 125	100
3160214	3160314	-	15 x 150	100
3160206	3160306	-	16 x 100	100
-	3160317	-	16 x 150	100
3160207	3160307	-	16 x 160	100
3160208	3160308	3260308	18 x 180	100
3160209	3160309	3260309	20 x 150	100
3160210	3160310	3260310	20 x 200	100

|| Soda-lime glass

|| Rimless

|| Available:
- flat bottom
- with rim
- borosilicate 3.3 glass
- neutral glass



|| Contact us for other crystallising dishes or tubes sizes and specifications

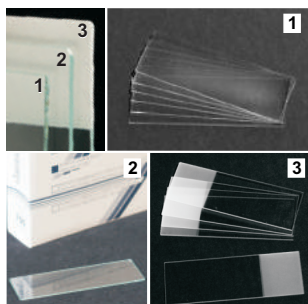
Water distiller



- ||| Model L304
- ||| **Distillate output 4 litre/hour**
- ||| Automatic control system
- ||| **Quartz heater**
- ||| **Borosilicate 3.3 glass components**
- ||| Easy maintenance
- ||| Compliance with EU directive

Ref.	Feature
520	complete
70007	switch on / off
9065008	tank
9200000	resistance in quartz tube
70019	power warning signal
70003	resistance fixation seal and GL 45 thread cap
70004	clamps
70020	protection pressure switch
9065007	cooling coil
70018	water circulation tubes
70022	tank cover cap
70023	levelling tube fixation seal and GL 25 thread cap
70012	water admission tube
70013	water valve
70016	metallic structure
70005	electric plug
9065006	levelling tube

Microscope slide



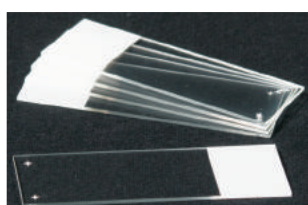
- ||| **Thickness 0,95 - 1,05 mm**
- ||| 76 x 26 mm, ISO 8037-1
- ||| On request tropical packing (slides individually paper interleaved)

Ref.	Edges	Box
5470108A	1. cut edges	100
5470208A	2. ground edges	100
5470308A	3. ground edges, frosted end 20 mm	100



- ||| Normafrost slide
- ||| **76 x 26 mm**

Ref.	Angle	Colour	Box
5471001	90°	white	50
5471002	45°	white	50
5471003	90°	orange	50
5471004	45°	orange	50
5471005	90°	green	50
5471006	45°	green	50
5471007	90°	pink	50
5471008	45°	pink	50
5471009	90°	blue	50
5471010	45°	blue	50
5471011	90°	yellow	50
5471012	45°	yellow	50



- ||| Normafrost slide
- ||| **76 x 26 mm**

Ref.	Edges	Box
5471101	positive charged	72
5471201	Polysine® pre-coated	72
5471301	silane pre-coated	72

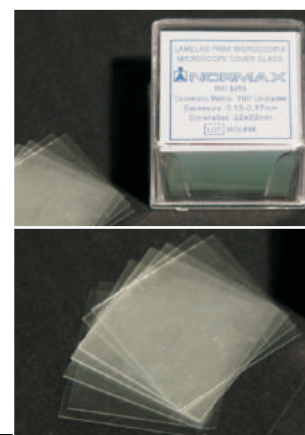
Microscope cover glass

Ref.	Length x width (mm)	Box	Ref.	Length x width (mm)	Box
5470024	10 x 10	100	5470022	22 x 60	100
5470001	12 x 12	100	5470023	22 x 64	100
5470002	12 x 23	100	5470006A	24 x 24	10 x 100
5470003A	18 x 18	10 x 100	5470007A	24 x 32	10 x 100
5470010	18 x 24	100	5470014	24 x 36	100
5470004A	20 x 20	10 x 100	5470015A	24 x 40	5 x 100
5470020	20 x 24	100	5470008A	24 x 50	5 x 100
5470011	21 x 26	100	5470016A	24 x 60	5 x 100
5470005A	22 x 22	10 x 100	5470017	25 x 40	100
5470012	22 x 32	100	5470018	25 x 50	100
5470013	22 x 40	100	5470019	25 x 60	100
5470021A	22 x 50	10 x 100			

Thickness 0,13 - 0,17 mm

ISO 8255-1

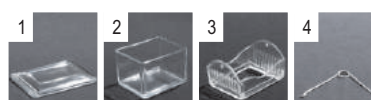
Optical glass



Staining jar

Ref.	Feature	For slides	Box
4430900	complete	10	1
4430901	1 cover	-	1
4430902	2 dish	-	1
4430903	1 2 cover and dish	-	1
4430907	3 glass tray	10	1
4430905	4 metal handle	-	1
4430904	3 4 glass tray, metal handle	10	1

Available:
- Schiefferdecker
- Coplin
- Hellendahl



Funnel

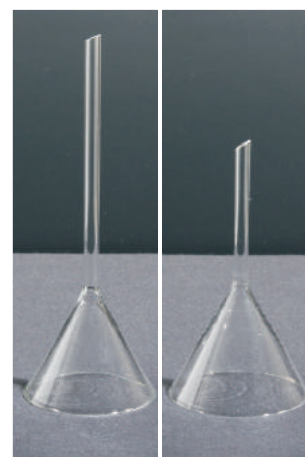
Short stem	Long stem	Glass	Top outside diam. (mm)
3135120*	-	Borosilicate 3.3	30
3135123	-	Borosilicate 3.3	35
3135125*	-	Borosilicate 3.3	40
3135128	3135328	Borosilicate 3.3	45
3135130*	3135330	Borosilicate 3.3	50
3135133	3135333	Borosilicate 3.3	55
3135137*	-	Borosilicate 3.3	60
3135138	3135338	Borosilicate 3.3	70
3135140*	-	Borosilicate 3.3	75
3135141	3135341	Borosilicate 3.3	80
3135143*	-	Borosilicate 3.3	85
3135146	3135346	Borosilicate 3.3	100
3135147*	-	Borosilicate 3.3	110
3135148*	-	Borosilicate 3.3	120
3135157	-	Soda.	150
3135159*	-	Soda.	180
3135161	-	Soda.	200
3135166	-	Soda.	250
3135169*	-	Soda.	300

* non ISO

Short and long stem

ISO 4798

Available funnels:
- for powder
- with porous plate
- Büchner



Kitasato flask



- ||| Borosilicate 3.3 glass
- ||| With hose connection
- ||| Available Kitasato bottle

Ref.	Cap. (ml)	Box
2120124N	100	10
2120136N	250	10
2120144N	500	10
2120154N	1000	10
2120163N	2000	10

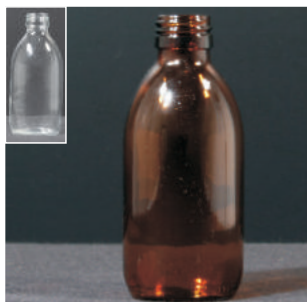
Filtration set



- ||| Beaker, funnel and clamp
- ||| Available rubber stoppers with hole

Ref.	Feature	Box
9060001	complete	1
9060027	beaker, graduated body	1
9060028	funnel, porous plate G3	1
6507003	clamp	1

Screw neck bottle



- ||| PP 28
- ||| Soda-lime glass
- ||| Available with PP18

Amber glass	Clear glass	Cap. (ml)	Box amber glass	Box clear glass
4040016	-	30	117	-
4040007	4040014*	60	160	7620
4040006	4040011	100	104	86
-	4040013	125	-	4160
4040004	-	200	67	-
4040003	4040008	250	60	60
4040002	4040009	500	35	1750
4040001	4040010	1000	20	480

*127 unidades por caixa



- ||| For pharmaceutical industry
- ||| Neutral glass
- ||| Other sizes and specifications on request

Ref.	Diam. x height (mm)	Colour - hydrolytic class	Box
3401658	16,75 x 58	amber - II	418
3402452	24,00 x 52	amber - II	168
3402448	24,50 x 48	amber - II	180

Dropping bottle



- ||| Amber glass
- ||| Screw cap, pipette and rubber sucker

Ref.	Cap. (ml)	Box
4121812	10	1
4121813	15	1
4121814	20	1
4121815	30	1
4121817	50	1
4121824	100	1

Laboratory bottle

PP blue screw cap autoclavable up to 140°C	PP red screw cap autoclavable up to 180°C	Cap. (ml)	GL	Box
21801145	21802145	25	25	10
21801175	21802175	50	32	10
21801245	21802245	100	45	10
21801365	21802365	250	45	10
21801445	21802445	500	45	10
21801545	21802545	1000	45	10
21801635	21802635	2000	45	10
21801735	21802735	5000	45	6
21801865	21802865	10000	45	1

ISO 4796

Borosilicate 3.3 glass

Retrace code

Available: amber glass

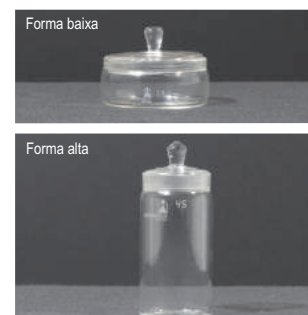


Weighing bottle

Low form	Tall form	Cap. (ml)	Diam. x height (mm)	Box
-	3421107	3,5	10 x 80	1
-	3421113	10	25 x 40	1
3421023	-	15	35 x 30	1
-	3421118	20	30 x 50	1
3421032	-	30	50 x 30	1
-	3421123	45	35 x 70	1
-	3421124	70	40 x 80	1
3421041	-	80	80 x 30	1

DIN 12605

Borosilicate 3.3 glass



Weighing boat

Ref.	Cap. (ml)	Box	Ref.	Cap. (ml)	Box
9065088	3	1	9065174	15	1
9065090	5	1	9065175	20	1
9065091	10	1	9065176	25	1

Borosilicate 3.3 glass



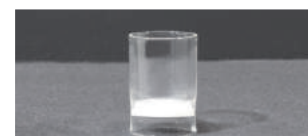
Filter crucible

Ref.	Porosity	Cap. (ml)	Identif.	Plate diam. (mm)	Box
258510X	1 - 4	8	63D	20	1
258511X	1 - 4	15	10D	23	1
258512X	1 - 4	30	1D	30	1
258513X	1 - 4	50	2D	40	1

Replace "X" by the required porosity

Ref.	Porosity	Cap. (ml)	Plate diam. (mm)	Box
9065115	2	30	30	1

Borosilicate 3.3 glass



Alcohol lamp

Ref.	Cap. (ml)	Outside diam. (mm)	Box
4169424	100	70	1

Soda-lime glass



Chromatography column



- ||| Without sintered glass-disc
- ||| Available with sintered glass-disc: add the required porosity to the reference code
- ||| Borosilicate 3.3 glass

Glass key	PTFE key	Internal diam. (mm)	Eff. length (mm)	Box
3437000	3447000	10	100	1
3437001	3447001	10	200	1
3437009	3447009	15	200	1
3437003	3447003	15	400	1
3437002	3447002	20	200	1
3437004	3447004	20	400	1
3437005	3447005	20	600	1
3437006	3447006	30	400	1
3437007	3447007	30	600	1
3437008	3447008	40	800	1

BOD bottle



- ||| Borosilicate 3.3 glass
- ||| Interchangeable stopper

- ||| For incubating diluted samples of clean water, waste water, effluent water and polluted water during the 5 day biochemical oxygen demand (BOD) test. This test is used to determine the relative oxygen requirements of the tested sample.

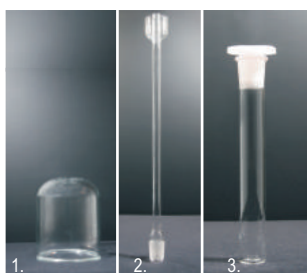
Ref.	Cap. (mm)	Box
9060067	300	1



- ||| Borosilicate 3.3 glass
- ||| Interchangeable stopper

Ref.	Cap. (mm)	Box
9060066	165	1
9060049	292	1

COD set



- ||| Digestion set COD (Chemical Oxygen Demand)

Ref.	Feature	Outside diam. x height (mm)
9065099	1. chimney/bell jar for cooling tube	
9065097	2. IN 29/32 cooling tube	15 x 430
9065098	3. COD tube	40 x 200

Digestion tube



- ||| Round bottom
- ||| with rim

Ref.	Outside diam. x height (mm)	Ref.	Outside diam. x height (mm)
5436150	36 x 135	5452000	54 x 520
5436330	36 x 330	5455000	54 x 550
9065070	42 x 298	5460000	54 x 600
9065080	42 x 500	5474000	54 x 740
5445000	54 x 450	5475000	54 x 750
5446000	54 x 460	5490000	54 x 900
5450000	54 x 500	5401050	54 x 1050



NORMAX

www.normax.pt



Glassware



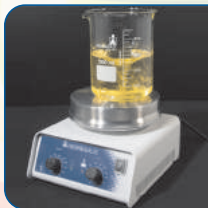
Plastic ware



Liquid handling



Reagents and culture media



Laboratory equipment



Sample collection



Surgery



Clinical furniture



Hygiene and protection



Laboratory Instruments



Technical support



NORMALAB
Normax Calibration Laboratory for Volumetric Glassware

General Sales Conditions

Validity: Net prices - currency Euro - Ex-Works.
Valid until 31st December 2016.

Prices can be revised prior to that date for raw material unexpected price increase.

Orders: Below Eur. 500,00 we will charge Eur. 50,00 for handling and administrative work.

Delivery: A variation of 15% in the ordered quantities may occur for production reasons.

Payment conditions: To be agreed.

Packing: Standard cardboard boxes.

The use of wooden pallets in addition to standard packing will be charged at Eur. 6,00 per pallet.

Complaint: Accepted only in a stated period of 15 days after the receipt of merchandise and when sent in writing.

Returns: The return of goods shall not be accepted if not previously approved by our services.

The freight charges of the returned goods will be at the customer's expense, unless the error or defect is our responsibility.

Yet, in this case, we will only accept shipments made by our forwarders or appointed by us.

Special products manufactured according to customer's specifications cannot be returned.



www.normax.pt

Rua Santa Isabel, 17 - 2430-475 Marinha Grande - Portugal

P.O. Box 23 - 2431-955 Marinha Grande - Portugal

tel. +351 244 572 062 | fax +351 213 516 246

Exports' e-mails: dalia@normax.pt | elia.mira@normax.pt | manuela.matzeu@normax.pt | samuel@normax.pt

