

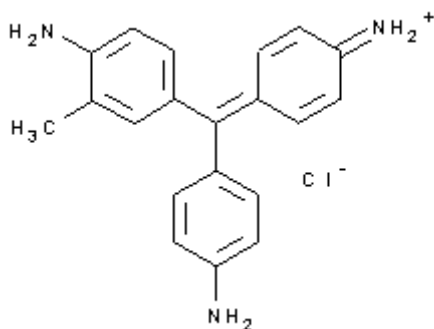


PRODUCT CODE: 251332

Fuchsin Basic (C.I. 42510) for clinical diagnosis
for microscopy, nucleus and Koch's bacilli staining

$C_{20}H_{20}ClN_3$

$C_{20}H_{20}ClN_3$



M.= 337,85

CAS [632-99-5]

EINECS 211-189-6

TARIC 3204 13 00 90

SYNONYMS: Basic Violet 14, Fuchsin, Magenta I, Rosaniline Chloride

PHYSICAL DATA: crystalline powder, Dark green, Soluble in water 5 g/l at 25 °C Soluble in ethanol 30 g/l Thermal decom. ~ 235 °C • pH(1 g/l) 5 - 6 •

BIBLIOGRAPHY: Merck Index **12**, 5.686 13, 5.674 Safety **2**, **339 A** • Conn's **IX** 260, 582 • Beilstein **12**, **IV**, **2290** • USP **41** •

HAZARDOUS: RTECS: CX 9850000 •



H: H350 •

P: P201 • P202 • P281 • P308+P313 • P405 • P501 •

SPECIFICATIONS:

Identity :	
Identity	IR passes test
Ratio I _{max} . P +/-15 nm	1,16 - 1,35
A 1% , 1 cm, λ _{max} .	>1600
λ _{of max} . ABS in C ₂ H ₅ OH 50%	549 - 552 nm
T.L.C.	passes test
Maximum limit of impurities	
Loss on drying at 135°C	15%

Ed.: 1 . Vig.: 15.01.2011 .

Prod.: 251332