

## 1. Product: Cell Floater

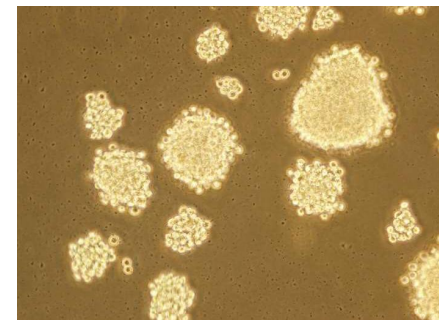
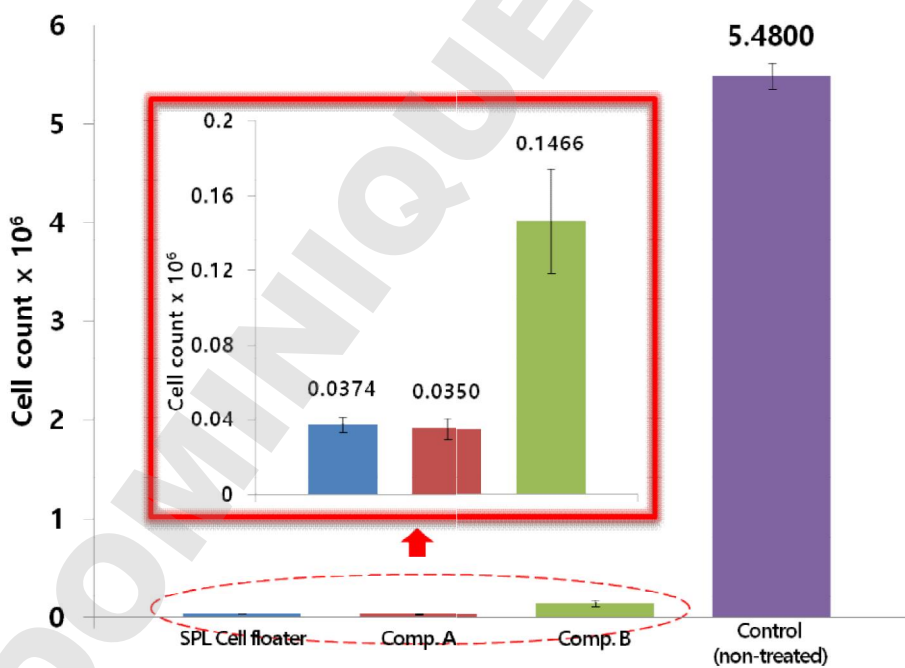
SPL3D™ Cell Floater is a culture vessel that provides an optimized environment for 3D cell culture. The culture vessel, which is effective for the formation of spheroids of animal cells, does not require any special incubation techniques, and thus 3D cell culture can easily be implemented in the same way as conventional 2D culture.



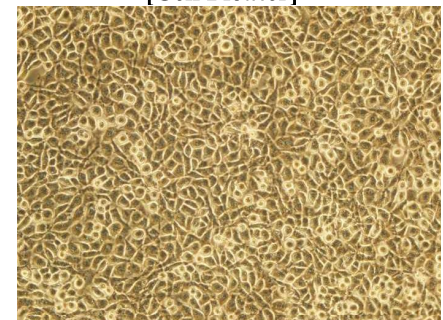
## 2. Experimental condition

- 1) Cell line: L-929 (mouse fibroblast)
- 2) Cell No.:  $5 \times 10^4$  cell/ml
- 3) Media: 10% FBS in RPMI1640
- 4) Culture condition: 37°C, 5% CO<sub>2</sub>

## 3. Results



[Cell Floater]



[Control, non-treated dish]

Figure 1. Minimized cell attachment of SPL3D™ Cell Floater

#### 4. Conclusion

SPL3D™ Cell Floater showed a minimized cell attachment performance similar to that of the competitors’.

#### 5. Ordering Information

Cat. No.	Material	Type	Internal Dimension (mm)	Growth Area (cm <sup>2</sup> )	Working Volume (ml)	External Grip	Packaging
26035	PS	35.00 x 10.00	35.00 x 9.60	9.40	3.00	+	10/20
26060	PS	60.00 x 15.00	52.80 x 12.80	21.50	5.00	+	10/20
26100	PS	90.00 x 20.00	86.26 x 17.70	57.50	12.50	-	10/10

[www.spllifesciences.com](http://www.spllifesciences.com)

For technical assistance, contact SPL R&D Center at:

Tel: +82-31-533-4800; Fax: +82-31-533-1430; e-mail: [spl@ispl.co.kr](mailto:spl@ispl.co.kr)

To place an order, contact your local distributor or

Tel: +82-31-533-4800; Fax: +82-31-533-1430; e-mail: [business@ispl.co.kr](mailto:business@ispl.co.kr)