

Confocal Dish & Plate

(#100350/100351/101350/102350/103350/200350/210350/211350/212350/213350/30106/30206
230106/230206)

1. Description

SPL's confocal products allow researchers to acquire high resolution microscopic images of cells in 35 mm culture dishes or 6 well plates. Low auto-fluorescence surface materials were used; ideal for confocal microscopy, phase contrast microscopy, live cell imaging and micro-manipulations.

Surface materials for Confocal products

Glass: naturally charged, good growth surface for adherent cells

FLux: surface modified plastic film (188 µm thick), optimal for confocal microscopy

2. Features

- ❖ Crystal grade polystyrene
- ❖ Dish size: 35 mm
- ❖ Hole size: 13 Ø or 20 Ø
- ❖ Plate size: 6 well plate (Cat. No. 30106, 30206, 230106, 230206)
- ❖ Glass bottom thickness: 0.13 ~ 0.16 mm
- ❖ FLux bottom thickness: 0.18 ~ 0.19 mm

3. Functional Test

Sterility	:	Passed
Cytotoxicity	:	Passed
Non-Pyrogenic	:	Passed
RNase/DNase Free	:	Passed
DNA free	:	Passed

4. Product Range

Cat.No.	Type	Color	Material	External Dimension (mm)	Internal Dimension (mm)	Hole (mm)	Confocal Region (cm ²)	Working Volume (ml)	External Grip	Surface Treatment	Sterile	Packaging
100350	Adhesion	Clear	PS/Glass	35.00 x 10.00	34.30 x 9.30	13Ø	1.33	3	+	-	+	5 / 100
100351	Insert	Clear	PS	35.00 x 10.00	34.30 x 9.30	-	-	3	+	-	+	10 / 500
101350	Adhesion	Clear	PS/Glass	35.00 x 10.00	34.30 x 9.30	20Ø	3.14	3	+	-	+	5 / 100
102350	Adhesion	Black	PS/Glass	35.00 x 10.00	34.30 x 9.30	13Ø	1.33	3	+	-	+	5 / 100
103350	Adhesion	Black	PS/Glass	35.00 x 10.00	34.30 x 9.30	20Ø	3.14	3	+	-	+	5 / 100
200350	Adhesion	Clear	PS/Glass	35.00 x 10.00	34.30 x 9.30	13Ø	1.33	3	+	+	+	5 / 50
210350	Adhesion	Clear	PS/FLux	35.00 x 10.00	34.30 x 9.30	13Ø	1.33	3	+	+	+	5 / 50
211350	Adhesion	Clear	PS/FLux	35.00 x 10.00	34.30 x 9.30	20Ø	3.14	3	+	+	+	5 / 50
212350	Adhesion	Black	PS/FLux	35.00 x 10.00	34.30 x 9.30	13Ø	1.33	3	+	+	+	5 / 50
213350	Adhesion	Black	PS/FLux	35.00 x 10.00	34.30 x 9.30	20Ø	3.14	3	+	+	+	5 / 50
30106	Adhesion	Clear	PS/Glass	85.40 x 127.60	35.00/well	13Ø	1.33	3		-	+	1 / 4
30206	Adhesion	Clear	PS/Glass	85.40 x 127.60	35.00/well	20Ø	3.14	3		-	+	1 / 4
230106	Adhesion	Clear	PS/FLux	85.40 x 127.60	35.00/well	13Ø	1.33	3		+	+	1 / 4
230206	Adhesion	Clear	PS/FLux	85.40 x 127.60	35.00/well	20Ø	3.14	3		+	+	1 / 4

5. Certification

SPL Life Sciences hereby certifies that the product identified above, inspected to be in compliance with product quality specification and requirements as documented in our ISO 9001:2015 Quality Management System (K-QA-Q031478) in Korea.

6. Specifications & Technical Drawing

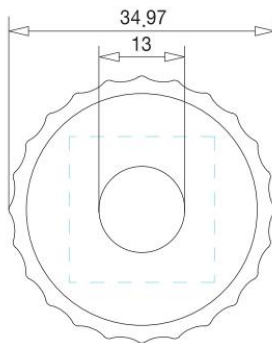
(1) Confocal Dish Glass bottom (# 100350/100351/101350/102350/103350/200350)

- Specifications

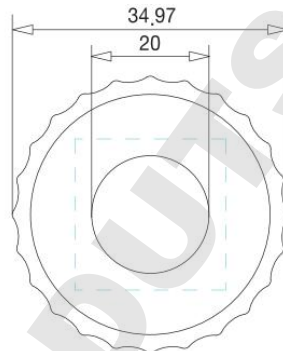
Lid		Dimensions		Material (Resin)	Packaging
		Dish	Hole		
Diameter _{Outer} :	40.30 mm	Diameter _{Grip} :	40.30 mm	Crystal-grade polystyrene (PS)	<ul style="list-style-type: none"> • Pieces/Sleeve: 5 • Pieces/Case: 100 (# 200350: 50)
Diameter _{Inner} :	39.00 mm	Diameter _{Outer} :	36.14 mm		
Height:	6.00 mm	Diameter _{Inner} :	34.97 mm		
		Height:	10.90 mm		
		Growth Area:	9.40 cm ²		
			Hole		
			13 Ø		
			or		
			20 Ø		

- Technical Drawing

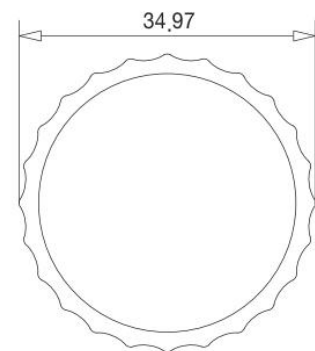
100350/102350/200350



101350/103350



100351



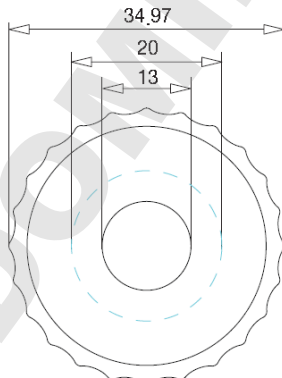
(2) Confocal Dish FLux bottom (#210350/211350/212350/213350)

- Specifications

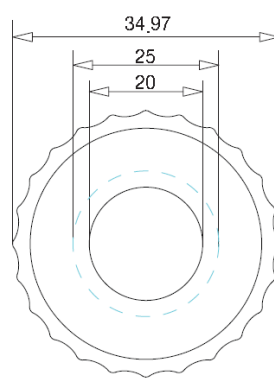
Lid		Dimensions		Material (Resin)	Packaging
		Dish	Hole		
Diameter _{Outer} :	40.30 mm	Diameter _{Grip} :	40.30 mm	Crystal-grade polystyrene (PS)	<ul style="list-style-type: none"> • Pieces/Sleeve: 5 • Pieces/Case: 50
Diameter _{Inner} :	39.00 mm	Diameter _{Outer} :	36.14 mm		
Height:	6.00 mm	Diameter _{Inner} :	34.97 mm		
		Height:	10.90 mm		
		Growth Area:	9.40 cm ²		
			Hole		
			13 Ø		
			or		
			20 Ø		

- Technical Drawing

210350/212350



#211350/213350

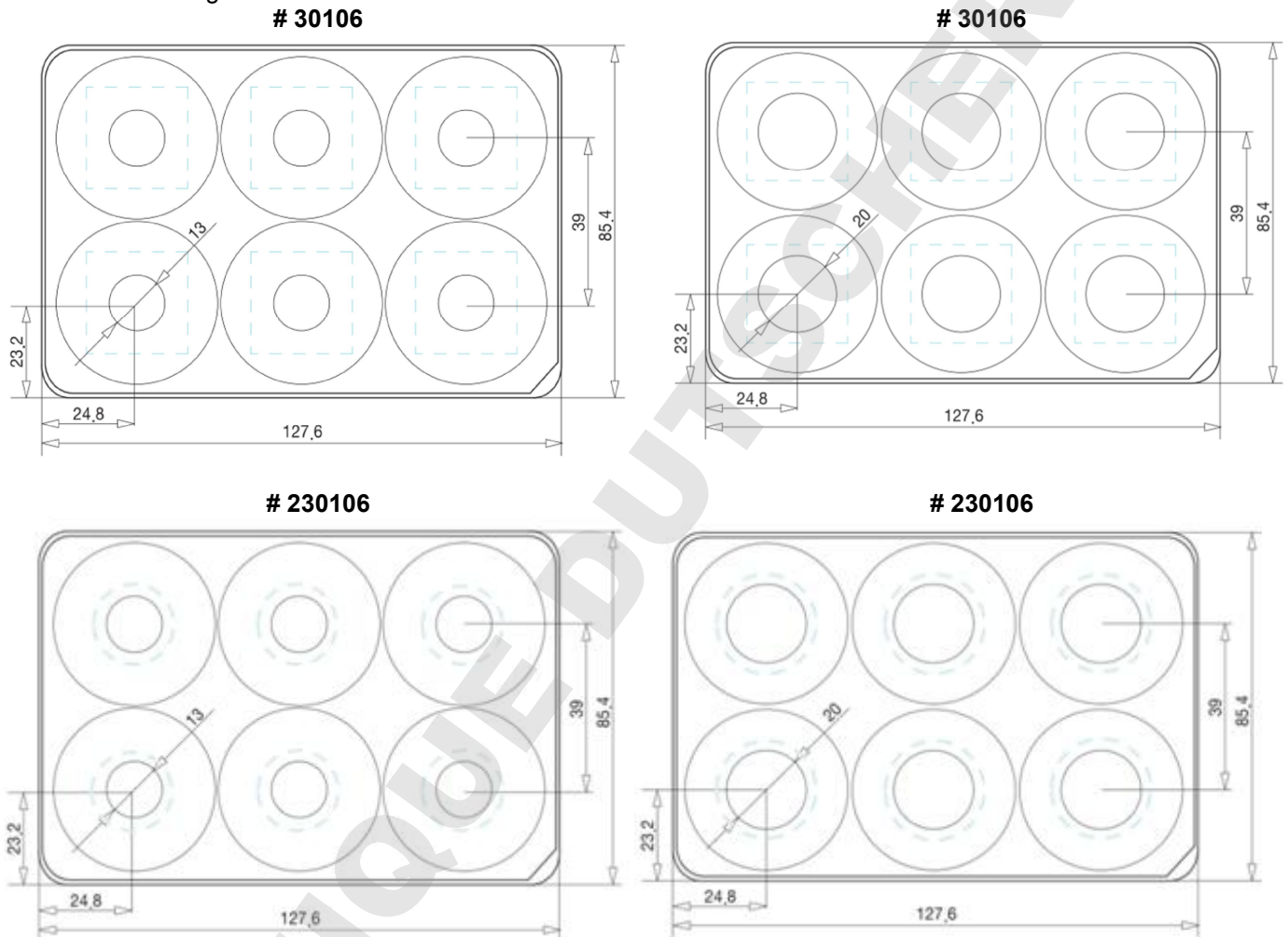


(3) Confocal Plate 6 Well (# 30106/30206/230106/230206)

- Specifications

Lid		Dimensions		Well		Material (Resin)	Packaging
		Plate					
Length:	84.90 mm	Length:	85.40 mm	Diameter:	35.00 mm	Crystal-grade polystyrene (PS)	<ul style="list-style-type: none"> • Pieces/Sleeve: 1 • Pieces/Case: 4
Width:	127.10 mm	Width:	127.60 mm	Depth:	17.40 mm		
Height:	10.00 mm	Height:	20.20 mm	Center to Center:	39.00 mm		
		Growth Area:	9.60 cm ²	Hole:	13 or 20 Ø		

- Technical Drawing



www.spllifesciences.com

For technical assistance, contact SPL R&D Center at:
 Tel: +82-31-533-4800; Fax: +82-31-533-1430; e-mail: spl@ispl.co.kr
 To place an order, contact your local distributor or
 Tel: +82-31-533-4800; Fax: +82-31-533-1430; e-mail: business@ispl.co.kr

SPL-TDS-CDP

For Research Use Only. Not intended for use in diagnostic or therapeutic procedures.
 © SPL Life Sciences Co., Ltd., Version 6, November 20th, 2018