

Universal Carousel Pipette Stand

Pipettes never looked so good, on your bench top

Hold and store pipettes in style with the new universal carousel pipette stand that holds up to 8 single channel, 4 multi channel, or a combination of both pipettes. A sleek and modern design enables this stand to securely hold virtually every known brand of pipette in the marketplace making it truly 'universal' while adding a pop of color to a bench top. Inserts on the upper holders can be added or removed to accommodate the fit of different pipette widths. One handed removal or replacement of pipettes is made easy with a rotating head and stable weighted base. Moving the stand while keeping pipettes in place is simple with a quick grip handle allowing a user to grab and go. The pipette carousels come with additional upper leaves to enable multiple color coding configuration options as well as a change in color to your work space, for a bit more fun.

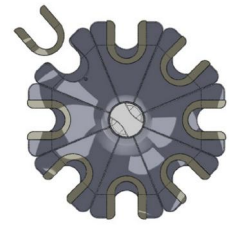
- Ideal for labs that do not wish to be tied into a specific brand of pipette, or already have multiple brands in use
- Weighted base allows for easy removal or replacement of pipettes, with one hand
- Pipettes are held in a vertical position to help prevent contamination
- Conveniently rotate stand head to select or store pipettes
- Quick grip handle to move pipette stand (loaded or unloaded)
- Assorted color options allow for color coding pipette location:
Blue/Green; Purple/Clear; Assorted/Clear
- The unit is not autoclavable but can be cleaned with soap/water or common laboratory disinfectants
- Made of ABS (Acrylonitrile Butadiene Styrene)
- US Patent Pending



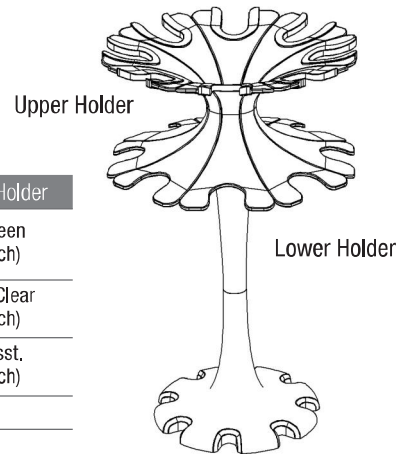


Assorted color option allows for color coding pipette location

Holds up to 8 single channel, or 4 multi channel pipettes, or a combination of both



Inserts on the upper holders can be added or removed to accommodate the fit of different pipette widths



| Part No. | H x W | Qty. | Color | Lower Holder | Upper Holder |
|----------|---|------|--|--------------|--------------------------|
| HS120480 | Base 6.2 W in; Top 9 in; Height 16.1 in (Base 15.8 W cm; Top 22.9 W cm; 40.8 H cm) | 1/ea | Blue/Green ■ ■ | Blue (8) | Blue/Green (8 of each) |
| HS120481 | Base 6.2 W in; Top 9 in; Height 16.1 in (Base 15.8 W cm; Top 22.9 W cm; 40.8 H cm) | 1/ea | Purple/Clear ■ □ | Purple (8) | Purple/Clear (8 of each) |
| HS120499 | Base 6.2 W in; Top 9 in; Height 16.1 in (Base 15.8 W cm; Top 22.9 W cm; 40.8 H cm) | 1/ea | Assorted/Clear ■ ■ ■ ■ ■ ■ ■ □ * | Clear (8) | Clear/Asst. (8 of each) |

*Assorted colors (Purple, Yellow, Red, Orange, Green, Grey, Clear and Blue)