



Erythrocyte Sedimentation Rate

# E·S·R

## SYSTEMS

*The safest & easiest*  
*Autozero Westergren ESR*  
*products on the market.*

## **The safest & easiest** *Autozero Westergren ESR* *products on the market.*

The **Erythrocyte Sedimentation Rate (ESR)** is a non-specific test that alerts physicians to the possible presence of inflammation or abnormality in the body. The ESR is determined by measuring, in millimeters per hour, the distance red cells have fallen after separating from the plasma in a vertical sed-rate pipette.

Globe Scientific ESR products are the only systems that are completely closed, thereby offering the highest degree of safety.

### **Sedi-Rate™ Directions For Use**



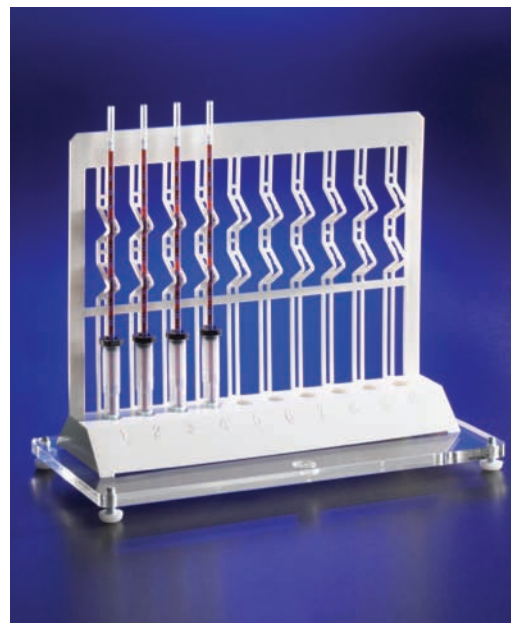
Add 1mL of EDTA-treated blood to the Sedi-Rate vial. (Pictured above using the optional piercing funnel and ESR transfer pipette). Invert several times to mix.



Insert the pipette through the pierceable stopper. Then, using continuous force, push the pipette down to the bottom of the vial.



The blood automatically rises into the pipette and stops at the zero mark.



Place the test unit in the rack. At the end of 60 minutes, the numerical results can be read directly from the imprinted scale on the pipette.

## Sedi-Rate™ E.S.R. System



*The use of Sedi-Rate™ eliminates splashing, spraying and aerosol hazards, making it an optimum choice for ESR testing in the laboratory.*

- Westergren method
- Easy to use
- Closed system for optimal safety
- Shatter-proof plastic components
- Accurate and reproducible results
- Patented pierceable stopper
- Fibrous barrier protects user from hazardous aerosols
- CLIA waived test



*Aerosol barrier plug*



*Self-sealing stopper*

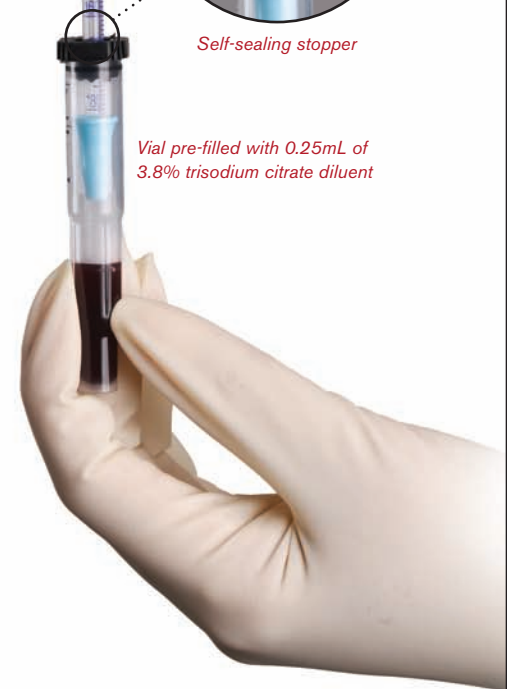
**Sedi-Rate** offers a simple, safe, economical and highly-accurate method for performing Westergren ESR determinations.

The polystyrene Sedi-Rate pipette is graduated from 0 to 180mm and features a unique fibrous plug located at the zero mark. The plug is specifically designed to be a self-sealing aerosol barrier that stops hazardous substances from escaping through the top of the pipette.

The polypropylene Sedi-Rate vial features a patented self-sealing stopper that is easily pierced with a transfer pipette or piercing funnel. The vial is supplied pre-filled with 0.25mL of 3.8% trisodium citrate diluent. Simply add 1mL of EDTA-treated blood to complete the 1 to 4 ratio as required by the Westergren method.

### Ordering Information

| Item# | Description  | Unit |
|-------|--|------|
| 3469  | Sedi-Rate ESR System, 100 tests per box  | 100  |
| 3469B | Sedi-Rate ESR System, 1000 tests per case (100/box, 10 boxes/case)   | 1000 |
| 3467  | Sedi-Rate ESR System Starter Kit: 100 Sedi-Rate pipettes and vials, 10-place rack with pipette support clamps, leveling platform, 100 piercing funnels and 100 ESR transfer pipettes | Case |
| 3452  | 10-place rack with pipette support clamps  | Each |
| 3472  | 10-place polystyrene rack  | Each |
| 3459  | Acrylic leveling platform  | Each |
| 3475  | Piercing funnels   | 200  |
| 3476  | ESR transfer pipettes  | 500  |



*Vial pre-filled with 0.25mL of 3.8% trisodium citrate diluent*

## Sedigren™ E.S.R. System



*The use of Sedigren™ eliminates splashing, spraying and aerosol hazards, making it an optimum choice for ESR testing in the laboratory.*

- Westergren method
- Easy to use
- Unique pipette eliminates user error and air bubble formation
- Completely closed system for optimal safety
- Accurate and reproducible results
- Shatter-proof plastic components
- CLIA waived test

**Sedigren** offers a unique approach to performing simple, safe, economical and highly accurate Westergren ESR determinations.

The polystyrene Sedigren pipette is graduated from 0 to 160mm and features a special piston located inside the pipette. The piston is designed to use a syringe-like action to draw the blood up to the zero mark. This method eliminates user error and the possibility of air bubble and aerosol formation.

The polypropylene Sedigren vial features a removable stopper that is easily pierced with a transfer pipette. The vial is supplied pre-filled with 0.25mL of 3.8% trisodium citrate diluent.

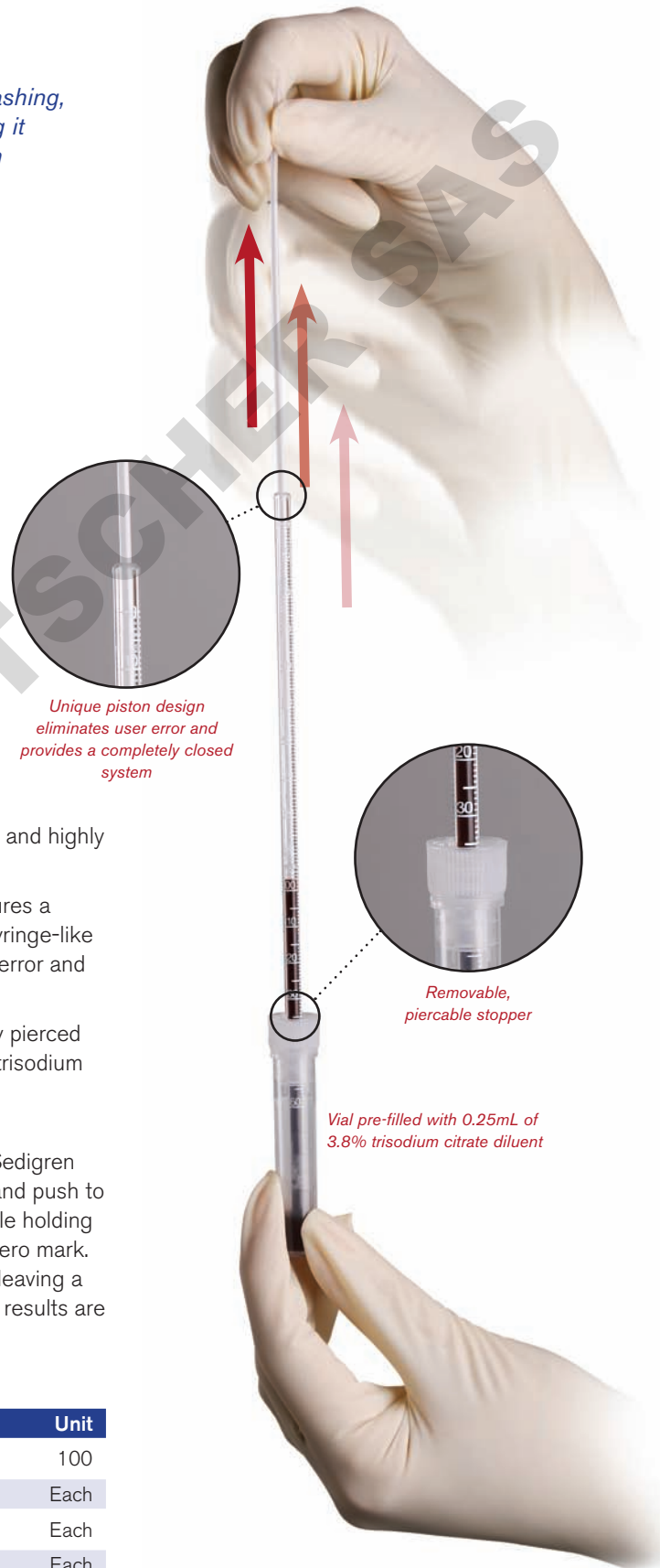
### **Sedigren directions for use:**

To perform the ESR test, simply add 1mL of EDTA-treated blood into the Sedigren vial and invert several times to mix. Insert the pipette through the stopper and push to the bottom of the vial. Place the test unit in the appropriate rack. Then, while holding the pipette down, pull up on the plastic piston until the blood reaches the zero mark. If desired, continue pulling until the piston snaps off at its prescored mark leaving a residual safety plug in the pipette. At the end of 60 minutes, the numerical results are read in millimeters directly from the imprinted scale on the pipette.

### **Ordering Information**

| Item# | Description                               | Unit |
|-------|---|------|
| 3450  | Sedigren ESR System, 100 tests per box    | 100  |
| 3452  | 10-place rack with pipette support clamps | Each |
| 3472  | 10-place polystyrene rack                 | Each |
| 3459  | Acrylic leveling platform                 | Each |
| 3476  | ESR transfer pipettes                     | 500  |

Sedigren™ is a trademark of Globe Scientific Inc.



## EZ-Rate™ E.S.R. Pipette



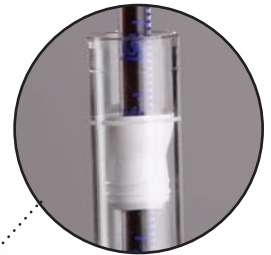
*The EZ-Rate™ Pipette eliminates blood transfer, splashing, spraying and aerosol hazards, making it an optimum choice for ESR testing in the laboratory.*

*It is specially designed for direct testing in 13mm blood collection tubes.*

- Westergren method
- No need to transfer blood
- No additional vials, tubes or transfer pipettes necessary
- Accurate and reproducible results
- Fibrous barrier protects user from hazardous aerosols



*Aerosol barrier plug*



*Determination performed directly from a 13mm blood collection tube – no need to transfer blood*

**EZ-Rate** offers a simple, safe, economical and highly-accurate method for performing Westergren ESR determinations directly in a 13mm sodium citrate blood collection tube.

The polystyrene EZ-Rate pipette is graduated from 0 to 180mm and features a unique fibrous plug located at the zero mark. The plug is specifically designed to be a self-sealing aerosol barrier that stops hazardous substances from escaping through the top of the pipette.

### **EZ-Rate directions for use:**

Simply insert the EZ-Rate pipette into the blood collection tube. Then, using continuous force, push the pipette down to the bottom of the tube. The blood will automatically rise into the pipette and stop at the zero mark. Place the test unit in the ESR rack (item #3452). At the end of 60 minutes the numerical results are read in millimeters directly from the imprinted scale on the pipette.

### **Ordering Information**

| Item# | Description                               | Unit |
|-------|---|------|
| 3479  | EZ-Rate pipettes                          | 100  |
| 3452  | 10-place rack with pipette support clamps | Each |
| 3459  | Acrylic leveling platform                 | Each |

## Kits, Racks, Supports & Accessories



### Sedi-Rate® Starter Kit

Everything you need to perform safe and accurate Westergren ESR determinations.

| Item # | Description  | Unit |
|--------|--|------|
| 3467   | 100 Sedi-Rate pipettes and vials, 10-place rack with pipette support clamps, leveling platform, 100 piercing funnels and 100 ESR transfer pipettes | Case |



### 10-Place Rack With Pipette Support Clamps

This unique rack features support clamps that hold the pipettes in a perfectly vertical position. When used in conjunction with our acrylic leveling platform (item #3459), you are assured of the most accurate results. For use with Sedi-Rate, Sedigren and EZ-Rate ESR products.

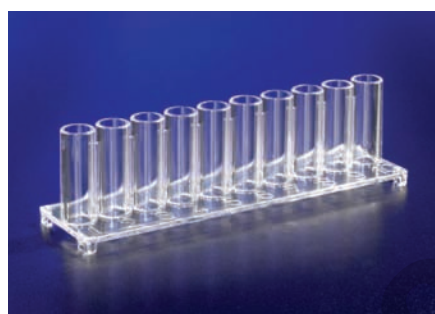
| Item # | Description                          | Unit |
|--------|--------------------------------------|------|
| 3452   | ESR rack with pipette support clamps | Each |



### Acrylic Leveling Platform

This durable platform has a leveling bubble and four adjustable feet. It is used in conjunction with our ESR racks to ensure a completely level testing surface.

| Item # | Description               | Unit |
|--------|---------------------------|------|
| 3459   | Acrylic leveling platform | Each |



### 10-Place Polystyrene Rack

This rack has been designed for use with Sedi-Rate™ and Sedigren™ ESR Systems.

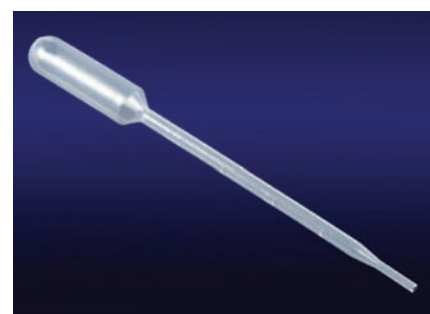
| Item # | Description           | Unit |
|--------|-----------------------|------|
| 3472   | ESR rack, polystyrene | Each |



### Piercing Funnels

For use with the Sedi-Rate™ ESR System.

| Item # | Description      | Unit |
|--------|------------------|------|
| 3475   | Piercing funnels | 200  |



### ESR Transfer Pipettes

For use with Sedi-Rate™ and Sedigren™ ESR Systems.

| Item # | Description           | Unit |
|--------|-----------------------|------|
| 3476   | ESR transfer pipettes | 500  |

Distributed by:

**globe**<sup>®</sup>  
SCIENTIFIC INC.

Customer service, sales and technical support:

Phone: 1 (800) 394-4562 • 1 (201) 599-1400

Fax: 1 (201) 599-1406 • E-mail: mail@globescientific.com