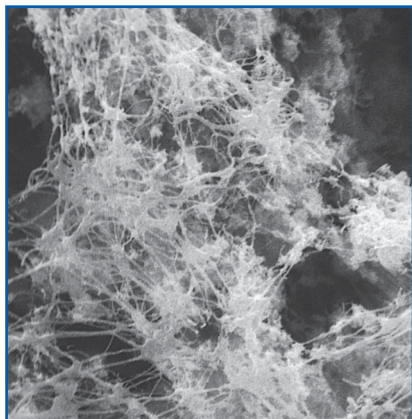


PTFE Membrane Disc Filters

Strong, chemically resistant membranes for solvent and HPLC mobile phase filtration



- ▶ Low chemical background permits highly sensitive, interference-free determinations.
- ▶ Ideal for filtration of gas and/or organic solvents.

Applications

- ▶ Ultimate in chemical compatibility for filtering harsh chemicals and HPLC mobile phases that destroy other membrane materials.

Specifications

Filter Media

Hydrophobic polytetrafluoroethylene (PTFE) on a polypropylene support

Pore Size

0.2, 0.45 μm , and 1 μm

Typical Thickness

0.2 μm : 139 μm (5.5 mils)

0.45 and 1 μm : 135 μm (5.3 mils)

Typical Air Flow Rate

L/min/cm² at 0.7 bar (70 kPa, 10 psi)

0.2 μm : 2

0.45 μm : 3

1 μm : 7

Maximum Operating Temperature

100 °C (212 °F)

Minimum Bubble Point - IPA

0.2 μm : 1.0 bar (100 kPa, 15 psi)

0.45 μm : 0.4 bar (40 kPa, 6 psi)

1 μm : 0.1 bar (10 kPa, 2 psi)

Ordering Information

TF (PTFE) Membrane Disc Filters

Part Number	Description	Pkg
66141	TF 200, 0.2 μm , 13 mm	100/pkg
66142	TF 200, 0.2 μm , 25 mm	100/pkg
66143	TF 200, 0.2 μm , 47 mm	100/pkg
66630	TF 200, 0.2 μm , 50 mm	100/pkg
66145	TF 200, 0.2 μm , 142 mm	25/pkg
66146	TF 200, 0.2 μm , 293 mm	25/pkg
66147	TF 450, 0.45 μm , 13 mm	100/pkg
66148	TF 450, 0.45 μm , 25 mm	100/pkg
66149	TF 450, 0.45 μm , 47 mm	100/pkg
66631	TF 450, 0.45 μm , 50 mm	100/pkg
66151	TF 450, 0.45 μm , 142 mm	25/pkg
66152	TF 450, 0.45 μm , 293 mm	25/pkg
66153	TF 1000, 1 μm , 13 mm	100/pkg
66154	TF 1000, 1 μm , 25 mm	100/pkg
66159	TF 1000, 1 μm , 37 mm, with support pads	100/pkg
66155	TF 1000, 1 μm , 47 mm	100/pkg
66158	TF 1000, 1 μm , 293 mm	25/pkg

Related Products

47 mm Filter Funnels, Glass	206
SolVac® Filter Holder	183
Stainless Steel Forceps	230, 280
Vacuum/Pressure Pumps	279