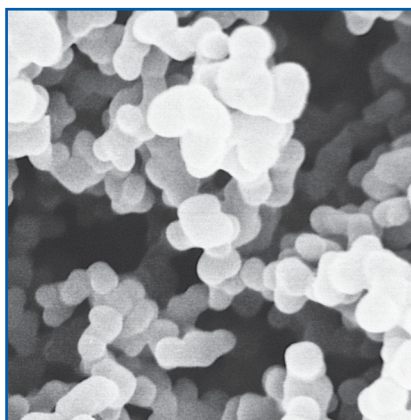


Supor® PES Membrane Disc Filters

High flow rate membrane optimized for biological, pharmaceutical, and sterilizing filtration requirements



- ▶ Fast filtration with superior flow rates and high throughputs.
- ▶ Low protein binding and extensive drug compatibility for critical applications.
- ▶ Saves time and money with fewer filter changes per sample volume.
- ▶ 142 and 293 mm discs feature printed tab for instant recognition of pore size and lot number.
- ▶ May be sterilized by gamma irradiation, EtO, or autoclaving.

Applications

- ▶ Suited for biological, pharmaceutical, and sterilizing filtration requirements.
- ▶ Available for microbiological analysis in individual gamma-irradiated packaging.

Specifications

Filter Media

Hydrophilic polyethersulfone (PES)

Pore Size

0.1, 0.2, 0.45, and 0.8 μm

Diameter

13 - 293 mm

Typical Thickness

0.1 μm : 132 μm (5.2 mils)

0.2 μm : 145 μm (5.7 mils)

0.45 and 0.8 μm : 140 μm (5.5 mils)

Typical Water Flow Rate

mL/min/cm² at 0.7 bar (70 kPa, 10 psi)

0.1 μm : 5

0.2 μm : 26

0.45 μm : 58

0.8 μm : 165

Maximum Operating Temperature - Water

100 °C (212 °F)

Extractables - Soxhlet Extraction

< 4%

Minimum Bubble Point - Water

0.2 μm : 3.5 bar (350 kPa, 51 psi)

0.45 μm : 2.5 bar (250 kPa, 36 psi)

0.8 μm : 1.0 bar (100 kPa, 15 psi)

60% IPA/40% H₂O (v:v)

0.1 μm : 2.4 bar (240 kPa, 35 psi)

Biological Safety

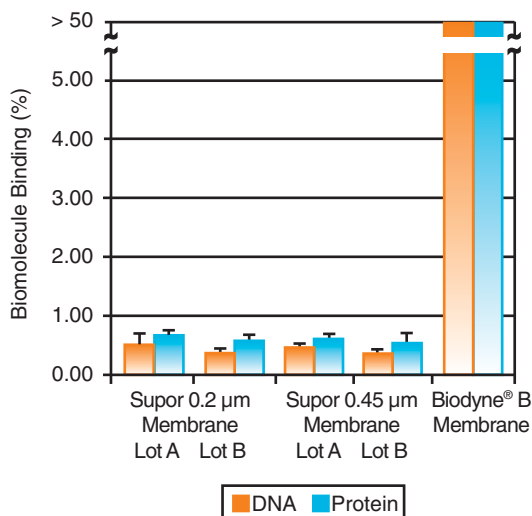
Passes United States Pharmacopeia (USP) Biological Reactivity Test, *In Vivo* <88>

Sterilization

Provided non-sterile. Can be sterilized by autoclaving at 121 - 123 °C (250 - 253 °F) for 30 min. PN 63025, 60043, 65472, 5010, and 66234 are provided gamma-irradiated.

Performance

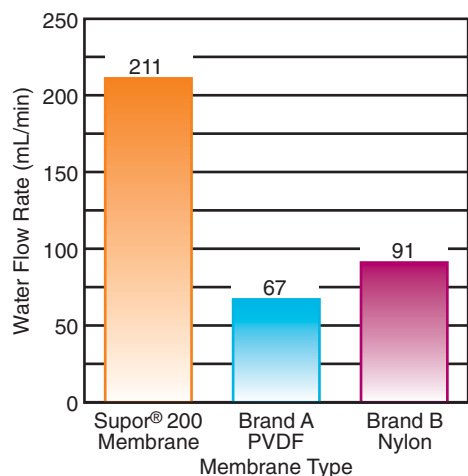
Supor Membrane is Low in Biomolecule Binding



¹²⁵I-labeled BSA (1.6 μg) or ³²P-labeled DNA (500 ng) was diluted to 5 mL in PBS (BSA) or Tris-EDTA (DNA) and filtered through a 13 mm disc of the indicated membrane. Filtration was carried out using a 10 mL syringe at a flow rate of 1.0 mL/minute. Binding was determined by comparing the amount of radioactivity remaining in the membrane (triplicate) to the activity of the starting material by counting the disc or solution in a scintillation counter. Biodyne B membrane is designed for biomolecule binding and was used as a positive control.

Performance (continued)

Membrane Water Flow Rate



P = 0.7 bar (70 kPa, 10 psi), EFA = 9.62 cm²

Supor polyethersulfone membrane flow rate outperforms nylon and PVDF membranes of the same pore size (0.2 μm).

Ordering Information

Supor 100 Membrane Disc Filters, 0.1 μm

Part Number	Description	Pkg
60309	25 mm, plain	100/pkg
60310	47 mm, plain	100/pkg
60311	90 mm, plain	100/pkg
60312	142 mm, tabbed	25/pkg
66551	142 mm, no tab	25/pkg
60313	293 mm, tabbed	25/pkg
66552	293 mm, no tab	25/pkg

Supor 200 Membrane Disc Filters, 0.2 μm

Part Number	Description	Pkg
60298	13 mm, plain	100/pkg
60300	25 mm, plain	100/pkg
60301	47 mm, plain	100/pkg
66234	47 mm, grid, individual gamma-irradiated pack (S-pack)	200/pkg
60334	90 mm, plain	100/pkg
66549	142 mm, no tab	25/pkg
60305	142 mm, tabbed	25/pkg
60307	293 mm, tabbed	25/pkg
66550	293 mm, no tab	25/pkg

Supor 450 Membrane Disc Filters, 0.45 μm

Part Number	Description	Pkg
60170	13 mm, plain	100/pkg
60172	25 mm, plain	100/pkg
60173	47 mm, plain	100/pkg
61854	47 mm, grid	100/pkg
60043	47 mm, grid, individual-gamma irradiated pack (S-pack)	200/pkg
60174	50 mm, plain	100/pkg
60206	90 mm, plain	100/pkg
60177	142 mm, tabbed	25/pkg
66553	142 mm, no tab	25/pkg
60179	293 mm, tabbed	25/pkg
66554	293 mm, no tab	25/pkg

Supor 800 Membrane Disc Filters, 0.8 μm

Part Number	Description	Pkg
60109	25 mm, plain	100/pkg
65472	47 mm, grid, individual gamma-irradiated pack (S-pack)	200/pkg
60110	47 mm, plain	100/pkg
60112	90 mm, plain	100/pkg
60114	142 mm, tabbed	25/pkg
66555	142 mm, no tab	25/pkg
60116	293 mm, tabbed	25/pkg
66556	293 mm, no tab	25/pkg

Related Products

Hardware..... 257