

AcroPrep™ Advance 96-Well Filter Plates for Ultrafiltration

Provides rapid, efficient separation of biomolecules



- ▶ Omega™ membrane provides high recovery and typically results in $\geq 90\%$ recovery of target biomolecules.
- ▶ New well design results in faster, more uniform filtration rates across the plate with reduced hold-up volume for maximum sample recovery.
- ▶ Intrinsic plate and membrane properties prevent target molecules from binding to the plate.

Applications

- ▶ Size exclusion.
- ▶ PCR clean-up.
- ▶ Nucleic acid purification.
- ▶ Protein separation.

Specifications

Materials of Construction

Filter Media: Omega (modified polyethersulfone) membrane
 Plate Housing: Polypropylene
 Lid: Polystyrene

Dimensions

Length: 12.8 cm (5.0 in.)
 Width: 8.6 cm (3.4 in.)
 Height With Lid: 1.8 cm (0.7 in.) (350 μ L only)
 Height Without Lid: 350 μ L, 1.4 cm (0.6 in.); 1 mL: 3.3 cm (1.3 in.)

Well-Bottom Area

0.25 cm²

Recommended Working Volume

350 μ L: $\leq 300 \mu$ L
 1 mL: $\leq 900 \mu$ L

Recommended Operating Vacuum

≥ 25.4 cm Hg (10 in. Hg)

Recommended Centrifugal Force

1,500 x g

Typical Vacuum Filtration Performance

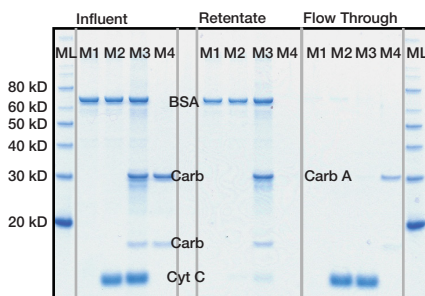
Membrane	Processing Time (min)	Hold-Up Volume (μ L)
10K Omega	20	5
30K Omega	8	6
100K Omega	4	7

Typical Centrifugal Filtration Performance

Membrane	Processing Time (min)	Hold-Up Volume (μ L)
3K Omega	45	2
10K Omega	8	2
30K Omega	8	2
100K Omega	5	2

Performance

Separation of Proteins With Omega Membrane Using Vacuum Filtration



SDS-PAGE analysis of reduced samples from 30K Omega membrane plate using vacuum separation method, 5 μ L/lane. 75 μ L protein mix/well subjected to ~ 20 in. Hg vacuum for ~ 8 minutes. Each protein at 100 μ g/mL in initial mix. ML = Marker Ladder; M1 = BSA; M2 = BSA + Cyt C; M3 = BSA, Carbonic Anhydrase, and Cyt C; M4 = Carbonic Anhydrase. GelCode[®] Blue stain used.

Ordering Information

AcroPrep Advance 96-Well Filter Plates for Ultrafiltration

Part Number	Description	Pkg
8033	350 μ L, Omega 3K MWCO	10/pkg
8034	350 μ L, Omega 10K MWCO	10/pkg
8035	350 μ L, Omega 30K MWCO	10/pkg
8036	350 μ L, Omega 100K MWCO	10/pkg
8163	1 mL, Omega 3K MWCO	5/pkg
8164	1 mL, Omega 10K MWCO	5/pkg
8165	1 mL, Omega 30K MWCO	5/pkg
8166	1 mL, Omega 100K MWCO	5/pkg

Accessories and Replacement Parts

Part Number	Description	Pkg
5017	Multi-well plate vacuum manifold	1/pkg
5225	Adapter collar for centrifugation	2/pkg
5226	Adapter for PCR receiver plate	2/pkg
5230	Cap mat for incubation	5/pkg
8001	AcroPrep Advance multi-well plate lids	10/pkg