



**Cellulose Acetate  
Clinical  
electrophoresis**  
for Qualitative  
Identification and  
Quantification of  
Haemoglobin,  
Lipoprotein, Serum  
proteins and  
Immunofixation  
analysis (IFE)



- COMPACT HIGH RESOLUTION SYSTEM FOR CLINICAL ELECTROPHORESIS
- ACCOMMODATES STRIPS AND GELS UP TO 24x20CM
- COMPLETE RANGE OF CELLULOSE ACETATE GELS AND KITS
- DENSITOMETER SOFTWARE AND SCANNER AVAILABLE



- Qualitative identification and quantification of Hb, Lipoprotein, serum protein and monoclonal antibodies
- Ready kits available that include reagents and accessories required to perform complete tests
- CellasGEL and cellulose acetate dry plates available in different sizes and/or thickness
- Accommodates strips and gels up to 24x20cm
- Dedicated analysis software and scanner

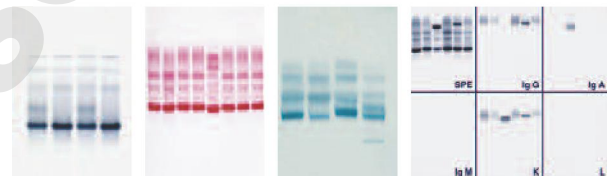
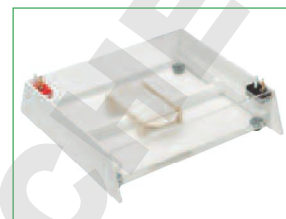
Cellulose acetate electrophoresis is an important technique in clinical diagnostics. The Cleaver Scientific range of cellulose acetate products offers a complete system solution for research and clinical cellulose acetate electrophoresis applications

#### APPLICATIONS INCLUDES:

Detection of haemoglobinopathies such as Sickle cell, Thalassemia; Dysproteinaemia; Hyperlipidaemias, High-density (HDL), Low-density (LDL) and Very-low-density (VLDL) lipoprotein evaluation; Monoclonal Gammopathies etc

For further information and full products' range please visit our website at [www.cleaverscientific.com](http://www.cleaverscientific.com)

## CELLAS



Haemoglobins

Serum proteins

Lipoproteins

IFE

The Cellas electrophoresis unit is the ideal system for standard 'dry' membrane and 'wet' cellulose acetate gels (CellasGEL)

#### ORDERING INFORMATION, CELLASGEL APPLICATIONS PACKAGES EQUIPPED WITH BRIDGES, APPLICATOR AND CLINICAL TEST KIT

Code	Description	Packages (Kit and Accessories) required, Code	Diagnostic Application
CSLKITCU	<b>CellasKIT: serum and concentrated urine IFE</b> Kit content, sufficient for 5 patients (10x semi-micro tests): 30 CellasGEL strips & TGS buffer; Coomassie stain, clearing & saline solutions; volumetric distributors & antisera (anti-IgG, IgA, IgM, Ig & Ig); blotting paper & mylar film. Excludes: Destain.	CSLKITCU-ABS Includes: 1x CSLKITCU, 1x CSLAPPS22, 3x CSLBDG8.5S	MGUS, MM
CSLKITI2432	<b>CellasKIT: serum IFE</b> Kit content, sufficient for 24 patients (semi-micro) & 32 (micro): 24 CellasGEL strips & Tris-Hippurate buffer; Amidoblack stain, saline & clearing solutions; volumetric distributors & antisera (anti-IgG, IgA, IgM, Ig & Ig); blotting paper & mylar film. Excludes: Destain	CSLKITI2432-ABS Includes: 1x CSLKITI2432, 1x CSLAPPS6, 6x BCSLDG8.5S CSLKITI2432-ABM Includes: 1x CSLKITI2432, 1x CSLAPP8M, 6x CSLBDG8.5S	MGUS, MM
CSLKITSP100200	<b>CellasKIT: serum proteins</b> Kit content, sufficient for 100x semi-micro or 200x micro tests: 25 CellasGEL strips & Tris-Hippurate buffer; Ponceau S stain, destain & clearing solutions; blotting paper & mylar film	CSLKITSP-ABS Includes: 1x CSLKITSP100200 1x CSLAPPS4, 3x CSLBDG8.5S CSLKITSP-ABM Includes: 1x CSLKITSP100200 1x CSLAPP8M, 3x CSLBDG8.5S	Dysproteinaemia; Albumin, Alpha-1, Alpha-2, Transferrin, C3 & Gamma Globulin Quantitation
CSLKITSP150200	<b>CellasKIT: serum proteins (high resolution)</b> Kit content, sufficient for 150x semi-micro or 200x micro tests: 25 CellasGEL strips & TGS buffer; Coomassie stain, citric acid & clearing solutions; blotting paper & mylar film. Excludes: Destain	CSLKITSPHR-ABS Includes: 1x CSLKITSP150200 1x CSLAPPS4, 3x CSLBDG8.5S CSLKITSPHR-ABM Includes: 1x CSLKITSP150200 1x CSLAPP8M, 3x CSLBDG8.5S	Incipient Gammopathies
CSLKITHG100	<b>CellasKIT: haemoglobin</b> Kit content, sufficient for 100x semi-micro tests: 25 CellasGEL strips & Tris-Glycine buffer; Ponceau S stain, destain & clearing solutions; blotting paper & mylar film.	CSLKITHG100-ABS Includes: 1x CSLKITHG100, 1x CSLAPPS4 3x CSLBDG8.5S	Haemo- globinopathies
CSLKITLP100	<b>CellasKIT: lipoproteins</b> Kit content, sufficient for 100x semi-micro tests: 25 CellasGEL strips & Tris-Hippurate buffer; Sudan Black stain & clearing solution; blotting paper & mylar film	CSLKITLP100-ABS Includes: 1x CSLKITLP100 1x CSLAPPS4 3x CSLBDG8.5S	Hyper-lipidaemias

#### CLEAVER SCIENTIFIC LTD

Unit 41, Somers Road Industrial Estate,  
Rugby, CV22 7DH  
United Kingdom

T\_ +44 (0)1788 565300  
E\_ INFO@CLEAVERSCIENTIFIC.COM  
W\_ WWW.CLEAVERSCIENTIFIC.COM