

IKA® Rocker 3D digital



IKA® Rocker 3D basic



| | | |
|---------------------------|----|----|
| Indicaciones de seguridad | ES | 35 |
| Veiligheidsinstructies | NL | 35 |
| Norme di sicurezza | IT | 36 |
| Säkerhetsanvisningar | SV | 37 |
| Sikkerhedshenvisninger | DA | 38 |
| Sikkerhedsanvisninger | NO | 38 |
| Turvallisuusohjeet | FI | 39 |
| Normas de segurança | PT | 40 |
| Υποδείξεις ασφαλείας | EL | 41 |

| | | |
|----------------------------|----|----|
| Betriebsanleitung | DE | 3 |
| Operating instructions | EN | 11 |
| Mode d'emploi | FR | 19 |
| Инструкция по эксплуатации | RU | 27 |

| | | |
|---------------------------|----|----|
| Wskazówki bezpieczeństwa | PL | 41 |
| Bezpečnostní upozornění | CS | 42 |
| Biztonsági utasítások | HU | 43 |
| Varnostna navodila | SL | 44 |
| Bezpečnostné pokyny | SK | 44 |
| Ohutusjuhised | ET | 45 |
| Drošības Norādes | LV | 46 |
| Saugos Reikalavimai | LT | 47 |
| Инструкции за безопасност | BG | 47 |
| Indicații de siguranță | RO | 48 |



Contents

Page

| | |
|--------------------------------|----|
| Declaration of conformity | 11 |
| Explication of warning symbols | 11 |
| Warranty | 11 |
| Safety instructions | 12 |
| Unpacking | 12 |
| Correct use | 13 |
| Commissioning | 13 |
| Accessories | 16 |
| Maintenance and cleaning | 16 |
| Error codes | 17 |
| Technical data | 18 |

Declaration of conformity

We declare under our sole responsibility that this product corresponds to the regulations 2006/42/EC, 2011/65/EU, 2014/30/EU and 2014/35/EU and conforms with the standards or standardized documents EN 61010-1, EN 61010-2-051, EN 60529, EN 61326-1 and EN ISO 12100.

Explication of warning symbols



General hazard



Crush hazard!

Warranty

In accordance with **IKA**[®] warranty conditions, the warranty period is 24 months. For claims under the warranty please contact your local dealer. You may also send the machine direct to our factory, enclosing the delivery invoice and giving reasons for the claim. You will be liable for freight costs.

The warranty does not cover worn out parts, nor does it apply to faults resulting from improper use, insufficient care or maintenance not carried out in accordance with the instructions in this operating manual.

Safety instructions

For your protection



Read the operating instructions in full before starting up and follow the safety instructions.

- Keep the operating instructions in a place where they can be accessed by everyone.
- Ensure that only trained staff work with the appliance.
- Follow the safety instructions, guidelines, occupational health and safety and accident prevention regulations.
- Wear your personal protective equipment in accordance with the hazard category of the medium to be processed. Otherwise there is a risk of:
 - splashing liquids
 - projectile parts
 - body parts, hair, clothing and jewellery getting caught.
- Set up the device in a spacious area on an even, stable, clean, non-slip, dry and fireproof surface.
- The feet of the appliance must be clean and undamaged.
- Check the appliance and accessories beforehand for damage each time you use them. Do not use damaged components.



Caution! There is a crush hazard between the moving shaking table and the casing.

- Place the vessels securely on the shaking table or on the chosen mat or rack.
- Firmly secure the accessories and vessels in place, otherwise shaking vessels could be damaged or projected out.
- Position one single shaking vessel in the centre and several shaking vessels so that they are evenly spread out.
- Always load the samples evenly on the device.
- The weight of the load must not exceed 2 kg. Do not exceed the maximum permissible shaking weights.
- Do not move or transport the device when it is operating or connected to the power supply.
- Reduce the speed if
 - the medium splashes out of the vessel because the speed is too high
 - the appliance is not running smoothly
 - dynamic forces start to cause the device and/or the vessels placed on it to move around.

- The appliance is not suitable for manual operation.
- Beware of the risk of
 - flammable materials
 - glass breakage as a result of mechanical shaking power
- The appliance may heat up when in use.
- Only process media that will not react dangerously to the extra energy produced through processing. This also applies to any extra energy produced in other ways, e.g. through light irradiation.
- Process pathogenic materials only in closed vessels under a suitable extractor hood. Please contact **IKA®** if you have any questions.
- Do **not** operate the appliance in explosive atmospheres, with hazardous substances or under water.
- Safe operation is only guaranteed with the accessories described in the "Accessories" chapter.
- Always disconnect the plug before fitting accessories.
- Disconnect the device from the power supply before you open the cover or adjust the inclination angle of the device shaking table.
- Do not operate the device with the cover open.
- The appliance can only be disconnected from the mains supply by pulling out the mains plug or the connector plug.
- The socket for the mains cord must be easily accessible.
- The **IKA® Rocker 3D basic** does not restart automatically when power is restored after a power outage. If the **IKA® Rocker 3D digital** is running in mode A it does not restart automatically when power is restored after a power outage.

For protection of the equipment

- The appliance may only be operated by experts.
- The voltage stated on the type plate must correspond to the mains voltage.
- Removable parts must be refitted to the appliance to prevent the infiltration of foreign objects, liquids etc..
- Protect the appliance and accessories from bumps and impacts.
- The device must only be operated with the original plug-in power supply unit.

Unpacking

• Unpacking

- Please unpack the device carefully.
- In the case of any damage a detailed report must be sent immediately (post, rail or forwarder).

• Delivery scope

IKA® Rocker 3D basic/ digital

- **IKA® Rocker 3D basic/digital**, depending on the type that was ordered
- Mat
- 4 AF hexagon L-wrench to DIN 911 (only digital)
- AC adapter, see Fig. 1
- Operating instructions
- Warranty card



Fig. 1

Correct use

• Use

For mixing and agitating liquids.

IKA® Rocker 3D basic

- Continuous operation for individual or multiple vessels.

IKA® Rocker 3D digital

- Continuous operation for individual or multiple vessels.

- Timer operation for individual or multiple vessels.

• Range of use

- Laboratories
- Pharmacies
- Schools
- Universities

The unit is suitable for use in all areas apart from domestic areas and areas directly connected to a low-voltage supply which also serves domestic areas.

The safety of the user cannot be guaranteed if the appliance is operated with accessories that are not supplied or recommended by the manufacturer or if the appliance is operated improperly contrary to the manufacturer's specifications or if the appliance or the printed circuit board are modified by third parties.

Commissioning

- Check that the power supply matches the data on the rating plate.
- Plug the AC adapter into a standard mains socket in order to supply the device with power. See the section "Technical data" for the connection values.
- Also pay attention to the ambient conditions listed in the "Technical data".

- The **IKA® Rocker 3D basic** does not restart automatically when power is restored after a power outage. If the **IKA® Rocker 3D digital** is running in mode A it does not restart automatically when power is restored after a power outage.



If these conditions are met the unit is ready for service when the mains plug has been plugged in.

IKA® Rocker 3D basic

The AC adapter is suitable for 100 V upto 240 V. Insert an appropriate adapter corresponding to the country, before plugging the AC adapter into the mains socket.



Switching the device on

Press the "Power" button **(L)** to switch the device on.

→ The LED **(M)** lights up green.



Starting the device

Press the "Start/Stop" button **(F)** to start the shaking process.

The device starts at the preset speed of 30 rpm.



Stopping the device

Press the "Start/Stop" button **(F)** to stop the shaking process.



Switching off the device

Press the "Power" button **(L)** to switch the device off.

→ The LED **(M)** goes out.



IKA® Rocker 3D digital

The AC adapter is suitable for 100 V upto 240 V. Insert an appropriate adapter corresponding to the country, before plugging the AC adapter into the mains socket.



Switching the device on

Press the "Power" button **(L)** to switch the device on.



The following data appear on the display in the sequence listed:

- the test image
- the software version
- the operating mode
- the values and settings last used



Speed setting

Use the "Speed setting" button **(K)** to set the speed to a value between 5 and 80 rpm in units of 1 rpm.



Timer/Counter

Select "Counter" or "Timer" **(I)**.



Timer

When "Timer" is selected, the set value counts down. Once the timed shaking cycle has been completed the device switches off automatically.

→ An acoustic signal beeps three times and the "Timer" LED **(H)** flashes red.

Counter

The counter measures the time from the start of shaking to the end.

→ The "Counter" LED **(G)** flashes red.

If the "Start/Stop" button **(F)** is pressed the shaking process stops and the elapsed time is displayed. If the counter is restarted the measurement restarts afresh.

To switch from counter to timer or vice versa, press the "Timer" button **(I)**.

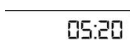
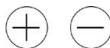


Setting

Set the timer from 1 sec to 99 h 59 min using the "Plus/Minus" timer setting buttons **(J)**.

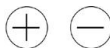
Press the "Start/Stop" button **(F)** to start the shaker.

The last timer value setting is saved and is loaded for the next shaking process.



Resetting to 0

To reset the timer, press the "Timer Minus" and "Timer Plus" buttons **(J)** simultaneously.



Starting the device

Press the "Start/Stop" button **(F)** to start the shaking process.

The device starts with the desired settings.



Stopping the device

Press the "Start/Stop" button **(F)** to pause operation.



Switching off the device

Press the "Power" button **(L)** to switch the device off.



Operating modes A and B

Operating mode A

The device does not restart automatically when power is restored after a power outage.

Operating mode B

The device restarts automatically when power is restored after a power outage, using the set values, and displays the (Pr) symbol to indicate that there has been a power outage within a certain period of time.

Switching between operating modes

To switch between operating modes, switch the device off, then keep the "Start/Stop" button (F) depressed and press the "Power" button (L).

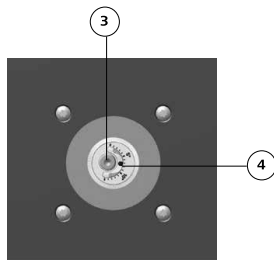
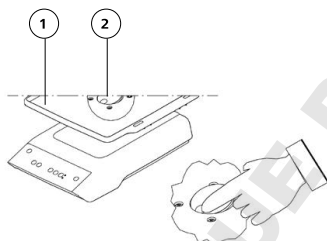
Adjusting the inclination angle of the shaking table

The inclination angle of the shaking table can be adjusted steplessly from 0 - 15°.

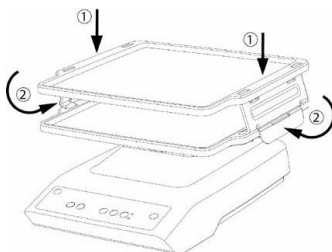
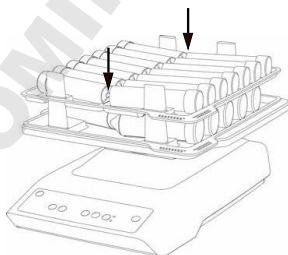


Caution! Do not remove the mat (1) and the cover (2) whilst the device is in operation!
Stop the device by pressing the "Start/Stop" button (F). Do not use your hand to stop the device.
Press the "Power" button (L) to switch the device off.

- To adjust the inclination angle of the shaking table, first remove the mat (1), then the cover (2) that lies beneath it. To do this, press the recess.
- Slacken the screw (3), using the 4 AF hexagon L-wrench to DIN 911 supplied; prevent the rotary knob from turning.
- Caution!** Do not fully undo the screw! Slackening the screw half a turn is quite sufficient to allow adjustment of the inclination angle of the shaking table.
- Turn the rotary knob to adjust the inclination angle of the shaking table to the desired angle (4).
- Tighten the screw (3) finger tight.
- Refit the cover (2).



Use of accessories



Spare parts order

When ordering spare parts, please give:

- Machine type
- Manufacturing number, see type plate
- Item and designation of the spare part, see www.ika.com, spare parts diagram and spare parts list

Repair

Please only send devices in for repair that have been cleaned and are free of materials which might present health hazards.

For this, use the "certificate of compliance" form which you can obtain from **IKA**® or can download a version for printing from the **IKA**® website at www.ika.com.

If your appliance requires repair, return it in its original packaging. Storage packaging is not sufficient when sending the device - also use appropriate transport packaging.

Error codes

IKA® Rocker 3D basic

In case of a fault, a beep is heard and the "Power" LED flashes.

Proceed as follows in such cases:

- ☞ Switch the device off.
- ☞ Perform corrective measures as described below.
- ☞ Perform a restart.

| Error | Cause | Effect | Solution |
|-------|----------------------------|-----------|---|
| | Motor blockage or overload | Motor off | - Switch the device off. - Reduce the load on the motor and check all moving parts for freedom of movement. - Then perform a restart. |

If the actions described fail to resolve the fault or another error code is displayed then take one of the following steps:

- Contact the **IKA**® service department,
- Send the device for repair, including a short description of the fault.

IKA® Rocker 3D digital

The fault is shown by an error code in the display as following if the error occurs, e.g. Er 4.

Proceed as follows in such cases:

- ☞ Switch the device off.
- ☞ Perform corrective measures as described below.
- ☞ Perform a restart.

| Error | Cause | Effect | Solution |
|-------------|---------------------------------------|-----------|---|
| Er 3 | Temperature inside device is too high | Motor off | - Switch the device off. - Allow the device to cool down. |
| Er 4 | Motor blockage or overload | Motor off | - Switch the device off. - Reduce the load on the motor and check all moving parts for freedom of movement. - Then perform a restart. |

If the actions described fail to resolve the fault or another error code is displayed then take one of the following steps:

- Contact the **IKA**® service department,
- Send the device for repair, including a short description of the fault.

Technical data

Power supply

| | | |
|------------------|-----|--|
| Input | V | 100 - 240 |
| | A | 0,8 |
| Output | Hz | 50-60 |
| | Vdc | 24 |
| Protection class | | 24W,LPS (Limited power source) |
| | | 2 (double insulated) <input checked="" type="checkbox"/> |

Shaker

| | | IKA® Rocker 3D basic | IKA® Rocker 3D digital |
|---|--------------|----------------------|--------------------------------|
| DC | V | | 24 |
| Max. device power consumption | W | | 24 |
| Motor power consumption | W | | 16 |
| Motor output power | W | | 9 |
| Type of movement | | | tumbling |
| Permissible shaken weight (incl. fixture) | kg | | 2 |
| Inclination angle of the shaking table | ° | - | 0 - 15 |
| Adjustment inclination angle of the shaking table | ° | - | stepless |
| Fixed inclination angle | ° | 8 | |
| Speed min. | rpm | - | 5 |
| Speed preset definitely | rpm | 30 | - |
| Speed max. | rpm | - | 80 |
| Speed variation | % | 10 | 5 |
| Adjustment speed | | - | 1 rpm steps |
| Speed display | | - | 7-segment LED |
| Timer | | - | yes |
| Timer display | | - | 7 Segment LED |
| Operating mode | | continuous operation | timer and continuous operation |
| Adjustment timer min. | sec | - | 1 |
| Adjustment timer max. | h:min | - | 99 h 59 min |
| Dimensions (WxDxH) | mm | 280x165x330 | 280x185x330 |
| Weight | kg | 2.2 | 2.3 |
| Perm. duration of operation | % | | 100 |
| Perm. ambient temperature | °C | | + 4 bis + 50 |
| Perm. rel. humidity | % | | 80 |
| Protection acc. DIN EN 60529 | | | IP 21 |
| Overvoltage category | | | II |
| Protection class | | | II |
| Contamination level | | | 2 |
| Shaking table size (WxD) | mm | | 235 x 235 |
| Operation at a terrestrial altitude | m | | max. 2000 above sea level |

Subject to technical changes!