




Thermo Scientific Herasafe and Maxisafe 2030i Biological Safety Cabinet

Setting new standards in biological safety cabinets



Smarter protection

that never takes a day off

Thermo Scientific™ Herasafe™ and Maxisafe™ 2030i Biological Safety Cabinets leverage a legacy of global leadership in biological safety cabinet (BSC) design with breakthrough innovations to optimize contamination prevention, user convenience and information management, offering our most technologically advanced Class II cabinets available.

Equipped with smart self monitoring safety features, intuitive graphic touchscreen interface and built in connectivity to preserve important performance data, the Herasafe and Maxisafe 2030i BSC is designed to deliver performance with superior precision for demanding cell culture applications and other sensitive work requiring assured safety for product, personnel and environment, especially for bio pharma and advanced research initiatives.

Thermo Scientific biological safety cabinets are designed to maximize sample protection and user safety, with an emphasis on containment, comfort and convenience, all day, every day. For more than five decades we have been a pioneer and innovator of clean air technologies. Our global vision and experience have enabled us to continually provide the best application based solutions ideally suited for your requirements and working environment, with compliance to all major worldwide safety standards.



Precise self adjusting protection

Autonomous safety features maintain proper air flow and monitor critical conditions in real time without user interaction. This supports valuable research enabling our customers to focus where needed.



Ergonomics

Readily understandable graphical display provides the information you need, while the electronic sash with fully hinged opening enables easy access for supplies and equipment, and simplifies easy cleaning and disinfection.



Management

Built-in connectivity readiness for remote monitoring capabilities and performance data collection. Designed to evaluate your processes and accelerate operations and your discoveries from anywhere.

Smart technology offers optimal containment and energy efficiency

Autonomous safety features help ensure continuous accuracy that never takes a day off – providing optimal protection from contamination by compensating to match the way you work and your lab environment.



Sash Opening 200/250mm | SmartFlow™ Plus and DAVE™ Plus
Password Protection | Auto Compensating UV | Efficient Design



Electronic front sash

With push button simplicity the front window automatically opens to the correct aperture mandated by regional regulation to help ensure proper working conditions. The sloped front window allows a fatigue-free working position and has an aerosol-tight seal when closed.

200mm sash opening (standard)

Provides optimum balance of comfort plus efficiency.

250mm sash opening (optional)

Provides additional convenience for quick and safe movement of consumables.

Simplified operation and ergonomics



Readily understandable graphical display provides the information you need, while the electronic sash with fully hinged opening enables easy access for supplies and equipment, and effortless cleaning and disinfection.

Helping ensure that the BSC is managing safety conditions autonomously, and is simple and intuitive to use allows our customers to fully focus on demanding applications and precision science.

Intuitive | Simple | Convenient

Real time display and biological safety cabinet naming capability

Company common menu bar

Globally recognizable icons

Animated airflow

Company common "Health Status" icon

Additional velocity information

Frequent programs

Programmable functions:
Edit auto start

Push button operations



Smart Clean Plus

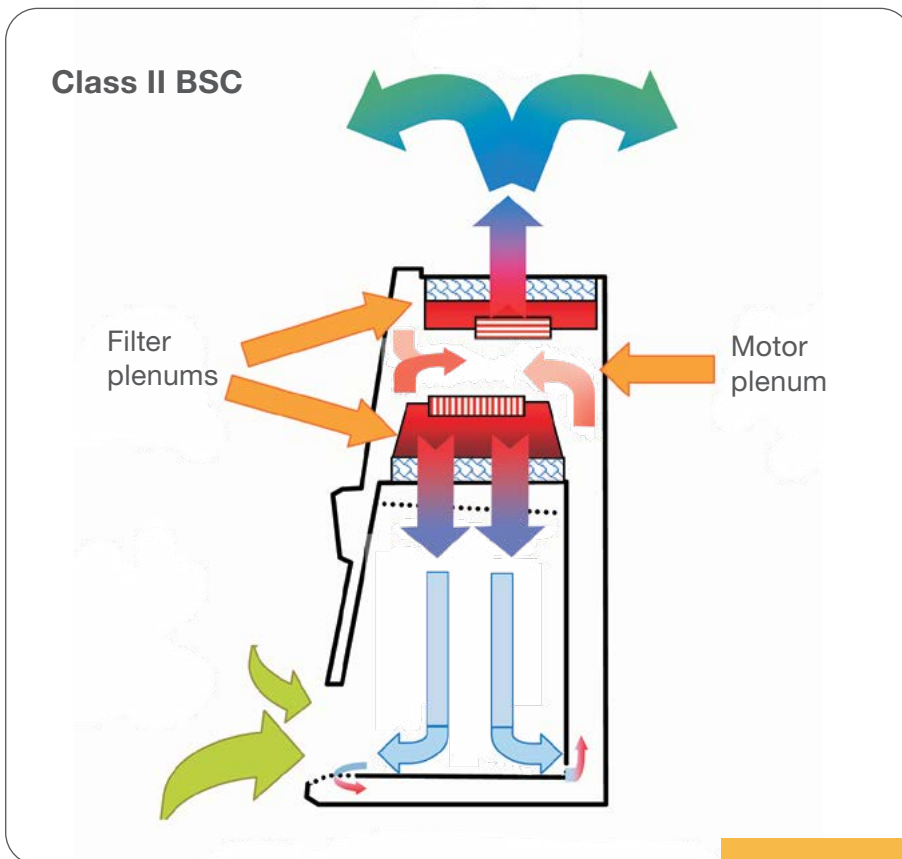
Fully opening front-hinged window design enables easy cleaning and disinfection with full access to the interior cabinet space.

Full opening also allows access to the biological safety cabinet for thorough cleaning and visible reach to all cabinet surfaces including rear wall.



316L Stainless steel interior (standard)

Most resistant to scratches and chemical attack in the user zone. All surfaces inside the Herasafe 2030i BSC are manufactured using 316L stainless steel. The finish is "brushed and sanded" which both reduces glare and offers better scratch resistance.



SmartFlow Plus

Proprietary design automatically compensates unique energy saving dual DC blower motors to help ensure the proper airflow rates no matter the loading condition of the protective HEPA filters. Unlike typical BSCs which rarely perform at the same levels day after day due to HEPA loading, and potential disruptions to airflow such as paper covering vent openings.

How does this work?

Independent intelligent DC motors for downflow and inflow monitor and control fan speed in real time to maintain balanced airflow during filter loading or temporary obstruction.

Exclusive to our BSCs, independent supply and exhaust blowers automatically balance both the downflow and inflow velocities to maintain both operator and sample protection.

DAVe Plus

Our unique digital airflow verification system validates protection by monitoring airflow velocities with independent pressure sensors which detect and alert to any changes across the exhaust and downflow plenums.

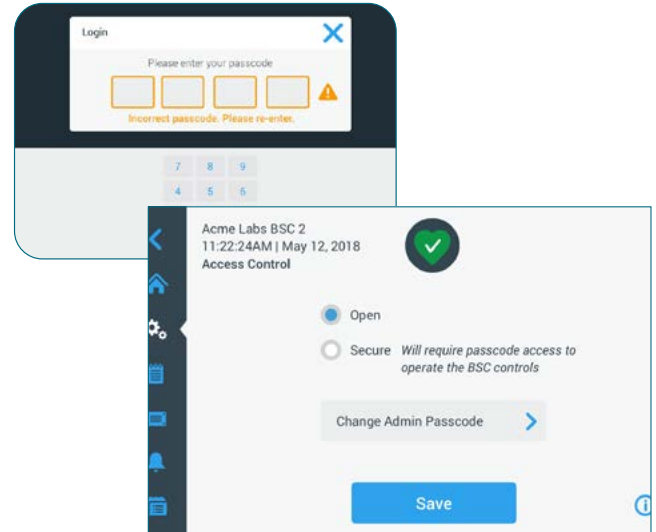
How does this work?

By sensing pressure in the exit of the blowers, DAVe Plus monitors airflow directly for the inflow and downflow in the Herasafe 2030i BSC to help ensure both personal and sample protection.



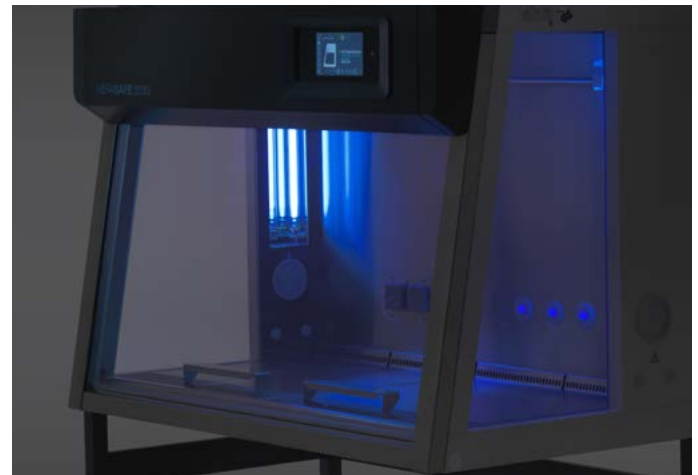
Controlled Passcode Access

For convenience, the BSC's can be configured via the user interface to operate in "open mode" or "secure mode" depending upon working preferences and lab environment. In secure mode, a selectable passcode must be entered to enable operation of the BSC's. In this way, different units utilized by different personnel for specific applications, may be controlled by providing a unique passcode to each, or the same code to all.



Self-adjusting germicidal UV light intensity

For those who routinely employ UV germicidal light to their work surface at the end of the work day, we provide a time adjustable functionality to auto shut off the light at the desired interval to preserve bulb life. Our exclusive self-adjusting exposure capability enables reproducible germicidal effectiveness with every use, by helping to ensure performance at consistent levels to protect your important work.



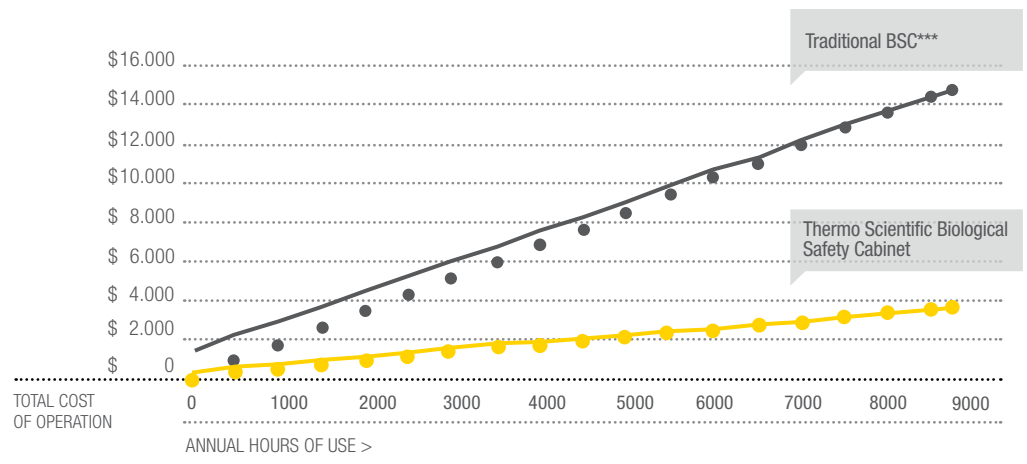
Energy efficient design

- Energy conserving dual DC motor design, generates less heat than older AC designs with double the usage lifetime and is digitally controllable for precision performance.
- Stand-by mode automatically reduces blower speed to protect samples with reduced energy usage until you are ready to resume work.

Optimizing total cost of operation

Thermo Scientific™ SmartFlow™ Plus airflow compensation and balanced filters have led to safer BSCs that are easier to use and significantly less costly to operate.**

The more you use it, the more you save!



Costs, published in American Biotechnology Laboratory, September 2008.

** Compared to previous models.

*** Comparison based on 15 year life of 1.2 m wide biological safety cabinets and 2011 average costs of energy and cooling in the EuroZone. "Traditional BSC" estimates based on published product specifications for readily available BSCs using AC motor technology.

Innovative productivity enhancements simplify use, comfort and cleaning



Full color touch screen user interface – safety you can see

Our advanced yet simple to operate, graphic user interface is customer tested to provide easy navigation and convenient illustration of airflow safety and usage data to address any lingering user concerns about the cabinet functioning properly to protect them and their valuable samples. Performance details such as user interaction logs, errors and event logs are easily identified to drive continuous process improvement and reproducibility of results.



Standard SmartPort

Provided as standard with every cabinet, Thermo Scientific™ SmartPort™ provides a clean and safe approach to incorporating vacuum tubing and cables through the side wall of the biological safety cabinet, for improved organization and work efficiency. The side wall plenum is under negative pressure preventing possibility of leakage in or out of the BSC during operation.

Customization

Options are available for the Herasafe and Maxisafe 2030i. We have vast experience in designing custom adaptations to our BSCs. We can design from scratch or provide frequently requested solutions.

Large interior work space/premium 316L non-corrosive stainless steel

Conveniently large interior workspace provides ample room for incorporation of instruments and process optimization devices including robotic arms. We utilize a “brushed and sanded” finish to provide maximum scratch resistance and non-reflective properties.

Padded armrests

Adjustable ergonomic armrests are provided with each unit to assure proper arm support to reduce strain during prolonged work periods while extending reach within the cabinet. Removable gel filled comfort pads are available as an option to enhance the user experience.

Interior LED lights

Visibility within the cabinet is enhanced with the use of bright, energy efficient lighting, reducing the potential for fatigue often experienced with use of standard fluorescent lighting.

Exclusive one touch start/stop function

Exclusive one touch auto start and stop function activates or deactivate all cabinet components efficiently, and is ready to use without lengthy wait times.

Smart Clean Plus hinged front window

Our exclusive fully opening front hinged window design enables easy cleaning and full access to the cabinet interior work space for thorough cleaning/disinfection and incorporation of ancillary work tools and equipment as may be desired.



Enhanced information management with the convenience of connectivity



Most of the enhanced information provided by the touch screen interface can be remotely monitored and captured by web based or mobile app for subsequent analysis, minimizing the need for paper notebooks.

Standard USB data outputs

Enable export of data to external data systems if desired. A powered connection is included in the front panel to enable convenient accessory charging and accommodate future software update uploads.

Convenient event and alert messaging logs

Accessible in the user interface, the event and alert messaging logs provide useful and important usage data and alert information for process optimization and maintenance.

Embedded connectivity

Enables simplified information sharing with colleagues and enhances productivity through performance monitoring from anywhere, anytime improving process control, reporting and asset management, with use of the exclusive free Thermo Scientific mobile app.

Future proof

The Herasafe and Maxisafe 2030i BSC have embedded capability to be connected to the Thermo Fisher Scientific cloud by Wi-Fi. When service is available, you can connect remotely via our app, to check the equipment status, and for alerts, alarms and the user log.

Triple Filter Biological Safety Cabinet

In addition to meeting the EN 12469 Standard for Class II Biological Safety Cabinets, the Maxisafe 2030i BSC with single piece worktops is independently tested and certified to the DIN 12980, the standard for “safety cabinets for handling cytotoxic substances”.

This requires the highest personnel, product and environmental protection when working with CMR (carcinogenic, mutagenic or toxic to reproduction) compounds, including preparation of hazardous drugs in healthcare compounding pharmacies and facilities complying with USP <800>.

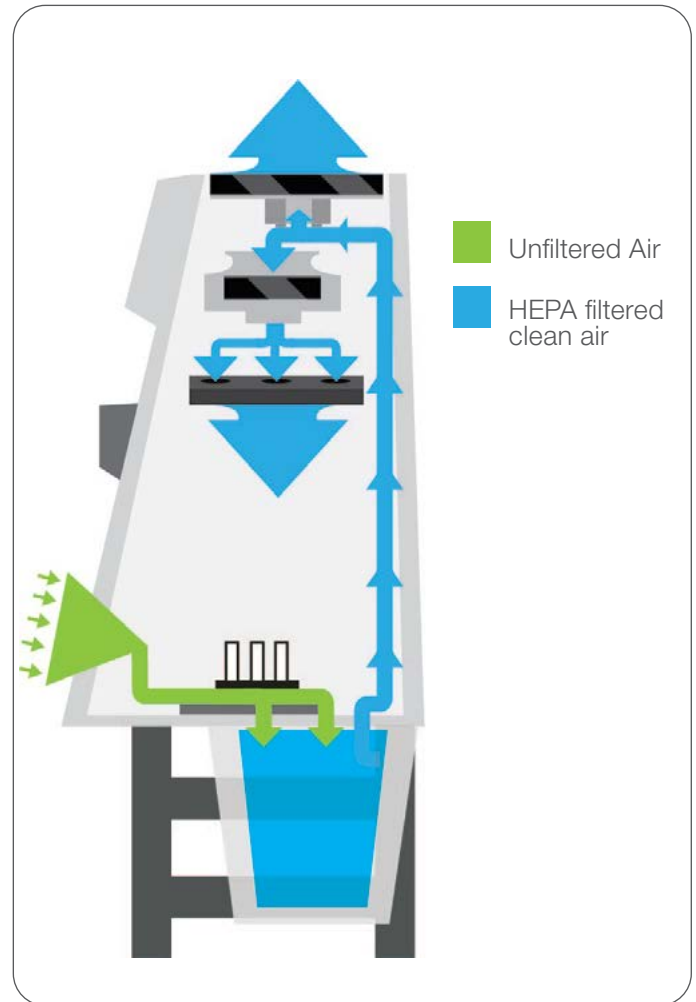
Outstanding Protection | Advanced Comfort | Superior Performance



Note that the default configuration for our Triple Filter BSC provides a single piece indented worktop. Segmented worktops can be selected from the options table at configuration stage (but will not conform to DIN 12980).

Triple Filter BSCs offer:

- A minimum ISO Class 5 air quality in the work area
- 100,000x better filtration efficiency than regular class II biological safety cabinets with the use of a unique triple filter design
- Safe (bag in-bag out) filter change in the cabinet work area under negative pressure
- A more ergonomic and comfortable work environment than traditional isolators
- The easy-to-clean system is ideal for cleanroom/GMP installations
- Tested and certified to both EN 12469 and DIN 12980.



New bridged primary filter aperture system

Our primary filter plenum now uses a bridge system improving rigidity and security. The new H14 HEPA cartridge filters have a positive location system, and anti-spill design to prevent liquid damage.



Easy and safe HEPA filter changes

The positive locating H14 HEPA filters under the work surface provide easy and safe HEPA filter changes under negative pressure.



New unique sealing system simplifies installation and testing.

Ordering Information

Herasafe 2030i BSC		EN 12469				NSF/ANSI 49		
Dimensions								
Size/Internal width	m (ft)	0.9 (3)	1.2 (4)	1.5 (5)	1.8 (6)	1.2 (4)	1.8 (6)	
External Dimension (Cabinet only)	depth	mm (in.)	800 (31.5)	800 (31.5)	800 (31.5)	800 (31.5)	800 (31.5)	
	width	mm (in.)	1000 (39.4)	1300 (51.2)	1600 (63.0)	1900 (74.8)	1300 (51.2)	1900 (74.8)
	height	mm (in.)	1536 (60.5)	1536 (60.5)	1536 (60.5)	1536 (60.5)	1536 (60.5)	1536 (60.5)
Usable Work Surface (net, without air intake grill)	depth	mm (in.)	465 (18.3)	465 (18.3)	465 (18.3)	465 (18.3)	465 (18.3)	
	width	mm (in.)	900 (35.4)	1200 (47.2)	1500 (59.1)	1800 (70.9)	1200 (47.2)	1800 (70.9)
Shipping Dimension	depth	mm (in.)	925 (36.4)	925 (36.4)	925 (36.4)	925 (36.4)	925 (36.4)	
	width	mm (in.)	1110 (43.7)	1410 (55.5)	1710 (67.3)	2010 (79.1)	1410 (55.5)	2010 (79.1)
	height	mm (in.)	1710 (67.3)	1710 (67.3)	1710 (67.3)	1710 (67.3)	1710 (67.3)	1710 (67.3)
Working height of front window	mm (in.)	200 (8)				250 (10)		
Maximum window opening (for cleaning, loading/unloading)	mm (in.)	773 (30.4)	773 (30.4)	773 (30.4)	773 (30.4)	773 (30.4)	773 (30.4)	
Work surface height	mm (in.)	750-950 (29.5-37.4)				750-950 (29.5-37.4)		
Weight								
Net weight	kg (lbs)	170 (375)	200 (441)	230 (507)	280 (617)	200 (441)	280 (617)	
Shipping weight	kg (lbs)	190 (419)	225 (496)	260 (573)	315 (694)	225 (496)	315 (694)	
Max load capacity of one-piece work surface	kg (lbs)	50 (110)	50 (110)	50 (110)	50 (110)	50 (110)	50 (110)	
Max load capacity of single segmented work surfaces (per 30cm segment)	kg (lbs)	25 (55)	25 (55)	25 (55)	25 (55)	25 (55)	25 (55)	
Electrical Data								
Voltage	V	230				120		
Hertz	Hz	50/60				60		
Protection class		1/IP20						
Filter Specification								
Specification		H14 HEPA EN1822, 99.995% MPPS						
Certifications								
Standard		EN 12469				NSF/ANSI 49		
Agency certified		TÜV *	TÜV	TÜV *	TÜV	NSF		
NF Certification by LNE (France only)			51901254					
Ergonomics and Utilities								
Lighting intensity	lux (fc)	1000 (93)	929 (86)	1500 (139)	1418 (132)	850 (79)	1300 (121)	
Interior outlets	pcs.	2 rear wall		4 rear wall		2 rear wall	4 rear wall	
Service valve ports	pcs.	2 on each side + Smart Port				2 on each side + Smart Port		
Slope of front window	degree °	10				10		
Herasafe 2030i Specifications								
Noise level (measured according to EN 12469) 200mm opening	dB (A)	57		57				
Noise level (EN units measured according to EN 12469, NSF units measured according to NSF/ANSI 49) 250mm opening		57		58		62	62	
Power consumption (in normal operation, fans on, lights on) 200mm opening	W/h	133	153	217	251			
Power consumption (in normal operation, Fans on, lights on) 250mm opening		155	175	240	300	180	316	
Power consumption (in stand-by mode)	W/h	55	55	80	80	55	80	
Normal heat output in operation mode (non-vented) 200mm opening	W/h	133	153	217	251			
Normal heat output in operation mode (non-vented) 250mm opening		155	175	240	300	180	316	
Stand-by heat output (lights off, non-vented)	W/h	55	55	80	80	55	80	
Size/Internal width	m (ft)	0.9 (3)	1.2 (4)	1.5 (5)	1.8 (6)	1.2 (4)	1.8 (6)	
Exhaust Volumes								
Exhaust volume of cabinet 200mm opening	m ³ /h (cf/m)	288 (169)	386 (227)	483 (284)	580 (341)			
Exhaust volume of cabinet 250mm opening	m ³ /h (cf/m)	370 (215)	365 (291)	486 (286)	729 (429)	582 (342)	872 (513)	
Exhaust volume, thimble ducting 200mm opening	m ³ /h (cf/m)	385 (226)	513 (302)	608 (358)	770 (453)			
Exhaust volume, thimble ducting 250mm opening	m ³ /h (cf/m)	481 (283)	642 (378)	802 (472)	963 (567)	756 (445)	1134 (667)	

* TÜV available for models with 200mm access opening

Ordering Information

Herasafe 2030i Ordering Information		EN 12469				NSF/ANSI 49	
Size/Internal width	m (ft)	0.9 (3)	1.2 (4)	1.5 (5)	1.8 (6)	1.2 (4)	1.8 (6)
200mm Sash with Cross Beam UV-C in side walls		51032328	51032329	51032330	51032331		
200mm Sash – no options included** (250mm/10" sash can be optioned)		51032324	51032325	51032326	51032327		
250mm (10") Sash with Cross Beam UV-C in side walls, indented single piece work tray and prep for 3x rear wall mount service taps						51032334	51032335
250mm (10") Sash, indented single piece work tray						51032332	51032333
Window operating aperture 10" (250mm)	Option	51901247**				Standard	

Receptacle Options

Country configurations are available to ensure correct line cord and internal receptacles are shipped with the cabinet. Standard version for EN12469 cabinets is Schuko, and for NSF cabinets is type B

Country version Switzerland	Option	51900300					
Country version UK	Option	51900303					
Country version Italy	Option	51900306					
Country version FR/B/CZ/SK/PL	Option	51900921					
Country version Australia	Option	51900449					
Country version Denmark	Option	51900481					
Country version China	Option	51900900				51900900 (230V)	
Country version Israel	Option	51901255					
Country version India	Option	51901261				51901261 (230V)	
Country version Argentina	Option					51900308 (230V)	
Country version Chile	Option					51901259 (230V)	
Country version Brazil	Option					51901260 (230V)	
Country version Korea	Option					51901324 (230V)	
Country version Hong Kong & SEA	Option					51901327 (230V)	

Stand Options

We recommend ordering a base stand to ensure a robust and stable installation of the BSC. All of our base stands have been tested with our units for stability and functionality. Choose between a fixed height, manually adjustable working height, or electrically adjustable working height. Please consider the total height of the room when choosing the right working height. Footrest and castor options are available for added convenience.

Fixed height stand charcoal grey Provides work height of 750mm	Acc.	50155665	50155666	50155667	50155668	50155666	50155668
Adjustable height stand charcoal grey Height of 680 - 880 mm	Acc.	50155688	50155689	50155690	50155691	50155689	50155691
Electric Adjustable Stand grey-white (RAL 9002)	Acc.	50117449	50109314	50117450	50109325	50109314	50109325
Footrest bar	Acc.	50051982	50051983	50051984	50051985	50051983	50051985
Castor-Set for Stand grey-white (4 pcs.) (RAL9002) Provides work height of 850 mm	Acc.	50109977				50109977	

Work Surface Options

You have the option to fully customize your new BSC to accommodate any work task. The standard EN cabinet includes our stainless steel segmented worktray for easy removal, autoclaving, and cleaning under the work surface. The standard NSF cabinet includes our stainless steel single piece indented worktray. To customize your work area, order the part number to remove the standard worktray and configure the cabinet as desired. All internal surfaces and worktrays are 316 SS.

Without table tops (negative price)	Option	51900651	51900652	51900653	51900654	51900652	51900654
Flat worksurface module (150 mm)	KAM15 Acc.	50073666				50073666	
Flat worksurface module (300 mm)	KAM30 Acc.	50072685				50072685	
Flat worksurface module (600 mm)	KAM60 Acc.	50073667				50073667	
Flat worksurface module (900 mm)	KAM90 Acc.	50076398				50076398	
Flat worksurface module (1200mm)	KAM120 Acc.	50082970				50082970	
Flat worksurface module (1500mm)	KAM150 Acc.	50122210				50122210	
Flat worksurface module (1800mm)	KAM180 Acc.	50085281				50085281	
Lowered worksurface module (600 mm)	KAML60 Acc.	50073668				50073668	
Lowered worksurface module (900 mm)	KAML90 Acc.	50073669				50073669	
Lowered worksurface module (1200 mm)	KAML120 Acc.	No	50073670			50073670	
Lowered worksurface module (1500 mm)	KAML150 Acc.	No		50073671		No	50073671
Lowered worksurface module (1800 mm)	KAML180 Acc.	No			50078750	No	50078750
Vibration dampened surface module with granite plate (300 mm)	KAMW30 Acc.	50073757				50073757	
Vibration dampened surface module with granite plate (600 mm)	KAMW60 Acc.	50076162				50076162	

Ordering Information

Herasafe 2030i Ordering Information			EN 12469				NSF/ANSI 49	
Size/Internal width		m (ft)	0.9 (3)	1.2 (4)	1.5 (5)	1.8 (6)	1.2 (4)	1.8 (6)
3 liter mini-sink table top module	KAMS30	Acc.	NSF only				50078875	
Replacement armrests KAS 30 (Set of 2 armrests 316 SS)	KAS 30		50073663				50073663	
Padded armrest 316 SS (Set of 2 including gel inserts)		Acc.	50156438				50156438	
Replacement gel pads for padded armrest (2 pcs.)		Acc.	50156437				50156437	

Additional Filter Options

Additional exhaust HEPA filters (AEF) can be fitted to the top of the BSC to provide 99.9999975% cumulative exhaust filtration. Please note that AEF filters are not a requirement for recirculating BSC's, even in the UK, where BS5726 has been superseded by EN12469, since 2000. Additional exhaust carbon filters can be fitted on top of the BSC, but should only be used for traces of solvents being used as an adjunct to microbiological study.

Additional exhaust HEPA Filter, retro-fit	KAEF	Acc.	50078857	50073772	50078856			
Additional exhaust Carbon Filter, retro-fit	KAFC	Acc.	50078783	50073773	50078784			
Grid filter set, G1 acc. To EN 779 (5 pcs)			50076846		50076921		50076846	50076921

UV Options

The UV control function is designed to preserve bulb life whilst monitoring constantly. The light is programmable via the user interface. This feature measures and tracks UV bulb use ensuring that the bulbs will not require excessive replacement due to premature and unnecessary degradation. Additionally by monitoring UV bulb age, the system auto-adjusts run time to ensure consistent sterilisation.

Cross beam UV-C light option in side walls includes protective cover							
Included in models: 51032328, 51032329, 51032330, 51032331	Standard		Standard (Cross Beam - in side walls)				
Available for models: 51032324, 51032325, 51032326, 51032327	Option		51900642 (Cross Beam - in side walls)				
Included in models: 51032334, 51032335	Standard		Standard (cross beam - in side walls)				
Available for models: 51032332, 51032333	Option		51900642 (cross beam - in side walls)				

Media Valves

Our standard BSCs feature a dual-side wall negative pressure design which allows the user to install service valves through the side access ports. We also offer factory-installed piping options on our premium units to connect utilities to the top of the BSC to conserve right to left exterior footprint.

Rear Wall Media Connections

3 utility connectors prep (rear wall) Select rear wall service taps additionally			Option				
Available for models: 51032324, 51032325, 51032326, 51032327	Option		51901251 (G3/8")				
Included in models: 51032328, 51032329, 51032330, 51032331	Standard		Included				
Available for models: 51032332, 51032333	Option		51901252 (NPT3/8")				

Rear Wall Service Taps/Media Valves (supplies are connected above BSC)

Combustible gas tap for rear wall	Acc.		50068235			50068235	
Non-combustible gas tap for rear wall	Acc.		50068234			50068234	
Water tap for rear wall	Acc.		50068233			50068233	
Vacuum tap for rear wall	Acc.		50068232			50068232	

Side Wall Service Taps/Media Valves/Lead Throughs

Combustible gas tap for side wall	Acc.		50046015			50046015	
Non-combustible gas tap for side wall	Acc.		50045959			50045959	
Water tap for side wall	Acc.		50044679			50044679	
Vacuum tap for side wall	Acc.		50044678			50044678	
Hose connection for side wall, hose dia. 10-13mm	Acc.		50059017			50059017	
Hose connection for side wall, hose dia. 3mm	Acc.		50076408			50076408	
Hose connection for side wall, hose dia. 6/3mm	Acc.		50066668			50066668	

Solenoid Valve (should be quoted with combustible gas G3/8 connection)

Solenoid valve for combustible gas tap	Acc.		50074905			50074905	
--	------	--	----------	--	--	----------	--

Exhaust Duct Connection Kits

HEPA filters do a great job of trapping particles and biohazards, but they do not trap gases and toxic chemicals that may be used as an adjunct to microbiological studies. In these applications, it is important to select an exhaust duct transition to route exhaust air out of the laboratory to the external environment. We offer two different connections that can be installed in three different ways, depending upon facility requirements.

Thimble Duct Exhaust Transition (Connection diameter 200mm/8")	KTD	Acc.	50078796	50073770	50078795	50073770	50078795
---	-----	------	----------	----------	----------	----------	----------

Ordering Information

Herasafe 2030i BSC			EN 12469				NSF/ANSI 49	
Size/Internal width		m (ft)	0.9 (3)	1.2 (4)	1.5 (5)	1.8 (6)	1.2 (4)	1.8 (6)
Direct Duct Exhaust Transition with anti blowback valve (Connection diameter 200mm/8")	KDD	Acc.	50078791	50073771		50078790		

User Convenience Options

We offer unique customer installed accessories to help organize your workspace and free up valuable space inside and around the BSC.

Hanging bar with set of 6 hooks	IVB 6 6	Acc.	50073943	No		No	
Hanging bar with set of 12 hooks	IVB 10 12	Acc.	No	50073944		50073944	
Utility basket to be used with hanging bar	KB	Acc.	50078900		50078900		
2 utility baskets incl. additional hanging bar	KBB	Acc.	50078901		50078901		

Ordering Information

Herasafe 2030i BSC			Cat. No.	m (ft)
Additional topboxes for fumigation			KSF9	Acc.
KSF frame fixed to top of each recirc cabinet to accept the relevant topbox for fumigation. Brackets are fitted to side of frame to allow the use of speed clamps. Height = 50mm			KSF12/15	Acc.
			KSF18	Acc.
			KSNB9	Acc.
KSNB topbox for use with Hydrogen Peroxide fumigation. Speed clamps allow for fixture to a KSF frame. The 35mm hole will accept a Steris OR Bioquell outlet camlock fitting. Height = 110mm with gasket.			KSNB-12/15	Acc.
			KSNB-18	Acc.
			KS-EVBOX-9	Acc.
KS-EVBOX for use with formonia system and formaldehyde. Speed clamps allow it to be clamped to KSF frame, while the 2 threaded holes accept the ABEKP3 charcoal filters. This box can only be used if the formaldehyde is being neutralized with ammonia after fumigation. Height = 110mm with gasket.			KS-EVBOX-12/15	Acc.
			KS-EVBOX-18	Acc.
			KS9DB160	Acc.
KSDB for use with formaldehyde fumigation only. Speed clamps allow for fixture to a KSP frame. This top box is supplied with a 3m flexi trunking which allows you to vent formaldehyde out into another exhausted application to purge fumes from cabinet. Side exit only. Height = 190mm with gasket.			KS12DB160	Acc.
			KS18DB160	Acc.
			KSP(FD)-9	Acc.
KSP(FD) For use with formaldehyde fumigation. Fixes to a KSF frame. Supplied with a 3m flexi trunking which allows venting of fumes to an exhausted application. Top exit only. Height = 50mm (Frame).			KSP(FD)-12/15	Acc.
			KSP(FD)-18	Acc.
			ABEKP3	Acc.
ABEKP3 charcoal filters screw into KS-EVBOX. Pack comprises of 3 filters.				

Ordering Information

Maxisafe 2030i BSC		EN 12469 & DIN12980				
Dimensions						
Size/Internal width		m (ft)	0.9 (3)	1.2 (4)	1.5 (5)	1.8 (6)
200mm Sash with Cross Beam UV-C in side walls			51032715	51032716	51032717	51032718
200mm Sash – no options included**			51032711	51032712	51032713	51032714
External Dimension (Cabinet only)	depth	mm (in.)	870 (34.3)	870 (34.3)	870 (34.3)	870 (34.3)
	width	mm (in.)	1000 (39.4)	1300 (51.2)	1600 (63.0)	1900 (74.8)
	height	mm (in.)	1536 (60.5)	1536 (60.5)	1536 (60.5)	1536 (60.5)
Usable Work Surface (net, without air intake grill)	depth	mm (in.)	465 (18.3)	465 (18.3)	465 (18.3)	465 (18.3)
	width	mm (in.)	900 (35.4)	1200 (47.2)	1500 (59.1)	1800 (70.9)
Shipping Dimension	depth	mm (in.)	970 (38.2)	970 (38.2)	970 (38.2)	970 (38.2)
	width	mm (in.)	1305 (51.4)	1605 (63.2)	1905 (75.0)	2205 (86.8)
	height	mm (in.)	1750 (68.9)	1750 (68.9)	1750 (68.9)	1750 (68.9)
Working height of front window		mm (in.)	200 (8)			
Maximum window opening (for cleaning, loading/unloading)		mm (in.)	773 (30.4)	773 (30.4)	773 (30.4)	773 (30.4)
Work surface height		mm (in.)	750-950 (29.5-37.4)			
Weight						
Net weight		kg (lbs)	200 (440)	240 (528)	280 (616)	330 (728)
Shipping weight		kg (lbs)	220 (484)	265 (583)	310 (682)	365 (803)
Max load capacity of one-piece work surface		kg (lbs)	50 (110)	50 (110)	50 (110)	50 (110)
Max load capacity of single segmented work surfaces (per 30cm segment)		kg (lbs)	25 (55)	25 (55)	25 (55)	25 (55)
Electrical Data						
Voltage		V	230 (except NA option*)			
Hertz		Hz	50/60			
Protection class			1/IP20			

Ordering Information

Maxisafe 2030i BSC		EN 12469 & DIN12980			
---------------------------	--	--------------------------------	--	--	--

Dimensions

Size/Internal width	m (ft)	0.9 (3)	1.2 (4)	1.5 (5)	1.8 (6)
---------------------	--------	---------	---------	---------	---------

Filter Specification

Specification	H14 HEPA EN1822, 99.995% MPPS				
---------------	-------------------------------	--	--	--	--

Certifications

Standard	EN 12469 & DIN 12980				
Agency certified	TÜV	TÜV	TÜV	TÜV	

Ergonomics and Utilities

Lighting intensity	lux (fc)	1000 (93)	929 (86)	1500 (139)	1418 (132)
Interior outlets	pcs.	2 rear wall		4 rear wall	
Service valve ports	pcs.	2 on each side + Smart Port			
Slope of front window	degree °	10			

Maxisafe 2030i Specifications

Noise level (measured according to EN 12469)	dB (A)	57	59	59	
Power consumption (in normal operation, fans on, lights on)	W/h	230	240	390	390
Power consumption (in night set back mode if available, lights off)	W/h	55	55	80	80
Normal heat output in operation mode (non-vented)	W/h	230	240	390	390
Reduced Flow Heat Output (lights off, non-vented)	W/h	55		80	
Exhaust volume of cabinet	m ³ /h (cf/m)	288 (169)	386 (227)	483 (284)	580 (341)
Exhaust volume, thimble ducting	m ³ /h (cf/m)	385 (226)	513 (302)	641 (377)	770 (453)
Size/Internal width	m (ft)	0.9 (3)	1.2 (4)	1.5 (5)	1.8 (6)

Receptical Orders

Country configurations are available to ensure correct line cord and internal receptacles are shipped with the cabinet. Standard version is Schuko if no other country version is specified

Country Version Switzerland	Option	51900300
Country Version UK	Option	51900303
Country Version Italy	Option	51900306
Country Version FR/B/CZ/SK/PL	Option	51900921
Country Version Australia	Option	51900449
Country Version Denmark	Option	51900481
Country Version China	Option	51900900
Country Version Israel	Option	51901255
Country Version India	Option	51901261
Country Version USA (NA 120V*)	Option	51901281
Country Version Argentina	Option	51900308
Country Version Chile	Option	51901259
Country Version Brazil	Option	51901260

A height adjustable stand is included with the Triple Filter BSC providing working height between 680mm-880mm

Work Surface Options

You have the option to fully customize your BSC to accommodate any work task. The standard EN/DIN cabinet includes a single piece indented 316 stainless steel work tray. Any of the options below or combinations are available for the Maxisafe 2030i, but note that the DIN12980 certification is negated on anything but the indented version we include as standard.

without table tops (negative price)	Option	51900651	51900652	51900653	51900654
Flat Worksurface module (150 mm)	KAM15 Acc.	50073666			
Flat Worksurface module (300 mm)	KAM30 Acc.	50072685			
Flat Worksurface module (600 mm)	KAM60 Acc.	50073667			
Flat Worksurface module (900 mm)	KAM90 Acc.	50076398			
Flat worksurface module (1200mm)	KAM120 Acc.	50082970			
Flat worksurface module (1500mm)	KAM150 Acc.	50122210			
Flat worksurface module (1800mm)	KAM180 Acc.	50085281			
Indented Worksurface module (600 mm)	KAML60 Acc.	50073668			
Indented Worksurface module (900 mm)	KAML90 Acc.	50073669			
Indented Worksurface module (1200 mm)	KAML120 Acc.	No	50073670		
Indented Worksurface module (1500 mm)	KAML150 Acc.	No		50073671	
Indented Worksurface module (1800 mm)	KAML180 Acc.	No			50078750

Ordering Information

Maxisafe 2030i BSC		EN 12469 & DIN12980			
Dimensions					
Size/Internal width	m (ft)	0.9 (3)	1.2 (4)	1.5 (5)	1.8 (6)
Vibration dampened surface module with granite plate (300 mm)	KAMW30	Acc.	50073757		
Vibration dampened surface module with granite plate (600 mm)	KAMW60	Acc.	50076162		
3 liter mini-sink table top module	KAMS30	Acc.	50078875		
Replacement armrests KAS 30 (Set of 2 arm rests 316 SS)	KAS 30		50073663		
Padded armrest 316 SS (Set of 2 including gel inserts)		Acc.	50156438		
Replacement gel pads for padded armrest (2 pcs.)		Acc.	50156437		
UV Options					
The UV control function is designed to preserve bulb life whilst monitoring constantly. The light is programmable via the user interface. This feature measures and tracks UV bulb use ensuring that the bulbs will not require excessive replacement due to premature and unnecessary degradation. Additionally by monitoring UV bulb age, the system auto-adjusts run time to ensure consistent sterilization.					
Cross beam UV-C light option is side walls includes protective cover					
Included in models: 51032715, 51032716, 51032717, 51032718		Standard	Standard (Cross Beam - in Side Walls)		
Available for models: 51032711, 51032712, 51032713, 51032714		Option	51900642 (Cross Beam - in Side Walls)		
Media Valves					
Our standard BSCs feature a dual-side wall negative pressure design which allows the user to install service valves through the side access ports. We also offer factory-installed piping options on our premium units to connect utilities to the top of the BSC to conserve right to left exterior footprint.					
Rear Wall Media Connections					
3 Utility Connectors prep (rear wall)-Select rear wall service taps additionally		Option			
Available for models: 51032711, 51032712, 51032713, 51032714		Option	51901251 (G3/8")		
Included in models: 51032716, 51032717, 51032718, 51032719		Standard	Included		
Available for USA country versions		Option	51901252 (NPT3/8)		
Rear Wall Service Taps/Media Valves (supplies are connected above BSC)					
Combustible Gas Tap for rear wall		Acc.	50068235		
Non-combustible Gas Tap for rear wall		Acc.	50068234		
Water Tap for rear wall		Acc.	50068233		
Vacuum Tap for rear wall		Acc.	50068232		
Side Wall Service Taps/Media Valves/Lead Throughs					
Combustible Gas Tap for side wall		Acc.	50046015		
Non-combustible Gas Tap for side wall		Acc.	50045959		
Water Tap for side wall		Acc.	50044679		
Vacuum Tap for side wall		Acc.	50044678		
Hose connection for side wall, hose dia 10-13 mm		Acc.	50059017		
Hose connection for side wall, hose dia 3 mm		Acc.	50076408		
Hose connection for side wall, hose dia 6/3 mm		Acc.	50066668		
Solenoid Valve (Should be quoted with combustible gas G3/8 connection)					
Solenoid Valve for Combustible Gas Tap		Acc.	50074905		

Not all BSCs are manufactured to the same safety standards. Our design philosophy is grounded in compliance with the recognized worldwide safety standards, because your work cannot compromise on safety. Our biological safety cabinets are subjected to all the following certifications:



EN 12469

Our Class II biological safety cabinets are independently tested and certified to EN 12469 standard for Class II biological safety cabinets by TÜV Nord, the leading testing agency in Europe.



NF EN 12469

Our Herasafe 2030i class II biological safety cabinet (1.2 m model) has been independently tested and certified to EN 12469 with the NF mark by LNE, the leading testing agency in France.



NSF

Our Class II biological safety cabinets are independently tested and certified to NSF/ANSI 49, by NSF International, a leading testing agency in North America and recognized globally.

Find out more at thermofisher.com/bsc

ThermoFisher
SCIENTIFIC

This product is intended for General Laboratory Use. It is the customer's responsibility to ensure that the performance of the product is suitable for the specific use or application. © 2018-2020 Thermo Fisher Scientific Inc. All rights reserved. All trademarks are the property of Thermo Fisher Scientific and its subsidiaries unless otherwise specified. **COSAFE2030 0620**