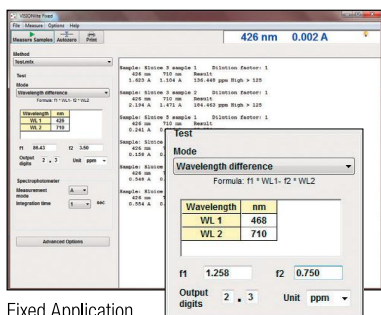


Rate Application



Fixed Application

Advanced Options

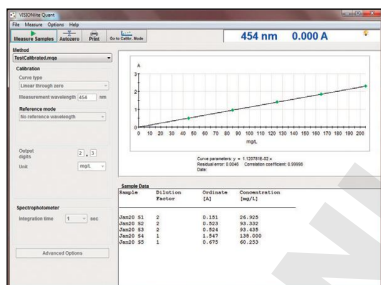
Start delay
Wait time: 0 sec

Repetitive measurement
Total run time: 0 min Interval time: 0 sec

Result limits
High limit: 275 ppm Output text: Fail high
Low limit: 225 ppm Output text: Fail low

OK Cancel

VISION/ite 5 will apply QC Pass/Fail criteria automatically and print the error condition with the sample report.



Quant Application

Scan – High Resolution Spectra in Seconds

Scanning under VISION/ite 5 offers several advantages over the same measurement on a local control system.

- Peak pick to identify and label wavelength peaks or valleys
- Overlay spectra for visual comparison
- Import, save or export data in native or CSV format for easy archiving and report generation
- Auto scaling of data plus simple zoom controls for detailed examination of spectra

Rate – Measurement of Reaction Kinetics

Add capability beyond the local control for SPECTRONIC 200 and GENESYS 20. The Rate application enables you to determine kinetic parameters by measuring the absorbance at a specific wavelength over a period of time.

- Measure multi-cell kinetics in parallel or serial mode
- Automatic enzyme activity calculation
- Automatic data storage plus import or export your data in CSV format
- Measure up to 100 samples in a single data set

Fixed – Monitor Concentration Using Factor Methods

Program your standard methods to run with automatic calculation of the reportable result in the correct unit.

- Measure at one or multiple wavelengths
- Apply factors and equations to your data to generate results directly
- Addition, subtraction, ratio and baseline correction options
- Display results with units from a menu or define your own custom unit
- Run standard bio-tests using the pre-programmed protein and DNA methods included with the software
- Save or print your results as a report, or export data in CSV format to use in your own template

Ordering Information

Description	Part Number
VISION/ite 5 Software DVD. Includes software and operator's manual (English and German)	834-091300
Air-Cooled Peltier Single Cell Holder System (GENESYS 10S, BioMate 3S or Evolution 60S)	222-238100
Economy Sipper Systems for Visible or UV-Visible analysis (GENESYS 10S, BioMate 3S or Evolution 60S)	699-XXXXXX*
VISION/ite Olive Oil Analysis Methods	869-128500
Reporter-SPX Custom Report Template Software	869-127400
RS232 Cable (GENESYS 20)	335942-000
Standard USB Cable (SPECTRONIC 200, GENESYS 10S and 10S Bio, BioMate 3S, and Evolution 60S)	085-820200

* Ask your Thermo Fisher Scientific distributor which Sipper System would be best for your analysis.

Ask your Thermo Fisher Scientific equipment distributor about additional application specific software for our spectrophotometers: VISION/ite ColorCalc – Software for color determination.

Quant – Determination of Sample Concentration Based on Standards

Prepare a series of standards to define a calibration curve, apply up to a cubic fit to your data, then measure samples and report concentrations based on your calibration.

- More standards and non-linear curve fitting options offer greater confidence and accuracy than can be accomplished under local control on SPECTRONIC 200 and GENESYS 20
- Choose from 11 pre-programmed reporting units or define your own
- Apply dilution factors in software to allow you to keep data for all your samples in range without doing off-line calculations
- Automatic data saving for peace of mind
- Save or print your results as a report, or export data in CSV format to use in your own template

Performance Verification

Being able to document that your instrument is giving valid data can be crucial in quality control environments. Select from the range of available Performance Verification tests that is customized to your instrument's specifications. VISION/ite 5 will prompt you to present the correct reference materials in order, and then print a complete report for your compliance file.

Expand Your Possibilities

Get more out of your spectrophotometer system with method packs for VISION/ite 5. Options include standard methods for niche applications such as analysis of olive oil or wine.

User Interface Languages

VISION/ite 5 software installs with the user interface configured in any of these languages:

- English
- Portuguese
- Chinese
- Spanish
- Korean
- French
- German
- Italian

www.thermoscientific.com

©2015 Thermo Fisher Scientific Inc. All rights reserved. Microsoft and Windows are registered trademarks of Microsoft Corp. All other trademarks are the property of Thermo Fisher Scientific and its subsidiaries. Specifications, terms and pricing are subject to change. Not all products are available in all countries. Please consult your local sales representative for details.

Africa +43 1 333 50 34 0
Australia +61 3 9757 4300
Austria +43 810 282 206
Belgium +32 53 73 42 41
Canada +1 800 530 8447
China +86 21 6865 4588

Denmark +45 70 23 62 60
Europe-Other +43 1 333 50 34 0
Finland/Norway/Sweden
 +46 8 556 468 00
France +33 1 60 92 48 00
Germany +49 6103 408 1014

India +91 22 6742 9494
Italy +39 02 950 591
Japan +81 45 453 9100
Latin America +1 561 688 8700
Middle East +43 1 333 50 34 0
Netherlands +31 76 579 55 55

New Zealand +64 9 980 6700
Russia/CIS +43 1 333 50 34 0
Spain +34 914 845 965
Switzerland +41 61 716 77 00
UK +44 1442 233555
USA +1 800 532 4752

Thermo
SCIENTIFIC

A Thermo Fisher Scientific Brand