



Thermo Scientific
Wellwash and Wellwash Versa
Microplate Strip Washers



Easy washing for

reliable ELISA results

- convenience
- versatility
- security

Thermo
SCIENTIFIC

Thermo Scientific Wellwash and Wellwash Versa – Ease of use, convenience and versatility for washing microplates in ELISA assays

The Thermo Scientific Wellwash and Wellwash Versa are easy-to-use strip washers for 96-well plates that offer convenience through a graphical user interface, nine language versions and a USB port.

The Wellwash® is the basic model for washing 96-well plates. It is intended for use when only a few similar assays are run routinely. The Wellwash Versa is the advanced model for 96-well plates which can also wash cells and 384-well plates, offering enhanced flexibility needed for research use.

Thermo Scientific Wellwash and Wellwash Versa offers

- Easy set-up of wash protocols through a large color screen and a visual user interface
- Convenience with internal software available in nine languages: English, French, German, Italian, Spanish, Portuguese, Russian, Japanese, and Chinese
- A USB port for transferring protocols between several washers and for printing reports and log files
- A sweep mode to guarantee an extremely low residual volume in the well, resulting in excellent washing performance and reliable assay results
- Adjustable wash parameters, such as dispense and aspiration height and the aspiration speed for optimal washing performance

In addition Wellwash Versa offers

- Wide selection of wash heads for 96-well plates and 1x16 wash head for 384-well plates
- Specially designed 2 x 8 cell wash head for gentle washing of cells in a 96-well plate
- Two wash bottles and one rinse bottle for increased flexibility
- Possibility to connect to automation systems

Easy and convenient to use

The large color screen makes the Thermo Scientific Wellwash and Wellwash Versa very easy and convenient to use. The user interface is logical and intuitive, requiring minimal training so that protocols can be developed quickly. Ready made demo protocols and a context-sensitive help feature is included in both instruments. The internal software is available in nine languages (English, French, German, Spanish, Italian, Portuguese, Russian, Japanese, and Chinese) adding more convenience of use.

Color-coded tube fittings and liquid level sensor cables enable fast instrument set-up. The removable priming vessel and built-in maintenance programs offer easy maintenance. A quick change of wash heads facilitates the use of different plate types and applications.

Optimal washing performance for reliable assay results

The Wellwash washers efficiently remove liquid from wells. Very low residual volumes eliminate high background signal to ensure reliable assay results without the possibility of decreased assay sensitivity or false positive or negative test results.

Residual volumes are further minimized by the crosswise sweep aspiration mode. By adjusting wash parameters, such as the number of wash cycles, soaking time, shaking speed, dispense and aspiration height, and the aspiration speed, washing performance can be optimized to guarantee that the best possible washing performance is achieved.



Wellwash Versa



Wellwash

Reliable and secure performance

The wash and waste bottles in the Wellwash washers are not pressurized to minimize the risk of spillage and to prevent the washing liquid from being drawn into the aspiration pump, which could damage the instrument. For added convenience, users can substitute bottles of different sizes.

After using the instrument, the automatic rinse feature can be set to operate in a specified time sequence to ensure that the liquid channels do not get clogged. The auto-prime feature dispenses a small amount of liquid at a selected time interval.

The liquid level sensors in both the wash and waste bottles guarantee safe performance. The plate sensor recognizes if a plate is present or not. The aerosol cover prevents aerosols of infectious diseases from spreading.

Added versatility for research use

Both washers feature linear shaking to increase washing efficiency. A USB flash memory stick transfers protocols between the PC and the washer, or several washers. It also facilitates easy exporting of log files and reports.

A specially-designed wash head is available for cell washing in 96-well plates. The wash parameters of the Wellwash Versa can be adjusted to achieve a gentle wash to remove excess liquid without disturbing the cell layer, critical for cell washing applications.

Bottle stands for the included bottles as well as a special stand for user bottles are available for added convenience. A four liter wash bottle and a nine liter waste bottle are also available for the Wellwash Versa for automation applications.

To increase assay throughput, the Wellwash Versa can be connected to automation systems such as the Thermo Scientific RapidStak microplate stacker.

In addition the Installation Qualification (IQ), Operation Qualification (OQ) and Performance Qualification (PQ) documents and service packages are available.

Accessories

Bottle stands



Bottle stand 1 x 2 configuration Wellwash



Bottle stand 1 x 4 configuration Wellwash Versa



Bottle stand 2 x 2 configuration Wellwash Versa



Bottle stand for user bottles

Bottle sizes



9 l waste bottle

2 l wash bottle

4 l wash bottle

Wash heads



1 x 8 wash head



2 x 8 Cell wash head



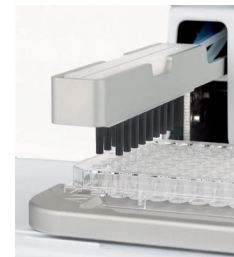
1 x 12 wash head



1 x 16 wash head



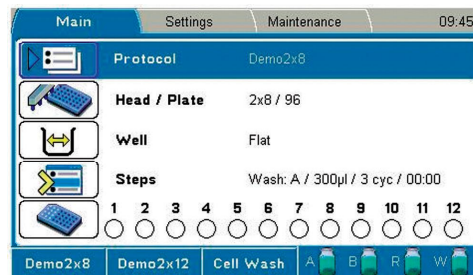
Wellwash with 1x8 wash head



Wellwash Versa with two 1x8 wash heads



Wellwash Versa with a USB flash memory stick



Wellwash Versa user interface - main view

Technical Specifications		
Feature	Wellwash	Wellwash Versa
Number of wash buffer bottles	1	Up to 3
Bottles	2 l wash bottle, 2 l waste bottle	2 x 2 l wash bottles, 1 x 2 l rinse bottle, 4 l waste bottle
Wash heads	1x8 wash heads for 96-well plate supplied with the instrument 1x12 wash head for 96-well plate available as option	Two 1x8 wash heads for 96-well plate supplied with the instrument Two 1x12 wash heads and 2x8 cell wash head for 96-well plate and 1x16 wash head for 384-well plate available as option
Plate types	96-well plates	96-, 384-well plates
Wash volume	50-1000 µl	50-1000 µl (96-well plate), 20-300 µl (384-well plate)
Prime volume	5 -100 ml	5 -100 ml
Rinsing volume	5 -100 ml	5 -100 ml
Dispensing volume	50 - 400 µl	50 - 400 µl (96-well plate), 20 - 120 µl (384-well plate)
Residual volume	< 1.5 µl	< 1.5 µl
Data connection	USB port	USB port
Dispense accuracy:	< 5% @ 300 µl at room temperature, with 1 x 8 or 1 x 12 wash head	< 5% @ 300 µl at room temperature, with n x 8 or n x 12 wash head < 5% @ 250 µl, with 2 x 8 cell wash head < 5% @ 100 µl, with 1 x 16 wash head
Dispense precision:	< 3% (CV) @ 300 µl (96-well plate), with 1 x 8 or 1 x 12 wash head	< 3% (CV) @ 300 µl, with n x 8, n x 12 wash heads < 3% (CV) @ 100 µl, with 1 x 16 wash head
Number of wash protocols	Up to 99	Up to 99
Robot compatible	No	Yes (USB or RS-232C)
Dimensions (HxWxD)	345 x 385 x 240 mm 13.6 x 15.2 x 9.4 in.	345 x 385 x 240 mm 13.6 x 15.2 x 9.4 in.
Weight	9 kg (20 lbs.)	9 kg (20 lbs.)

Ordering Information	
Catalog Number	Description
5165000	Wellwash, 100-240 V, 50/60 Hz, includes 1 x 8 wash head, 1 x 2 l wash bottle, 1 x 2 l waste bottle, aerosol cover
5165010	Wellwash Versa, 100-240 V, 50/60 Hz, includes two 1x8 wash heads, 2 x 2 l wash bottle, 1 x 2 l rinse bottle, 1 x 4 l waste bottle, aerosol cover

Wellwash Accessories			
Catalog Number	Description	Wellwash	Wellwash Versa
N10800	1 x 8 wash head	X	X
N10801	1 x 12 wash head	X	X
N10802	2 x 8 cell wash head, Wellwash Versa	-	X
N10803	1 x 16 wash head, Wellwash Versa	-	X
N10804	Blank wash head, Wellwash Versa	-	X
N10805	2 l wash bottle, Wellwash	X	-
N10806	2 l waste bottle, Wellwash	X	-
N10807	2 l wash bottle A, Wellwash Versa	-	X
N10808	2 l wash bottle B, Wellwash Versa	-	X
N10809	2 l rinse bottle, Wellwash Versa	-	X
N10810	4 l waste bottle, square	X	X
N10811	4 l wash bottle A, round	X	X
N10812	4 l wash bottle B, round, Wellwash Versa	-	X
N10813	4 l rinse bottle, round, Wellwash Versa	-	X
N10814	9 l waste bottle, rectangular, Wellwash Versa	-	X
N10815	Aerosol cover, Wellwash	X	-
N10816	Aerosol cover, Wellwash Versa	-	X
N10817	Bottle stand 1 x 2 configuration (2 x 2 l bottles), Wellwash	X	-
N10818	Bottle stand 2 x 2 configuration (3 x 2 l bottles, 1 x 4 l bottle, square), Wellwash Versa	-	X
N10819	Bottle stand 1 x 4 configuration (3 x 2 l bottles, 1 x 4 l bottle, square), Wellwash Versa	-	X
N10820	Bottle stand for user bottles	X	X
N10821	Spare bottle 2 l	X	X
N10822	Spare bottle 4 l, round	X	X
N09541	Priming vessel	X	X

North America: USA/Canada 800 345 0206 or 800 522 7763 3
 Europe: Austria +43 1 801 40 0, Belgium +32 53 73 42 41, France +33 2 2803 2180, Germany national toll free 08001-536 376, Germany international +49 6184 90 6000, Italy +39 02 02 95059 -652, Netherlands +31 76 571 4440, Nordic/Baltic countries +358 9 329 100, Russia/CIS +7 (495) 739 76 41, Spain/Portugal +34 93 223 09 18, Switzerland +41 44 454 12
 12, UK/Ireland +44 870 609 9203 or 44 (0) 161 486 2110
 Asia: China +86 21 6865 4588 or +86 10 8419 3588, India toll free 1800 22 8374, India +91 22 6716 2200, Japan +81 45 453 9220,
 Other Asian countries +852 2885 4613 Countries not listed: +49 6184 90 6940 or +33 2 2803 2180
www.thermoscientific.com/wellwash

© 2011 Thermo Fisher Scientific Inc. All rights reserved. All trademarks are the property of Thermo Fisher Scientific Inc. and its subsidiaries. Specifications, terms and pricing are subject to change. Not all products are available in all countries. Please consult your local sales representative for details.

Thermo
 SCIENTIFIC
 Part of Thermo Fisher Scientific

BRALH Wellwash 0811
 1513050