

6 x Loading Buffer BLUE

Cat. No.	size
E0260-01	5 x 1 ml

Storage Conditions:

Store at +4°C (stable for 12 months).

Long term storage: -20°C.

Description:

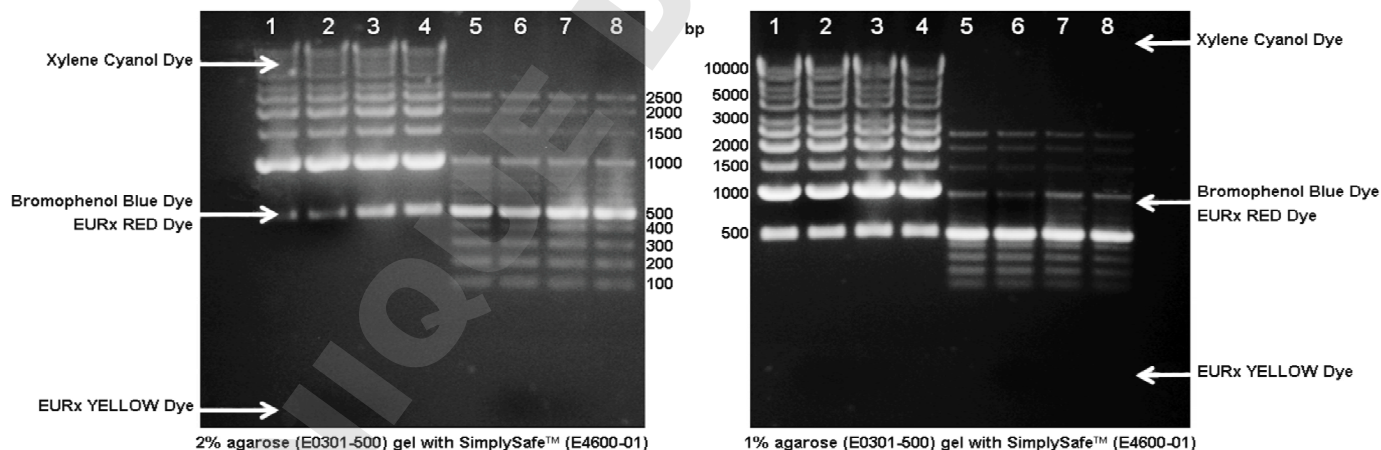
6 x Loading Buffer BLUE is designated for preparation DNA samples for loading on agarose and polyacrylamide gels. The glycerol content increases the density of the sample and ensures that DNA form a layer at the bottom of the well. EDTA is known for inhibition of metal dependent nucleases. Tracking dyes permit monitoring of progress of electrophoresis.

Buffer Composition:

100 mM Tris-HCl (pH 8.0), mix of dyes (Xylene Cyanol and Bromophenol Blue), 30% glycerol, 100 mM EDTA (pH 8.0).

Recommended use:

1. Add 1 part of the buffer per 5 parts of DNA sample.
2. The exact position of dyes: Bromophenol Blue and Xylene Cyanol depends on the percentage of agarose gel and buffer system used (see below).



- 1 - Perfect 1kb DNA Ladder (E3130) with Loading Buffer BLUE (E0260-01)
- 2 - Perfect 1kb DNA Ladder (E3130) with Loading Buffer RED (E0261-01)
- 3 - Perfect 1kb DNA Ladder (E3130) with Loading Buffer GREEN (E0262-01)
- 4 - Perfect 1kb DNA Ladder (E3130) with Loading Buffer YELLOW (E0263-01)
- 5 - Perfect 100 bp DNA Ladder (E3134) with Loading Buffer BLUE (E0260-01)
- 6 - Perfect 100 bp DNA Ladder (E3134) with Loading Buffer RED (E0261-01)
- 7 - Perfect 100 bp DNA Ladder (E3134) with Loading Buffer GREEN (E0262-01)
- 8 - Perfect 100 bp DNA Ladder (E3134) with Loading Buffer YELLOW (E0263-01)

This product is developed, designed and sold exclusively for research purposes and in vitro use only.

EURx Ltd. 80-297 Gdańsk Poland ul. Przyrodników 3, NIP 957-07-05-191, KRS 0000202039
www.eurx.com.pl, orders@eurx.com.pl, tel. +48 58 524 06 97, fax +48 58 341 74 23