

Biochemicals
Electrophoresis
Bioseparation
Life Sciences
Specials

SERVAGel™ N

Vertical precast gels for native PAGE

Why native PAGE?

The analysis of protein samples is often performed by SDS PAGE. Due to the denaturing conditions, this method is not suitable to analyse multi-protein complexes. Native proteins can be analysed by Blue or Clear Native PAGE.

Blue Native (BN) PAGE

- Substitution of the denaturing detergent SDS by SERVA Blue G (Cat. No. 35050) or Coomassie Brilliant Blue G250 (Cat. No. 17524)
- Formation of negatively charged protein-dye complexes without changing the native protein structure
- Isoelectric point (pI)-independent migration of the protein-dye complexes towards the anode at physiological pH

Clear Native (CN) PAGE

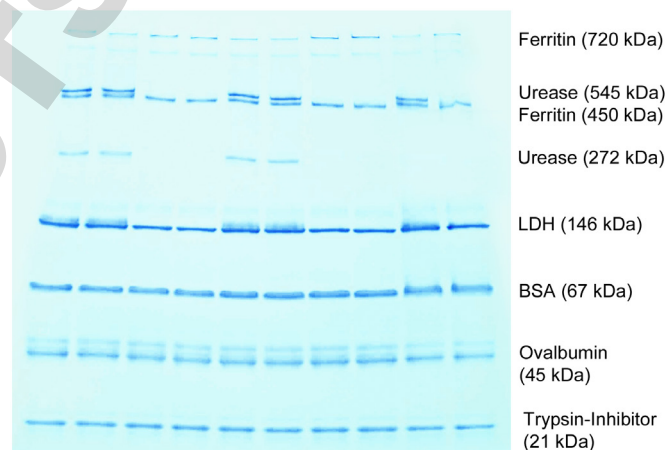
- No use of anionic dyes
- pH-dependent net charge of proteins determines the migration within the electric field
- Separation of proteins with pI < 7 at physiological pH
- method of choice if subsequent analysis are dye-sensitive

Ordering Information

Product	Quantity	Cat. No.
SERVAGel™ N 3 - 12, Vertical Native Gel 3 - 12 %, 12 wells	10 gels	43250.01
SERVAGel™ N 3 - 12, Vertical Native Gel 3 - 12 %, 10 wells	10 gels	43251.01
SERVAGel™ N 4 - 16, Vertical Native Gel 4 - 16 %, 10 wells	10 gels	43252.01
SERVAGel™ N 4 - 16, Vertical Native Gel 4 - 16 %, 12 wells	10 gels	43253.01
SERVAGel™ N Native Gel Starter Kit (contains 4 gels, buffers, Blue G solution and native marker mix)	1 kit	43204.01

SERVAGel™ N Vertical Native Gel

- Suitable for both Blue and Clear Native PAGE
- Ready-to-use precast gels
- Available as gradient gels: 3-12 % and 4-16 %
- Available with 10 or 12 sample wells
- Produced in stable, environment-friendly plastic cassettes



SERVAGel™ N, gradient 4-16 % Clear Native PAGE of marker proteins

Buffers:

1x Anode buffer for BN/CN (Cat. No. 42535)

1x Cathode Buffer for BN/CN (Cat. No. 42536)

Electrophoresis conditions:

10 min U: 50 V const.

120 min U: 200 V const.

Ordering Information (related products)

Product	Quantity	Cat. No.
10x Native Anode Buffer for BN/CN PAGE	1 L	42535.01
10x Native Cathode Buffer for BN/CN PAGE	500 mL	42536.01
2x Sample Buffer for BN PAGE	20 mL	42533.01
2x Sample Buffer for CN PAGE	20 mL	42534.01
SERVA Native Marker Liquid Mix for BN/CN PAGE	5 x 50 µL	39219.01
SERVA Blue G Solution (1 %) for BN PAGE	20 mL	42538.01

SERVA Electrophoresis GmbH

Carl-Benz-Str. 7 · D-69115 Heidelberg · Germany

Phone: +49 (0) 6221 13840-0 · Fax: +49 (0) 6221 13840-10

E-Mail: info@serva.de · Internet: www.serva.de

