

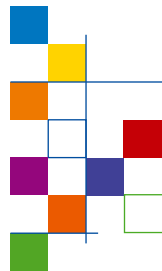
SERVA Gel™ Precast Gels

Your best choice in protein gel electrophoresis

Precast polyacrylamide gels in mini format (10 x 10 cm)

SDS free for native and SDS PAGE

SERVA
Electrophoresis



The SERVA PRiME™ System

PRiME™ - Premium Resolution in Minigel Electrophoresis

- BlueVertical™ PRiME™ mini gel electrophoresis apparatus
- SERVAGel™ PRiME™ precast mini gels at 10 x 10 x 0.7 cm
- High resolution in protein electrophoresis
- Separation range down to 3 kDa and up to over 200 kDa
- Run gels with Laemmli loading and running buffer
- Separation pattern comparable to standard Laemmli gels
- Long shelf life (> 1 year), ideal suited for stocking of gels in the lab
- Available as homogeneous and gradient gels
- With 10 or 12 sample wells, 2D well
- Running time approx. 35 minutes

It's PRiME™ Time



SERVAge™ TG PRiME™

Homogeneous Gels

- Separation range from 3 kDa up to 200 kDa
- Run gels with Laemmli buffer system
- Available in 4 different AA concentrations: 8 %, 10 %, 12 % and 14 %
- Available with 10 or 12 sample wells

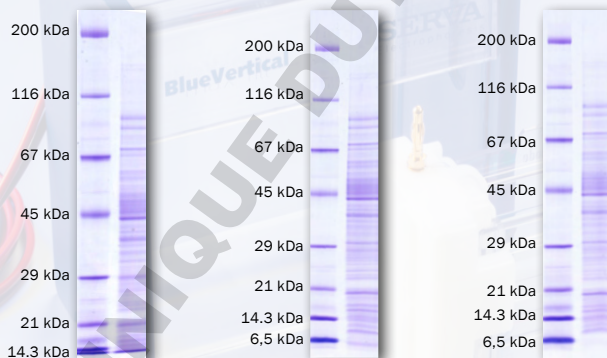


| SERVAge™ TG PRiME 8 % | | SERVAge™ TG PRiME 10 % | | SERVAge™ TG PRiME 12 % | | SERVAge™ TG PRiME 14 % | |
|--------------------------|----------|---------------------------|----------|---------------------------|----------|---------------------------|----------|
| 10 gels | 10 gels | 10 gels | 10 gels | 10 gels | 10 gels | 10 gels | 10 gels |
| 10 wells | 12 wells | 10 wells | 12 wells | 10 wells | 12 wells | 10 wells | 12 wells |
| 43261.01 | 43260.01 | 43264.01 | 43263.01 | 43267.01 | 43266.01 | 43270.01 | 43269.01 |

SERVAGel™ TG PRiME™

Gradient Gels

- Separation range from 3 kDa up to 200 kDa
- Run gels with Laemmli buffer system
- Available in 3 different AA concentrations: 4–12 %, 4–20 % and 8–16 %
- Available with 10 or 12 sample wells

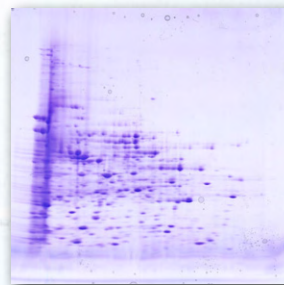
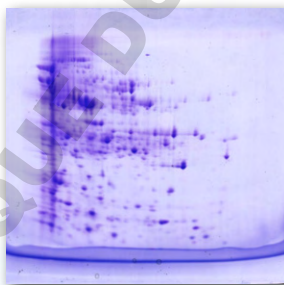
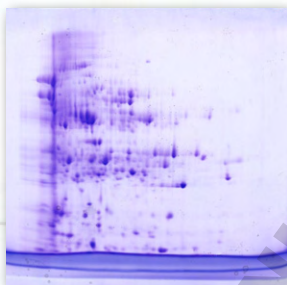


| SERVAGel™ TG PRiME 4–12 % | | SERVAGel™ TG PRiME 4–20 % | | SERVAGel™ TG PRiME 8–16 % | |
|------------------------------|----------|------------------------------|----------|------------------------------|----------|
| 10 gels | 10 gels | 10 gels | 10 gels | 10 gels | 10 gels |
| 10 wells | 12 wells | 10 wells | 12 wells | 10 wells | 12 wells |
| 43274.01 | 43273.01 | 43277.01 | 43276.01 | 43280.01 | 43279.01 |

SERVAge™ TG PRiME™

2D Gels

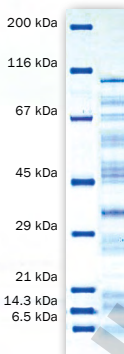
- Separation range from 3 kDa up to 200 kDa
- Run gels with Laemmli buffer system
- Available in 3 different AA concentrations: 12 %, 14 % and 8–16 %
- 2D well optimized for protein transfer from strip to gel



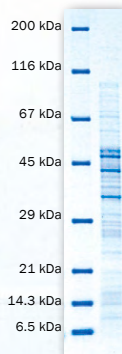
| SERVAge™ TG PRiME 12 % 2D | SERVAge™ TG PRiME 14 % 2D | SERVAge™ TG PRiME 8–16 % 2D |
|------------------------------|------------------------------|--------------------------------|
| 10 gels | 10 gels | 10 gels |
| 2D well | 2D well | 2D well |
| 43268.01 | 43271.01 | 43281.01 |

SERVAge™ Neutral Gels

- Separation range from 5 kDa up to 200 kDa
- Long shelf life (> 1 year)
- Available as homogeneous and gradient gel
- Usage of different buffer systems



SERVAge™ Neutral



SERVAge™ Neutral Gradient

| SERVAge™ Neutral | SERVAge™ Neutral | SERVAge™ Neutral Gradient | SERVAge™ Neutral Gradient |
|------------------|------------------|---------------------------|---------------------------|
| 10 gels | 10 gels | 10 gels | 10 gels |
| 10 wells | 12 wells | 10 wells | 12 wells |
| 43222.01 | 43220.01 | 43223.01 | 43221.01 |

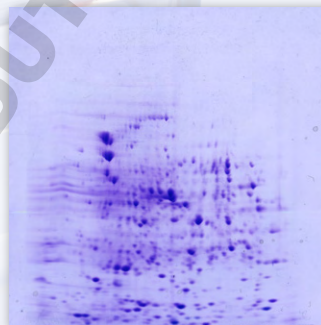
SERVAGel™ Neutral Gel HSE

- Optimized for High Speed Electrophoresis (HSE)

- 1D SDS PAGE: 20 minutes

- 2 D SDS PAGE: 30 minutes (2nd dimension)

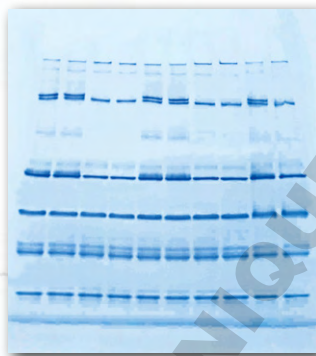
- Available with 10 or 12 wells, 2D well



| SERVAGel™ Neutral HSE | SERVAGel™ Neutral HSE | SERVAGel™ Neutral HSE 2D |
|--------------------------|--------------------------|-----------------------------|
| 10 gels | 10 gels | 10 gels |
| 10 wells | 12 wells | 2D well |
| 43246.01 | 43245.01 | 43247.01 |

SERVAGel™ Native Gels

- Suitable for both Blue and Clear Native PAGE
- Available as gradient gels 3–12 % and 4–16 %
- Available with 10 or 12 wells
- Ready-to-use anode, cathode and sample buffers are available



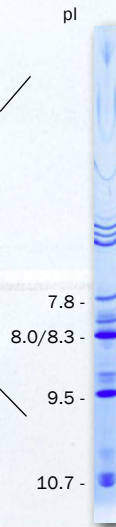
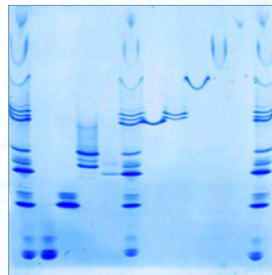
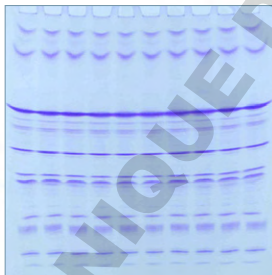
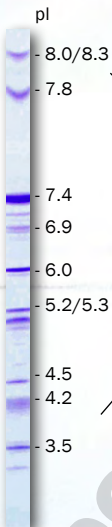
Ferritin horse (720 kDa)
 Urease jack bean (545 kDa)
 Ferritin horse (450 kDa)
 Urease jack bean (272 kDa)
 Lactate dehydrogenase porcine (146 kDa)
 Albumin bovine (67 kDa)
 Albumin egg (45 kDa)
 Trypsin inhibitor soybean (21 kDa)

| SERVAGel™ Native 3–12 % | SERVAGel™ Native 3–12 % | SERVAGel™ Native 4–16 % | SERVAGel™ Native 4–16 % |
|----------------------------|----------------------------|----------------------------|----------------------------|
| 10 gels | 10 gels | 10 gels | 10 gels |
| 10 wells | 12 wells | 10 wells | 12 wells |
| 43251.01 | 43250.01 | 43252.01 | 43253.01 |

SERVAgeI™ IEF Gels

2D Gels

- For vertical IEF in mini slab gel format
- Suitable for both native and denaturing conditions
- Standard IEF by cathodic sample application
- NEPHGE by anodic sample application for very basic proteins



| SERVAgeI™ IEF 3-10 | SERVAgeI™ IEF 3-10 |
|-----------------------|-----------------------|
| 10 gels | 10 gels |
| 10 wells | 12 wells |
| 43242.01 | 43240.01 |

Vertical standard IEF using
SERVAgeI™ IEF 3-10

NEPHGE using
SERVAgeI™ IEF 3-10

Equipment for PRiME™



BlueVertical™ PRiME™

- Mini electrophoresis tank system
- Ideally suited for SERVAGe™ PRiME™ gels
- Runs all gels with an outer format of 10 x 10 x 0.7 cm
- Unique, leak free clamp system
- Smart design - made in Germany



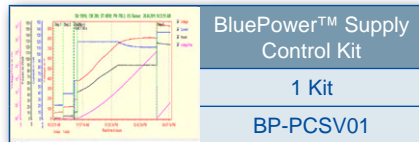
BluePower™ 500x4 Power Supply

- 500 V, 1000 mA, 200 W
- Programmable (9 programmes, 9 steps each)
- For mini gel electrophoresis and blotting
- 4 x 2 outlets



BluePower™ Supply Control Kit

- Monitoring of V, mA and W of each individual run
- Loading, storage and documentation of multistep settings
- Can be used with all SERVA BluePower™ supplies
- Compatible with all Windows® platforms (Windows® 98 and higher)



SERVA
Electrophoresis

SERVA Electrophoresis GmbH
Carl-Benz-Str. 7
Fon: +49 6221 13840-0
info@serva.de

D-69115 Heidelberg
Fax: +49 6221 13840-10
www.serva.de