

Practum[®]



turning science into solutions

Practum.[®]
Start Weighing Right.



Get best value for your money, without compromises in precision and reliability. Rely on consistent readings and excellent repeatability ensured by Sartorius quality and technology developed and designed in Germany.

Practum

Practum

What I Like ...

Practical and Sturdy Draft Shield

The sturdy draft shield will stand up to the daily use even by inexperienced operators. Moreover, it can be completely disassembled to conveniently clean the glass parts in a dishwasher.

Rugged Weigh Cell for Reliable Results – Every Time, All the Time

High-resolution, overload protected weigh cells, made in Germany, ensure durable and reliable performance of the Practum®.

Hassle-Free Below-Balance Weighing of Oversize Containers

Extra-large volumes or magnetic substances are easy to weigh accurately using the easily accessible weighing port.



Supervisor Lock

This practical feature enables teachers and professors to lock the menu.

As a result, students will concentrate on learning.

USB Port and Data Transfer to Microsoft® Excel for Perfect Records

The USB port automatically detects when a Sartorius laboratory printer is connected to the Practum®. This interface also enables you to transfer your weighing data directly into a Microsoft® Excel spreadsheet, without the need for additional software.

Changes Readily Documented by Interval-Controlled Printout of Weights

The Practum® will document weights automatically and reliably, such as slow filling processes.

Extra-large Feet and Up-front Level Indicator for Easy Leveling

Two large, easy-to-adjust feet and an outstandingly simple-to-read level indicator on the front make it a breeze for you to level the Practum®.

This helps ensure accurate, repeatable weighing results.



Plug & Play

Standard printer YDP40

Practum

Practum[®] Start Weighing Right.

You can't go wrong with the new Practum[®]:
a foolproof, exceptionally rugged and reliable lab balance.
Practum[®] has everything you need for standard applications.
So you pay only for what you really need.



Weighing

You name it, Practum[®] will weigh it – from the smallest samples to the heaviest objects in the analytical range, and from entire chunks of solids to the finest quantities of pastes, powders and liquids, Practum[®] provides incomparable weighing reliability.



Counting

Use Practum[®] to count identical materials, such as tablets, screws and similar parts. Using Practum[®] is easier, faster and more accurate than manual counting.



Density Determination

With Practum[®] and our Optional Density kit, you can easily and accurately determine the density of a solid object.



Peak Hold Function

Forget now you see it, now you don't. Effortlessly read off the maximum force released in milliseconds when a switch is activated, or weigh a bulky sample that covers the display. Practum[®] will conveniently determine and "hold" the peak value for you.



Checkweighing

Practum[®] is ideal when you need to check whether different objects, such as packaged units, are within a specific tolerance range.



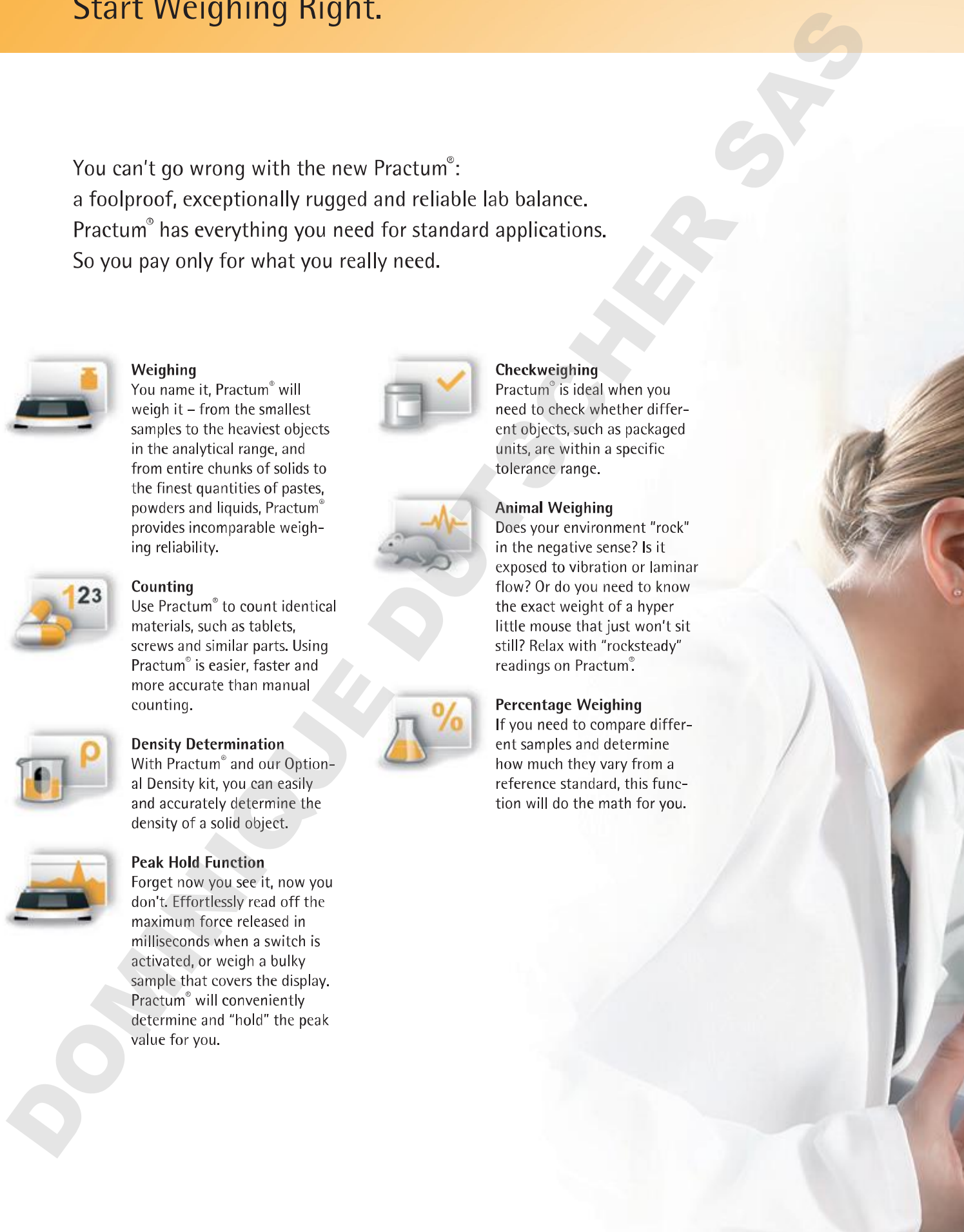
Animal Weighing

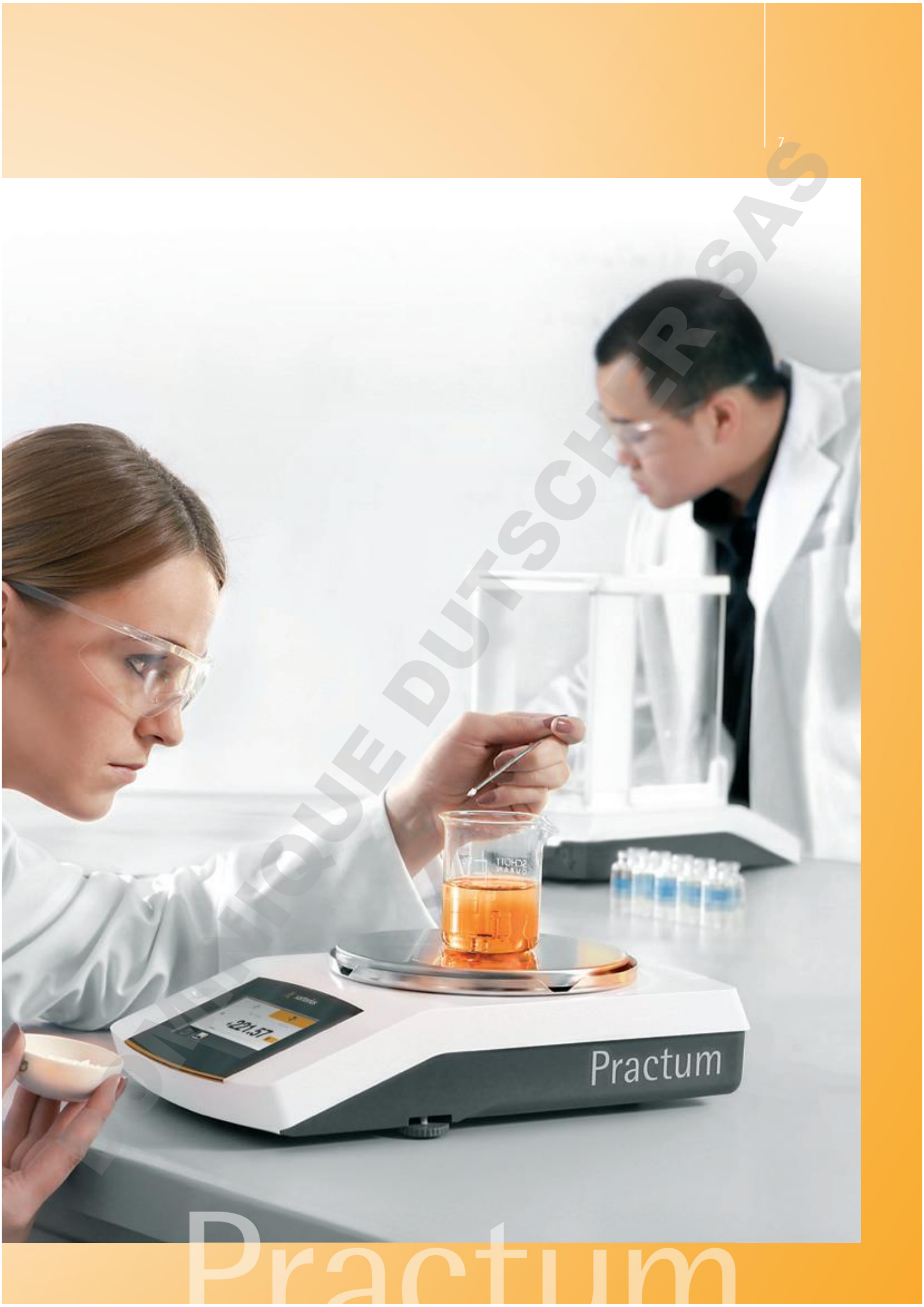
Does your environment "rock" in the negative sense? Is it exposed to vibration or laminar flow? Or do you need to know the exact weight of a hyper little mouse that just won't sit still? Relax with "rocksteady" readings on Practum[®].



Percentage Weighing

If you need to compare different samples and determine how much they vary from a reference standard, this function will do the math for you.





BIOPHARMACEUTIQUE DUTSCHER SAS

Practum

Practum



Technical Data Practum®

| Model | | 224 | 124 | 64 | 513 | 313 | 213 | 3102 | 2102 | 1102 | 612 | 412 | 6101 | 5101 | 2101 | 6100 | 5100 |
|-------------------------------|---|---------------|-----|-----|------|------|------|---------------|------|------|-----|-----|------|------|------|------|------|
| Weighing capacity | g | 220 | 120 | 60 | 510 | 310 | 210 | 3100 | 2100 | 1100 | 610 | 410 | 6100 | 5100 | 2100 | 6100 | 5100 |
| Readability | mg | 0.1 | 0.1 | 0.1 | 1 | 1 | 1 | 10 | 10 | 10 | 10 | 10 | 100 | 100 | 100 | 1000 | 1000 |
| Repeatability | mg | 0.1 | 0.1 | 0.1 | 1 | 1 | 1 | 10 | 10 | 10 | 10 | 10 | 100 | 100 | 100 | 500 | 500 |
| Linearity | mg | 0.2 | 0.2 | 0.2 | 2 | 2 | 2 | 30 | 30 | 30 | 30 | 30 | 300 | 300 | 300 | 1000 | 1000 |
| Typical stabilization time | s | 2 | 2 | 2 | 1 | 1 | 1 | 1.5 | 1.5 | 1.5 | 1.5 | 1.5 | 1.5 | 1.5 | 1.5 | 1 | 1 |
| Weighing pan size | Ø mm | 90 | 90 | 90 | 120 | 120 | 120 | 180 | 180 | 180 | 180 | 180 | 180 | 180 | 180 | 180 | 180 |
| Weighing chamber height | mm | 209 | 209 | 209 | 209 | 209 | 209 | | | | | | | | | | |
| Net weight, approx. | kg | 4.5 | 4.5 | 4.5 | 4.9 | 4.9 | 4.9 | 3.1 | 3.1 | 3.1 | 3.1 | 3.1 | 3.1 | 3.1 | 3.1 | 3.1 | 3.1 |
| | lb | 9.9 | 9.9 | 9.9 | 10.8 | 10.8 | 10.8 | 6.8 | 6.8 | 6.8 | 6.8 | 6.8 | 6.8 | 6.8 | 6.8 | 6.8 | 6.8 |
| Dimensions D×W×H | mm | 360×216×320 | | | | | | 360×216×95 | | | | | | | | | |
| | inch | 14.1×8.5×12.6 | | | | | | 14.1×8.5×3.75 | | | | | | | | | |
| Data interface | mini USB – Automatic recognition of Sartorius printer models YDP40 and YDP20-OCE – Direct data transfer to Microsoft® application programs without any additional software – Programmable interval for data output – Choice of SBI, table format or text format data transfer protocols | | | | | | | | | | | | | | | | |
| Supervisor lock | Menu lock to prevent unintended manipulation | | | | | | | | | | | | | | | | |
| Housing and draft shield | Robust and easy to clean housing with easy to operate draft shield (where applicable) | | | | | | | | | | | | | | | | |
| Standard application programs | Weighing, Density, Percentage, Checkweighing, Peakhold, Counting and Animal weighing | | | | | | | | | | | | | | | | |
| Theft lock | Kensington lock and lockdown capability for cable or chain | | | | | | | | | | | | | | | | |
| In-use cover | Standard for all models | | | | | | | | | | | | | | | | |
| Underfloor weighing | Integrated | | | | | | | | | | | | | | | | |
| Accessories | See Practum® accessory list | | | | | | | | | | | | | | | | |
| Technology and construction | Made in Germany | | | | | | | | | | | | | | | | |

Germany

Sartorius Lab Instruments GmbH & Co. KG
 Weender Landstrasse 94–108
 37075 Goettingen

Phone +49.551.308.0

Fax +49.551.308.3289



◀ www.sartorius.com