

Dispensing Peristaltic Pump

LabF1, LabF3, LabF6



- | LabF1, LabF3, LabF6
- | Medicine and chemical dispensing, such as oral liquid, diagnostic reagents.
- | Cosmetic dispensing, such as perfume, lip gloss.



- ① Filling Countersunk
- ② Filling Nozzle
- ③ Foot Pedal Switch

Suitable Pump Head



Features

- | Imported 4.3" industrial grade color LCD screen display, with touch screen control.
- | Can preset dispensing volume, dispensing time, pause time and copy numbers.
- | With intelligent calibration function and online micro adjusting function.
- | The pump can store 60 commonly used filling modes.
- | Back suction angle setting, avoid liquid drop off when the pump stops working.
- | New flow rate mode, can be used for continuous transferring.
- | Can communicate with balance, closed-loop control.

Dispensing Peristaltic Pump

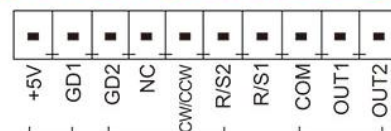
F1, F3, F6



Model Number

- | F1, F3, F6

External Control Schematic Diagram

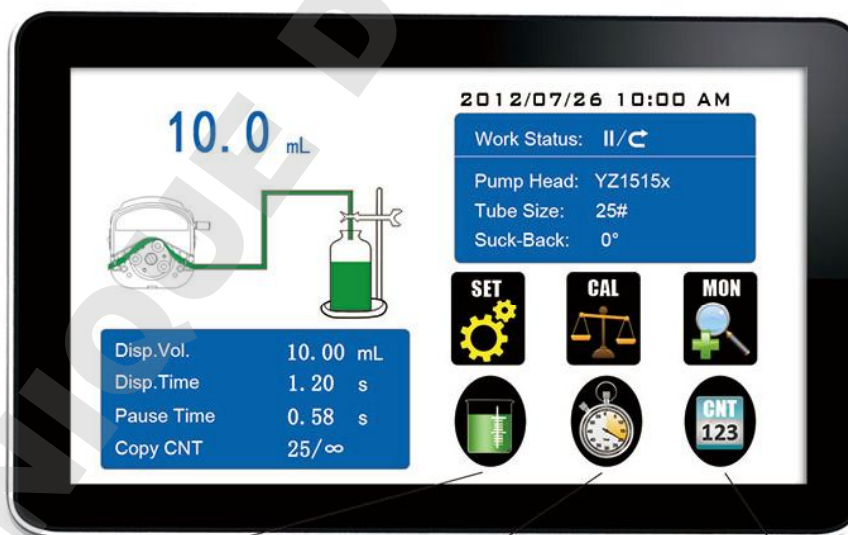


Technical Specifications

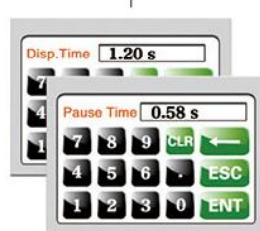
Flow rate range	LabF1/F1: 0.00166~570mL/min LabF3/F3: 0.00166~1330mL/min LabF6/F6: 0.00166~2280mL/min	Keypad lifetime	300,000 times
Speed range	1-600 rpm	Start/stop, direction signal	Passive switch signal, such as foot pedal switch Active switch signal: 5V, 12V and 24V for option
Speed resolution	0.01 rpm	Output interface	Output motor working status (Open-Collector output)
Dispensing volume range	0.1-9999.99 mL	Power supply	AC 220V±10% 50Hz/60Hz (Standard) AC 110V±10% 50Hz/60Hz (Optional)
Dispensing volume resolution	0.01 mL	Outlet pressure	0.1Mpa(0.86~1.0mm wall thickness tubing) 0.1~0.27Mpa(1.6~2.4mm wall thickness tubing)
Dispensing time	0.5-9999.99 s	Drive dimension (L×W×H)	LabF Series: 261.4×157.3×236.9 mm F Series: 219.6×152×211.6mm
Pause time	0.5-9999.99 s	Drive weight	LabF Series: 4.40 kg F Series: 4.20 kg
Time resolution	0.01 s	Power consumption	< 50W
Copy numbers	1-9999 numbers, setting '0' means unlimited	Condition temperature	0-40°C
Back suction angle	0-360°	Relative humidity	< 80%
Dispensing accuracy	<±0.5%	IP rate	IP31
Motor type	Stepper motor		
Display	Industrial grade 4.3" color LCD display		
Control method	Touch screen and Mechanical keypad		

Product Composition and Flow Rate Range

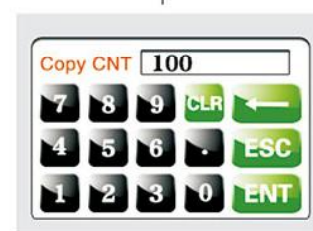
Dispensing Peristaltic Pump	Pump Head & Flow Rates (mL/min)			
	YZ1515x	YZ2515x	MC1~MC12(10)	MC1~MC12(6)
Drive & speed	13', 14', 19', 16' 25', 17', 18'	15', 24'	Inner diameter: 0.13-3.17mm Wall thickness: 0.86-1mm	
LabF1/F1	1-150rpm	0.07~570	1.7~435	0.00166-49(suggestion working speed≤150rpm)
LabF3/F3	1-350rpm	0.07~1330	1.7~1015	0.00185-65(suggestion working speed≤150rpm)
LabF6/F6	1-600rpm	0.07~2280	1.7~1740	



Dispensing volume interface



Dispensing time and pause time interface



Copy numbers interface